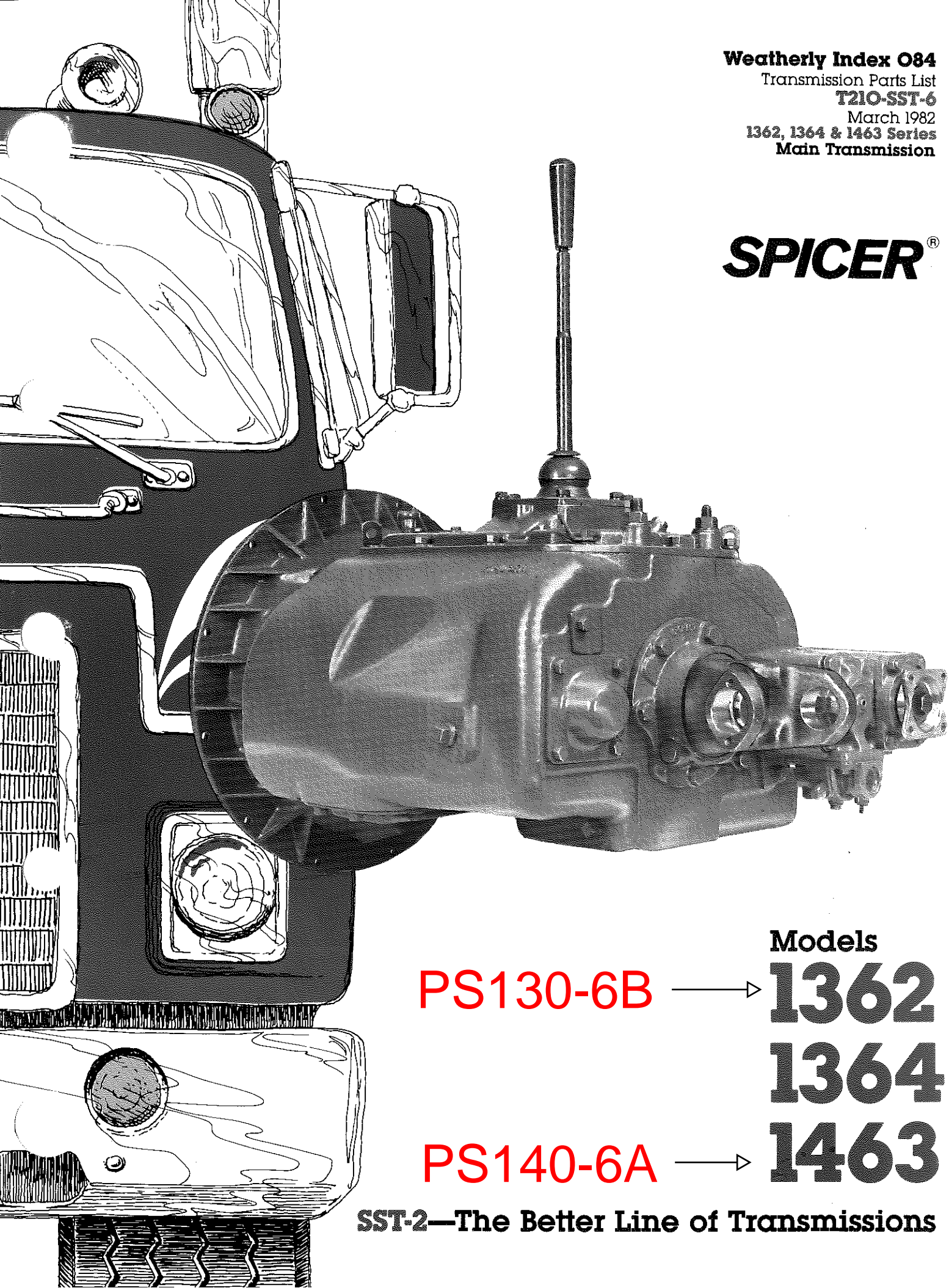


Weatherly Index 084
Transmission Parts List
T210-SST-6
March 1982
1362, 1364 & 1463 Series
Main Transmission

SPICER®



Models

PS130-6B → **1362**
1364

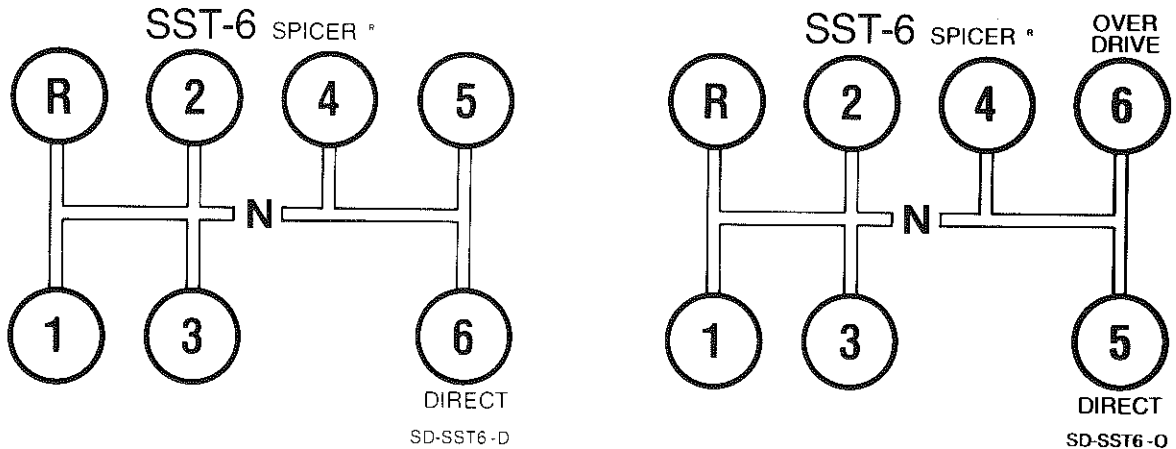
PS140-6A → **1463**

SST-2—The Better Line of Transmissions

RATIO TABLE

SPEEDS	MODELS				
	1362-A	1362-B	1362-C	1364-C	1463-A
1st	8.53	8.53	8.86	8.86	7.47
2nd	5.52	4.87	5.06	5.06	4.08
3rd	3.57	3.00	3.12	3.12	2.26
4th	2.27	1.90	1.97	1.97	1.24
5th	1.51	1.33	1.39	1.39	1.00
6th	1.00	1.00	1.00	1.00	.84
Rev.	8.53	8.53	8.86	8.86	7.47

SHIFT PATTERN



IDENTIFICATION

The Name Plate (NP-96) affixed to the REAR of the Transmission is stamped with information:

In requesting more information on these transmissions, please furnish this information.

SERIAL

B/M No. MODEL

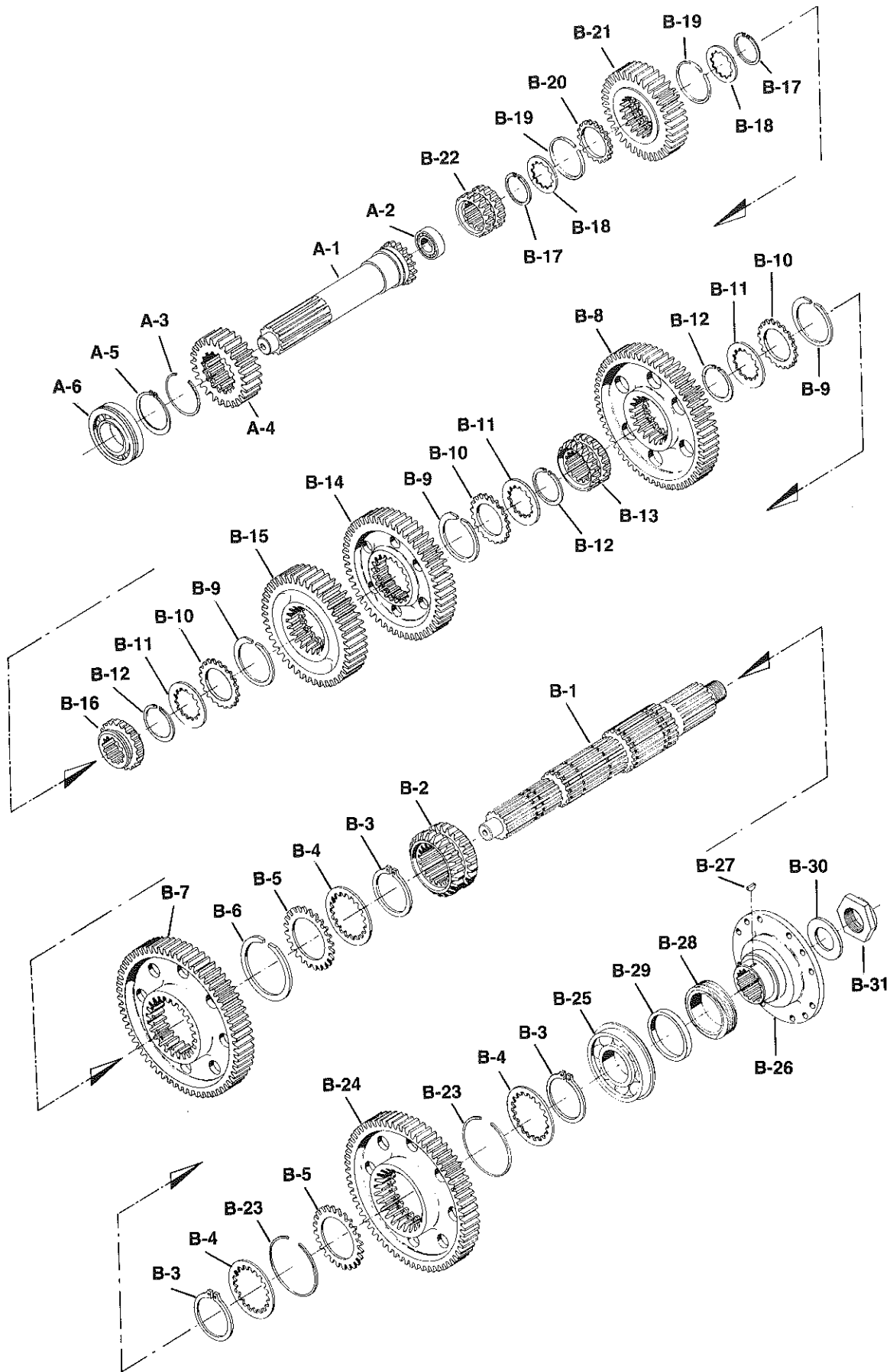
Abbreviations used in this parts list include:

- N.S.—Not Shown
- N.S.S.—Not Sold Separately
- N.R.—Not Required

MODELS 1362, 1364 and 1463 GEARS and RELATED PARTS

SPICER®

T210-SST-6



Ref. No.	Part No.	Part Description	Qty.
DRIVE GEAR GROUP			
A-1	97-35-54	Drive Gear Input Shaft – 2"-10 spline	1
	97-35-53	Drive Gear Input Shaft – 1¾"-10 spline	1
A-2	550946	Pocket Bearing	1
A-3	97-381-2	Snap Ring	1
A-4		Drive Gear	1
	97-35-48	(28T) – for 1463-A	
	97-35-50	(26T) – for 1362-C, 1364-C	
	97-35-51	(26T) – for 1362-A, 1362-B	
A-5	70-381-6	Snap Ring (retainer)	1
A-6	550944	Bearing	1
MAINSHAFT GROUP			
B-1	97-362-40	Mainshaft	1
B-2	97-465-24	Clutch Collar – 1st and reverse	1
B-3	98-381-1	Snap Ring	3
B-4	330869	Thrust Washer – internal (18T)	3
B-5	330810	Thrust Washer – external (24T)	2
B-6	98-381-2	Snap Ring	1
B-7	97-8-113	1st Gear (64T)	1
B-8		2nd Gear	1
	97-8-122	(58T) – for 1362-A	
	97-8-123	(56T) – for 1362-B, 1362-C, 1364-C, 1463-A	
B-9	97-381-1	Snap Ring	3
B-10	330814	Thrust Washer – external (20T)	3
B-11	330730	Thrust Washer – internal (15T)	3
B-12	97-381-4	Snap Ring	3
B-13	97-465-21	Clutch Collar – 2nd and 3rd	1
B-14		3rd Gear	1
	97-8-6	(50T) – for 1362-A	
	97-8-14	(44T) – for 1463-A	
	97-8-22	(56T) – for 1362-B, 1362-C, 1364-C	
B-15		4th Gear	1
	97-8-8	(42T) – for 1362-A	
	97-8-16	(32T) – for 1463-A	
	97-8-24	(38T) – for 1362-B, 1362-C, 1364-C	
B-16	97-465-23	Clutch Collar – 4th gear	1
B-17	97-381-35	Snap Ring	2
B-18	330735	Thrust Washer – internal (13T)	2
B-19	97-381-2	Snap Ring	2
B-20	330732	Thrust Washer – external (17T)	1
B-21		5th Gear (Direct Drive on 6th)	1
	97-8-10	(34T) – for 1362-A	
	97-8-26	(32T) – for 1362-B, 1362-C, 1364-C	
B-21	97-8-18	6th Overdrive Gear (Direct Drive on 5th)	1
		(26T) – for 1463-A	
B-22	97-465-4	Clutch Collar (5th Gear Overdrive) and Drive Gear	1
B-23	97-381-32	Snap Ring	2
B-24	97-8-182	Reverse Gear (21T)	1
B-25	550925	Bearing – rear	1
B-26	See Tab Bills	Flange or End Yokes	1
B-27	500007-9	Woodruff Key #.3	1
B-28	or See Tab Bills	Drive Gear – Speedometer	1
	97-37-7	Spacer – (used in place of speedometer drive gear)	1
B-29	97-37-17	Speedometer Spacer	1
B-30	330734	Flat Washer	1
B-31	545065	Nut – 1¾"-16 self locking	1

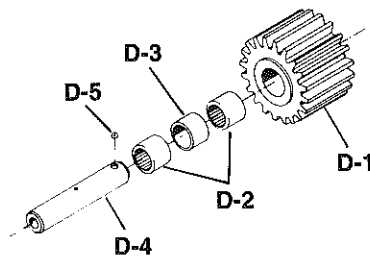
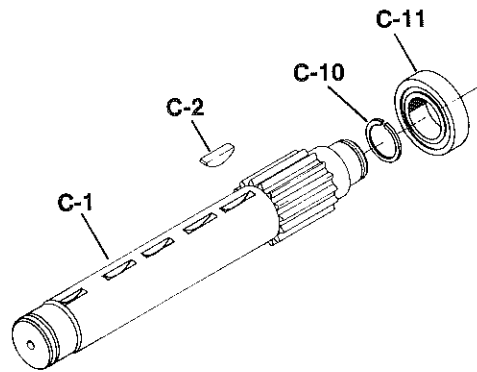
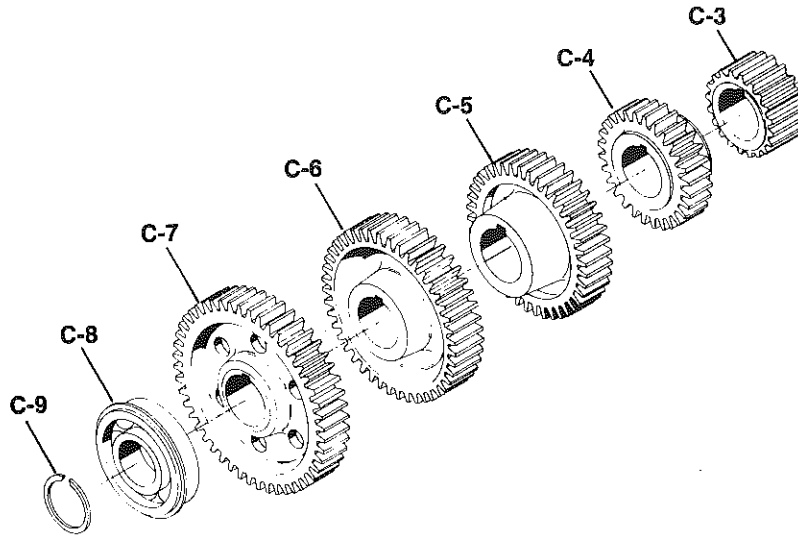
N.S.S. – Not Sold Separately

MODELS 1362, 1364 and 1463

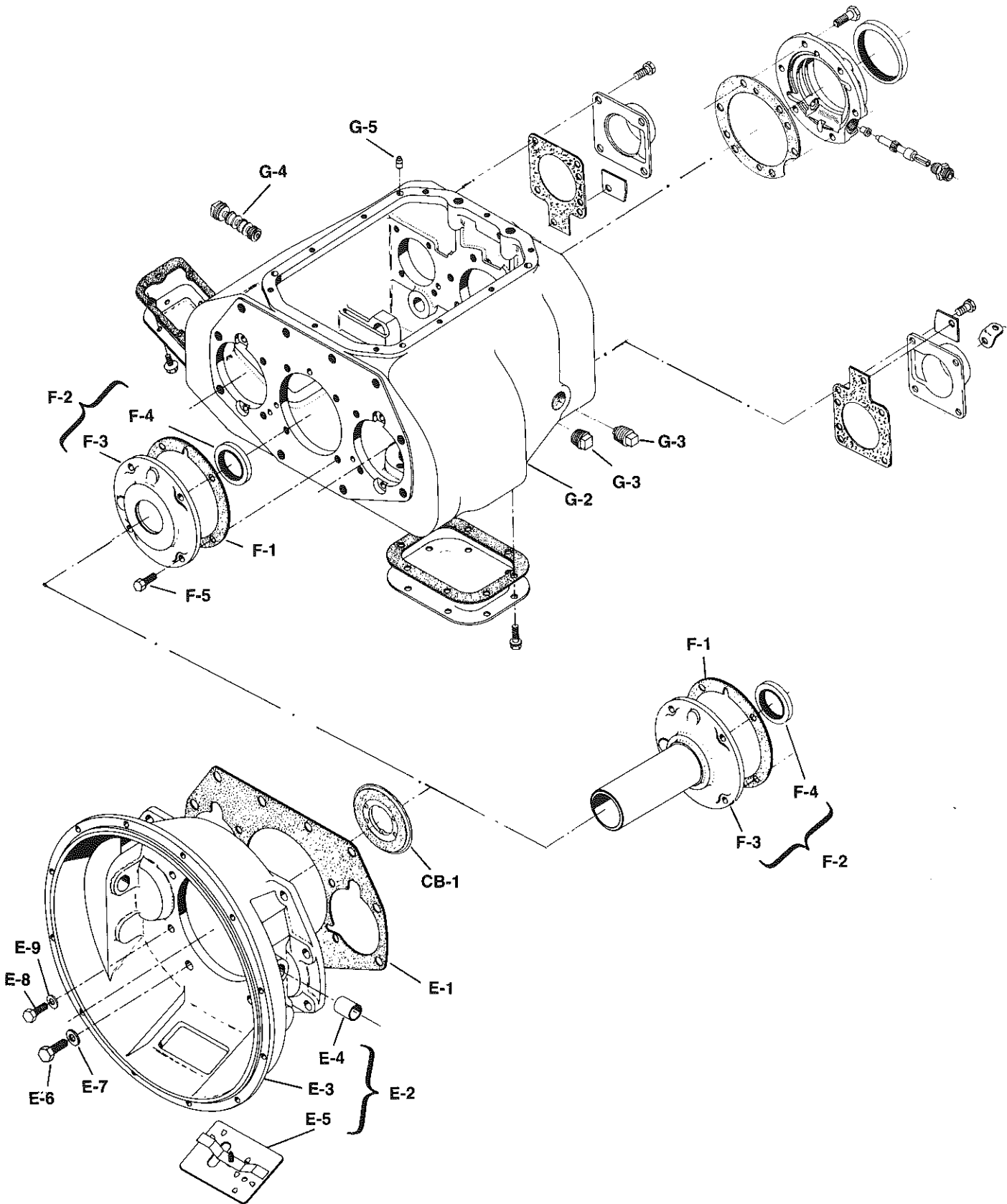
GEARS and RELATED PARTS

SPICER®

T210-SST-6



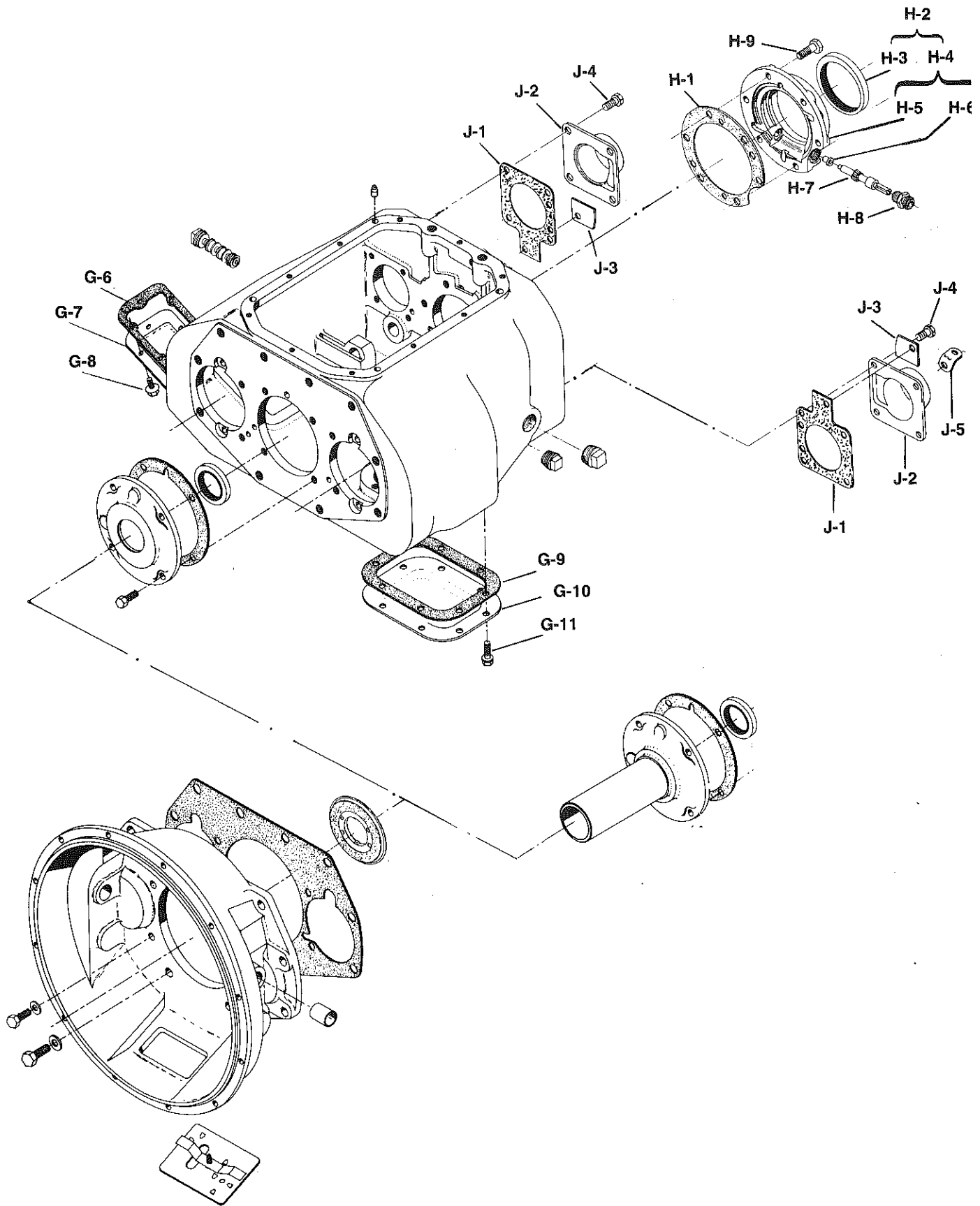
Ref. No.	Part No.	Part Description	Qty.
COUNTERSHAFT GROUP			
C-1	97-30-29 97-30-45	Countershaft (15T) Right Side – splined for P.T.O. (15T) Left Side – slotted for pump	2
C-2	500010-8	Woodruff Key #29	10
C-3	97-196-1 97-196-17 97-196-45	2nd Gear (21T) – for 1362-A (23T) – for 1362-B, 1362-C, 1364-C (24T) – for 1463-A	2
C-4	97-196-3 97-196-11 97-196-19	3rd Gear (28T) – for 1362-A (34T) – for 1463-A (32T) – for 1362-B, 1362-C, 1364-C	2
C-5	97-196-83 97-196-84 97-196-85	4th Gear (37T) – for 1362-A (45T) – for 1463-A (40T) – for 1362-B, 1362-C, 1364-C	2
C-6	97-196-75 97-196-79	5th Gear (45T) – for 1362-A (48T) – for 1362-B, 1362-C, 1364-C	2
C-6	97-196-77	6th Overdrive Gear (54T) for 1463-A	2
C-7	97-1-1 97-1-3 97-1-26	Drive Gear – Direct Drive (52T) – for 1362-A, 1362-B (49T) – for 1463-A (54T) – for 1362-C, 1364-C	2
C-8	550031	Bearing – front	2
C-9	97-381-30	Snap Ring – retainer	2
C-10	97-381-34	Backing Ring	2
C-11	550950	Bearing – rear	2
REVERSE IDLER GEAR GROUP			
D-1	97-5-1	Gear	2
D-2	550886	Bearing	4
D-3	97-37-1	Spacer	2
D-4	97-60-1	Shaft	2
D-5	500566-8	Lockball – 3/32" diameter	2



Ref. No.	Part No.	Part Description	Qty.
CLUTCH HOUSING GROUP			
E-1	97-352-1	Gasket	1
E-2	See Tab Bills	Clutch Housing Assembly	1
E-3	N.S.S.	Clutch Housing	1
E-4	128C-20	Bushing (Except 97-518-16-3X)	4
	97-24-6	Bushing (97-518-16-3X only)	2
N.S.	97-463-30	Oil Seal (97-518-16-3X only)	4
E-5	97-96-18-1X	Hand Hole Cover Assembly	1
E-7	330829	Flat Washer – 5/8" — for use with aluminum clutch housing	10
E-9	170-W	Flat Washer – 1/2" — for use with aluminum clutch housing	4
CB-1	See Tab Bills	Clutch Brake Assembly	1
Used with 97-518-14-1X (Iron)			
E-6	and 545008-3	Bolt – 5/8"-11 x 1 3/4" hex head self locking	9
	545008-2	Bolt – 5/8"-11 x 1" hex head self locking	1
E-7	330720	Washer – external tooth 5/8"	10
E-8	545001	Bolt – 1/2"-13 x 1 1/4" hex head, self locking	4
E-9	330290	Washer – 1/2" external tooth	4
Used with 97-518-15-1X (Iron) and 312795X (Iron)			
E-6	545008-3	Bolt – 5/8"-11 x 1 3/4" hex head self locking	10
E-7	330829	Flat Washer – 5/8"	10
E-8	545001	Bolt – 1/2"-13 x 1 1/4" hex head self locking	4
E-9	170-W	Flat Washer – 1/2"	4
Used with 97-518-16-1X (Alum), 97-518-16-3X (Alum) and 97-518-18-1X (Alum)			
E-6	545008-3	Bolt – 5/8"-11 x 1 3/4" hex head self locking	10
E-8	545001	Bolt – 1/2"-13 x 1 1/4" hex head self locking	4
Used with 97-518-25-1X (Iron), 97-518-28-1X (Alum) and 312961X (Iron)			
E-6	and 545008-3	Bolt – 5/8"-11 x 1 3/4" hex head self locking	8
	545031	Bolt – 5/8"-11 x 1 3/4" socket head self locking	2
E-7	330829	Flat Washer – 5/8"	10
E-8	545001	Bolt – 1/2"-13 x 1 1/4" hex head self locking	4
E-9	170-W	Flat Washer – 1/2"	4
DRIVE GEAR BEARING CAP GROUP			
F-1	97-223-1	Gasket	1
F-2	See Tab Bills	Bearing Cap and Oil Seal Assembly	1
F-3	N.S.S.	Bearing Cap	1
F-4	97-463-32	Oil Seal	1
F-5	545002-4	Bolt – 3/8"-16 x 1 1/8" hex head self locking	4
CASE GROUP			
G-1	See Tab Bills	Case Assembly	1
G-2	N.S.S.	Case	1
N.S.	or NP-96	Nameplace – for 97-15-42-1X, 97-15-43-1X	1
	NP-2	Nameplate – for 97-15-42-2X	1
N.S.	252-SP	Nameplate Pins	4
G-3	62-39-3	Drain and Filler Plug – magnetic	2
G-4	97-39-1	Drain Plug – magnetic	2
G-5	274-SP	Dowel Pins	2

Case Group continued on pages 8 & 9

**N.S. – Not Shown
N.S.S. – Not Sold Separately**



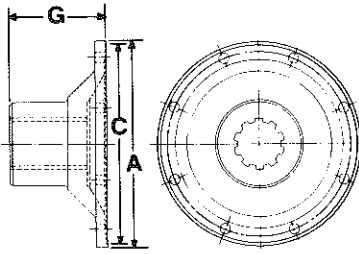
Ref. No.	Part No.	Part Description	Qty.
CASE GROUP (continued)			
G-6	46-324-1	6 Bolt P.T.O. Gasket	1
G-7	50-267-2	6 Bolt P.T.O. Cover	1
G-8	330800	Bolt – 3/8"-16 x 3/4" flanged head self locking	6
G-9	22P-22	8 Bolt P.T.O. Gasket	1
G-10	73-267-1	8 Bolt P.T.O. Cover	1
G-11	545012	Bolt – 7/16"-14 x 3/4" flanged head self locking	8
MAINSHAFT REAR BEARING CAP – For Gear Driven Speedometer			
H-1	97-223-2	Gasket	1
H-2	97-19-32-2X	Bearing Cap, Seal and Bushing Assembly	1
H-3	97-463-33	Oil Seal	1
H-4	97-19-32-1X	Bearing Cap and Bushing Assembly	1
H-5	97-19-32	Bearing Cap	1
H-6	60-475-1	Bushing – speedometer	1
H-7	or See Tab Bills	Gear – speedometer driven	1
	55-334-1	Plug – (Used without speedometer driven gear)	1
H-8	55-454-1	Sleeve – speedometer gear	1
N.S.	44-539-1	Dust Cap	1
H-9	or 545001-4	Bolt – 1/2"-13 x 1 1/2" hex head self locking	4
	and 545048	Bolt – 1/2"-13 x 1 7/16" – head has hole for lock wire self locking (Turner Only)	4
	545001-8	Bolt – 1/2"-13 x 2 1/2" hex head self locking	2
MAINSHAFT REAR BEARING CAP – For Electronic Speedometer			
H-2	97-19-46-1X	Bearing Cap and Seal Assembly	1
H-3	97-463-33	Oil Seal	1
H-5	97-19-46	Bearing Cap	1
H-6	60-475-1	Speedometer Bushing	1
H-8	55-334-1	Plug – outlet	1
H-9	and 545001-4	Bolt – 1/2"-13 x 1 1/2" hex head self locking	4
	545001-8	Bolt – 1/2"-13 x 2 1/2" hex head self locking	2
COUNTERSHAFT REAR BEARING CAP GROUP			
J-1	97-223-22	Gasket	2
J-2	97-22-23	Bearing Cap – for use with P.T.O. countershaft	2
J-3	97-96-23	Reverse Idler Shaft Cover	2
J-4	545015	Bolt – 3/8"-16 x 1 5/16" flanged head self locking	10
J-4	and 545002-4	Bolt – 3/8"-16 x 1 1/8" for lift hook (Turner Mfg. only)	2
	545015	Bolt – 3/8"-16 x 1 5/16" flanged head self locking	6
J-5	330564-2	Lift Hook	2
N.S. – Not Shown			

MODELS 1362, 1364 and 1463

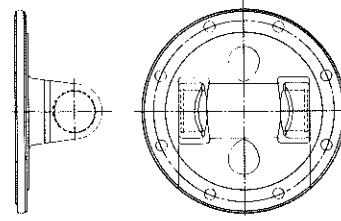
COMPANION FLANGES, FLANGE YOKES and END YOKES

SPICER®

T210-SST-6



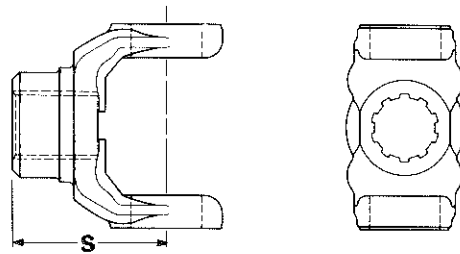
COMPANION FLANGE



FLANGE YOKE

Companion Flanges and Flange Yokes

Joint Series	A Flange Diameter	Companion Flange Assembly	Companion Flange	G End of Hub to Flange Face Length	C Pilot Diameter F-Female M-Male	Mates with	
						Flange Yoke	Series
1710	8"	—	6-1-4881	3"	F-7 ³ / ₄ "	6-2-749	1710
1810	8"	—	6.5-1-2151	2 ³ / ₄ "	F-7 ³ / ₄ "	6.5-2-329	1810
1810	8"	—	6.5-1-1991	3"	F-7 ³ / ₄ "	6.5-2-329	1810

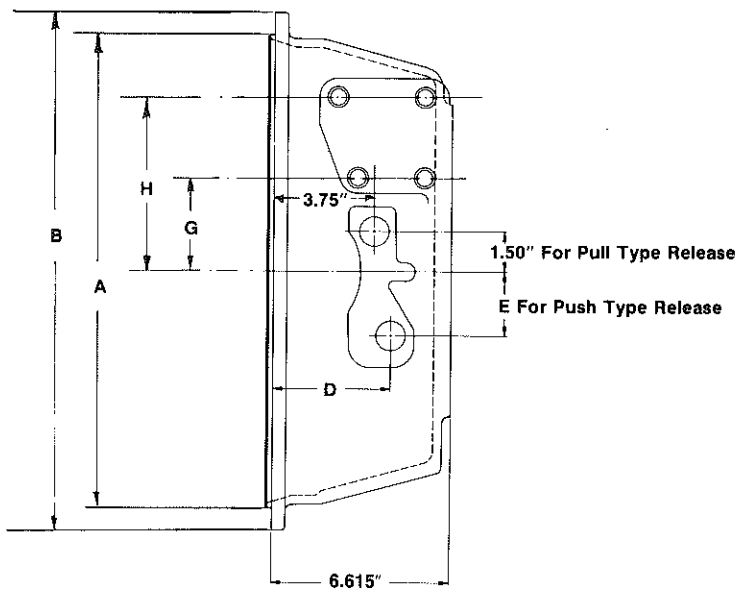


END YOKE

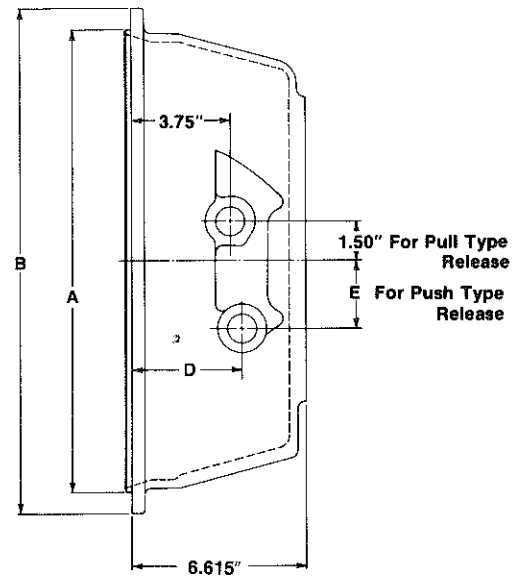
End Yokes

Joint Series	End Yoke Sub-Assembly	S End of Hub to Center Line Length	Joint Angle
1710	6-4-5351	5 ³ / ₁₆ "	21°
1810	6.5-4-3021	5 ⁹ / ₁₆ "	30°

SAE		
Size No.	A Pilot Dia.	B O.D.
1	20 $\frac{1}{8}$ "	21 $\frac{3}{4}$ "
2	17 $\frac{5}{8}$ "	19 $\frac{1}{4}$ "
3	16 $\frac{1}{8}$ "	17 $\frac{3}{4}$ "



NODAL MOUNT

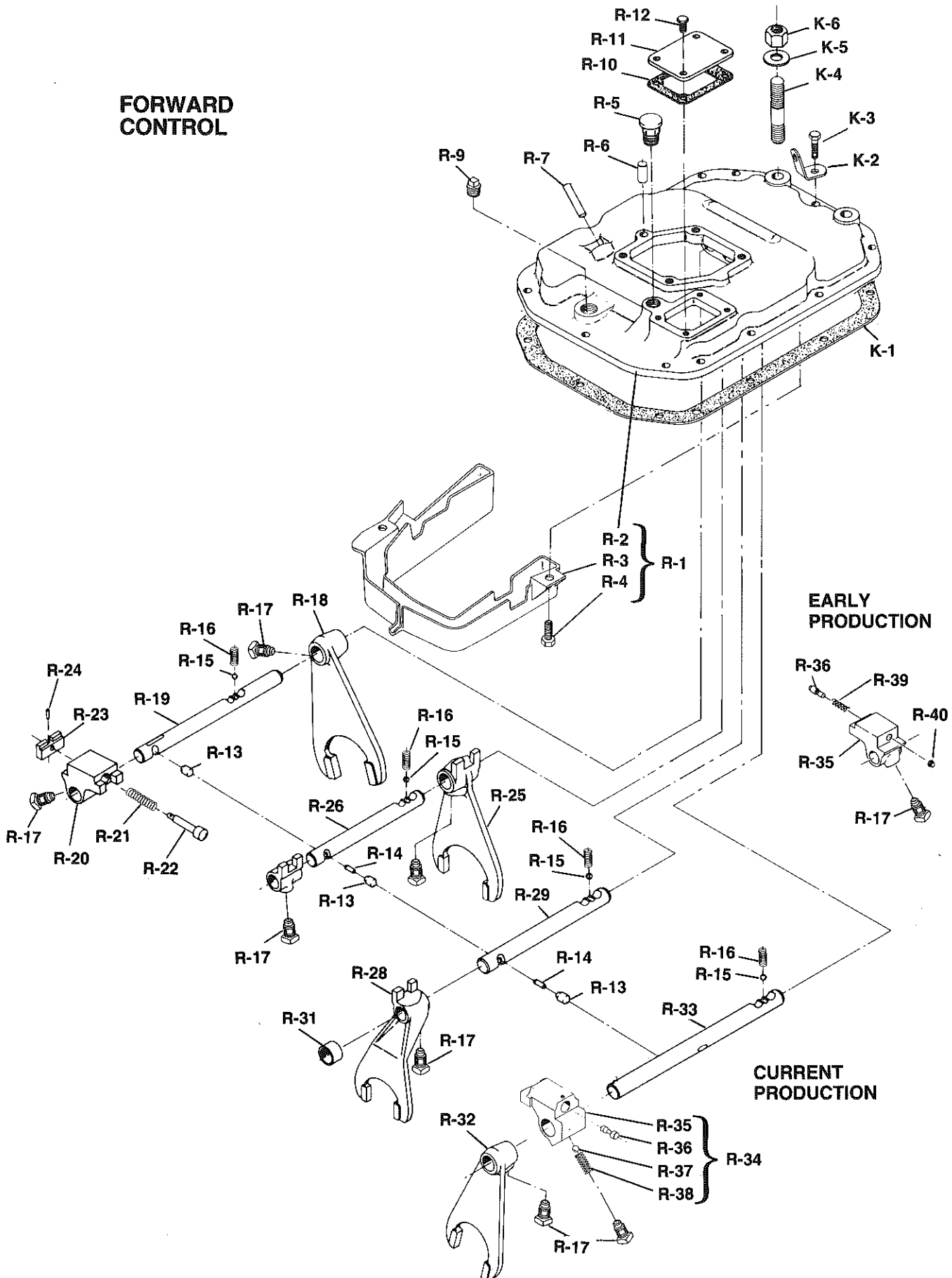


STANDARD MOUNT

Part No.	Casting No.	Material	SAE#	D Lower Hole Dim. Face To Center Hole	E Below Center	G	H	For Service Use
97-518-3	C97-518-4	Iron	2	4.187"	2.625"	—	—	312795X
97-518-12	C97-518-13-1	Iron	1	3.750"	1.500"	4.00"	8.50"	312961X
97-518-14	C97-518-7	Iron	2	4.375"	2.375"	3.50"	6.50"	97-518-14-1X
97-518-15	C97-518-2	Iron	1	4.187"	2.625"	—	—	97-518-15-1X
97-518-16	C97-518-17-1	Alum.	1	4.187"	2.625"	—	—	97-518-16-1X
97-518-16	C97-518-17-1	Alum.	1	4.187"	2.625"	—	—	97-518-16-3X
97-518-18	C97-518-17	Alum.	2	4.187"	2.625"	—	—	97-518-18-1X
97-518-25	C97-518-13-1	Iron	1	3.750"	1.500"	4.00"	8.50"	97-518-25-1X
97-518-28	C97-518-29	Alum.	1	3.750"	1.500"	4.00"	8.50"	97-518-28-1X
97-518-31	C97-518-29	Alum.	1	3.750"	1.500"	4.00"	8.50"	97-518-31-1X

MODELS 1362, 1364 and 1463 SHIFTER HOUSING ASSEMBLY

**FORWARD
CONTROL**



Ref. No.	Part No.	Part Description	Assembly No.	97-16-25-76X	97-16-62-29X	97-16-62-33X	97-16-62-39X	97-16-62-40X
				F	C	C	C	C
		SHIFTER HOUSING ASSEMBLY		1	1	1	1	1
R-1	See Tab Bills 97-16-25-66X	Shifter Housing and Oil Trough Assembly		1	—	—	—	—
R-1	97-16-62-1X	Shifter Housing and Oil Trough Assembly		—	1	1	1	1
R-2	N.S.S.	Shifter Housing		1	1	1	1	1
R-3	330918	Oil Trough		1	1	1	1	1
R-4	330800	Bolt — 3/8"-16 x 3/4" flanged head self locking		2	2	2	2	2
R-5	312268	Breather		—	1	1	1	1
R-5	5951X	Breather		1	—	—	—	—
R-6	545000	Blocker Pin		—	1	1	1	1
R-6	545010	Blocker Pin		1	—	—	—	—
R-7	330739-1	Pin — backup lite		1	1	1	1	1
R-8	545021	Plug — neutral safety switch		—	1	1	1	1
R-9	500114	Plug — oil return hole		1	1	1	1	1
N.S.	330366	Plug — backup lite switch hole		—	—	—	—	1
R-10	97-223-4	Gasket — aperture cover		1	1	1	1	1
R-11	97-96-2	Aperture Cover		1	1	1	1	1
R-12	545005-1	Bolt — 5/16"-18 x 5/8" hex head self locking		4	4	4	4	4
		For All Shift Forks, Brackets and Rod Groups						
R-13	97-12-1	Interlock		3	3	3	3	3
R-14	194-SP	Pin — shift rod		2	2	2	2	2
R-15	50-80-5	Poppet Ball		4	4	4	4	4
R-16	97-72-11	Spring — poppet ball		4	4	4	4	4
R-17	545011	Bolt — 7/16"-20 x 1 3/16" set type self locking, square head		7	7	7	7	7
		First and Reverse Shift Fork, Bracket and Rod Group						
R-18	97-66-53	Shift Fork		1	1	1	1	1
R-19	97-67-189	Shift Rod		—	1	1	—	1
R-19	97-67-190	Shift Rod		1	—	—	—	—
R-19	97-67-196	Shift Rod		—	—	—	1	—
R-20	97-354-11	Shift Rod Bracket		1	1	1	1	1
R-21	97-72-2	Spring — plunger		1	1	—	—	1
R-21	97-72-12	Spring — plunger		—	—	—	1	—
R-21	97-72-17	Spring — plunger		—	—	1	—	—
R-22	97-438-1	Plunger		1	1	1	1	1
R-23	330736	Blocker — shift bracket		1	1	1	1	1
R-24	500593-6	Pin — plunger		1	1	1	1	1
		Second and Third Shift Fork, Bracket and Rod Group						
R-25	97-66-23	Shift Fork		1	1	1	1	1
R-26	97-67-83	Shift Rod		—	1	1	1	1
R-26	97-67-125	Shift Rod		1	—	—	—	—
R-27	97-354-3	Shift Rod Bracket		1	—	—	—	—

Shifter Housing Assembly Continued on Pages 14 and 15.

*F — Forward Control
*C — Center Control

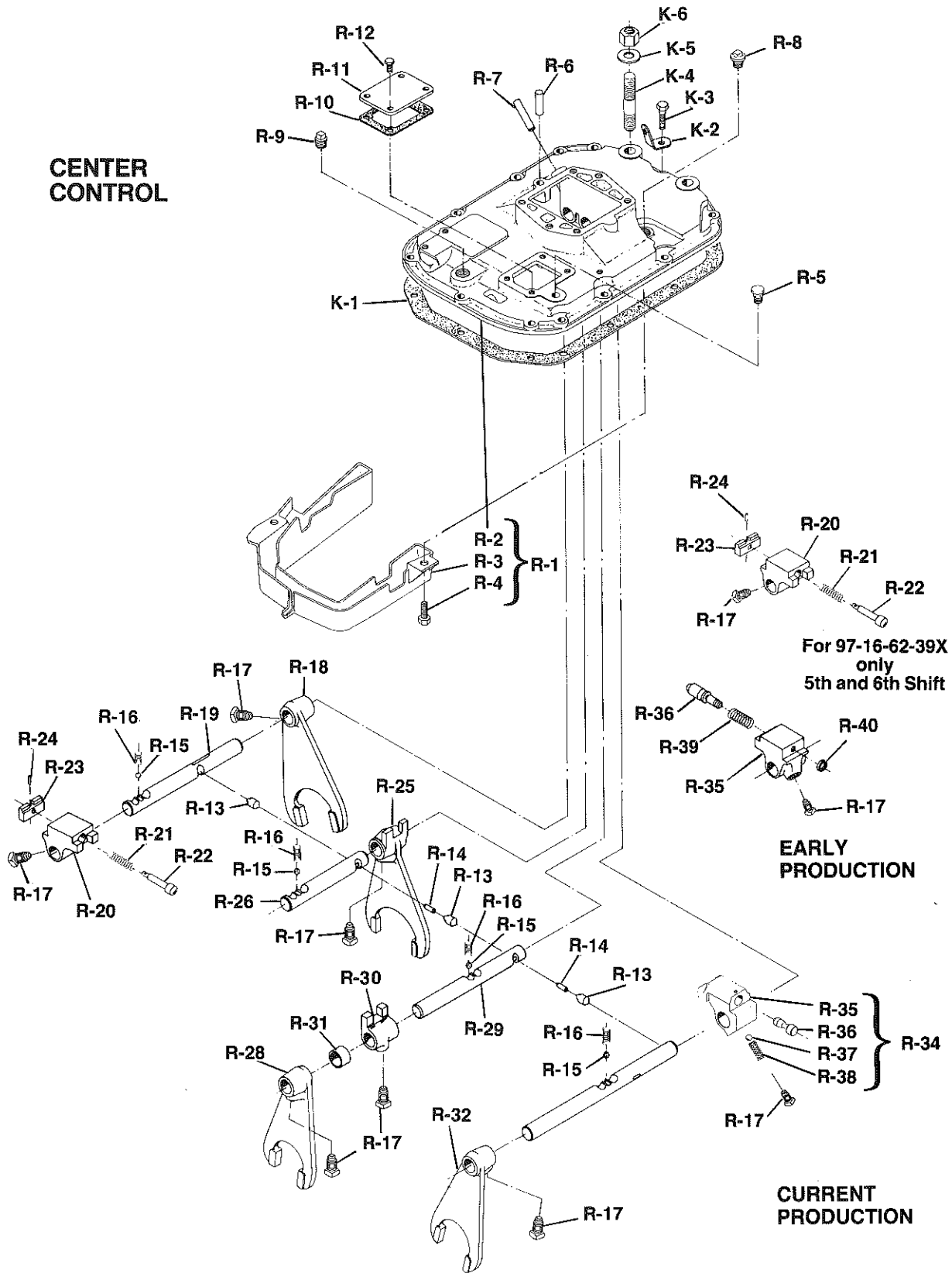
N.S. — Not Shown
N.S.S. — Not Sold Separately

MODELS 1362, 1364 and 1463 SHIFTER HOUSING ASSEMBLY

SPICER®

T210-SST-6

CENTER
CONTROL



Ref. No.	Part No.	Part Description	Assembly No.	97-16-25-76X	97-16-62-29X	97-16-62-33X	97-16-62-39X	97-16-62-40X
				Pad Position*				
				F	C	C	C	C
SHIFTER HOUSING ASSEMBLY (continued)								
Fourth Shift Fork, Bracket and Rod Group								
R-28	97-66-5	Shift Fork		—	1	1	1	1
R-28	97-66-32	Shift Fork		1	—	—	—	—
R-29	97-67-84	Shift Rod		—	1	1	1	1
R-29	97-67-126	Shift Rod		1	—	—	—	—
R-30	97-354-3	Shift Rod Bracket		—	1	1	1	1
R-31	60-203-7	Stop Sleeve		—	1	1	1	1
Fifth and Sixth Shift Fork, Bracket and Rod Group								
R-32	97-66-5	Shift Fork		1	1	1	1	1
R-33	97-67-85	Shift Rod		—	1	1	1	1
R-33	97-67-127	Shift Rod		1	—	—	—	—
Current Production								
R-34	97-354-21-2X	Shift Rod Bracket Assembly		1	1	1	—	1
R-35	97-354-21	Shift Rod Bracket		1	1	1	—	1
R-36	97-438-17	Plunger		1	1	1	—	1
R-37	50-80-1	Poppet Ball		1	1	1	—	1
R-38	97-72-23	Spring – poppet ball		1	1	1	—	1
R-20	97-354-11	Shift Rod Bracket		—	—	—	1	—
R-21	97-72-17	Spring – plunger		—	—	—	1	—
R-22	97-438-1	Plunger		—	—	—	1	—
R-23	330736	Blocker – shift bracket		—	—	—	1	—
R-24	500593-6	Pin – plunger		—	—	—	1	—
Early Production								
R-35	97-354-11	Shift Rod Bracket		1	1	1	—	1
R-36	97-438-2	Plunger		1	1	1	—	1
R-39	97-72-8	Spring – plunger		1	1	1	—	1
R-40	97-381-3	Snap Ring		1	1	1	—	1
PARTS LISTED BELOW ARE NOT INCLUDED IN ASSEMBLY								
K-1	97-155-1	Gasket – shifter housing		1	1	1	1	1
K-2	330564-1	Lift Hook		4	4	4	4	4
K-3	545002-4	Bolt – 3/8"-16 x 1 1/8" hex head self locking		10	10	10	10	10
K-4	330360-15	Stud – 5/8"-11 & 5/8"-18 x 3 1/2"		2	2	—	2	2
K-4	330360-18	Stud – 5/8"-11 & 5/8"-18 x 4"		2	2	—	2	2
K-4	330426-1	Stud – 7/16"-14 & 7/16"-20 x 2 5/8"		—	—	2	—	—
K-5	500357-12	Flat Washer – 7/16"		—	—	2	—	—
K-5	500365-43	Flat Washer – 5/8"		2	2	—	2	2
K-6	500371-4	Nut – 7/16"-20		—	—	2	—	—
K-6	500371-7	Nut – 5/8"-18		2	2	—	2	2

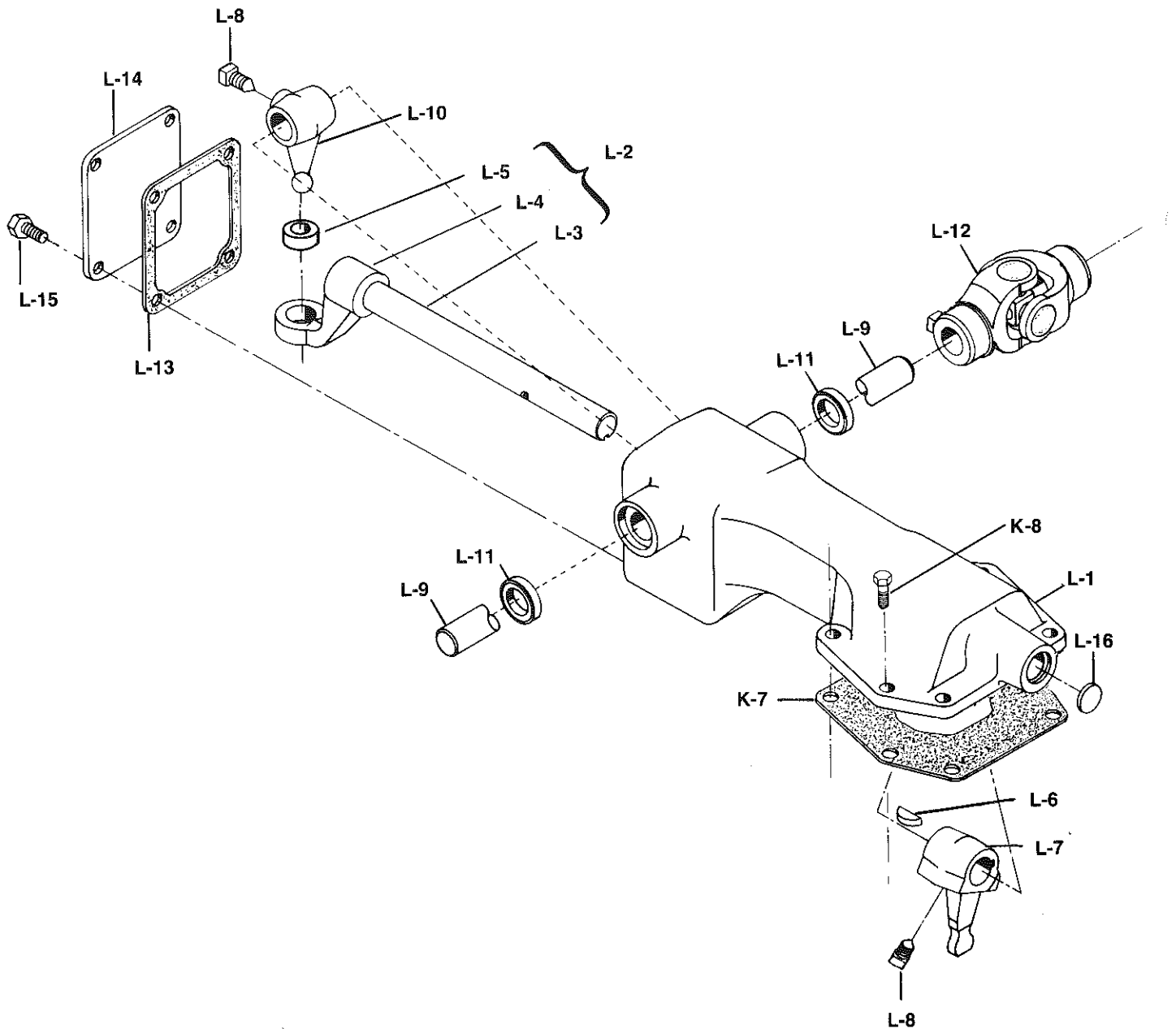
N.S. – Not Shown

MODELS 1362, 1364 and 1463

REMOTE CONTROL ASSEMBLY High Rod Type

SPICER®

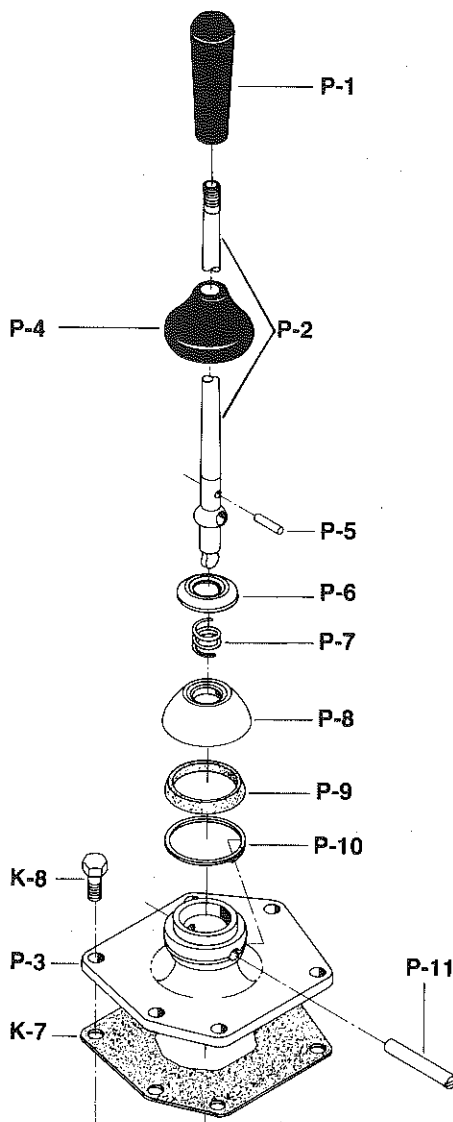
T210-SST-6



Ref. No.	Part No.	Part Description	Assembly No.	97-18-3-2X	8049X	311695-4X	311695-7X	311890X
	See Tab Bills	COVER & JOINT ASSEMBLY		1	1	1	1	1
	97-16-32-1X	Cover Assembly		—	—	—	1	—
	97-18-3-1X	Cover Assembly (Positioned at 180°)		1	—	—	—	—
	311866X	Cover Assembly		—	1	—	—	—
	311914X	Cover Assembly		—	—	—	—	1
	312918X	Cover Assembly		—	—	1	—	—
L-1	N.S.S.	Remote Control Cover		1	1	1	1	1
N.S.	82-24-3	Bushing		4	4	4	4	4
L-2	97-65-15-1X	Shift Finger Rod and Bracket Assembly		—	—	—	1	—
	97-65-32-1X	Shift Finger Rod and Bracket Assembly		1	—	—	—	—
	8039X	Shift Finger Rod and Bracket Assembly		—	1	—	—	—
	311888X	Shift Finger Rod and Bracket Assembly		—	—	—	—	1
	312917X	Shift Finger Rod and Bracket Assembly		—	—	1	—	—
L-3	N.S.S.	Rod – shift finger		1	1	1	1	1
L-4	N.S.S.	Bracket – shift finger rod		1	1	1	1	1
L-5	85-24-4	Bushing – shift rod bracket		1	1	1	1	1
N.S.	N.S.S.	Woodruff Key #11 (part of assembly)		1	1	1	1	1
L-6	500007-19	Woodruff Key #11		1	1	1	1	1
L-7	82-6-9	Finger – inner shift		1	1	1	1	1
L-8	545004	Bolt – 7/16"-20 x 1 3/16" hex head self locking		2	2	2	2	2
L-9	82-65-5	Rod – remote control shift		1	1	—	—	1
L-9	82-65-22	Rod – remote control shift (counter sunk spot at 90°)		—	—	1	1	—
L-10	82-6-7	Finger – outer shift		1	1	1	1	1
L-11	28P-19	Seal – remote control shift rod		2	2	2	2	2
L-12	10380-SF	U-Joint Assembly – control rod		1	1	1	1	1
L-13	82-118-1	Gasket – aperture cover		1	1	1	1	1
L-14	82-96-1	Aperture Cover		1	1	1	1	1
L-15	545005-1	Bolt – 5/16"-18 x 5/8" hex head self locking		4	4	4	4	4
L-16	500166-16	Expansion Plug – 1 1/16"		1	1	1	1	1
N.S.	311903X	Boot Kit – remote control		—	—	1	1	—
N.S.	82-483-1	Boot – standard		—	—	1	1	—
N.S.	82-483-2	Boot – cup type		—	—	1	1	—
N.S.	LW-3-9	Lockwire		—	—	3	3	—
PARTS LISTED BELOW ARE NOT INCLUDED IN ASSEMBLY								
K-7	97-155-12	Gasket – to remote control cover (six holes)		1	1	1	1	1
K-8	545028-4	Bolt – 7/16"-14 x 1 1/8" hex head self locking		6	6	6	6	6

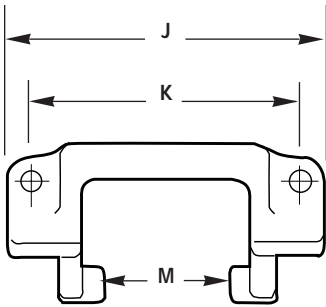
N.S. – Not Shown
N.S.S. – Not Sold Separately

MODELS 1362, 1364 and 1463 SHIFT LEVER and DOME ASSEMBLY



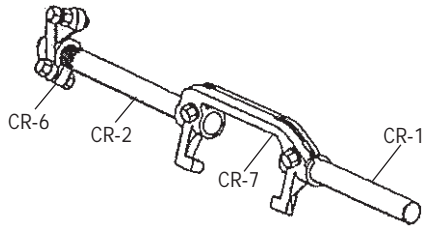
Ref. No.	Part No.	Part Description	Qty.
		Shift Lever and Dome Assembly	1
P-1	312837X	Handle – shift lever	1
P-2	39Q-29	Shift Lever – Length 35½"	1
	25Q-1223		
	82-16-19X	Dome Assembly – shift lever	1
P-3	82-16-19	Dome – shift lever (2½" height)	1
P-4	55Q-5	Grommet – shift lever	1
P-5	286-SP	Pin – shift lever collar	1
P-6	55Q-7	Collar – compression	1
P-7	56Q-25	Spring – compression	1
P-8	54Q-13	Cup – compression	1
P-9	69Q-6	Washer – friction	1
P-10	62-381-7	Snap Ring	1
P-11	53Q-15	Shaft – shift lever rock	1
		PARTS LISTED BELOW ARE NOT INCLUDED IN ASSEMBLY	
K-7	82-155-6	Gasket – dome to shifter housing	1
K-8	545028-4	Bolt – 7/16"-14 x 1 1/8" hex head self locking	6

Clutch Release Components



CR-7 Clutch Release Yokes*

Type	Item #	Forging #	Width (J)	Bolt CL (K)	Inside Ear (M)	Note
Pull	105C-137	F105C138	8.000	6.500	4.895	
Pull	105C-143	F105C141	8.000	6.500	4.895	Extended Pivot Point (1.45 from C/L)
Pull	105C-64	F105C64	8.000	6.500	4.895	Clutch Release Pads - 30 Degree Offset
Push	105C-117	F105C118	8.375	7.000	4.885	Machined washer surface on yoke front
Push	105C-124	F105C125	3.750	2.125	2.885	
Push	105C-130	F105C94	3.750	2.125	2.885	
Push	105C-132	F105C118	8.375	7.000	4.885	Machined washer surface on yoke rear (for clearance)
Push	85-509-3	F105C118	8.375	7.000	4.885	Same as 105C-117, except contains spring holes in lug



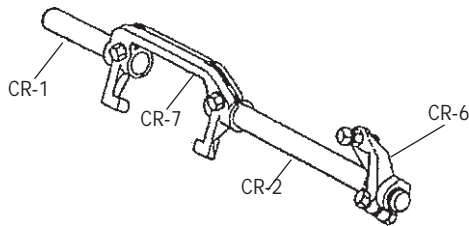
**Pedal Adjusting Arm
Right Side -310473X**

CR-1 Short Release Shaft

Type	Length	Item #
RS-1	4.812	106C-1278
RS-1	5.750	106C-1185
RS-1	5.750	62-510-22
RS-1	6.000	80-510-3
RS-1	6.125	106C-1142
RS-1	6.500	106C-1498
RS-5	10.438	106C-636
RS-5	11.375	106C-1515
RS-5	14.000	106C-438

CR-2 Long Release Shaft

Type	Length	Item #	Type
Keyed	6.870	106C-1589	RS-10
Keyed	7.125	46-510-9	RS-10
Keyed	8.312	106C-1529	RS-3
Keyed	9.020	97-510-7	RS-10
Keyed	9.690	97-510-5	RS-10
Keyed	11.380	97-510-6	RS-10
Splined	7.625	106C-1315	RS-8
Splined	7.969	106C-1083	RS-8
Splined	8.250	46-510-11	RS-8
Splined	8.469	106C-1094	RS-8
Splined	8.719	106C-960	RS-8
Splined	8.968	106C-1046	RS-8
Splined	9.125	106C-1169	RS-8
Splined	9.220	67-510-5	RS-9
Splined	9.469	106C-1047	RS-8
Splined	9.469	330610-5	RS-9
Splined	9.500	330610-10	RS-9
Splined	9.750	106C-953	RS-8
Splined	10.000	106C-939	RS-8
Splined	10.312	106C-1367	RS-8
Splined	10.469	106C-617	RS-8
Splined	10.750	330610-11	RS-9
Splined	11.469	106C-839	RS-8
Splined	11.968	106C-959	RS-8



**Pedal Adjusting Arm
Left Side-310233X**

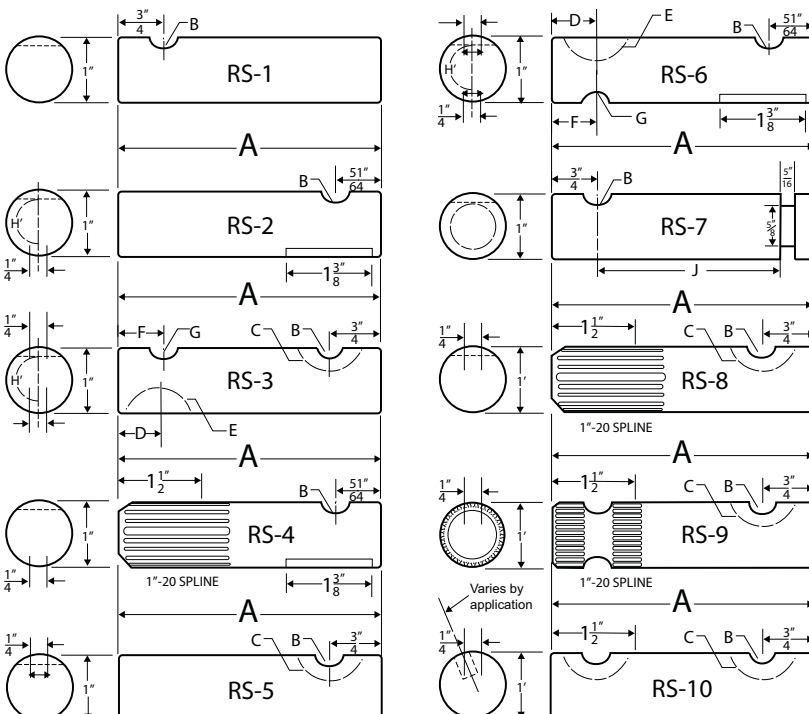
CR-6 Pedal Adjusting Arm Kit

Item #	Note
310233X	Left Side Mtg
310473X	Right Side Mtg
310873X	Lever Type 7.25 LH or RH

Splined Thru Shaft (used with Push Type Clutch)

Length	Item #
19.125	106C-1566
19.313	97-510-2
19.500	106C-1578

Clutch Release Shafts



To Order Clutch Release Shafts

1. Select Type from illustrations (left)
2. Determine lengths "A", "D" & "J"

In the tables above, only the more widely used Clutch Release Shafts are listed.

In the illustrations (left): Dimension "C" with a 0.250" Key Slot for 1-30 Round Key.

Dimension "B" with a 0.218" Notch for 330231 Screw.

* CLUTCH RELEASE YOKE ATTACHING PARTS — use one KEY 10-30, two SCREWS 330231, and two LOCK WASHERS 500356-12.

Part No.	Part Description	Qty.
MAJOR SERVICE KITS		
313400-38X	MAJOR SERVICE KIT	1
97-35-54	Drive Gear Shaft 2"-10 Spline	1
500566-8	Ball – reverse idler shaft	2
500010-8	Woodruff Key #29	10
545065	Nut – mainshaft	1
	Repair Bulletin	1
313401-22X	Thrust Washer Kit	1
313429-3X	Shift Housing Small Parts Kit	1
313432-8X	Minor Service Kit	1
MINOR SERVICE KITS (Included in Major Service Kit)		
313432-8X	MINOR SERVICE KIT	1
BEARINGS		
550950	Countershaft – rear	2
550031	Countershaft – front	2
550886	Reverse Idler Shaft	4
550925	Mainshaft – rear	1
550994	Drive Gear – front	1
550946	Drive Gear – pocket	1
97-463-32	Oil Seal – drive gear	1
97-463-33	Oil Seal – mainshaft (rear)	1
545077	Bearing Lubricant	1
545080	Loctite	1
2770	Bearing Lube Instructions	1
2775	Pocket Bearing Installation Instructions	1
2783	Loctite Application for M/S Nuts	1
312475-34X	GASKET KIT	1
313024-8X	SNAP RING KIT	1

Part No.	Part Description	Qty.
Included in MAJOR SERVICE KITS		
313401-22X	Thrust Washer Kit	
330730	Mainshaft – internal (15T)	3
330732	Mainshaft – external (17T)	1
330735	Mainshaft – internal (13T)	2
330810	Mainshaft – external (24T)	2
330814	Mainshaft – external (20T)	3
330869	Mainshaft – internal (18T)	3
97-47-4	Mainshaft – bearing	1
313429-2X	Shifter Housing Small Parts Kit	
97-12-1	Interlock	3
50-80-5	Poppet Ball	4
194-SP	Pin – shift rod	2
97-438-1	Plunger – 1st and reverse	1
97-438-2	Plunger – 5th and 6th	1
330739-1	Pin – backup lite	1
500593-6	Pin – plunger	1
545000	Blocker Pin – center control	1
545010	Blocker Pin – forward control	1
97-72-2	Spring – 1st and reverse	1
97-72-8	Spring – 5th and 6th	1
97-72-11	Spring – poppet ball	4
97-72-12	Spring – plunger	1
97-72-17	Spring – plunger	1
97-381-3	Snap Ring – plunger	1
Included in MAJOR and MINOR SERVICE KITS		
312475-34X	GASKET KIT	
22P-22	P.T.O. Aperture Cover (8 holes)	1
46-324-1	P.T.O. Aperture Cover (6 holes)	1
97-155-1	Shifter Housing Case	1
97-223-2	M/S Rear Bearing Cap	1
97-223-22	C/S Rear Bearing Cap	2
97-223-25	Piston Housing	1
97-155-12	Tower – center (6 holes)	1
97-155-13	Tower – forward (4 holes)	1
97-223-1	Drive Gear Bearing Cap	1
97-352-1	Clutch Housing	1
82-118-1	Aperture Cover – remote control	1
313024-8X	SNAP RING KIT	
70-381-6	Drive Gear retainer	1
97-381-6	Mainshaft – internal small	3
97-381-2	Mainshaft – internal	3
97-381-4	Mainshaft – external	3
97-381-30	Countershaft – retainer front	2
97-381-32	Mainshaft – internal	2
97-381-34	Countershaft – backing rear	2
97-381-35	Mainshaft – external	2
98-381-1	Mainshaft – external	3
98-381-2	Mainshaft – internal	1

MODELS 1362, 1364 and 1463

TABULATED BILLS of MATERIAL

SPICER®

T210-SST-6

Tab. No.	Used By	For Use With Clutch	CLUTCH HOUSING			Drive Gear Input Shaft (Two Pieces) A-1	Drive Gear Bearing Cap Assembly F-2	Main Case Assembly G-1
			S A E	Assembly No. E-2	Rel. Code Page 19			
301169 – Model 1362-A								
-1	IHC	Spicer Pull Type	1	97-518-16-1X	—	97-35-54	97-19-36-1X	97-15-42-1X
-2	White	Spicer Pull Type	2	97-518-18-1X	—	97-35-54	97-19-36-1X	97-15-42-1X
-3	Kenworth (Can.)	Spicer Pull Type	1	97-518-16-1X	1	97-35-54	97-19-36-1X	97-15-42-1X
-4	Ford	Spicer Pull Type	2	97-518-18-1X	—	97-35-54	97-19-36-1X	97-15-42-1X
* -5	Crown Coach	Spicer Pull Type	1	97-518-16-1X	2	97-35-54	97-19-36-1X	97-15-42-1X
-6	White	Spicer Pull Type	1	97-518-28-1X	—	97-35-54	97-19-36-1X	97-15-42-1X
-7	White	Spicer Pull Type	1	97-518-28-1X	—	97-35-54	97-19-36-1X	97-15-42-1X
-8	Ford	Spicer Pull Type	1	97-518-25-1X	—	97-35-54	97-19-36-1X	97-15-42-1X
* -9	Mack	Spicer Pull Type	1	312961X	—	97-35-54	97-19-36-1X	97-15-42-1X
-10	Service	Spicer Pull Type	—	—	—	97-35-54	97-19-36-1X	97-15-42-1X
-11	White	Spicer Pull Type	1	97-518-25-1X	—	97-35-54	97-19-36-1X	97-15-42-1X
-12	White	Spicer Pull Type	1	97-518-25-1X	—	97-35-54	97-19-36-1X	97-15-42-1X
* -13	Peterbilt	Spicer Pull Type	1	97-518-16-1X	3	97-35-54	97-19-36-1X	97-15-42-1X
-14	Freightliner Corp.	Spicer Pull Type	1	97-518-16-1X	—	97-35-54	97-19-36-1X	97-15-42-1X
-15	Peterbilt	Spicer Pull Type	1	97-518-16-1X	—	97-35-54	97-19-36-1X	97-15-42-1X
-16	Am. La France	Spicer Pull Type	1	97-518-16-1X	1	97-35-54	97-19-36-1X	97-15-42-1X
301171 – Model 1362-B								
-1	Service	Spicer Pull Type	1	97-518-16-1X	—	97-35-54	97-19-36-1X	97-15-42-1X
-2	Prevost	Lipe Push Type	1	97-518-15-1X	8	97-35-53	97-19-35-1X	97-15-42-1X
-3	Ford	Spicer Pull Type	2	97-518-18-1X	—	97-35-54	97-19-36-1X	97-15-42-1X
-4	Ford	Spicer Pull Type	1	97-518-25-1X	—	97-35-54	97-19-36-1X	97-15-42-1X
* -5	Hendrickson	Spicer Pull Type	2	97-518-18-1X	2	97-35-54	97-19-36-1X	97-15-42-1X
-6	Kenworth	Spicer Pull Type	1	97-518-16-1X	1	97-35-54	97-19-36-1X	97-15-42-1X
-7	Service	Spicer Pull Type	2	97-518-18-1X	—	97-35-54	97-19-36-1X	97-15-42-1X
-8	White	Spicer Pull Type	1	97-518-28-1X	—	97-35-54	97-19-36-1X	97-15-42-1X
-9	Freightliner	Spicer Pull Type	1	97-518-16-3X	—	97-35-54	97-19-36-1X	97-15-42-1X
* -10	Service	Spicer Pull Type	1	97-518-16-1X	4	97-35-54	97-19-36-1X	97-15-42-1X
-11	White	Spicer Pull Type	1	97-518-28-1X	—	97-35-54	97-19-36-1X	97-15-42-1X
-12	Ford	Spicer Pull Type	1	97-518-16-1X	—	97-35-54	97-19-36-1X	97-15-42-1X
▲ -13	GMC	Spicer Pull Type	1	97-518-28-1X	—	97-35-54	97-19-36-1X	97-15-42-2X
-14	Service	Spicer Pull Type	—	—	—	97-35-54	97-19-36-1X	97-15-42-1X
* -15	Hendrickson	Spicer Pull Type	2	312795X	4	97-35-54	97-19-36-1X	97-15-42-1X
-16	GMC	Sicer Pull Type	2	97-518-14-1X	—	97-35-54	97-19-36-1X	97-15-42-2X
-17	White	Spicer Pull Type	1	97-518-28-1X	—	97-35-54	97-19-36-1X	97-15-42-1X
* -18	Hendrickson	Spicer Pull Type	1	97-518-25-1X	5	97-35-54	97-19-36-1X	97-15-42-1X
-19	Ford	Spicer Pull Type	2	97-518-18-1X	—	97-35-54	97-19-36-1X	97-15-42-1X
-20	Mack	Spicer Pull Type	1	97-518-28-1X	—	97-35-54	97-19-36-1X	97-15-42-1X
-21	Freightliner	Spicer Pull Type	1	97-518-16-3X	—	97-35-54	97-19-36-1X	97-15-42-1X
-22	IHC	Spicer Pull Type	1	97-518-16-1X	—	97-35-54	97-19-36-1X	97-15-42-1X
-23	White	Spicer Pull Type	1	97-518-25-1X	—	97-35-54	97-19-36-1X	97-15-42-1X
-24	White	Spicer Pull Type	1	97-518-28-1X	—	97-35-54	97-19-36-1X	97-15-42-1X
* -25	Peterbilt	Spicer Pull Type	1	97-518-16-1X	3	97-35-54	97-19-36-1X	97-15-42-1X
-26	Freightliner	Spicer Pull Type	1	97-518-16-1X	—	97-35-54	97-19-36-1X	97-15-42-1X
-27	Freightliner	Spicer Pull Type	1	97-518-16-3X	—	97-35-54	97-19-36-1X	97-15-42-1X
* -28	Peterbilt	Spicer Pull Type	1	97-518-16-1X	—	97-35-54	97-19-36-1X	97-15-42-1X
* -29	Prevost	Spicer Pull Type	1	97-518-15-1X	3	97-35-54	97-19-36-1X	97-15-42-1X

*—Includes Clutch Brake Assembly 127760X

▲—97-454-2-1X Assembly includes one 97-454-2 drive gear and one 97-463-34 seal.

Tab No.	REAR BRG. CAP ASS'Y.		SPEEDOMETER		End Yoke or Companion Flange	SHIFTER		
	Cap Bushing and Seal	Cap and Bushing	Drive Gear	Driven Gear		Housing Assembly	Lever & Dome Ass'y.	Remote Control
	H-2	H-4	B-28	H-7		B-26	Pages 12-15	Page 18
301169 – Model 1362-A								
-1	97-19-32-2X	97-19-32-1X	—	—	—	97-16-62-29X	—	—
-2	97-19-32-2X	97-19-32-1X	—	—	—	97-16-62-29X	—	—
-3	97-19-46-1X	—	97-452-14	—	6-4-5351	97-16-62-29X	—	—
-4	97-19-32-2X	97-19-32-1X	—	—	—	97-16-25-76X	—	—
-5	97-19-32-2X	97-19-32-1X	—	—	6-1-4881	97-16-62-29X	—	8049X
-6	97-19-32-2X	97-19-32-1X	—	—	—	97-16-62-29X	—	—
-7	97-19-32-2X	97-19-32-1X	—	—	—	97-16-25-76X	—	—
-8	97-19-32-2X	97-19-32-1X	—	—	—	97-16-62-29X	—	—
-9	97-19-32-2X	97-19-32-1X	97-452-2	97-453-1	—	97-16-62-29X	—	—
-10	97-19-32-2X	97-19-32-1X	—	—	—	—	—	—
-11	97-19-32-2X	97-19-32-1X	—	—	—	97-16-62-29X	—	—
-12	97-19-32-2X	97-19-32-1X	—	—	—	97-16-25-76X	—	—
-13	97-19-32-2X	97-19-32-1X	—	—	6-4-5351	97-16-62-29X	—	—
-14	97-19-46-1X	—	97-452-14	—	—	97-16-62-33X	—	—
-15	97-19-32-2X	97-19-32-1X	—	—	—	97-16-62-29X	—	—
-16	97-19-32-2X	97-19-32-1X	97-452-2	97-453-1	—	97-16-62-29X	—	8049X
301171 – Model 1362-B								
-1	97-19-32-2X	97-19-32-1X	—	—	—	97-16-62-29X	—	—
-2	97-19-32-2X	97-19-32-1X	97-452-2	97-453-1	6-1-4881	97-16-62-29X	—	97-18-3-2X
-3	97-19-32-2X	97-19-32-1X	—	—	—	97-16-25-76X	—	—
-4	97-19-32-2X	97-19-32-1X	—	—	—	97-16-62-29X	—	—
-5	97-19-32-2X	97-19-32-1X	97-452-2	97-453-1	—	97-16-62-29X	—	8049X
-6	97-19-46-1X	—	97-452-14	—	6-4-5351	97-16-62-29X	—	—
-7	97-19-32-2X	97-19-32-1X	—	—	—	97-16-62-29X	—	—
-8	97-19-32-2X	97-19-32-1X	—	—	—	97-16-62-29X	—	—
-9	97-19-46-1X	—	97-452-14	—	—	97-16-62-33X	—	—
-10	97-19-32-2X	97-19-32-1X	97-452-2	97-453-1	6-1-4881	97-16-62-29X	—	8049X
-11	97-19-32-2X	97-19-32-1X	—	—	—	97-16-25-76X	—	—
-12	97-19-32-2X	97-19-32-1X	—	—	—	97-16-25-76X	—	—
-13	97-19-32-2X	97-19-32-1X	97-452-2	97-453-1	6-4-5351	97-16-62-29X	—	—
-14	97-19-32-2X	97-19-32-1X	—	—	—	—	—	—
-15	97-19-32-2X	97-19-32-1X	97-452-2	97-453-1	—	97-16-62-29X	—	311695-4X
-16	97-19-32-2X	97-19-32-1X	97-452-2	97-453-1	6-4-5351	97-16-25-76X	—	—
-17	97-19-32-2X	97-19-32-1X	97-452-2	97-453-1	6-4-5351	97-16-25-76X	—	—
-18	97-19-32-2X	97-19-32-1X	97-452-2	97-453-1	—	97-16-62-29X	—	8049X
-19	97-19-32-2X	97-19-32-1X	97-452-13	—	6-4-5351	97-16-25-76X	—	—
-20	97-19-32-2X	97-19-32-1X	97-452-6	—	—	97-16-62-29X	—	—
-21	97-19-46-1X	—	97-452-14	—	—	97-16-62-33X	—	—
-22	97-19-32-2X	97-19-32-1X	—	—	—	97-16-25-76X	—	—
-23	97-19-32-2X	97-19-32-1X	97-452-2	97-453-1	—	97-16-25-76X	—	—
-24	97-19-32-2X	97-19-32-1X	97-452-2	—	6-4-5351	97-16-62-29X	—	—
-25	97-19-32-2X	97-19-32-1X	—	—	6-4-5351	97-16-62-29X	—	—
-26	97-19-46-1X	—	97-452-14	—	—	97-16-62-33X	—	—
-27	97-19-46-1X	—	97-452-14	—	—	97-16-62-33X	—	—
-28	97-19-32-2X	97-19-32-1X	—	—	—	97-16-62-29X	—	—
-29	97-19-32-2X	97-19-32-1X	97-452-2	97-453-1	6-1-4881	97-16-62-29X	—	97-18-3-2X

MODELS 1362, 1364 and 1463

SPICER®

T210-SST-6

TABULATED BILLS of MATERIAL

Tab. No.	Used By	For Use With Clutch	CLUTCH HOUSING			Drive Gear Input Shaft (Two Pieces) A-1	Drive Gear Bearing Cap Assembly F-2	Main Case Assembly G-1
			S A E	Assembly No. E-2	Rel. Code Page 19			
301175 – Model 1463-A								
-1	IHC	Spicer Pull Type	1	97-518-16-1X	—	97-35-54	97-19-36-1X	97-15-42-1X
-2	Kenworth	Spicer Pull Type	1	97-518-16-1X	1	97-35-54	97-19-36-1X	97-15-42-1X
* -3	Service	Spicer Pull Type	1	97-518-16-1X	4	97-35-54	97-19-36-1X	97-15-42-1X
* -4	Turner	■	1	97-518-25-1X	6	97-35-54	97-19-43-2X	97-15-42-1X
* -5	Peterbilt	Spicer Pull Type	1	97-518-16-1X	3	97-35-54	97-19-36-1X	97-15-42-1X
* -6	Pacific Truck & Trl.	Spicer Pull Type	1	97-518-16-1X	7	97-35-54	97-19-36-1X	97-15-42-1X
* -7	Brockway Mtrs.	Spicer Pull Type	2	97-518-18-1X	4	97-35-54	97-19-36-1X	97-15-42-1X
-8	Never Released for Production							
* -9	Service	Spicer Pull Type	1	97-518-16-1X	4	97-35-54	97-16-36-1X	97-15-42-1X
-10	Freightliner	Spicer Pull Type	1	97-518-16-1X	—	97-35-54	97-16-36-1X	97-15-42-1X
-11	White	Spicer Pull Type	1	97-518-25-1X	—	97-35-54	97-16-36-1X	97-15-42-1X
-12	Service	Spicer Pull Type	2	97-518-18-1X	—	97-35-54	97-16-36-1X	97-15-42-1X
-13	White	Spicer Pull Type	1	97-518-25-1X	—	97-35-54	97-16-36-1X	97-15-42-1X
-14	Ford	Spicer Pull Type	2	97-518-18-1X	—	97-35-54	97-16-36-1X	97-15-42-1X
-15	Autocar	Spicer Pull Type	1	97-518-16-1X	—	97-35-54	97-16-36-1X	97-15-42-1X
-16	Ford	Spicer Pull Type	1	97-518-16-1X	—	97-35-54	97-19-36-1X	97-15-42-1X
-17	White	Spicer Pull Type	1	97-518-28-1X	—	97-35-54	97-19-36-1X	97-15-42-1X
* -18	Mack	Spicer Pull Type	1	97-518-16-1X	—	97-35-54	97-19-36-1X	97-15-42-1X
* -19	Service	Spicer Pull Type	2	97-518-18-1X	4	97-35-54	97-19-36-1X	97-15-42-1X
§-20	Service	Spicer Pull Type	—	—	—	97-35-54	97-19-36-1X	97-15-42-1X
* -21	Mack	Spicer Pull Type	1	312961X	—	97-35-54	97-19-36-1X	97-15-42-1X
-22	Ford	Spicer Pull Type	1	97-518-16-1X	—	97-35-54	97-19-36-1X	97-15-42-1X
* -23	Mack	Spicer Pull Type	1	312961X	—	97-35-54	97-19-36-1X	97-15-42-1X
-24	IHC	Spicer Pull Type	1	97-518-16-1X	—	97-35-54	97-19-36-1X	97-15-42-1X
* -25	Hendrickson	Spicer Pull Type	2	97-518-18-1X	4	97-35-54	97-19-36-1X	97-15-42-1X
* -26	Dynatel (Can.)	Spicer Pull Type	1	97-518-16-1X	4	97-35-54	97-19-36-1X	97-15-42-1X
-27	Peterbilt	Spicer Pull Type	1	97-518-16-1X	—	97-35-54	97-19-36-1X	97-15-42-1X
* -28	Mack	Spicer Pull Type	1	97-518-28-1X	—	97-35-54	97-19-36-1X	97-15-42-1X
301178 – Model 1362-C								
-1	IHC	Spicer Pull Type	1	97-518-16-1X	—	97-35-54	97-18-36-1X	97-15-42-1X
-2	Freightliner	Spicer Pull Type	1	97-518-16-1X	—	97-35-54	97-19-36-1X	97-15-42-1X
-3	GMC	Spicer Pull Type	2	97-518-14-1X	—	97-35-54	97-19-36-1X	97-15-42-2X
-4	Ford	Spicer Pull Type	2	97-518-18-1X	—	97-35-54	97-19-36-1X	97-15-42-1X
-5	Ford	Spicer Pull Type	1	97-518-25-1X	—	97-35-54	97-19-36-1X	97-15-42-1X
* -6	Peterbilt	Spicer Pull Type	1	97-518-16-1X	3	97-35-54	97-19-36-1X	97-15-42-1X
-7	Crane Carrier	Spicer Pull Type	1	97-518-25-1X	—	97-35-54	97-19-36-1X	97-15-42-1X
-8	IHC	Spicer Pull Type	1	97-518-16-1X	—	97-35-54	97-19-36-1X	97-15-42-1X
-9	Ford	Spicer Pull Type	1	97-518-16-1X	—	97-35-54	97-19-36-1X	97-15-42-1X
-10	Crane Carrier	Spicer Pull Type	1	97-518-25-1X	4	97-35-54	97-19-36-1X	97-15-42-1X

* – Includes Clutch Brake Assembly 127760X

§ – Short Box

■ – Spicer Spring Loaded Upshifting Clutch Brake

Tab No.	REAR BRG. CAP ASS'Y		SPEEDOMETER		End Yoke or Companion Flange	SHIFTER		
	Cap Bushing and Seal	Cap and Bushing	Drive Gear	Driven Gear		Housing Assembly	Lever & Dome Ass'y.	Remote Control
	H-2	H-4	B-28	H-7		Pages 12-15	Page 18	Pages 16-17
301175 – Model 1463-A								
-1	97-19-32-2X	97-19-32-1X	—	—	—	97-16-62-29X	—	—
-2	97-19-46-1X	—	97-452-14	—	6-4-5351	97-16-62-29X	—	—
-3	97-19-32-2X	97-19-32-1X	97-452-2	97-453-1	6-4-5351	97-16-62-29X	—	—
-4	97-19-32-2X	97-19-32-1X	97-452-6	97-453-8	6.5-1-1991	97-16-62-40X	—	311695-7X
-5	97-19-32-2X	97-19-32-1X	—	—	6-4-5351	97-16-62-29X	—	—
-6	97-19-32-2X	97-19-32-1X	97-452-2	97-453-1	—	97-16-62-29X	312837X	—
-7	97-19-32-2X	97-19-32-1X	97-452-2	97-453-1	6.5-4-3021	97-16-25-76X	—	—
-8	Never Released for Production							
-9	97-19-32-2X	97-19-32-1X	97-452-2	97-453-1	6-1-4881	97-16-62-29X	—	8049X
-10	97-19-32-2X	97-19-32-1X	—	—	—	97-16-62-33X	—	—
-11	97-19-32-2X	97-19-32-1X	—	—	—	97-16-62-29X	—	—
-12	97-19-32-2X	97-19-32-1X	—	—	—	97-16-62-29X	—	—
-13	97-19-32-2X	97-19-32-1X	—	—	—	97-16-25-76X	—	—
-14	97-19-32-2X	97-19-32-1X	—	—	—	97-16-25-76X	—	—
-15	97-19-32-2X	97-19-32-1X	97-452-2	—	—	97-16-62-29X	—	—
-16	97-19-32-2X	97-19-32-1X	—	—	—	97-16-25-76X	—	—
-17	97-19-32-2X	97-19-32-1X	—	—	—	97-16-62-29X	—	—
-18	97-19-32-2X	97-19-32-1X	97-452-2	97-453-1	6-4-5351	97-16-62-29X	—	—
-19	97-19-32-2X	97-19-32-1X	—	—	6-1-4881	97-16-62-29X	312837X	—
-20	97-19-32-2X	97-19-32-1X	—	—	—	—	—	—
-21	97-19-32-2X	97-19-32-1X	97-452-2	97-453-1	—	97-16-62-29X	—	—
-22	97-19-32-2X	97-19-32-1X	—	—	—	97-16-62-29X	—	—
-23	97-19-32-2X	97-19-32-1X	97-452-6	—	—	97-16-62-29X	—	—
-24	97-19-32-2X	97-19-32-1X	—	—	—	97-16-25-76X	—	—
-25	97-19-32-2X	97-19-32-1X	97-452-2	97-453-1	—	97-16-62-29X	—	311890X
-26	97-19-32-2X	97-19-32-1X	—	—	6.5-4-3021	97-16-62-29X	312837X	—
-27	97-19-32-2X	97-19-32-1X	—	—	—	97-16-62-29X	—	—
-28	97-19-32-2X	97-19-32-1X	97-452-6	—	—	97-16-62-29X	—	—
301178 – Model 1362-C								
-1	97-19-32-2X	97-19-32-1X	—	—	—	97-16-62-29X	—	—
-2	97-19-32-2X	97-19-32-1X	—	—	—	97-16-62-33X	—	—
-3	97-19-32-2X	97-19-32-1X	97-452-2	97-453-1	—	97-16-62-29X	—	—
-4	97-19-32-2X	97-19-32-1X	—	—	—	97-16-25-76X	—	—
-5	97-19-32-2X	97-19-32-1X	—	—	—	97-16-62-29X	—	—
-6	97-19-32-2X	97-19-32-1X	—	—	6-4-5351	97-16-62-29X	—	—
-7	97-19-32-2X	97-19-32-1X	97-452-2	97-453-1	—	97-16-62-39X	—	8049X
-8	97-19-32-2X	97-19-32-1X	—	—	—	97-16-25-76X	—	—
-9	97-19-32-2X	97-19-32-1X	—	—	—	97-16-25-76X	—	—
-10	97-19-46-1X	—	97-452-14	—	—	97-16-62-39X	—	8049X

MODELS 1362, 1364 and 1463

SPICER®

T210-SST-6

TABULATED BILLS of MATERIAL

Tab. No.	Used By	For Use With Clutch	CLUTCH HOUSING			Drive Gear Input Shaft (Two Pieces) A-1	Drive Gear Bearing Cap Assembly F-2	Main Case Assembly G-1
			S A E	Assembly No. E-2	Rel. Code Page 19			
301178 – Model 1362-C (continued)								
*-11	Crane Carrier	Spicer Pull Type	2	312795X	4	97-35-54	97-19-36-1X	97-15-42-1X
-12	White	Spicer Pull Type	1	97-518-28-1X	—	97-35-54	97-19-36-1X	97-15-42-1X
-13	Ford	Spicer Pull Type	1	97-518-31-1X	—	97-35-54	97-19-36-1X	97-15-42-1X
-14	White	Spicer Pull Type	1	97-518-28-1X	—	97-35-54	97-19-36-1X	97-15-42-1X
-15	Mack	Spicer Pull Type	1	312961X	—	97-35-54	97-19-36-1X	97-15-42-1X
-16	Never Released for Production							
-17	Service	Spicer Pull Type	—	—	—	97-35-54	97-19-36-1X	97-15-42-1X
-18	Turner	■	1	97-518-16-1X	6	97-35-54	97-19-43-2X	97-15-42-1X
-19	Mack	Spicer Pull Type	1	312961X	—	97-35-54	97-19-36-1X	97-15-42-1X
▲-20	GMC	Spicer Pull Type	2	97-518-18-1X	—	97-35-54	97-19-36-1X	97-15-42-2X
-21	GMC	Spicer Pull Type	2	97-518-14-1X	—	97-35-54	97-19-36-1X	97-15-42-2X
-22	IHC	Spicer Pull Type	2	97-518-18-1X	—	97-35-54	97-19-36-1X	97-15-42-1X
-23	White	Spicer Pull Type	1	97-518-25-1X	—	97-35-54	97-19-36-1X	97-15-42-1X
-24	White	Spicer Pull Type	1	97-518-25-1X	—	97-35-54	97-19-36-1X	97-15-42-1X
-25	Freightliner	Spicer Pull Type	1	97-518-16-1X	—	97-35-54	97-19-36-1X	97-15-42-1X
-26	Kenworth	Spicer Pull Type	1	97-518-16-1X	1	97-35-54	97-19-36-1X	97-15-42-1X
-27	Peterbilt	Spicer Pull Type	1	97-518-16-1X	—	97-35-54	97-19-36-1X	97-15-42-1X
-28	Crane Carrier	Spicer Pull Type	1	97-518-25-1X	4	97-35-54	97-19-36-1X	97-15-42-1X
*-100	Commercial Carrier	Spicer Pull Type	1	97-518-16-1X	4	97-35-54	97-19-36-1X	97-15-42-1X
*-101	Schwerman	Spicer Pull Type	1	97-518-16-1X	4	97-35-54	97-19-36-1X	97-15-42-1X
301179 – Model 1364-C								
-1	IHC	Spicer Pull Type	1	97-518-16-1X	—	97-35-54	97-19-36-1X	97-15-43-1X
-2	Ford	Spicer Pull Type	1	97-518-31-1X	—	97-35-54	97-19-36-1X	97-15-43-1X
-3	White	Spicer Pull Type	1	97-518-28-1X	—	97-35-54	97-19-36-1X	97-15-43-1X
-4	Ford	Spicer Pull Type	2	97-518-18-1X	—	97-35-54	97-19-36-1X	97-15-43-1X
-5	Never Released for Production							
-6	Mack	Spicer Pull Type	1	312961X	—	97-35-54	97-19-36-1X	97-15-43-1X
-7	Freightliner	Spicer Pull Type	1	97-518-16-1X	—	97-35-54	97-19-36-1X	97-15-43-1X
-8	White	Spicer Pull Type	1	97-518-28-1X	—	97-35-54	97-19-36-1X	97-15-43-1X
-9	White	Spicer Pull Type	1	97-518-28-1X	—	97-35-54	97-19-36-1X	97-15-43-1X

*—Includes Clutch Brake Assembly 127760X

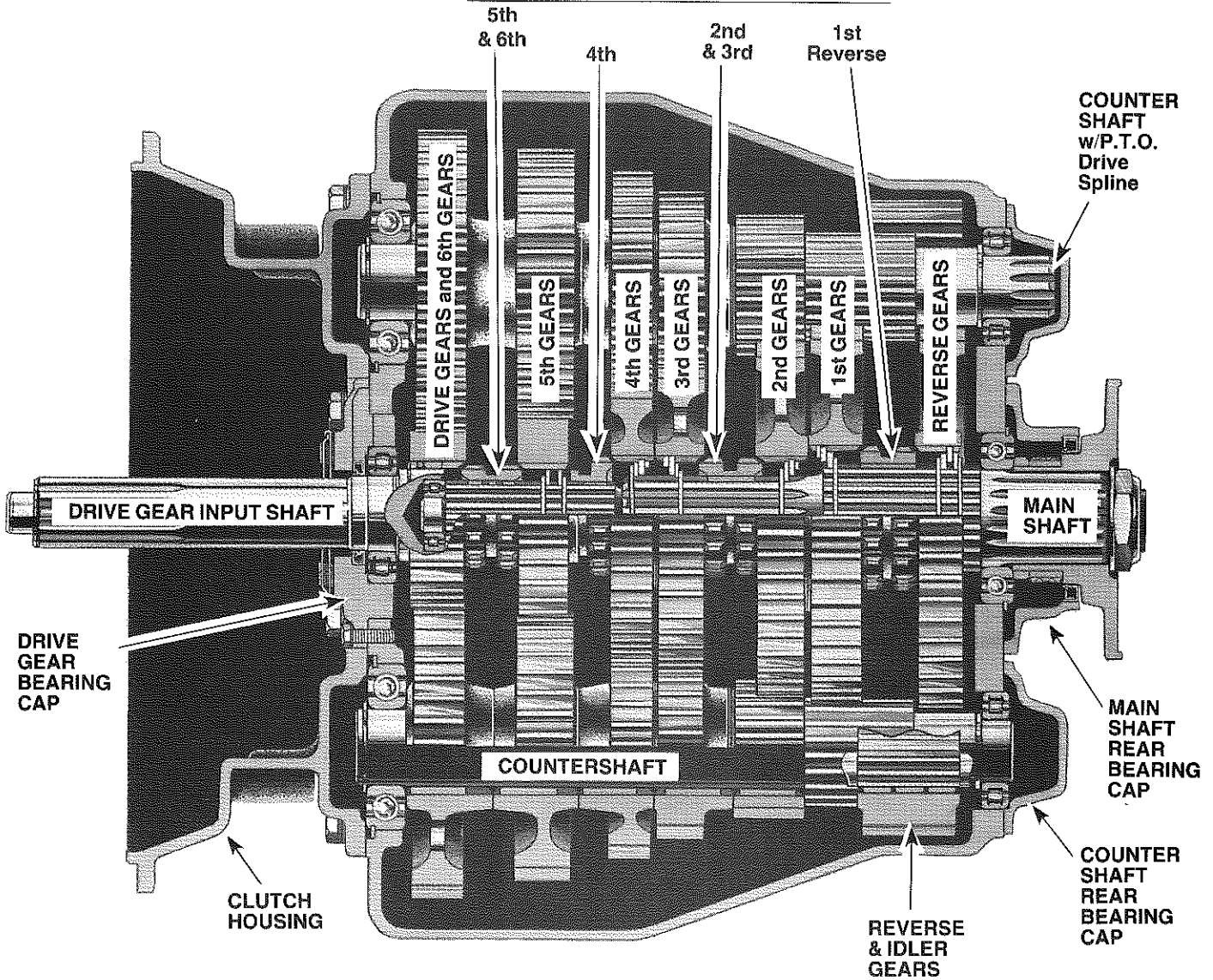
§—Short Box

■—Spicer Spring Loaded Upshifting Clutch Brake

▲ —97-454-2-1X Assembly includes one 97-454-2 Speedometer Sleeve and one 97-463-34 seal.

Tab No.	REAR BRG. CAP ASS'Y		SPEEDOMETER		End Yoke or Companion Flange	SHIFTER		
	Cap Bushing and Seal	Cap and Bushing	Drive Gear	Driven Gear		Housing Assembly	Lever & Dome Ass'y.	Remote Control
	H-2	H-4	B-28	H-7		Pages 12-15	Page 18	Pages 16-17
301178 – Model 1362-C (continued)								
-11	97-19-32-2X	97-19-32-1X	97-452-2	97-453-1	—	97-16-62-39X	—	8049X
-12	97-19-32-2X	97-19-32-1X	—	—	—	97-16-62-29X	—	—
-13	97-19-32-2X	97-19-32-1X	—	—	—	97-16-62-29X	—	—
-14	97-19-32-2X	97-19-32-1X	—	—	—	97-16-25-76X	—	—
-15	97-19-32-2X	97-19-32-1X	97-452-6	—	—	97-16-62-29X	—	—
-16	Never Released for Production							
-17	97-19-32-2X	97-19-32-1X	—	—	—	—	—	—
-18	97-19-32-2X	97-19-32-1X	97-452-6	97-453-8	6.5-1-2151	97-16-62-40X	—	—
-19	97-19-32-2X	97-19-32-1X	97-452-2	97-453-1	—	97-16-62-29X	—	—
-20	97-19-32-2X	97-19-32-1X	97-452-2	97-453-1	—	97-16-62-29X	—	—
-21	97-19-32-2X	97-19-32-1X	97-452-2	97-453-1	—	97-16-25-76X	—	—
-22	97-19-32-2X	97-19-32-1X	—	—	—	97-16-25-76X	—	—
-23	97-19-32-2X	97-19-32-1X	—	—	—	97-16-62-29X	—	—
-24	97-19-32-2X	97-19-32-1X	—	—	—	97-16-25-76X	—	—
-25	97-19-46-1X	—	97-452-14	—	—	97-16-62-33X	—	—
-26	97-19-46-1X	—	97-452-14	—	—	97-16-62-29X	—	—
-27	97-19-32-2X	97-19-32-1X	—	—	—	97-16-62-29X	—	—
-28	97-19-32-2X	97-19-32-1X	97-452-2	97-453-1	—	97-16-62-33X	—	8049X
-100	97-19-32-2X	97-19-32-1X	97-452-2	97-453-1	6-4-5351	97-16-39-29X	—	8049X
-101	97-19-32-2X	97-19-32-1X	97-452-2	97-453-1	6-4-5351	97-16-39-29X	—	8049X
301179 – Model 1364-C								
-1	97-19-32-2X	97-19-32-1X	—	—	—	97-16-62-29X	—	—
-2	97-19-32-2X	97-19-32-1X	—	—	—	97-16-62-29X	—	—
-3	97-19-32-2X	97-19-32-1X	97-452-2	97-453-1	—	97-16-62-29X	—	—
-4	97-19-32-2X	97-19-32-1X	—	—	—	97-16-25-76X	—	—
-5	Never Released for Production							
-6	97-19-32-2X	97-19-32-1X	97-452-6	—	—	97-16-62-29X	—	—
-7	97-19-46-1X	—	97-452-14	—	—	97-16-62-33X	—	—
-8	97-19-32-2X	97-19-32-1X	—	—	—	97-16-62-29X	—	—
-9	97-19-32-2X	97-19-32-1X	—	—	—	97-16-25-76X	—	—

CLUTCH COLLARS





14700 Helm Court
Plymouth, MI 48170
(800) 401-9866 or (734) 456-3770
Fax: (734) 456-3739
www.ttcautomotive.com

