



ES53-5

Parts Catalog

Bulletin No. T210-ES53-5

March 2000



MODEL ES53-5

CONTENTS, RATIO TABLE and IDENTIFICATION

T210-ES53-5

CONTENTS

| | |
|---|-------|
| RATIO TABLE | 1 |
| GEARS AND RELATED PARTS | 2-5 |
| DRIVE GEAR GROUP | 2-3 |
| MAINSHAFT GROUP | 2-3 |
| COUNTERSHAFT GROUP | 4-5 |
| REVERSE IDLER SHAFT GROUP | 4-5 |
| DRIVE GEAR TABLE | 5 |
| DRIVE GEAR BEARING CAP CHART WITH CLUTCH APPLICATIONS | 6 |
| CLUTCH HOUSING & DRIVE GEAR BEARING CAP GROUP | 6-7 |
| CLUTCH HOUSING DIMENSIONS | 7 |
| CASE GROUP | 8-9 |
| REAR BEARING CAP CHART WITH BRAKE APPLICATIONS | 10 |
| REAR BEARING CAP GROUP AND RELATED PARTS | 10-11 |
| REMOTE CONTROL ASSEMBLY | 12 |
| COMPANION FLANGES AND END YOKES | 13 |
| SHIFT BAR AND FORK ASSEMBLY | 14 |
| SHIFT LEVER AND DOME ASSEMBLY | 15 |
| CLUTCH RELEASE PARTS AND DIMENSIONS | 16-17 |
| OVERHAUL KITS—MAJOR AND MINOR | 18-19 |
| TABULATED BILLS OF MATERIALS | 20-23 |
| BACK-TAPER CHANGEOVER KITS | 24 |

RATIO TABLE

| SPEEDS | MODELS | |
|--------|---------|---------|
| | ES53-5A | ES53-5D |
| 1st | 7.25 | 7.25 |
| 2nd | 3.98 | 3.98 |
| 3rd | 2.23 | 2.23 |
| 4th | 1.44 | 1.29 |
| 5th | 1.00 | 1.00 |
| Rev. | 6.77 | 6.77 |

Parts listed in this catalog may no longer be available. Use with transmission superseding list.

IDENTIFICATION

The Name Plate (NP-96) affixed to the RIGHT side of the Transmission is stamped with information:

Abbreviations used in this parts list include:

- N.S. — Not Shown
- N.S.S. — Not Sold Separately
- N.R. — Not Required

SERIAL

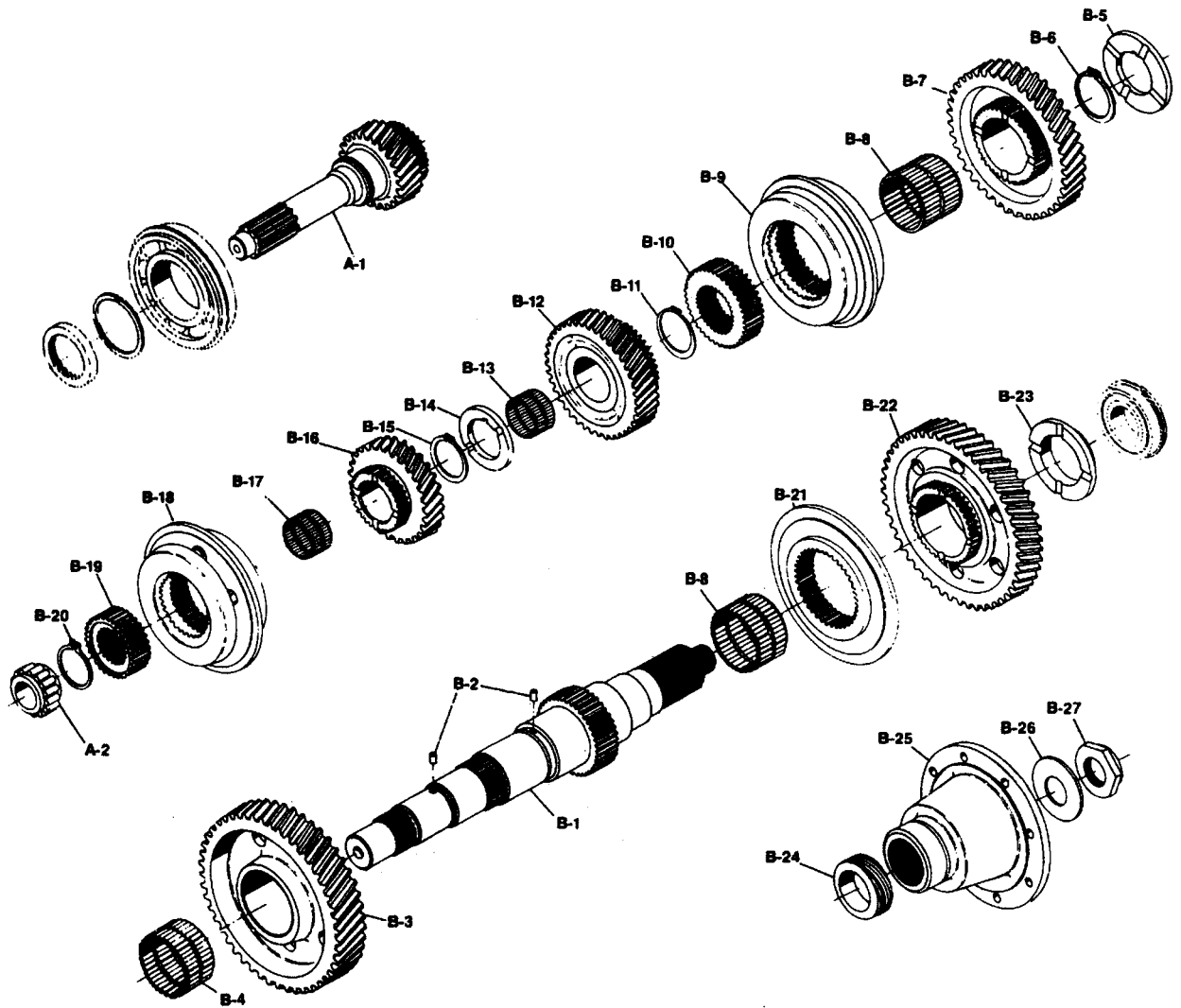
B/M No. MODEL

In requesting more information on these transmissions, furnish the B/M No. and the Serial Number.

MODEL ES53-5

GEARS and RELATED PARTS

T210-ES53-5



EASY SHIFT 5 SPEED MODELS (530 lb-ft)

GEARS and RELATED PARTS

T210-ES53-5

| Ref. No. | Part No. | Description | Qty. |
|---------------------------------|---------------|--|------|
| Drive Gear Group | | | |
| A-1 | See Tab Bills | Drive Gear - Input (see table page 5) | 1 |
| A-2 | 550986 | Bearing - Mainshaft Pocket | 1 |
| Mainshaft Group - Output | | | |
| B-1 | 49-362-1 | Mainshaft | 1 |
| B-2 | 545087 | Pin - Thrust Washer Lock | 2 |
| B-3 | 49-8-3 | Gear - 1st Speed Mainshaft (45T) | 1 |
| B-4 | 550991 | Bearing - 1st Speed Needle | 1 |
| B-5 | 49-47-1 | Washer - 1st & 2nd Speed Thrust | 1 |
| B-6 | 49-381-1 | Snap Ring - 1st & 2nd Thrust Washer | 1 |
| B-7 | 49-8-21 | Gear - 2nd Speed Mainshaft (38T)* | 1 |
| or | 49-8-5 | Gear - 2nd Speed Mainshaft (38T)** | 1 |
| B-8 | 550963 | Bearing - 2nd & Reverse Needle | 2 |
| B-9 | 49-464-1X | Synchronizer - 2nd & 3rd Mainshaft* | 1 |
| or | 313764X | Synchronizer - 2nd & 3rd Mainshaft** | 1 |
| B-10 | 101-466-7 | Gear - 2nd & 3rd Mainshaft Clutch* | 1 |
| or | 101-466-4 | Gear - 2nd & 3rd Mainshaft Clutch** | 1 |
| B-11 | 40-381-4 | Snap Ring - 2nd & 3rd Clutch Gear | 1 |
| B-12 | 49-8-20 | Gear - 3rd Speed Mainshaft (34T)* | 1 |
| or | 49-8-7 | Gear - 3rd Speed Mainshaft (34T)** | 1 |
| B-13 | 550968 | Bearing - 3rd Speed Gear | 1 |
| B-14 | 49-47-2 | Washer - 3rd & 4th Speed Thrust | 1 |
| B-15 | 40-381-3 | Snap Ring - 3rd & 4th Thrust Washer | 1 |
| B-16 | 49-8-18 | Gear - 4th Speed Mainshaft (22T) (for ES53-5A)* | 1 |
| or | 49-8-9 | Gear - 4th Speed Mainshaft (22T) (for ES53-5A)** | 1 |
| or | 49-8-19 | Gear - 4th Speed Mainshaft (21T) (for ES53-5D)* | 1 |
| or | 49-8-11 | Gear - 4th Speed Mainshaft (21T) (for ES53-5D)** | 1 |
| B-17 | 550990 | Bearing - 4th Speed Gear | 1 |
| B-18 | 101-464-1X | Synchronizer - 4th & 5th Mainshaft* | 1 |
| or | 313775X | Synchronizer - 4th & 5th Mainshaft** | 1 |
| B-19 | 49-466-4 | Gear - 4th & 5th Speed Clutch (33T)* | 1 |
| or | 101-466-2 | Gear - 4th & 5th Speed Clutch (33T)** | 1 |
| B-20 | 40-381-1 | Snap Ring - 4th & 5th Speed Clutch Gear | 1 |
| B-21 | 101-465-7 | Clutch Collar - 1st & Rev. | 1 |
| B-22 | 49-8-13 | Gear - Reverse (42T) | 1 |
| B-23 | 101-47-4 | Washer - Reverse Thrust | 1 |
| B-24 | See Tab Bills | Gear - Speedometer Drive | 1 |
| B-25 | See Tab Bills | Companion Flange or End Yoke | 1 |
| B-26 | 53-205-1 | Washer - Mainshaft Nut | 1 |
| B-27 | 501200 | Nut - Mainshaft (1 1/4" - 18) | 1 |

*-Back-Tapered Clutching Teeth Version (After Serial No. J960601000)

** - Straight Clutching Teeth Version (Before Serial No. J960601000)

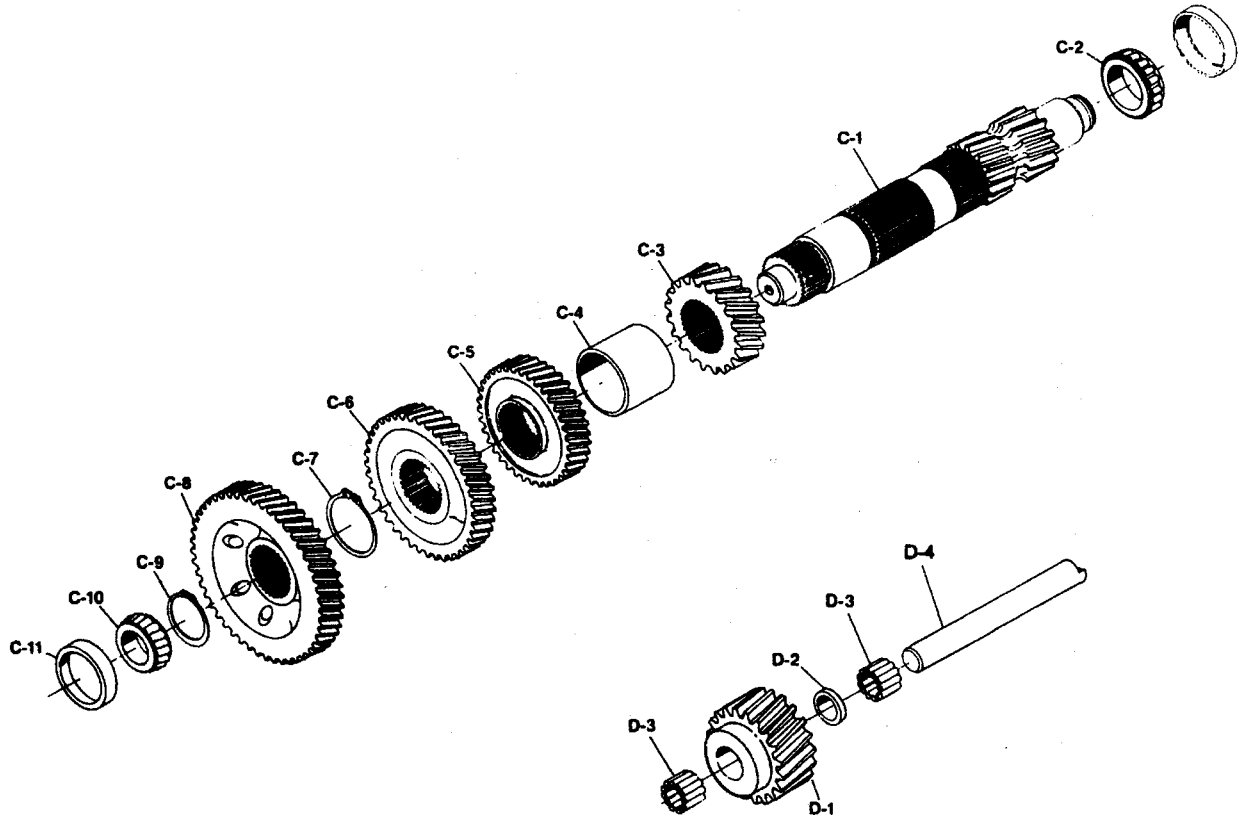
N.S.S. - Not Sold Separately

◀◀◀◀ ◀◀◀◀ ◀◀◀◀ ◀◀◀◀ **IMPORTANT**

MODEL ES53-5

GEARS and RELATED PARTS

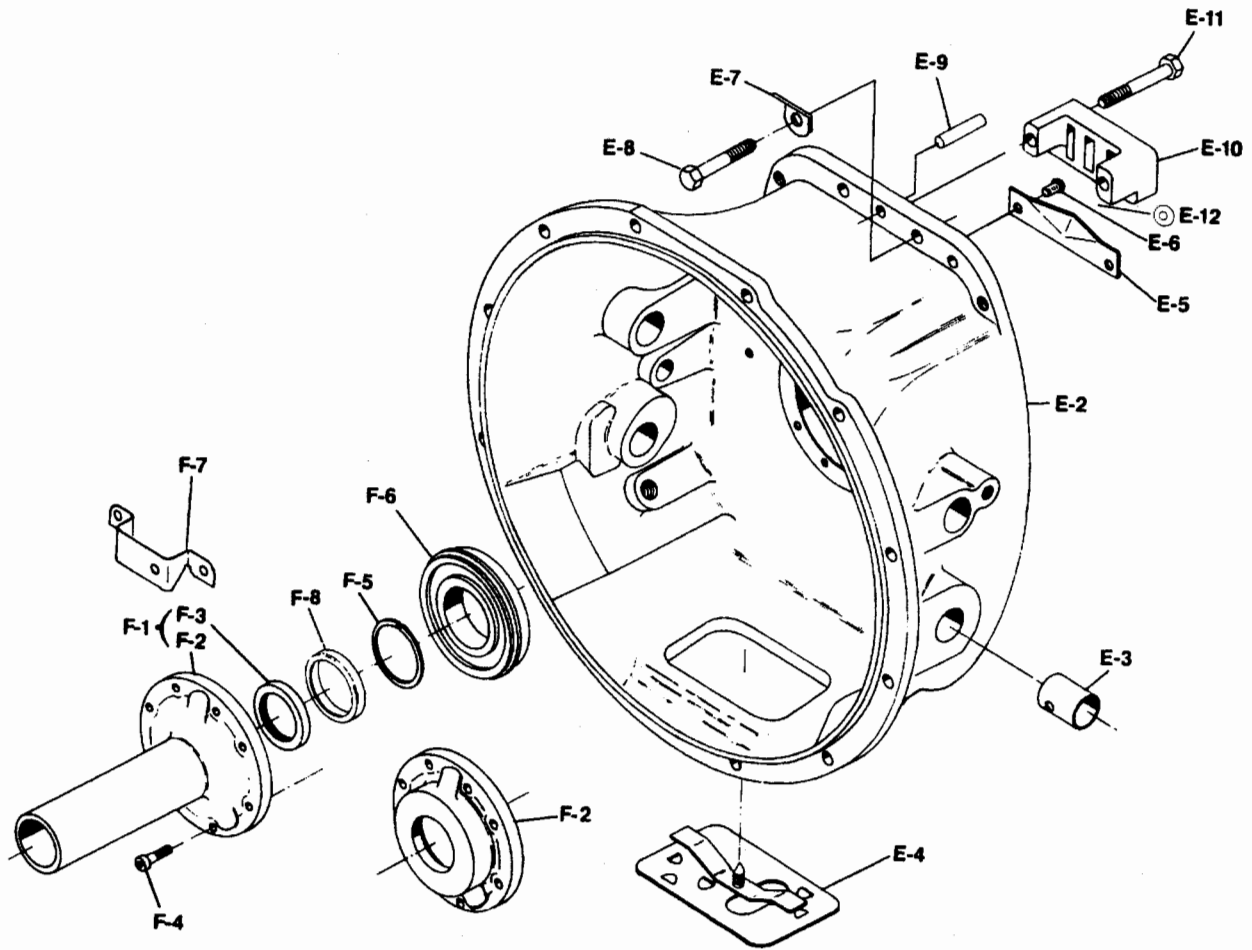
T210-ES53-5



MODEL ES53-5

CLUTCH HOUSING and DRIVE GEAR BEARING CAP GROUP

T210-ES53-5



DRIVE GEAR BEARING CAP CHART

| A | B | C | D | Drive Gear Front Bearing Cap | | |
|---|---------------|--------|--------------------------|------------------------------|-----------------------------------|-----------------------|
| | | | | Casting Number | Brg. Cap Sub-Assembly Part Number | Includes Oil Seal F-3 |
| Outside Diameter | Stem Diameter | Length | Inside Dia. for Oil Seal | | | |
| FLAT TYPE - For Pull Type Clutches Pull Type Release | | | | | | |
| 5 1/8" | - | 1.260" | 2.562" | C40-19-27 | 49-19-10-1X | 40-463-4-1X |
| STEM TYPE - For Push Type Clutches Pull Type Release | | | | | | |
| 5 1/8" | 1.745" | 4.134" | 2 1/16" | C40-19-37 | 49-19-2-1X | 40-463-6-1X |
| 5 1/8" | 1.871" | 4.375" | 2 1/16" | C40-19-37 | 49-19-4-1X | 40-463-6-1X |
| 5 1/8" | 1.940" | 6.260" | 2 1/16" | C40-19-37 | 49-19-6-1X | 40-463-6-1X |
| 5 1/8" | 1.871" | 5.669" | 2 1/16" | C40-19-37 | 49-19-7-1X | 40-463-6-1X |
| 5 1/8" | 1.871" | 6.654" | 2 1/16" | C40-19-37 | 49-19-8-1X | 40-463-6-1X |
| 5 1/8" | 1.871" | 6.654" | 2 1/16" | C40-19-37 | 49-19-9-1X | 40-463-6-1X |
| 5 1/8" | 1.372" | 5.360" | 2 1/16" | C40-19-51 | 49-19-11-1X | 40-463-6-1X |

MODEL ES53-5

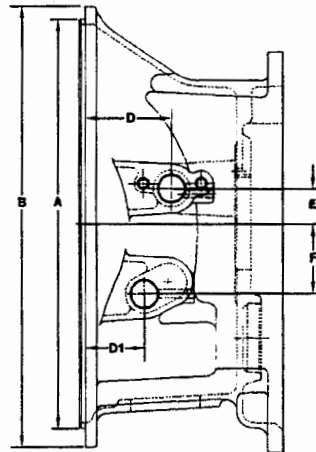
CLUTCH HOUSING and DRIVE GEAR BEARING CAP GROUP

T210-ES53-5

| Ref. No. | Part No. | Description | Qty. |
|---|-------------------------|--|------|
| Clutch Housing | | | |
| E-2 | See Tab Bills N.S.S. | Clutch Housing Assembly (see page 20) | 1 |
| | | Clutch Housing (see dimension table below) | 1 |
| E-3 | 128C-20 | Bushing - Clutch Release Shaft | 2 |
| E-4 | 46-96-2-1X | Hand Hole Cover Assembly | 1 |
| E-5 | 40-468-1 | Oil Trough | 1 |
| E-6 | 545141 | Pin - Drive Oil Trough | 2 |
| E-7 | 330564-1 | Lift Hook | 1 |
| E-8 | 545002-4 | Bolt - Clutch Housing to Case (.375-16 x 1.125) | 16 |
| E-9 | 545086 | Dowel Pin - Case Front | 2 |
| E-10 | 40-477-1 | Support - Front Shift Bar | 1 |
| E-11 | 545002-19 | Bolt - Shift Bar Support (.375-16 x 2.25) | 2 |
| N.S. | 500169-5 | Nipple - Clutch Release Shaft | 2 |
| E-12 | 49-37-10 | Spacer - Front Bar Support | 2 |
| Cap & Seal Assembly (see table page 6) | | | |
| F-1 | See Tab Bills | Cap | 1 |
| F-2 | N.S.S. | Cap | 1 |
| F-3 | 40-463-6-1X | Seal - Drive Gear Bearing Cap (stem only) | 1 |
| or | 40-463-4-1X | Seal - Drive Gear Bearing Cap (flat only) | 1 |
| F-4 | 545163 | Cap Screw - Drive Gear Bearing Cap (.250-20 x 1.00 self-locking) | 8 |
| F-5 | 97-381-30 | Snap Ring - Bearing Drive Gear Front | 1 |
| F-6 | 550988 | Bearing - Drive Front | 1 |
| F-7 | 40-411-1 | Return Spring Bracket (Navistar only) | 1 |
| F-8 | 49-468-2 | Oil Ring | 1 |

N.S.S. - Not Sold Separately

| Size No. | SAE | |
|----------|------------------|---------|
| | A Pilot Diameter | B O.D. |
| 1 | 20 1/8" | 21 3/4" |
| 2 | 17 5/8" | 19 1/4" |
| 3 | 16 1/8" | 17 3/4" |



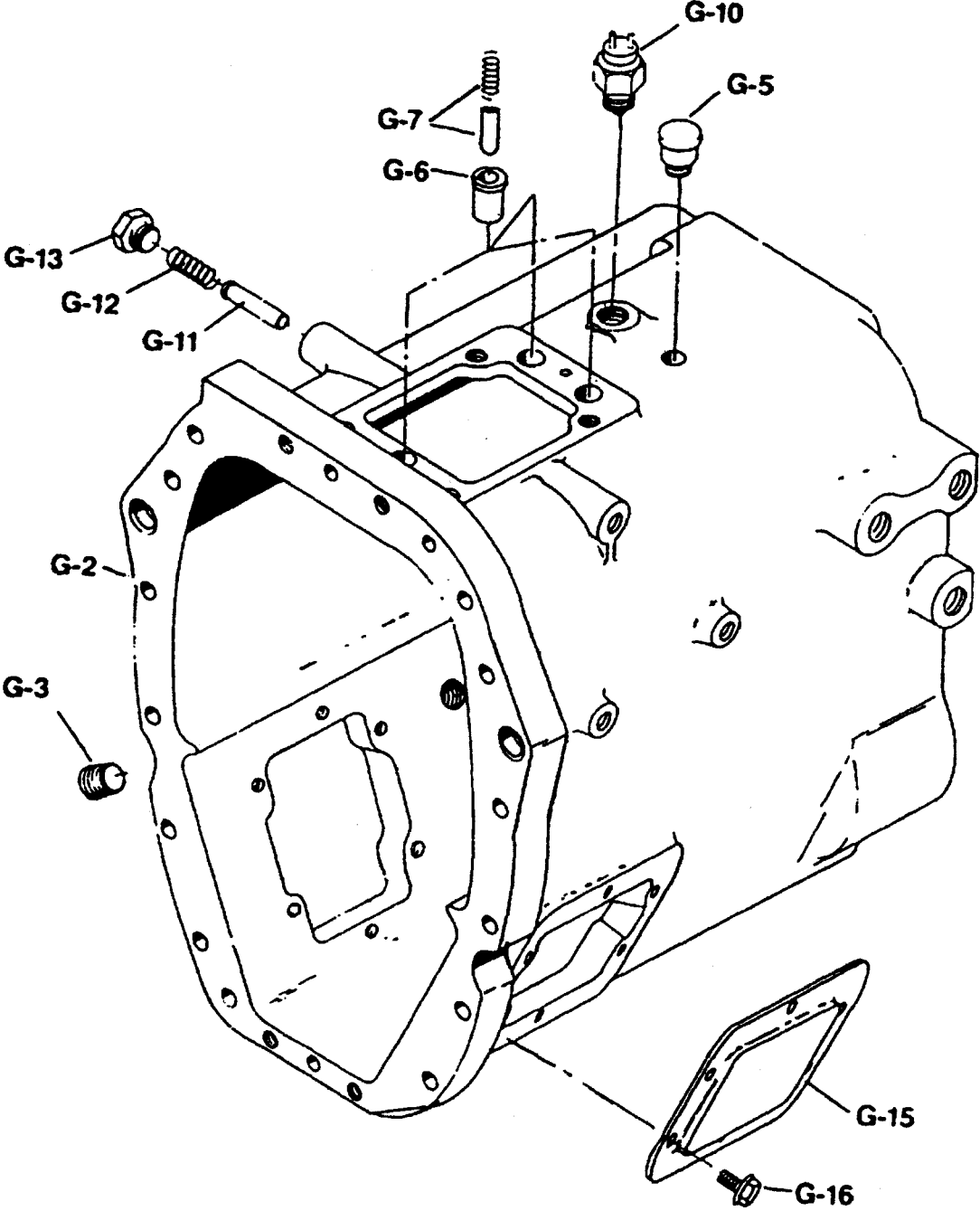
| Assembly No. | Casting No. | CLUTCH HOUSING | | | RELEASE SHAFT HOLE | | | |
|----------------|-------------|----------------|----------|-----------------|--------------------------------|------------------------|---------------------------------|------------------------|
| | | S A E | C Length | Shaft Hole Dia. | D C/L to Front Face Upper Hole | E Above C/L Upper Hole | D1 C/L to Front Face Lower Hole | F Below C/L Lower Hole |
| E-2 | | | | | | | | |
| 49-518-9-2X | C49-518-1 | 2 | 8 35/64" | 1.00" | 3 3/4" | 1 1/2" | 2 9/16" | 3.00" |
| ++49-518-10-2X | C49-518-1 | 2 | 8 35/64" | 1.00" | 3 3/4" | 1 1/2" | 3 19/32" | 2.50" |
| ++49-518-11-2X | C49-518-1 | 2 | 8 35/64" | 1.00" | 3 3/4" | 1 1/2" | 2 9/16" | 3.00" |

++ - Housings Have (2) Tapped Holes Either Side of the Shaft Hole.

MODEL ES53-5

CASE GROUP

T210-ES53-5



EASY SHIFT 5 SPEED MODELS (530 lb-ft) CASE GROUP and RELATED PARTS

T210-ES53-5

| Ref. No. | Part No. | Description | Qty. |
|-------------------|----------------------|--|------|
| Case Group | | | |
| G-1 | See Tab Bills | Case Assembly (includes G-1 thru G-6) | 1 |
| G-2 | N.S.S. | Case (casting number C49-15-7) | 1 |
| N.S. | NP-96 | Name Plate | 1 |
| N.S. | NP-196 | Patent Plate | 1 |
| N.S. | 252-SP | Pin - Name Plate | 4 |
| N.S. | 330934 | Magnet - Ceramic | 1 |
| N.S. | 330800 | Plug - Side Hole ($\frac{3}{8}$ " - 16 x $\frac{3}{4}$ ") | 4 |
| G-3 | 545123 | Plug - Filler/Drain ($\frac{3}{4}$ " - 14 N.P.I.F.) | 2 |
| G-5 | 312268 | Breather | 1 |
| G-6 | 40-487-1 | Insert - Poppet Spring & Plunger | 3 |
| G-7 | 101-438-9-2X | Plunger Assy. (includes 3 springs and 3 poppets) | 1 |
| G-10 | 313538 | Switch - Back-Up Light (Navistar only) | 1 |
| or | 313539 | Switch - Back-Up Light (Ford) | 1 |
| N.S. | 40-263-2 | Sleeve - Back-Up Light (shipping) | 1 |
| G-11 | 40-438-1 | Pin - 1st & Reverse Select Plunger | 1 |
| G-12 | 62-72-8 | Spring - 1st & Reverse Shift Finger Plunger | 1 |
| or | 40-72-3 | Spring - 1st & Reverse Shift Finger Plunger (white) (R.V.I.) | 1 |
| or | 30-72-6 | Spring - 1st & Reverse Shift Finger Plunger | 1 |
| G-13 | 545128 | Plug - 1st & Reverse Plunger | 1 |
| G-15 | 50-267-2 | Cover - PTO Aperture (6 bolt) | 2 |
| N.S. | 545056-6 | Anaerobic Sealant | A/R |
| G-16 | 330800 | Screw - PTO Aperture Cover (.375-16 x .750) | 12 |

*-Back-Tapered Clutching Teeth Version (After Serial No. J960601000)

** - Straight Clutching Teeth Version (Before Serial No. J960601000)

N.S.S. - Not Sold Separately

N.S. - Not Shown

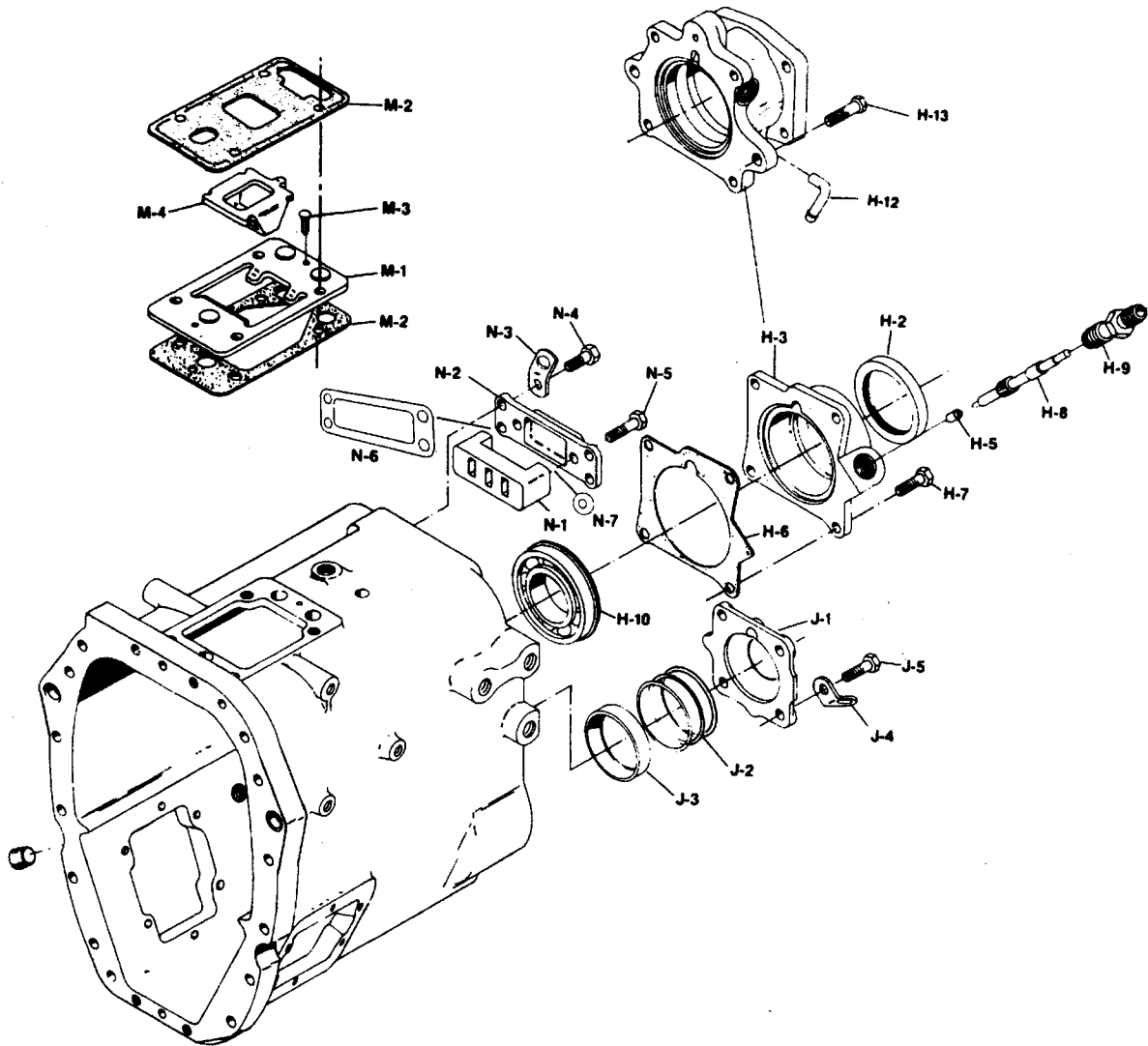
A/R - As Required

◆◆◆◆◆ **IMPORTANT**

MODEL ES53-5

REAR BEARING CAP GROUP and RELATED PARTS

T210-ES53-5



MAINSHAFT REAR BEARING CAP TABLE

| Part Number Includes | | | | | Type & Description | Used By |
|----------------------|-----------------|----------------|---------------------|---------------|---------------------------------|-------------|
| Part Number H-1 | Oil Seal H-2 | Casting Number | Speedo Bush. H-5 | Gasket H-6 | | |
| 40-19-19-2X | 63-463-1 | C40-19-20 | 60-465-1 | 40-223-5 | 12x4 DCM, Mech. Speedo | Navistar |
| 40-19-22-2X | 63-463-1 | C40-19-23 | 60-465-1 | 40-223-5 | 9x3/10x3 Bend. Mech. Speedo | All |
| 40-19-38-2X | 63-463-1 | C40-19-46 | 60-465-1 | 40-223-4 | Air Cap, Mech. Speedo | Ford & Std. |
| 40-19-39-1X | 63-463-1 | C40-19-52 | — | 40-223-4 | Air Cap, Elec/Mech Speedo | Nav. & GM |
| 40-19-41-2X | 63-463-1 | C40-19-44 | — | 40-223-5 | 12x4 Elect. Speedo Only | Navistar |
| 40-19-42-2X | 63-463-1 | C40-19-45 | — | 40-223-5 | 9x3 Elect. Speedo Only | Navistar |
| 40-19-43-2X | 63-463-1 | C40-19-46 | — | 40-223-4 | Air Cap, Elect. Speedo Only | Navistar |
| 40-19-49-2X | 63-463-1 | C40-19-46 | — | 40-223-4 | Air Cap, Elect. Speedo (Metric) | Volvo |

MODEL ES53-5

REAR BEARING CAP GROUP and RELATED PARTS

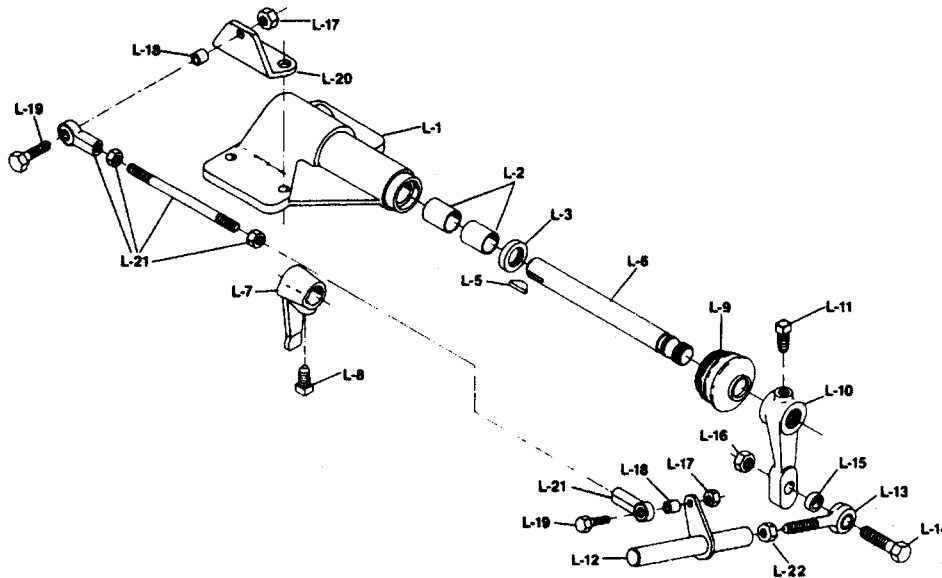
T210-ES53-5

| Ref. No. | Part No. | Description | Qty. |
|--|----------------------|---|------|
| Mainshaft Rear Bearing Cap Group | | | |
| H-1 | See Tab Bills | Cap Assembly - Mainshaft Bearing Rear | 1 |
| H-2 | 63-463-1 | Oil Seal - Mainshaft Rear Bearing Cap | 1 |
| H-3 | See Page 10 | Cap Sub Assembly - Mainshaft rear | 1 |
| H-4 | N.S.S. | Cap - Mainshaft Rear Bearing | 1 |
| H-5 | See Page 10 | Bushing - Speedometer | 1 |
| H-6 | 40-223-4 | Gasket - Mainshaft Rear Bearing Cap | 1 |
| or | 40-223-5 | Gasket - Mainshaft Rear Bearing Cap (brake only) | 1 |
| H-7 | 545002-4 | Bolt - Rear Bearing Cap (.375-16 x 1.125) | 4 |
| H-8 | See Tab Bills | Gear - Speedometer Drive | 1 |
| H-9 | 97-454-2-1X | Sleeve & Oil Seal | 1 |
| N.S. | 44-539-1 | Cap - Speedometer Dust | 1 |
| N.S. | 55-334-1 | Plug - Speedometer (used without driven gear) | 1 |
| N.S. | 545106 | Plug - Speedometer Outlet (electronic) | 1 |
| H-10 | 550989 | Bearing - Mainshaft Rear | 1 |
| N.S. | 545021 | Plug - Electronic Speedometer (Ford) | 1 |
| H-12 | 37179 | Tube - Vent (assembly to front of transmission) | 1 |
| H-13 | 545134 | Bolt - Cap (D.C.M. brake) | 2 |
| or | 545012 | Plug - Case (rear holes) | 2 |
| Countershaft Rear Bearing Cap Group | | | |
| J-1 | 101-22-1 | Cap - Countershaft Rear Bearing | 1 |
| J-2 | 49-228-1-1 | Shim - Countershaft Rear Bearing (.0055/.0045) | 1 |
| or | 49-228-1-2 | Shim - Countershaft Rear Bearing (.0110/.0090) | 1 |
| or | 49-228-1-3 | Shim - Countershaft Rear Bearing (.0165/.0135) | 1 |
| J-3 | 550978 | Cup - Countershaft Rear Bearing | 1 |
| J-4 | 330564-1 | Lift Hook | 1 |
| J-5 | 545002 | Bolt - Countershaft Rear Bearing Cap (.375-16 x 1.00) | 4 |
| Interlock Group | | | |
| M-1 | 40-200-1 | Plate - Interlock Retainer | 1 |
| M-2 | 101-118-1 | Gasket - Case to Interlock Plate (bottom) | 1 |
| and | 101-118-2 | Gasket - Case to Interlock Plate (top) | 1 |
| M-3 | 545091 | Screw - Drive (interlock retainer) | 2 |
| M-4 | 40-200-2 | Plate - Interlock | 1 |
| Rear Shaft Bar Support Group | | | |
| N-1 | 49-477-3 | Support - Rear Shift Bar | 1 |
| N-2 | 40-96-1 | Cap - Rear Shift Bar | 1 |
| N-3 | 330564-1 | Lift - Hook | 1 |
| N-4 | 545002 | Screw - Shift Bar Cap (.375-16 x 1.00) | 4 |
| N-5 | 545002-9 | Screw - Shift Bar Support (.375-16 x 2.250) | 2 |
| N-6 | 49-223-1 | Gasket - Shift Bar Cover | 1 |
| N-7 | 49-37-10 | Spacer - Rear Bar Support | 2 |

N.S.S. - Not Sold Separately
N.S. - Not Shown

MODEL ES53-5 REMOTE CONTROL ASSEMBLY

T210-ES53-5



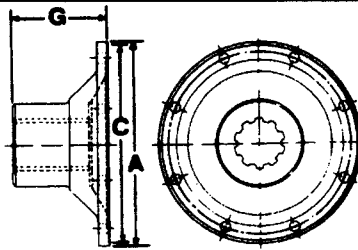
| Ref. No. | Part No. | Description | 40-18-1 | | |
|----------|----------------------|---|---------|-----|-----|
| | | | -2X | -3X | -6X |
| | See Tab Bills | Remote Control Assembly | 1 | 1 | 1 |
| | 40-18-1-1X | Remote Control Cover Assembly | 1 | 1 | 1 |
| L-1 | N.S.S. | Remote Control Cover | 1 | 1 | 1 |
| L-2 | 40-24-1 | Bushing - Remote Control Cover | 2 | 2 | 2 |
| L-3 | 28P-19 | Seal - Remote Control Rod | 1 | 1 | 1 |
| N.S. | 40-65-1-1X | Inner Shifter Shaft, Finger and Key | 1 | 1 | 1 |
| L-5 | 500007-19 | Key - Shift Bracket | 1 | 1 | 1 |
| L-6 | 40-65-1 | Shaft - Remote Control | 1 | 1 | 1 |
| L-7 | 40-6-1 | Finger - Shift | 1 | 1 | 1 |
| L-8 | 545063 | Set Screw - $\frac{7}{8}$ " - 20 x .72 Square Head | 1 | 1 | 1 |
| L-9 | 97-483-3 | Boot - Shift Rod | 1 | 1 | 1 |
| N.S. | LW-3-9 | Lockwire | 2 | 2 | 2 |
| L-10 | 40-6-3 | Control Lever | 1 | - | 1 |
| or | 40-6-5 | Control Lever | - | 1 | - |
| L-11 | 545136 | Set Screw - $\frac{7}{16}$ " - 14 x $\frac{7}{8}$ Square Head | 1 | 1 | 1 |
| L-12 | 40-65-3-1X | Shift Rod | 1 | 1 | - |
| L-13 | 330938 | Rod End | 1 | 1 | - |
| L-14 | 545001-2 | Bolt - Control Lever ($\frac{1}{2}$ " - 13 x 2 $\frac{1}{4}$ " hex head) | 1 | 1 | - |
| L-15 | 40-38-2 | Spacer - Control Lever Bolt | 1 | 1 | - |
| L-16 | 500370-5 | Nut - Control Lever and Rod End ($\frac{1}{2}$ " - 13 hex) | 1 | 1 | - |
| L-17 | 500370-3 | Nut - Tie Rod Assembly Mounting Bolt ($\frac{3}{8}$ " - 16 hex) | 2 | 2 | - |
| L-18 | 40-38-3 | Spacer - Tie Rod Assembly Mounting Bolt | 2 | 2 | - |
| L-19 | 545002-5 | Bolt - Tie Rod Assembly ($\frac{3}{8}$ " - 16 x 1.75 hex hed) | 2 | 2 | - |
| L-20 | 40-354-3 | Bracket - Tie Rod | 1 | 1 | - |
| L-21 | 40-65-2-1X | Tie Rod Assembly | 1 | 1 | - |
| L-22 | 500371-5 | Nut - Control Shift Rod | 1 | 1 | 1 |

N.S.S. - Not Sold Separately
N.S. - Not Shown

MODEL ES53-5

COMPANION FLANGES and END YOKES

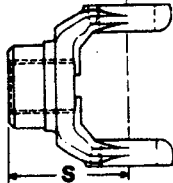
T210-ES53-5



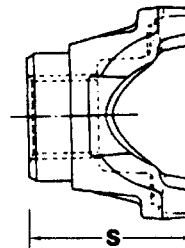
COMPANION FLANGE

Companion Flanges

| Joint Series | A Flange Diameter | Part No. Companion Flange Assembly | Part No. Companion Flange | G End of Hub to Flange Face Length | C Pilot Diameter F-Female M-Male | Brake Size |
|--------------|-------------------------|---|---------------------------------|---|---|-----------------|
| 1480/1550 | Rectangular | — | 53-106-2 | 2 7/8" | F-3 3/4" | 9 x 3 or 12 x 4 |



FULL ROUND



U-BOLT—BRG. STRAP—HALF ROUND

| Series | Yoke Style | End Yoke Part Number | S End of Hub to Center Line Length | Joint Angle | Brake Size |
|--------|--------------|-------------------------|--|-------------|------------|
| 1480 | U-Bolt | 3-4-8781 | 4 11/64" | 22 1/2° | — |
| 1480 | Brg. Strap** | 3-4-8931-2 | 3 29/32" | 23 1/2° | — |
| 1550 | U-Bolt | 4-4-4491 | 4 1/64" | 21 1/2° | — |
| 1550 | Brg. Strap* | 4-4-4491-1 | 4 1/64" | 21 1/2° | — |
| 1550 | Brg. Strap** | 4-4-4491-2 | 4 1/64" | 21 1/2° | — |
| 1550 | U-Bolt | 4-4-4601 | 6 27/64" | 22° | 12 x 4 |
| 1550 | U-Bolt | 4-4-4611 | 4 11/64" | 22 1/2° | — |
| 1550 | Brg. Strap* | 4-4-4611-1 | 4 11/64" | 22 1/2° | — |
| 1550 | Brg. Strap** | 4-4-4611-2 | 4 11/64" | 22 1/2° | — |
| 1550 | Half Rnd. | (A) 4-4-6111-1X | 7 1/32" | 22° | 12 x 4 |
| 1610 | Full Rnd. | 5-4-6321 | 4" | 19° | — |
| 1610 | Half Rnd. | 5-4-6321-1 | 4" | 19° | — |
| 1610 | Full Rnd. | 5-4-6481 | 4 11/64" | 22 1/2° | — |
| 1610 | Half Rnd. | 5-4-6481-1 | 4 11/64" | 22 1/2° | — |
| 1610 | Full Rnd. | 5-4-6491 | 6 21/32" | 22° | 12 x 4 |
| 1610 | Half Rnd. | (A) 5-4-7611-1X | 7 9/16" | 22° | 12 x 4 |
| 1710 | Full Rnd. | 6-4-7301 | 5 1/4" | 33 1/2° | — |
| 1710 | Half Rnd. | 6-4-7301-1 | 5 1/4" | 33 1/2° | — |

(A) Assembly Includes Brake Drum

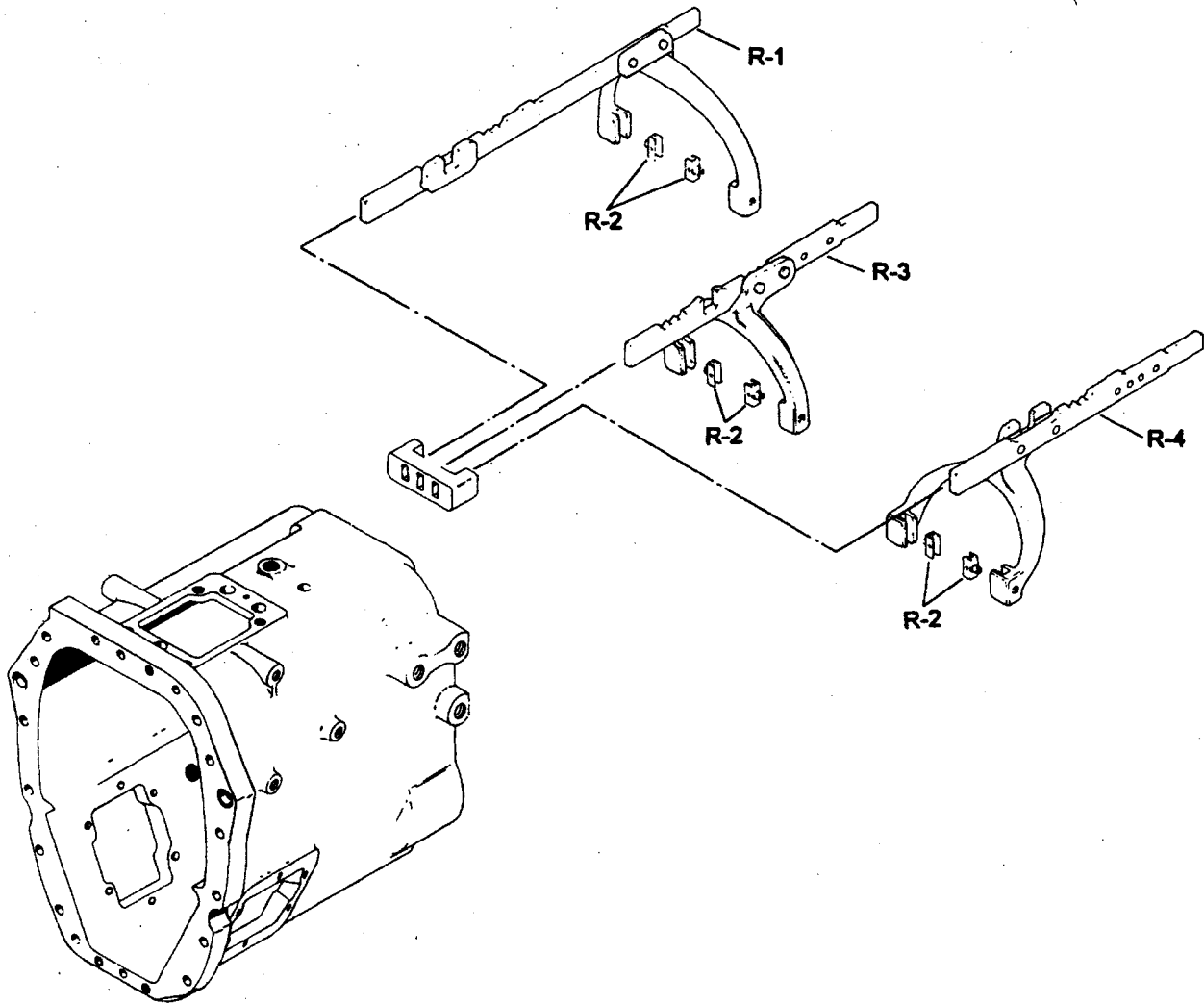
*With Tapped Holes

**With Thru Holes

EASY SHIFT 5 SPEED MODELS (530 lb-ft)

SHIFT BAR and FORK ASSEMBLY

T210-ES53-5



| Ref. No. | Part No. | Description | Qty. |
|----------|--------------|---|------|
| | | Shift Bar and Fork Assembly | |
| R-1 | 313723-1X | Fork and Bar Assembly - 1st and Reverse (includes R-2, 1 poppet plunger, and 1 spring) | 1 |
| R-2 | 101-486-1-1X | Kit - Shift Fork Clip (includes (2) clips) (included in R-1, R-3, and R-4) | 3 |
| R-3 | 49-69-2-1X | Fork and Bar Assembly - 2nd and 3rd* (includes R-2, 1 poppet plunger, and 1 spring) | 1 |
| or | 313760-1X | Fork and Bar Assembly - 2nd and 3rd** (includes R-2, 1 poppet plunger, and 1 spring) | 1 |
| R-4 | 49-69-1-1X | Fork and Bar Assembly - 4th and 5th* (includes R-2, 1 poppet plunger, and 1 spring) | 1 |
| or | 313761-1X | Fork and Bar Assembly - 4th and 5th** (includes R-2, 1 poppet plunger, and 1 spring) | 1 |

*-Back-Tapered Clutching Teeth Version (After Serial No. J960601000)

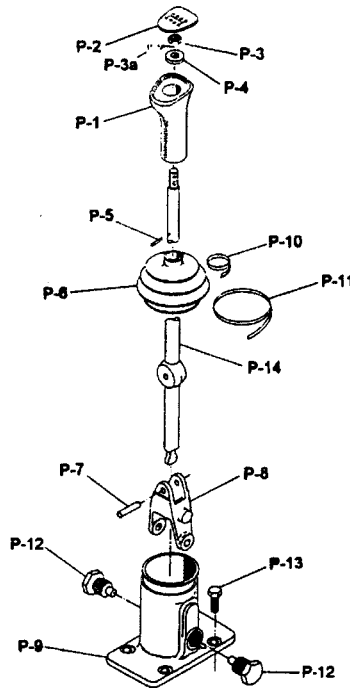
** - Straight Clutching Teeth Version (Before Serial No. J960601000)

◆◆◆◆ ◆◆◆◆ ◆◆◆◆ ◆◆◆◆ **IMPORTANT**

MODEL ES53-5

SHIFT LEVER and DOME ASSEMBLY

T210-ES53-5



| Ref. No. | Part No. | Description | 101-17-2 | |
|----------|---------------------|--|----------|----------|
| | | | -28X | -29X |
| | 313768-2X | Sub-Assembly - Shift Knob (includes P-1 thru P-5) | 1 | 1 |
| P-1 | 39Q-35 | Handle - Shift Lever | 1 | 1 |
| P-2 | 49-20-1 | Insert - Shift Lever Handle (ES43-5 & ES53-5) | 1 | 1 |
| P-2 | 101-20-9 | Insert - Shift Lever Handle (ES52-7 & ES066-7B) | 1 | 1 |
| P-3 | 500370-5 | Nut - Shift Knob Retaining | 1 | 1 |
| P-3a | 500357-13 | Washer - Shift Lever Retaining (lock type) | 1 | 1 |
| P-4 | 204-W | Washer - Shift Knob | 1 | 1 |
| P-5 | 201-438-8 | Pin - Shift Knob | 1 | 1 |
| N.S. | 101-17-2-10X | Sub Assembly - Shift Tower (includes P-6 thru P-13) | 1 | 1 |
| P-6 | 101-483-2 | Boot - Shift Tower and Lever | 1 | 1 |
| P-7 | 53Q-20 | Pin - Pivot (Gimbal) | 1 | 1 |
| P-8 | 48Q-60 | Yoke - Shift (Gimbal) | 1 | 1 |
| P-9 | 101-17-2 | Tower - Shift (Gimbal) | 1 | 1 |
| P-10 | 33Q-15-1 | Tie Cable - Upper | 1 | 1 |
| P-11 | 33Q-15-2 | Tie Cable - Lower | 1 | 1 |
| P-12 | 313591X | Kit - Trunion Screws (includes (2) Trunion screws) | 1 | 1 |
| P-13 | 545028 | Screw - Shift Tower | 4 | 4 |
| P-14 | 25Q-2594-10 | Shift Lever (26.400" long) Straight | 1 | - |
| | 25Q-2594-11 | Shift Lever (30.712" long) Straight | - | 1 |
| | 2851 | Bulletin — Installation Shift Knob | 1 | 1 |
| | | Parts Not Included in Tower Assemblies | | |
| N.S. | 201-483-4 | Boot - Floorboard (oval) | | |
| N.S. | 201-483-5 | Boot - Floorboard (rectangular) | | |
| N.S. | 101-483-13 | Boot - Internal (UPS) | 1 | 1 |

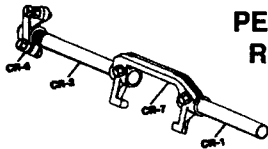
N.S. - Not Shown

N.S.S. - Not Sold Separately

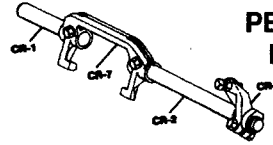
MODEL ES53-5

CLUTCH RELEASE CODE TABLE

T210-ES53-5



**PEDAL ADJUSTING ARM
RIGHT SIDE—310473X**



**PEDAL ADJUSTING ARM
LEFT SIDE—310233X**

CR-1 SHORT SHAFT

| Part No. | Length |
|-----------|--------|
| 106C-1142 | 6.125" |
| 106C-1185 | 5.750" |
| 106C-1216 | 4.750" |
| 106C-1278 | 4.812" |
| 106C-1360 | 5.312" |
| 106C-1375 | 6.781" |
| 106C-1498 | 6.500" |
| 330601-1 | 6.250" |

CR-1 LONG SHAFT (Cont'd)

| Part No. | Type | Length |
|-----------|------|---------|
| 106C-1083 | RS-8 | 7.969" |
| 106C-1094 | RS-8 | 8.469" |
| 106C-1123 | RS-8 | 12.968" |
| 106C-1315 | RS-8 | 7.625" |
| 106C-1367 | RS-8 | 10.312" |
| 106C-1375 | RS-8 | 6.781" |
| 106C-1417 | RS-8 | 7.250" |
| 106C-1422 | RS-8 | 7.500" |
| 106C-1490 | RS-8 | 16.000" |
| 106C-1515 | RS-5 | 11.375" |
| 106C-1529 | RS-5 | 8.312" |
| 330610-5 | RS-8 | 9.469" |
| 330610-11 | RS-8 | 10.750" |
| 46-510-9 | RS-5 | 7.125" |
| 330610-10 | RS-8 | 9.500" |



CR-2 LONG SHAFT

| Part No. | Type | Length |
|-----------|------|---------|
| 106C-438 | RS-5 | 14.000" |
| 106C-617 | RS-8 | 10.469" |
| 106C-839 | RS-8 | 11.469" |
| 106C-939 | RS-8 | 10.000" |
| 106C-953 | RS-8 | 9.750" |
| 106C-959 | RS-8 | 11.968" |
| 106C-960 | RS-8 | 8.719" |
| 106C-1046 | RS-8 | 8.968" |
| 106C-1047 | RS-8 | 9.469" |

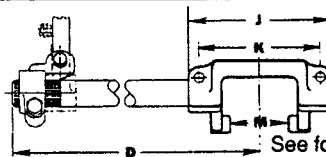
CR-6 PEDAL ADJ. ARM

| | |
|--------------|---------------------|
| 310233X | For Left Side Mtg. |
| 310473X | For Right Side Mtg. |
| 47-526-1-1X* | Lever Type 7 1/4" |
| 310873X* | Lever Type 7 1/4" |

*Lever type can be used on either right or left side.

THRU SHAFT (used with push type clutch)

| Part No. | Type | Length |
|-----------|---------|---------|
| 106C-1566 | Splined | 19.125" |
| 106C-1578 | Splined | 19.500" |
| 49-510-1 | Keyed | 19.120" |
| 97-510-2 | Splined | 19.313" |



See following page for "D" dimensions.

CLUTCH RELEASE YOKES

| CR-7 | Forging No. | Used With | Type | J | K | M |
|-----------------------|-------------|--------------------------|------|--------|--------|--------|
| 105C-64 | F105C64 | Spicer 15 1/2" SP | Pull | 8.000" | 6.500" | 4.895" |
| 105C-68 | F105C99 | Spicer 14" SP | Pull | 7.125" | 5.750" | 4.132" |
| 105C-117 ¹ | F105C118 | Spicer & Others | Push | 8.375" | 7.000" | 4.885" |
| 105C-124■ | F105C125 | Spicer AL & AR | Push | 3.750" | 2.125" | 2.885" |
| 105C-132 ² | F105C118 | Spicer & Others | Push | 8.375" | 7.000" | 4.885" |
| 105C-137 | F105C138 | Spicer 13" and 14" 2P | Pull | 8.000" | 6.500" | 4.895" |
| 85-509-3 ³ | F105C118 | Spicer & Others | Push | 8.375" | 7.000" | 4.885" |

¹Machined washer surface on yoke front

²Machined washer surface on yoke rear (for clearance)

³Same as ¹ above except contains spring holes in lugs

■ Use 7743X Clutch Release Bearing and (2) 230C-12 Springs

★ CLUTCH RELEASE YOKE ATTACHING PARTS—

Use one KEY 10-30, two SCREWS 330231 and two LOCK WASHERS 500356-12

NOTE: When changing from a two plate to single plate clutch or vice versa, a different bearing cap will be required.

MODEL ES53-5

CLUTCH RELEASE CODE TABLE

T210-ES53-5

| Rel.Code See Tab Bill | CR-7 Yoke★ | Shaft | | Adjustable Arm | D Dim. (In.) | Rel. Code See Tab Bill | CR-7 Yoke★ | Shaft | | Adjustable Arm | D Dim. (In.) |
|-----------------------------|---------------|---------------|--------------|-------------------|--------------------|------------------------------|---------------|---------------|--------------|-------------------|--------------------|
| | | CR-1 Short | CR-2 Long | | | | | CR-1 Short | CR-2 Long | | |
| 1 | 105C-64 | 106C-1142 | 106C-1047 | 310233X | 11.969 | 61 | 105C-137 | 106C-1185 | 106C-839 | 310233X | 13.969 |
| 2 | 105C-64 | 106C-1185 | 106C-438 | — | 16.500 | 62 | 105C-137 | 106C-1185 | 106C-939 | 310233X | 12.500 |
| 3 | 105C-64 | 106C-1185 | 106C-939 | 310233X | 12.500 | 63 | 105C-137 | 106C-1185 | 106C-939 | 310473X | 12.500 |
| 4 | 105C-64 | 106C-1185 | 106C-1046 | 310233X | 11.468 | 64 | 105C-137 | 106C-1185 | 106C-953 | 310473X | 12.250 |
| 5 | 105C-64 | 106C-1185 | 106C-1047 | 310233X | 11.969 | 65 | 105C-137 | 106C-1185 | 106C-1046 | 310233X | 11.468 |
| 6 | 105C-64 | 106C-1185 | 106C-1047 | 47-526-1-1X | 11.969 | 66 | 105C-137 | 106C-1185 | 106C-1046 | 310473X | 11.468 |
| 7 | 105C-64 | 106C-1544 | 106C-839 | 310233X | 13.969 | 67 | 105C-137 | 106C-1185 | 106C-1047 | 310233X | 11.969 |
| 8 | 105C-68 | 106C-1142 | 106C-438 | — | 16.125 | 68 | 105C-137 | 106C-1185 | 106C-1083 | 310233X | 10.469 |
| 9 | 105C-68 | 106C-1142 | 106C-617 | — | 12.594 | 69 | 105C-137 | 106C-1185 | 106C-1094 | — | 10.969 |
| 10 | 105C-68 | 106C-1142 | 106C-617 | 310233X | 12.594 | 70 | 105C-137 | 106C-1185 | 106C-1094 | 310233X | 10.969 |
| 11 | 105C-68 | 106C-1142 | 106C-839 | 310233X | 13.594 | 71 | 105C-137 | 106C-1185 | 106C-1123 | — | 15.468 |
| 12 | 105C-68 | 106C-1142 | 106C-939 | 310233X | 12.125 | 72 | 105C-137 | 106C-1185 | 106C-1123 | 310233X | 15.468 |
| 13 | 105C-68 | 106C-1142 | 106C-1046 | 310233X | 11.093 | 73 | 105C-137 | 106C-1185 | 106C-1367 | — | 12.812 |
| 14 | 105C-68 | 106C-1142 | 106C-1047 | 310233X | 11.594 | 74 | 105C-137 | 106C-1185 | 106C-1367 | 310233X | 12.812 |
| 15 | 105C-68 | 106C-1278 | 106C-438 | — | 16.125 | 75 | 105C-137 | 106C-1185 | 106C-1375 | 310873X | 9.281 |
| 15A | 105C-68 | 106C-1278 | 106C-939 | 310473X | 12.125 | 76 | 105C-137 | 106C-1185 | 106C-1515 | — | 13.875 |
| 15B | 105C-68 | 106C-1278 | 106C-939 | 310233X | 12.125 | 77 | 105C-137 | 106C-1185 | 106C-1529 | — | 10.812 |
| 18 | 105C-117 | 106C-1142 | 106C-939 | 310233X | 12.750 | 78 | 105C-137 | 106C-1185 | 330610-5 | — | 11.969 |
| 19 | 105C-117 | 106C-1185 | 106C-438 | — | 16.750 | 78A | 105C-137 | 106C-1185 | 46-510-9 | — | 9.625 |
| 20 | 105C-117 | 106C-1185 | 106C-617 | 310233X | 13.219 | 79 | 105C-137 | 106C-1216 | 106C-617 | 310233X | 12.969 |
| 21 | 105C-117 | 106C-1185 | 106C-839 | 47-526-1-1X | 14.219 | 80 | 105C-137 | 106C-1278 | 106C-438 | — | 16.500 |
| 22 | 105C-117 | 106C-1185 | 106C-939 | 310233X | 12.750 | 83 | 105C-137 | 106C-1278 | 106C-617 | 310233X | 12.969 |
| 23 | 105C-117 | 106C-1185 | 106C-953 | 310873X | 12.500 | 84 | 105C-137 | 106C-1278 | 106C-939 | 310233X | 12.500 |
| 24 | 105C-117 | 106C-1185 | 106C-960 | 310233X | 11.469 | 84A | 105C-137 | 106C-1278 | 106C-939 | 310473X | 12.500 |
| 25 | 105C-117 | 106C-1185 | 106C-1046 | 310233X | 11.718 | 85 | 105C-137 | 106C-1278 | 106C-939 | 310873X | 12.500 |
| 26 | 105C-117 | 106C-1185 | 106C-1047 | 310233X | 12.219 | 86 | 105C-137 | 106C-1278 | 106C-960 | 310233X | 11.219 |
| 27 | 105C-117 | 106C-1185 | 106C-1083 | — | 10.719 | 87 | 105C-137 | 106C-1278 | 106C-1046 | — | 11.468 |
| 28 | 105C-117 | 106C-1185 | 106C-1083 | 310233X | 10.719 | 88 | 105C-137 | 106C-1278 | 106C-1046 | 310233X | 11.468 |
| 29 | 105C-117 | 106C-1185 | 106C-1083 | 310473X | 10.719 | 89 | 105C-137 | 106C-1278 | 106C-1047 | — | 11.969 |
| 30 | 105C-117 | 106C-1185 | 106C-1094 | 310233X | 11.219 | 90 | 105C-137 | 106C-1278 | 106C-1047 | 310233X | 11.969 |
| 31 | 105C-117 | 106C-1185 | 106C-1094 | 310873X | 11.219 | 91 | 105C-137 | 106C-1278 | 106C-1083 | 310233X | 10.469 |
| 32 | 105C-117 | 106C-1185 | 106C-1169 | 310233X | 11.875 | 91A | 105C-137 | 106C-1278 | 106C-1083 | 310473X | 10.469 |
| 33 | 105C-117 | 106C-1185 | 106C-1315 | — | 10.375 | 92 | 105C-137 | 106C-1278 | 106C-1094 | 310233X | 10.969 |
| 34 | 105C-117 | 106C-1185 | 106C-1315 | 310233X | 10.375 | 92A | 105C-137 | 106C-1278 | 106C-1315 | 310233X | 10.125 |
| 35 | 105C-117 | 106C-1185 | 106C-1315 | 47-526-1-1X | 10.375 | 93 | 105C-137 | 106C-1278 | 106C-1375 | 310233X | 9.281 |
| 35A | 105C-117 | 106C-1185 | 106C-1375 | 310873X | 9.531 | 94 | 105C-137 | 106C-1278 | 106C-1422 | 310233X | 10.000 |
| 36 | 105C-117 | 106C-1185 | 106C-1417 | 310233X | 10.000 | 95 | 105C-137 | 106C-1278 | 106C-1529 | — | 10.812 |
| 37 | 105C-117 | 106C-1185 | 106C-1417 | 310873X | 10.000 | 96 | 105C-137 | 106C-1360 | 106C-1083 | — | 10.469 |
| 38 | 105C-117 | 106C-1185 | 106C-1490 | 310233X | 18.750 | 96A | 105C-137 | 106C-1360 | 106C-1417 | 310233X | 9.750 |
| 39 | 105C-117 | 106C-1278 | 106C-939 | 310233X | 12.750 | 97 | 105C-137 | 106C-1360 | 106C-1422 | 310233X | 10.000 |
| 40 | 105C-117 | 106C-1278 | 106C-960 | 310873X | 11.469 | 98 | 105C-137 | 106C-1375 | 106C-438 | 310233X | 16.500 |
| 41 | 105C-117 | 106C-1278 | 106C-1047 | 310233X | 12.219 | 99 | 105C-137 | 106C-1498 | 106C-438 | — | 16.500 |
| 42 | 105C-117 | 106C-1278 | 106C-1094 | 310233X | 11.219 | 100 | 105C-137 | 106C-1498 | 106C-617 | 310233X | 12.969 |
| 43 | 105C-117 | 106C-1278 | 106C-1315 | 310233X | 10.375 | 101 | 105C-137 | 106C-1498 | 106C-617 | 310473X | 12.969 |
| 44 | 105C-117 | 106C-1278 | 106C-1367 | 310233X | 13.062 | 102 | 105C-137 | 106C-1498 | 106C-939 | 310233X | 12.500 |
| 45 | 105C-117 | 106C-1360 | 106C-1083 | 310233X | 10.719 | 103 | 105C-137 | 106C-1498 | 106C-939 | 310473X | 12.500 |
| 46 | 105C-117 | 106C-1360 | 106C-1315 | 310233X | 10.375 | 104 | 105C-137 | 106C-1498 | 106C-953 | 310233X | 12.250 |
| 46A | 105C-117 | 106C-1360 | 330610-10 | — | 12.250 | 105 | 105C-137 | 106C-1498 | 106C-959 | 310233X | 14.468 |
| 49 | 105C-124■ | 106C-1185 | 106C-438 | — | 14.313 | 106 | 105C-137 | 106C-1498 | 106C-1046 | 310233X | 11.468 |
| 50 | 105C-124■ | Thru Shaft | 106C-1566 | 310233X | — | 107 | 105C-137 | 106C-1498 | 106C-1047 | — | 11.969 |
| 51 | 105C-124■ | Thru Shaft | 106C-1566 | 310473X | — | 108 | 105C-137 | 106C-1498 | 106C-1047 | 310233X | 11.969 |
| 52 | 105C-124■ | Thru Shaft | 106C-1566 | 310873X | — | 109 | 105C-137 | 106C-1498 | 106C-1083 | 310233X | 10.469 |
| 52A | 105C-124■ | Thru Shaft | 49-510-1 | 310233X | — | 110 | 105C-137 | 106C-1498 | 106C-1094 | — | 10.969 |
| 53 | 105C-132 | 106C-1185 | 106C-1047 | 310233X | 9.782 | 112 | 105C-137 | 330601-1 | 106C-939 | 310233X | 12.500 |
| 54 | 105C-132 | 106C-1185 | 106C-1083 | 310233X | 8.282 | 112A | 85-509-3 | 106C-1278 | 106C-939 | 310233X | 12.750 |
| 55 | 105C-132 | 106C-1185 | 106C-1417 | 310873X | 7.563 | 113 | 85-509-3 | 106C-1360 | 106C-1417 | 310233X | 10.000 |
| 56 | 105C-132 | 106C-1185 | 49-510-9 | — | 7.438 | 114 | 85-509-3 | Thru Shaft | 106C-1578 | 310233X | — |
| 57 | 105C-132 | 106C-1278 | 46-510-9 | — | 7.438 | 114A | 85-509-3 | Thru Shaft | 106C-1578 | 310473X | — |
| 59 | 105C-137 | 106C-1185 | 106C-438 | — | 16.500 | 115 | 85-509-3 | Thru Shaft | 106C-1578 | 310873X | — |
| 60 | 105C-137 | 106C-1185 | 106C-617 | 310233X | 12.969 | 116 | 312916 | Thru Shaft | 97-510-2 | — | — |

■ Use 7743X Clutch Release Bearing and (2) 230C-12 Springs

MODEL ES53-5 OVERHAUL KITS

T210-ES53-5

| Part No. | Description | Qty. |
|-------------|---|------|
| | Major Overhaul Kit | |
| 49-400-2X | Major Overhaul Kit | 1 |
| 501200 | Nut - Mainshaft Output | 1 |
| 53-205-1 | Washer - Mainshaft Nut | 1 |
| 313401-34X | Thrust Washer Kit | 1 |
| 313429-26X | Shifter Housing Small Parts Kit | 1 |
| 313432-46X | Minor Overhaul Kit | 1 |
| | Minor Overhaul Kit (included in major overhaul kit) | |
| 313432-46X | Minor Overhaul Kit | 1 |
| | Bearings | |
| 550986 | Mainshaft Pocket | 1 |
| 550989 | Mainshaft Rear Cone | 1 |
| 550988 | Drive Gear Front | 1 |
| 550963 | Mainshaft 2nd & Reverse | 2 |
| 550886 | Reverse Idler Gear | 2 |
| 550964 | Countershaft Front - Cone | 2 |
| 550965 | Countershaft Front - Cup | 1 |
| 550868 | Countershaft Rear - Cone | 1 |
| 550978 | Countershaft Rear - Cup | 1 |
| 550968 | Mainshaft 3rd Needle | 1 |
| 550991 | Mainshaft 1st Speed | 1 |
| 550990 | Mainshaft 4th Speed | 1 |
| 101-486-1 | Clip - Shift Fork | 6 |
| 40-463-4-1X | Seal - Drive Gear (flat type) | 1 |
| 40-463-6-1X | Seal - Drive Gear (stem type) | 1 |
| 63-463-1 | Seal - Mainshaft Rear | 1 |
| 545077 | #2 Moly Grease (packet) | 1 |
| 545080-1 | Loctite - Threadlock Adhesive (vial) | 1 |
| 312475-47X | Gasket Kit | 1 |
| 313438-3X | Shim Kit - Countershaft Rear | 1 |
| 313024-17X | Snap Ring - Kit | 1 |
| | Service Manual | 1 |
| 2770 | Bulletin - Bearing Lube Instruction | 1 |
| 2783 | Bulletin - Loctite Application for Mainshaft Nut | 1 |
| | Thrust Washer Kit (included in major overhaul kit) | |
| 313401-34X | Thrust Washer Kit (included in major overhaul kit) | 1 |
| 49-47-2 | Mainshaft - 3rd & 4th Speed | 1 |
| 49-47-1 | Mainshaft - 1st & 2nd Speed | 1 |
| 101-47-4 | Mainshaft - Reverse | 1 |
| 545087 | Pin - Lock | 2 |
| | Shifter Housing Small Parts (included in major overhaul kit) | |
| 313429-26X | Shifter Housing Small Parts (included in major overhaul kit) | 1 |
| 2823 | Bulletin - Shift Bar Assembly & Poppet Plunger | 1 |
| 101-438-9 | Plunger - Poppet | 3 |
| 40-487-1 | Insert - Poppet Spring and Ball | 3 |
| 40-438-1 | Pin - 1st and Reverse Select Plunger | 1 |
| 101-72-7 | Spring - Shift Bar Poppet | 3 |
| 30-72-6 | Spring - 1st & Reverse Shift Finger Plunger | 1 |

MODEL ES53-5 OVERHAUL KITS

T210-ES53-5

| Part No. | Description | Qty. |
|--------------------|---|----------|
| 312475-47X | Gasket Kit (included in minor overhaul kit) | 1 |
| 40-223-4 | Mainshaft Rear Bearing Cap | 1 |
| 40-223-5 | Mainshaft Rear Bearing Cap (D.C.M. brake) | 1 |
| 101-118-1 | Tower | 1 |
| 101-118-2 | Tower | 1 |
| 545056-10 | Anaerobic Sealant | 1 |
| 49-223-1 | Gasket - Shift Bar Cover | 1 |
| 2792 | Bulletin - Liquid Gasket | 1 |
| 313024-17X | Snap Ring Kit (included in minor overhaul kit) | 1 |
| 40-381-3 | Mainshaft 3rd & 4th Thrust Washer | 1 |
| 40-381-3 | Countershaft Head End Gear | 1 |
| 40-381-4 | Mainshaft 2nd & 3rd Clutch Gear | 1 |
| 49-381-1 | Mainshaft 1st & 2nd Speed Thrust Washer | 1 |
| 27-381-5 | Countershaft 4th Gear | 1 |
| 97-381-30 | Mainshaft Front Bearing | 1 |
| 40-381-1 | 4th & 5th Gear | 1 |
| 313438-3X | Shim Kit (included in minor overhaul kit) | 1 |
| 49-228-1-3 | Countershaft Rear Bearing Cap (.0165/.0135) | 1 |
| 49-228-1-2 | Countershaft Rear Bearing Cap (.0110/.0090) | 1 |
| 49-228-1-1 | Countershaft Rear Bearing Cap (.055/.0045) | 1 |
| 2793 | Bulletin - Countershaft Shim Kit | 1 |
| 40-463-4-1X | Breakdown of Oil Seals in the Minor Overhaul Kit | |
| | Sub Assembly - Oil Seal & Installation Sleeve (flat cap) | 1 |
| 40-463-4 | Seal - Drive Gear Bearing Cap | 1 |
| 40-204-1 | Sleeve - Oil Seal Installation (1.75 diameter shaft) | 1 |
| 40-204-2 | Sleeve - Oil Seal Installation (1.50 diameter shaft) | 1 |
| 2819 | Bulletin - Oil Seal Installation Instruction | 1 |
| 40-463-6-1X | Sub Assembly - Oil Seal & Installation Sleeve (stem cap) | 1 |
| 40-463-6 | Seal - Drive Gear Bearing Cap | 1 |
| 40-204-2 | Sleeve - Oil Seal Installation (1.500 diameter shaft) | 1 |
| 40-204-3 | Sleeve - Oil Seal Installation (1.375 diameter shaft) | 1 |
| 2819 | Bulletin - Oil Seal Installation | 1 |

THE ANAEROBIC SEALANT SHOULD BE APPLIED AS FOLLOWS:

- Approx. (4)cc for C/S Bearing Caps
- Approx. (4)cc for Rear Shift Bar Support
- Approx. (6)cc for Drive Gear Bearing Cap.

A 50cc tube is supplied in the Minor Overhaul Kit

MODEL ES53-5

TABULATED BILLS OF MATERIAL

T210-ES53-5

| Tab No. | Used By | For Use With Clutch | CLUTCH HOUSING | | | Main Drive Gear | Drive Gear Bearing Cap F-1 | Case Assembly G-1 |
|----------------------|---------------------|---------------------|----------------|---------------------|--------------------|-----------------|----------------------------|-------------------|
| | | | S A E | Assembly No. E-1 | Rel. Code Pages | | | |
| Model ES53-5A | | | | | | | | |
| 301631 | | | | | | | | |
| **-1 | Navistar | Pull Type | 2 | 49-518-9-1X | - | 49-35-21-1X | 49-19-10-1X | 49-15-6-1X |
| -2 | Navistar | Push Type | 2 | 49-518-9-1X | - | 49-35-17-1X | 49-19-9-1X | 49-15-6-1X |
| -3 | Navistar | Push Type | 2 | 49-518-9-1X | - | 49-35-17-1X | 49-19-9-1X | 49-15-6-1X |
| ** -4 | Navistar | Pull Type | 2 | 49-518-9-1X | - | 49-35-21-1X | 49-19-10-1X | 49-15-6-1X |
| -5 | Navistar | Push Type | 2 | 49-518-9-1X | - | 49-35-17-1X | 49-19-9-1X | 49-15-6-1X |
| -6 | Navistar | Push Type | 2 | 46-518-9-1X | - | 49-35-17-1X | 49-19-9-1X | 49-15-6-1X |
| -7 | Navistar | Pull Type | 2 | 49-518-9-1X | - | 49-35-21-1X | 49-19-10-1X | 49-15-6-1X |
| -8 | Volvo GM | Pull Type | 2 | 49-518-11-1X | - | 49-35-21-1X | 49-19-10-1X | 49-15-6-1X |
| -9 | Najico Spicer Japan | Push Type | 2 | 49-518-9-1X | - | 49-35-17-1X | 49-19-9-1X | 49-15-6-1X |
| -10 | Western Mfg. | Pull Type | 2 | 49-518-11-1X | 62 | 49-35-21-1X | 49-19-10-1X | 49-15-6-1X |
| -11 | Navistar | Pull Type | 2 | 49-518-9-1X | - | 49-35-21-1X | 49-19-10-1X | 49-15-6-1X |
| -12 | Cummins | Push | 2 | 46-518-10-1X | 50 | 49-35-17-1X | 49-19-8-1X | 49-15-6-1X |
| -13 | Navistar | Push Type | 2 | 49-518-9-1X | - | 49-35-21-1X | 49-19-9-1X | 49-15-6-1X |
| -14 | TSP | Pull Type | 2 | 49-518-9-1X | - | 49-35-21-1X | 49-19-10-1X | 49-15-6-1X |
| -15 | TSP | Pull Type | 2 | 49-518-9-1X | - | 49-35-17-1X | 49-19-10-1X | 49-15-6-1X |
| -16 | GMC | Push Type | 2 | 49-518-9-1X | - | 49-35-23-1X | 49-19-9-1X | 49-15-6-1X |
| -17 | Navistar | Push Type | 2 | 49-518-9-1X | - | 49-35-23-1X | 49-19-9-1X | 49-15-6-1X |
| -18 | Navistar | Push Type | 2 | 49-518-9-1X | - | 49-35-23-1X | 49-19-9-1X | 49-15-6-1X |
| -19 | Navistar | Push Type | 2 | 49-518-9-1X | - | 49-35-23-1X | 49-19-9-1X | 49-15-6-1X |
| -20 | Navistar | Pull Type | 2 | 49-518-9-1X | - | 49-35-20-1X | 49-19-10-1X | 49-15-6-1X |
| -21 | Navistar | Pull Type | 2 | 49-518-9-1X | - | 49-35-20-1X | 49-19-10-1X | 49-15-6-1X |
| -22 | Navistar | Pull Type | 2 | 49-518-9-1X | - | 49-35-20-1X | 49-19-10-1X | 49-15-6-1X |
| -23 | OshKosh | Push Type | 2 | 49-518-11-1X | - | 49-35-17-1X | 49-19-8-1X | 49-15-6-1X |
| -24 | Navistar | Pull Type | 2 | 49-518-9-1X | - | 49-35-21-1X | 49-19-10-1X | 49-15-6-1X |
| -25 | Navistar | Pull Type | 2 | 49-518-9-1X | - | 49-35-21-1X | 49-19-10-1X | 49-15-6-1X |
| -26 | Navistar | Push Type | 2 | 49-518-9-1X | - | 49-35-17-1X | 49-19-9-1X | 49-15-6-1X |
| -27 | Navistar | Pull Type | 2 | 49-518-9-1X | - | 49-35-21-1X | 49-19-10-1X | 49-15-6-1X |
| -28 | Navistar | Pull Type | 2 | 49-518-9-1X | - | 49-35-21-1X | 49-19-10-1X | 49-15-6-1X |
| -29 | Ford | Pull Type | 2 | 49-518-10-1X | - | 49-35-20-1X | 49-19-10-1X | 49-15-6-1X |
| -30 | Spartan | Pull Type | 2 | 49-518-9-1X | 63 | 49-35-20-1X | 49-19-10-1X | 49-15-6-1X |
| -31 | Navistar | Pull Type | 2 | 49-518-9-1X | - | 49-35-20-1X | 49-19-10-1X | 49-15-6-1X |
| -32 | Navistar | Push Type | 2 | 49-518-9-1X | - | 49-35-23-1X | 49-19-9-1X | 49-15-6-1X |
| -33 | Ford | Pull Type | 2 | 46-518-10-1X | - | 49-35-20-1X | 49-19-10-1X | 49-15-6-1X |
| -34 | OshKosh | Push Type | 2 | 46-518-11-1X | - | 49-35-17-1X | 49-19-8-1X | 49-15-6-1X |
| -35 | DPD | Pull Type | 2 | 49-518-9-1X | - | 49-35-20-1X | 49-19-10-1X | 49-15-6-1X |
| -36 | Freightliner | Pull Type | 2 | 49-518-10-1X | - | 49-35-17-1X | 49-19-14-1X | 49-15-6-1X |
| -37 | Volvo | Pull Type | 2 | 46-518-11-1X | - | 49-35-21-1X | 49-19-10-1X | 49-15-6-1X |
| -38 | HICO | Push Type | 2 | 49-518-9-1X | 34 | 49-35-17-1X | 49-19-8-1X | 49-15-6-1X |
| -39 | Freightliner | Push Type | 2 | 49-518-10-1X | - | 49-35-17-1X | 49-19-14-1X | 49-15-6-1X |
| -40 | Freightliner | Pull Type | 2 | 46-518-10-1X | - | 49-35-21-1X | 49-19-10-1X | 49-15-6-1X |
| -41 | Freightliner | Pull Type | 2 | 49-518-10-1X | - | 49-35-21-1X | 49-19-10-1X | 49-15-6-1X |
| -60 | Ford | Pull Type | - | - | - | - | 49-19-10-1X | - |

*-Unit Has a 313539 Back-Up Light Switch

** -Unit Has a Countershaft Provision

MODEL ES53-5

TABULATED BILLS OF MATERIAL

T210-ES53-5

| Tab No. | Mainshaft Rear Brg. Cap Assembly H-1 | Speedometer | | End Yoke or Companion Flange | Shifter | | |
|----------------------|--------------------------------------|--------------------------------|-----------------|------------------------------|------------------|-----------------------------|----------------------|
| | | Drive Gear or Signal Gear B-24 | Driven Gear H-7 | | Housing Assembly | Lever & Dome Assembly Pages | Remote Control Pages |
| Model ES53-5A | | | | | | | |
| 301631 | | | | | | | |
| -1 | 40-19-41-2X | 53-452-5 | - | - | - | - | - |
| -2 | 40-19-43-2X | 53-452-5 | - | - | - | - | - |
| -3 | 40-19-41-2X | 53-452-5 | - | - | - | - | - |
| -4 | 40-19-43-2X | 53-452-5 | - | - | - | - | - |
| -5 | 40-19-19-2X | 53-452-3 | - | - | - | - | - |
| -6 | 40-19-43-2X | 53-452-5 | - | - | - | - | - |
| -7 | 40-19-43-2X | 53-452-5 | - | - | - | - | - |
| -8 | 40-19-49-2X | 53-452-7 | - | - | - | - | 40-18-1-8X |
| -9 | 40-19-38-2X | 53-452-4 | 53-453-2 | 5-4-6321-1 | - | - | 40-18-1-2X |
| -10 | 40-19-38-2X | 53-452-4 | 53-453-2 | 3-4-8781 | - | 40-17-1-2X | - |
| -11 | 40-19-38-2X | 53-452-4 | - | - | - | - | - |
| -12 | 40-19-38-2X | 53-452-3 | 62-453-4 | - | - | 101-17-2-69X | - |
| -13 | 40-19-42-2X | 53-452-5 | - | - | - | - | - |
| -14 | 40-19-43-2X | 53-452-5 | - | 6-4-7301 | - | 40-17-1-41X | - |
| -15 | 40-19-43-2X | 53-452-5 | - | 6-4-7301 | - | - | 40-18-1-13X |
| -16 | 40-19-22-2X | 53-452-3 | 62-453-4 | 4-1-6051X | - | 101-17-2-63X | - |
| -17 | 40-19-43-2X | 53-452-5 | - | - | - | - | - |
| -18 | 40-19-41-2X | 53-452-5 | - | - | - | - | - |
| -19 | 40-19-43-2X | 53-452-5 | - | - | - | - | - |
| -20 | 40-19-43-2X | 53-452-5 | - | - | - | - | - |
| -21 | 40-19-43-2X | 53-452-5 | - | - | - | - | - |
| -22 | 40-19-41-2X | 53-452-5 | - | - | - | - | - |
| -23 | 40-19-22-2X | 53-452-3 | 62-453-5 | 4-1-6051X | - | - | - |
| -24 | 40-19-19-2X | 53-452-3 | - | - | - | - | - |
| -25 | 201-37-7 | 53-452-5 | - | - | - | - | - |
| -26 | 201-37-7 | 53-452-5 | - | - | - | - | - |
| -27 | 40-19-42-2X | 53-452-5 | - | - | - | - | - |
| -28 | 40-19-22-2X | 53-452-5 | - | - | - | - | - |
| -29 | 40-19-39-2X | 53-452-6 | - | 5-4-6481 | - | - | - |
| -30 | 40-19-43-2X | 53-452-5 | - | 4-4-4491 | - | - | 40-18-1-2X |
| -31 | 201-37-7 | 53-452-5 | - | - | - | - | - |
| -32 | 201-37-7 | 53-452-5 | - | - | - | - | - |
| -33 | 40-19-39-2X | 53-452-6 | - | 90-4-391-1 | - | - | - |
| -34 | 40-19-22-2X | 53-452-3 | 62-453-5 | 4-1-6051X | - | - | - |
| -35 | 40-19-38-2X | 53-452-4 | 53-453-2 | 4-4-4491-1 | - | - | 40-18-1-2X |
| -36 | 40-19-22-2X | 53-452-3 | 62-453-5 | 4-1-6051X | - | - | - |
| -37 | 40-19-43-2X | 53-452-5 | - | - | - | - | 40-18-1-2X |
| -38 | 40-19-38-2X | 53-37-1 | - | 53-106-2 | - | - | 40-18-1-2X |
| -39 | 40-19-42-2X | 53-452-5 | - | 4-1-6051X | - | - | - |
| -40 | 40-19-42-2X | 53-452-5 | - | 4-1-6051X | - | - | 40-18-1-2X |
| -41 | 40-19-42-2X | 53-452-5 | - | 5-1-6311-1X | - | - | - |
| -60 | 40-19-39-1X | 53-452-6 | - | - | - | - | - |

MODEL ES53-5

TABULATED BILLS OF MATERIAL

T210-ES53-5

| Tab No. | Used By | For Use With Clutch | CLUTCH HOUSING | | | Main Drive Gear | Drive Gear Bearing Cap F-1 | Case Assembly G-1 |
|---------|---------|---------------------|----------------|---------------------|--------------------|-----------------|----------------------------|-------------------|
| | | | S A E | Assembly No. E-1 | Rel. Code Pages | | | |

**Model ES53-5D
301632**

| | | | | | | | | |
|------|-------------------|-----------|---|--------------|-----|-------------|-------------|-------------|
| **-1 | Navistar | Pull Type | 2 | 49-518-9-1X | - | 49-35-21-1X | 49-19-10-1X | 49-15-6-1X |
| -2 | Navistar | Pull Type | 2 | 49-518-9-1X | - | 49-35-21-1X | 49-19-10-1X | 49-15-6-1X |
| **-3 | Navistar | Push Type | 2 | 49-518-9-1X | - | 49-35-17-1X | 49-19-9-1X | 49-15-6-1X |
| -4 | Navistar | Push Type | 2 | 49-518-9-1X | - | 49-35-17-1X | 49-19-9-1X | 49-15-6-1X |
| -5 | Navistar | Pull Type | 2 | 49-518-9-1X | - | 49-35-21-1X | 49-19-10-1X | 49-15-6-1X |
| -6 | Navistar | Push Type | 2 | 49-518-9-1X | - | 49-35-17-1X | 49-19-9-1X | 49-15-6-1X |
| -7 | Navistar | Pull Type | 2 | 49-518-9-1X | - | 49-35-21-1X | 49-19-10-1X | 49-15-6-1X |
| -8 | Capacity of Texas | Push Type | 2 | 49-518-9-1X | 50 | 49-35-17-1X | 49-19-8-1X | 49-15-6-1X |
| -9 | Navistar | Pull Type | 2 | 49-518-9-1X | - | 49-35-21-1X | 49-19-10-1X | 49-15-6-1X |
| -10 | Navistar | Pull Type | 2 | 49-518-9-1X | - | 49-35-21-1X | 49-19-10-1X | 49-15-6-1X |
| -11 | Volvo Belgium | Pull Type | 2 | 49-518-11-1X | - | 49-35-21-1X | 49-19-10-1X | 49-15-6-1X |
| -12 | Direcspicer TSP | Pull Type | 2 | 49-518-9-1X | 112 | 49-35-21-1X | 49-19-10-1X | 49-15-6-1X |
| -13 | Direcspicer TSP | Pull Type | 2 | 49-518-9-1X | 112 | 49-35-21-1X | 49-19-10-1X | 49-15-6-1X |
| -14 | Spicer Australia | Pull Type | 2 | 49-518-9-1X | - | 49-35-21-1X | 49-19-10-1X | 49-15-6-1X |
| -15 | Ford | Pull Type | 2 | 49-518-10-1X | - | 49-35-20-1X | 49-19-10-1X | 49-15-10-1X |
| -16 | Service | Pull Type | 2 | 49-518-10-1X | 51 | 49-35-17-1X | 49-19-10-1X | 49-15-6-1X |
| *-17 | Volvo GM | Pull Type | 2 | 49-518-11-1X | - | 49-35-21-1X | 49-19-10-1X | 49-15-6-1X |
| -18 | Navistar | Push Type | 2 | 49-518-9-1X | - | 49-35-17-1X | 49-19-9-1X | 49-15-6-1X |
| -19 | Spicer Dr Tr | Pull Type | 2 | 49-518-9-1X | - | 49-35-20-1X | 49-19-10-1X | 49-15-6-1X |
| -20 | OshKosh | Push Type | 2 | 49-518-9-1X | - | 49-35-17-1X | 49-19-8-1X | 49-15-6-1X |
| -21 | Navistar | Push Type | 2 | 49-518-11-1X | - | 49-35-17-1X | 49-19-9-1X | 49-15-6-1X |
| -22 | Navistar | Pull Type | 2 | 49-518-9-1X | - | 49-35-20-1X | 49-19-10-1X | 49-15-6-1X |
| -23 | Navistar | Pull Type | 2 | 49-518-9-1X | - | 49-35-20-1X | 49-19-10-1X | 49-15-6-1X |
| -24 | Navistar | Pull Type | 2 | 49-518-9-1X | - | 49-35-20-1X | 49-19-10-1X | 49-15-6-1X |
| -25 | Navistar | Pull Type | 2 | 49-518-9-1X | - | 49-35-21-1X | 49-19-10-1X | 49-15-6-1X |
| -26 | Navistar | Push Type | 2 | 49-518-9-1X | - | 49-35-17-1X | 49-19-9-1X | 49-15-6-1X |
| -27 | Navistar | Push Type | 2 | 49-518-9-1X | - | 49-35-23-1X | 49-19-9-1X | 49-15-6-1X |
| -28 | Navistar | Push Type | 2 | 49-518-9-1X | - | 49-35-23-1X | 49-19-9-1X | 49-15-6-1X |
| -29 | OshKosh | Push Type | 2 | 49-518-11-1X | - | 49-35-17-1X | 49-19-8-1X | 49-15-6-1X |
| -30 | Direcspicer | Push Type | 2 | 49-518-9-1X | - | 49-35-21-1X | 49-19-13-1X | 49-15-11-1X |
| -31 | Navistar | Pull Type | 2 | 49-518-9-1X | - | 49-35-20-1X | 49-19-10-1X | 49-15-6-1X |
| -32 | Navistar | Push Type | 2 | 49-518-9-1X | - | 49-35-23-1X | 49-19-9-1X | 49-15-6-1X |
| -33 | Transtes | Pull Type | 2 | 49-518-9-1X | - | 49-35-20-1X | 49-19-10-1X | 49-15-6-1X |
| -34 | Ford | Pull Type | 2 | 49-518-10-1X | - | 49-35-20-1X | 49-19-10-1X | 49-15-6-1X |
| -35 | Cummins | Push Type | 2 | 49-518-10-1X | - | 49-35-17-1X | 49-19-8-1X | 49-15-6-1X |
| -36 | OshKosh | Push Type | 2 | 49-518-11-1X | - | 49-35-17-1X | 49-19-8-1X | 49-15-6-1X |
| -37 | Volvo | Push Type | 2 | 49-518-11-1X | - | 49-35-17-1X | 40-19-47-1X | 49-15-6-1X |
| -38 | Soft Track | Pull Type | 2 | 49-518-9-1X | - | 49-35-21-1X | 49-19-10-1X | 49-15-6-1X |
| -39 | Boured Drill | Pull Type | 2 | 49-518-9-1X | - | 49-35-21-1X | 49-19-10-1X | 49-15-6-1X |
| -60 | Ford | - | - | - | - | - | - | - |

MODEL ES53-5

TABULATED BILLS OF MATERIAL

T210-ES53-5

| Tab No. | Mainshaft Rear Brg. Cap Assembly H-1 | Speedometer | | End Yoke or Companion Flange | Shifter | | |
|---------|--------------------------------------|--------------------------------|-----------------|------------------------------|------------------|-----------------------------|----------------------|
| | | Drive Gear or Signal Gear B-24 | Driven Gear H-7 | | Housing Assembly | Lever & Dome Assembly Pages | Remote Control Pages |

Model ES53-5D
301632

| | | | | | | | |
|-----|-------------|----------|----------|------------|---|--------------|-------------|
| -1 | 40-19-43-2X | 53-452-5 | - | - | - | - | - |
| -2 | 40-19-41-2X | 53-452-5 | - | - | - | - | - |
| -3 | 40-19-43-2X | 53-452-5 | - | - | - | - | - |
| -4 | 40-19-41-2X | 53-452-5 | - | - | - | - | - |
| -5 | 40-19-43-2X | 53-452-5 | - | - | - | - | - |
| -6 | 40-19-43-2X | 53-452-5 | - | - | - | - | - |
| -7 | 40-19-42-2X | 53-452-5 | - | - | - | - | - |
| -8 | 40-19-43-2X | 53-452-5 | - | 4-4-4491-1 | - | - | 40-18-1-2X |
| -9 | 40-19-38-2X | 53-452-3 | - | - | - | - | - |
| -10 | 40-19-19-2X | 53-452-3 | - | - | - | - | - |
| -11 | 40-19-49-2X | 53-452-7 | - | 5-4-6321-1 | - | - | 40-18-1-8X |
| -12 | 40-19-43-2X | 53-452-5 | - | 6-4-7301 | - | 40-17-1-41X | - |
| -13 | 40-19-43-2X | 53-452-5 | - | 6-4-7301 | - | 40-17-1-42X | - |
| -14 | 40-19-43-2X | 53-452-5 | - | 5-4-6321-1 | - | - | 40-18-1-9X |
| -15 | 40-19-39-2X | 53-452-6 | - | 5-4-6481-1 | - | - | - |
| -16 | 40-19-43-2X | 53-452-5 | - | 3-4-8781 | - | - | - |
| -17 | 40-19-49-2X | 53-452-7 | - | - | - | - | 40-18-1-8X |
| -18 | 40-19-19-2X | 53-452-3 | - | - | - | - | - |
| -19 | 40-19-38-2X | 53-452-4 | 53-453-2 | - | - | - | - |
| -20 | 40-19-22-1X | 53-452-3 | 62-453-4 | 4-1-6051X | - | - | - |
| -21 | 40-19-42-2X | 53-452-5 | - | - | - | - | - |
| -22 | 40-19-43-2X | 53-452-5 | - | - | - | - | - |
| -23 | 40-19-41-2X | 53-452-5 | - | - | - | - | - |
| -24 | 40-19-43-2X | 53-452-5 | - | - | - | - | - |
| -25 | 201-37-7 | 53-452-5 | - | - | - | - | - |
| -26 | 201-37-7 | 53-452-5 | - | - | - | - | - |
| -27 | 40-19-43-2X | 53-452-5 | - | - | - | - | - |
| -28 | 40-19-41-2X | 53-452-5 | - | - | - | - | - |
| -29 | 40-19-38-2X | 53-452-3 | 62-453-4 | - | - | - | - |
| -30 | 40-19-43-2X | 53-452-5 | - | 5-4-6321 | - | 101-17-2-29X | - |
| -31 | 201-37-7 | 53-452-5 | - | - | - | - | - |
| -32 | 201-37-7 | 53-452-5 | - | - | - | - | - |
| -33 | 40-19-43-2X | 53-452-5 | - | 5-4-6321-1 | - | - | 40-18-1-13X |
| -34 | 40-19-39-2X | - | - | - | - | - | - |
| -35 | 40-19-38-2X | 53-452-3 | 62-453-4 | - | - | 101-17-2-29X | - |
| -36 | 40-19-38-2X | 53-452-3 | 62-453-4 | - | - | - | - |
| -37 | 40-19-49-2X | 53-452-7 | - | 4-4-4499-1 | - | - | 40-18-1-8X |
| -38 | 40-19-42-2X | 53-37-1 | - | 4-1-6051X | - | - | 40-18-1-2X |
| -39 | 40-19-38-2X | 53-37-1 | - | - | - | - | 40-18-1-2X |
| -60 | 40-19-39-3X | 53-452-6 | - | - | - | - | - |

BACK-TAPER CHANGEOVER KITS FOR ES53-5 TRANSMISSIONS

Kits will be available November 25, 1996

ES53-5, A Ratio, 4/5 Shift Rail, Kit 49-35-16-3X

| | | <u>Old Drive Gear</u> | <u>New Drive Gear</u> | <u>Order Kit #</u> |
|---------------------|------------|-----------------------|-----------------------|--------------------|
| Drive Gear | 49-35-16 | 49-35-1 | 49-35-16 | 49-35-16-3X |
| M/S 4th Gear | 49-8-18 | 49-35-3 | 49-35-17 | 49-35-17-4X |
| Synchronizer | 101-464-1X | 49-35-4 | 49-35-18 | 49-35-18-3X |
| Clutch Gear | 49-466-4 | 49-35-5 | 49-35-19 | 49-35-19-3X |
| Shift Rail Assembly | 49-69-1X | 49-35-6 | 49-35-20 | 49-35-20-3X |
| Poppet Plunger | 101-438-9 | 49-35-8 | 49-35-21 | 49-35-21-3X |
| Poppet Spring | 101-72-7 | 49-35-10 | 49-35-22 | 49-35-22-3X |
| Identification Tag | NP-204 | 49-35-11 | 49-35-23 | 49-35-23-3X |

Above Kits are the same except for the Drive Gear.
See Kit part list left.

ES53-5, D Ratio, 4/5 Shift Rail, Kit 49-35-16-4X

| | | <u>Old Drive Gear</u> | <u>New Drive Gear</u> | <u>Order Kit #</u> |
|---------------------|------------|-----------------------|-----------------------|--------------------|
| Drive Gear | 49-35-16 | 49-35-1 | 49-35-16 | 49-35-16-4X |
| M/S 4th Gear | 49-8-19 | 49-35-3 | 49-35-17 | 49-35-17-5X |
| Synchronizer | 101-464-1X | 49-35-4 | 49-35-18 | 49-35-18-4X |
| Clutch Gear | 49-466-4 | 49-35-5 | 49-35-19 | 49-35-19-4X |
| Shift Rail Assembly | 49-69-1X | 49-35-6 | 49-35-20 | 49-35-20-4X |
| Poppet Plunger | 101-438-9 | 49-35-8 | 49-35-21 | 49-35-21-4X |
| Poppet Spring | 101-72-7 | 49-35-10 | 49-35-22 | 49-35-22-4X |
| Identification Tag | NP-204 | 49-35-11 | 49-35-23 | 49-35-23-4X |

Above Kits are the same except for the Drive Gear.
See Kit part list left.

ES53-5, A & D Ratio, 2/3 Shift Rail, Kit 49-8-20-3X

| | |
|---------------------|-----------|
| M/S 3rd Gear | 49-8-20 |
| M/S 2nd Gear | 49-8-21 |
| Synchronizer | 49-464-1X |
| Clutch Gear | 101-466-7 |
| Shift Rail Assembly | 49-69-2X |
| Poppet Plunger | 101-438-9 |
| Poppet Spring | 101-72-7 |
| Identification Tag | NP-204 |

Note: Due to the nature of back-tapered clutching teeth, the straight toothed parts are not interchangeable with back-tapered parts. The entire kit must be installed so that a given rail has parts that have either straight toothed clutching teeth or back-tapered clutching teeth. Do not mix straight toothed parts with back-tapered parts.



14700 Helm Court
Plymouth, MI 48170
(800) 401-9866 or (734) 456-3770
Fax: (734) 456-3739
www.ttcautomotive.com

