

ES42-5 Series Transmission

WEATHERLY INDEX 084

T210-ES42-5

April 1, 1990

ES42-5 Series

Parts List

Replaces T210-ES42-5

Dated April 1, 1988





MODEL ES42-5

CONTENTS, RATIO TABLE and IDENTIFICATION

T210-ES42-5

CONTENTS

| | |
|---|-------|
| RATIO TABLE | 1 |
| GEARS and RELATED PARTS | 2-5 |
| DRIVE GEAR GROUP | 2-3 |
| MAINSHAFT GROUP | 2-3 |
| COUNTERSHAFT GROUP | 4-5 |
| REVERSE IDLER SHAFT GROUP | 4-5 |
| DRIVE GEAR TABLE | 5 |
| CLUTCH HOUSING DIMENSIONS | 6-7 |
| DRIVE GEAR BEARING CAP GROUP | 8-9 |
| DRIVE GEAR BEARING CAP CHART WITH CLUTCH APPLICATIONS | 9 |
| CASE GROUP and TABLE | 10-11 |
| REAR BEARING CAP CHART WITH BRAKE APPLICATIONS | 12 |
| REAR BEARING CAP GROUP and RELATED PARTS | 12-13 |
| SHIFT BAR and FORK ASSEMBLY | 14 |
| SHIFT LEVER and DOME ASSEMBLY | 15 |
| CLUTCH RELEASE CODE TABLE | 16-17 |
| REMOTE CONTROL ASSEMBLY | 18 |
| COMPANION FLANGES and END YOKES | 19 |
| OVERHAUL KITS—MAJOR and MINOR | 20-21 |
| TABULATED BILLS OF MATERIALS | 22-25 |

RATIO TABLE

| SPEEDS | MODELS | |
|--------|---------|---------|
| | ES42-5A | ES42-5D |
| 1st | 7.22 | 7.22 |
| 2nd | 3.88 | 3.88 |
| 3rd | 2.21 | 2.21 |
| 4th | 1.42 | 1.26 |
| 5th | 1.00 | 1.00 |
| Rev. | 7.22 | 7.22 |

IDENTIFICATION

The Name Plate (NP-96) affixed to the RIGHT side of the Transmission is stamped with information:

SERIAL

B/M No. MODEL

Abbreviations used in this parts list include:

- N.S. — Not Shown
- N.S.S. — Not Sold Separately
- N.R. — Not Required

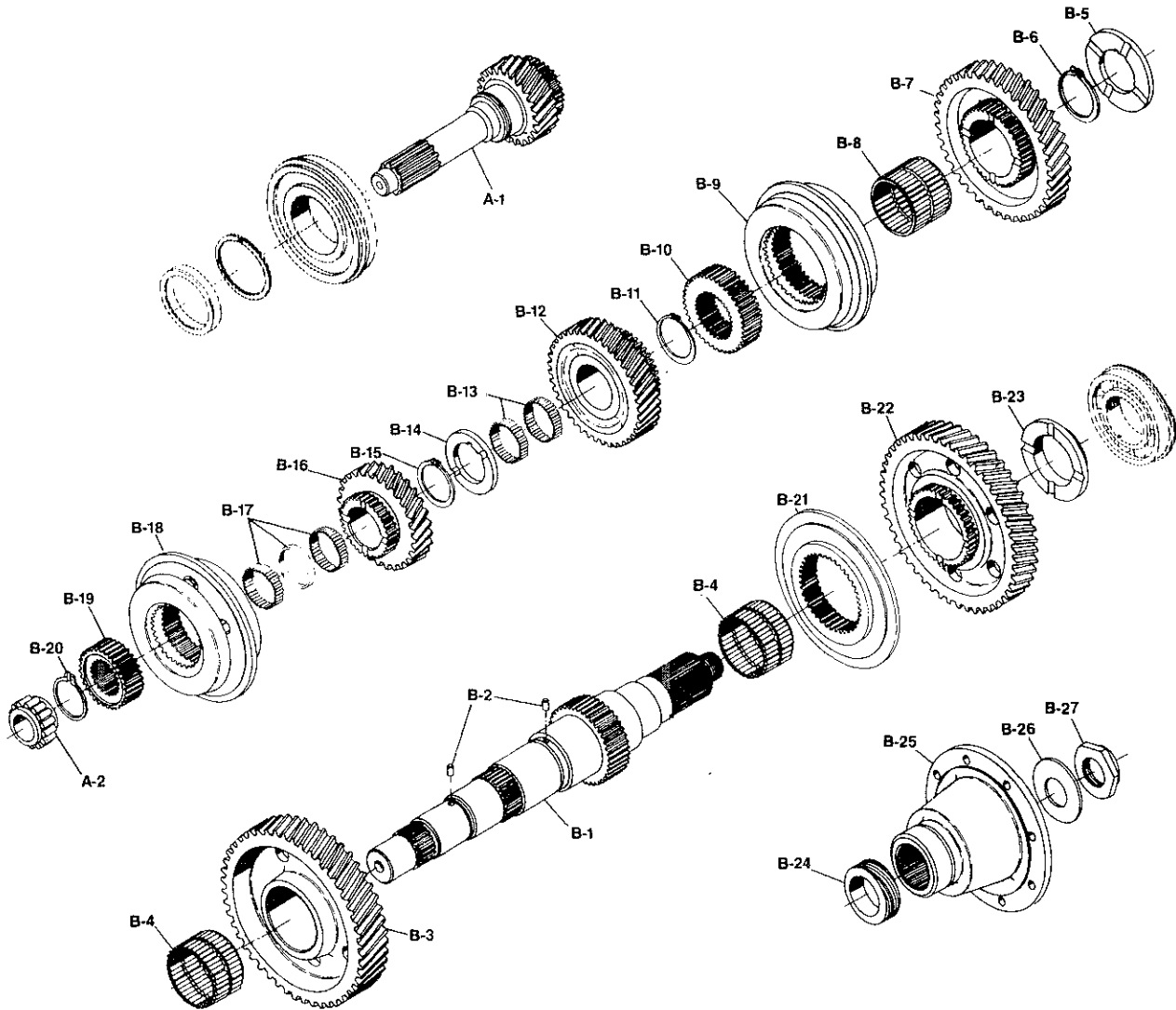
In requesting more information on these transmissions, furnish the B/M No. and the Serial Number.

MODEL ES42-5

GEARS and RELATED PARTS



T210-ES42-5



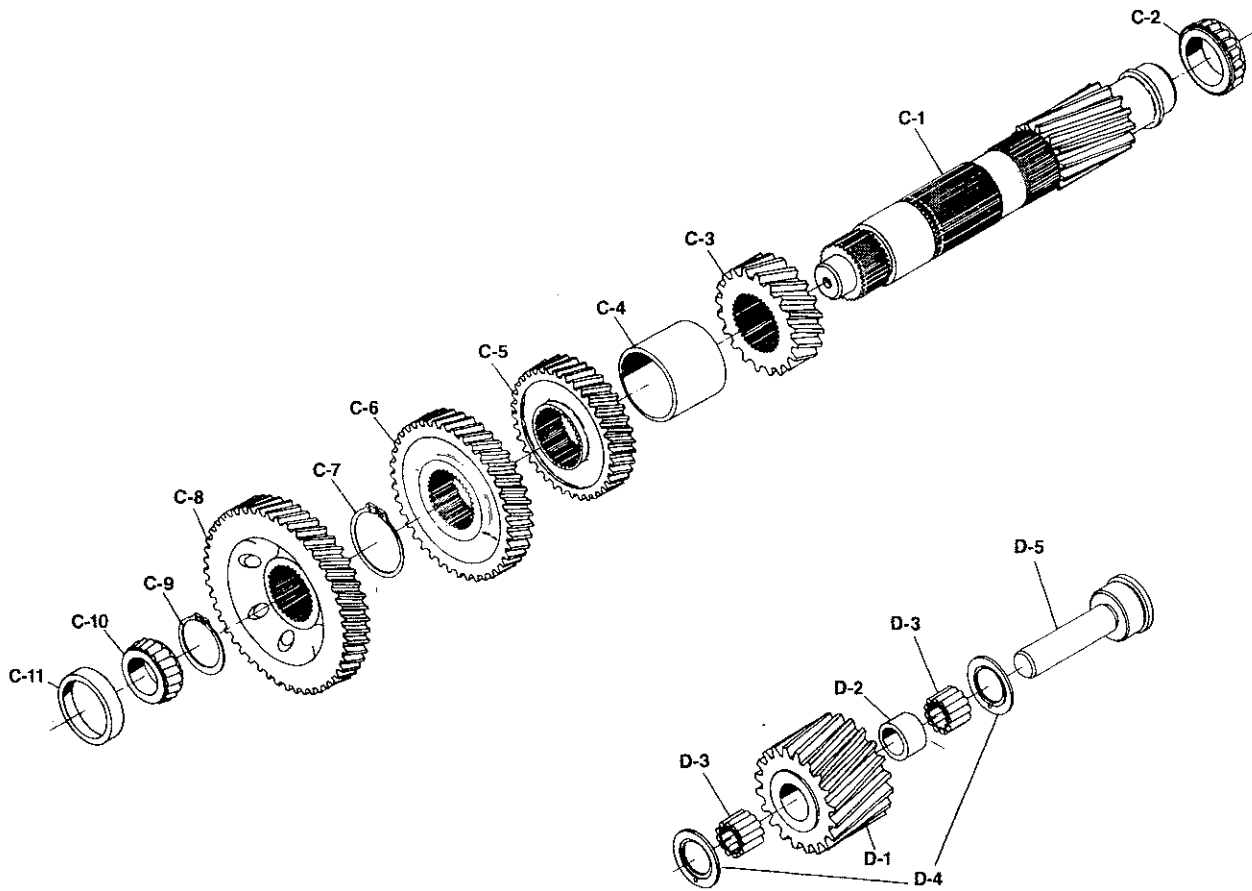


| Ref. No. | Part Number | Part Description | Qty. |
|-------------------------------|---------------|---|------|
| DRIVE GEAR GROUP—INPUT | | | |
| A-1 | See Tab Bills | Gear, drive (see table page 5) | 1 |
| A-2 | 550986 | Bearing, M/S pocket | 1 |
| MAINSHAFT GROUP—OUTPUT | | | |
| B-1 | 40-362-3 | Mainshaft | 1 |
| B-2 | 545087 | Pin-thrust washer lock | 2 |
| B-3 | 40-8-7 | Gear-1st speed (46T) | 1 |
| B-4 | 550963 | Bearing—1st & reverse gear needle | 2 |
| B-5 | 40-47-2 | Thrust washer—1st & 2nd speed | 1 |
| B-6 | 40-381-4 | Ring, snap, 1st & 2nd thrust washer | 1 |
| B-7 | 40-8-5 | Gear—2nd speed (38T) | 1 |
| B-8 | 550968 | Bearing—2nd speed needle | 1 |
| B-9 | 313471X | Synchronizer—2nd & 3rd speed | 1 |
| B-10 | 40-466-2 | Gear—2nd & 3rd speed clutch | 1 |
| B-11 | 40-381-3 | Ring, snap, 2nd & 3rd, M/S clutch | 1 |
| B-12 | 40-8-17 | Gear—3rd speed (39T) | 1 |
| B-13 | 313661X | Bearing Kit—M/S 3rd needle | 1 |
| B-14 | 40-47-3 | Washer—thrust, 3rd & 4th speed | 1 |
| B-15 | 40-381-2 | Ring, snap—3rd & 4th, thrust washer | 1 |
| B-16 | 40-8-19 | Gear—4th speed | 1 |
| | 40-8-21 | (28T) for ES42-5A | |
| | | (26T) for ES42-5D | |
| B-17 | 313662X | Bearing Kit— needle & spacer 4th | 1 |
| B-18 | 313558X | Synchronizer—4th & 5th speed | 1 |
| B-19 | 49-466-2 | Gear—4th & 5th speed clutch (33T) | 1 |
| B-20 | 40-381-1 | Ring, snap, 4th & 5th clutch gear | 1 |
| B-21 | 40-465-11 | Collar, clutch—1st & reverse | 1 |
| B-22 | 40-8-9 | Gear—reverse (46T) | 1 |
| B-23 | 49-47-3 | Washer, thrust—reverse | 1 |
| B-24 | See tab bills | Gear—speedometer drive | 1 |
| or | 53-37-1 | Spacer—used in place of gear | 1 |
| B-25 | See tab bills | Companion flange or yoke | 1 |
| B-26 | 53-205-1 | Washer—mainshaft nut | 1 |
| B-27 | 501200 | Nut—mainshaft (1¼"-18 hex) | 1 |

MODEL ES42-5

GEARS and RELATED PARTS

T210-ES42-5



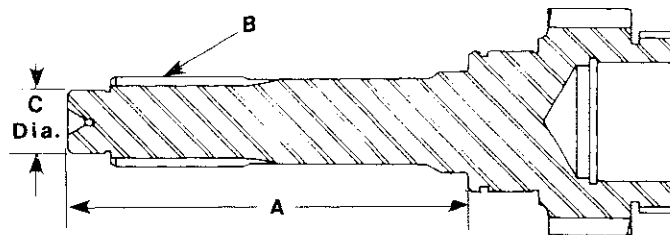


MODEL ES42-5

GEARS and RELATED PARTS

T210-ES42-5

| Ref. No. | Part Number | Part Description | Qty. |
|----------------------------------|-------------|--|------|
| COUNTERSHAFT GROUP | | | |
| C-1 | 40-30-1 | Countershaft | 1 |
| C-2 | 550966 | Bearing—countershaft rear | 1 |
| C-3 | 40-196-5 | Gear—2nd speed (20T) | 1 |
| C-4 | 40-37-1 | Spacer—2nd & 3rd speed gear | 1 |
| C-5 | 40-196-3 | Gear—3rd speed (36T) | 1 |
| C-6 | | Gear—4th speed | 1 |
| | 40-196-1 | (40T) for ES42-5A | |
| | 40-196-7 | (42T) for ES42-5D | |
| C-7 | 40-381-5 | Ring, snap—C/S 4th speed gear | 1 |
| C-8 | 40-1-1 | Gear—drive (49T) | 1 |
| C-9 | 40-381-3 | Ring, snap 2nd & 3rd clutch gear | 1 |
| C-10 | 550964 | Bearing, cone—C/S front | 1 |
| C-11 | 550965 | Bearing, cup—C/S front | 1 |
| REVERSE IDLER SHAFT GROUP | | | |
| D-1 | 40-5-1 | Gear—reverse idler (21T) | 1 |
| D-2 | 97-37-1 | Spacer—bearing | 1 |
| D-3 | 550886 | Bearing—reverse idler | 2 |
| D-4 | 974-W | Washer—thrust, reverse idler | 2 |
| D-5 | 40-60-1 | Shaft—reverse idler | 1 |



DRIVE GEAR TABLE

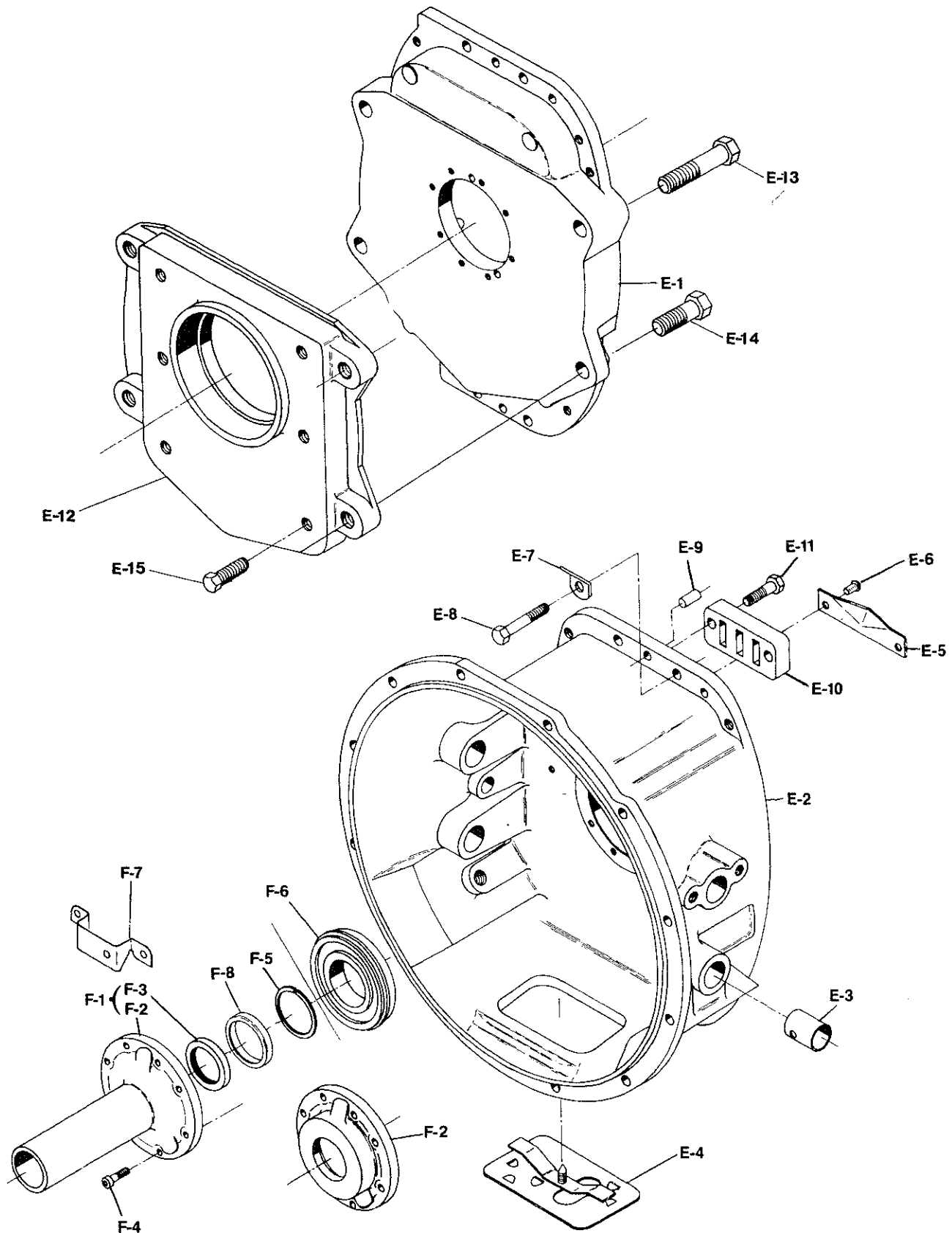
| A Length | B Spline Dia. Teeth | C-Pilot Size | Drive Gear Part No. |
|----------|----------------------|--------------|---------------------|
| 6.439" | 1 $\frac{3}{8}$ "-10 | .9837" | 40-35-17-1X* |
| 9.929" | 1 $\frac{1}{2}$ "-10 | .9837" | 40-35-18-1X* |
| 8.179" | 1 $\frac{1}{2}$ "-10 | .9837" | 40-35-19-1X* |
| 7.239" | 1 $\frac{1}{2}$ "-10 | .9837" | 40-35-20-1X* |
| 9.875" | 1 $\frac{3}{4}$ "-10 | 1.1800" | 40-35-21-1X* |
| 9.875" | 1 $\frac{3}{4}$ "-10 | .9837" | 40-35-22-1X* |

*Consists of (1) Drive Gear and (1) 49-468-2.

MODEL ES42-5 CLUTCH HOUSING



T210-ES42-5





MODEL ES42-5 CLUTCH HOUSING

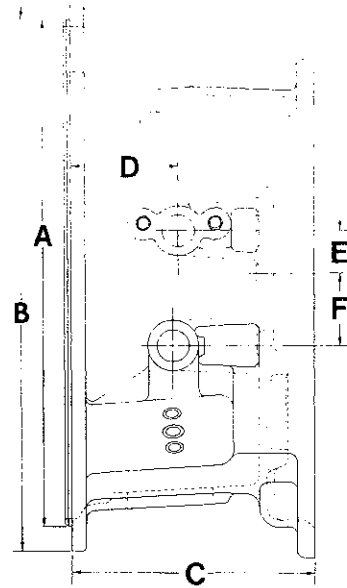
T210-ES42-5

| Ref. No. | Part Number | Part Description | Qty. |
|-----------------------|--------------|---|------|
| CLUTCH HOUSING | | | |
| E-1 | 49-360-3-1X* | Retainer—case front end (Ford—gas only) | 1 |
| | 49-360-4-1X* | Retainer—case front end (GMC—gas only) | 1 |
| E-2 | See Table | Clutch housing | 1 |
| E-3 | 128C-20 | Bushing | 2 |
| E-4 | 46-96-2-1X | Hand hole cover assembly | 1 |
| E-5 | 40-468-1 | Oil trough | 1 |
| E-6 | 545088 | Pin | 2 |
| E-7 | 330564-1 | Lift hook | 1 |
| E-8 | 545082-2 | Bolt—clutch housing to case MF10 × 1.25 × 30mm | 14 |
| and | 545082-3 | Bolt—clutch housing MF10 × 1.25 × 35mm (used in the (2) lower holes) | 2 |
| E-9 | 545086 | Dowel pin | 2 |
| E-10 | 40-477-1 | Support—front shift bar | 1 |
| E-11 | 545082-3 | Bolt—shift bar support MF10 × 1.25 × 35mm | 2 |
| E-12‡ | 40-215-1 | Adaptor—clutch housing | 1 |
| E-13‡ | 545008-6 | Screw—.625-11 × 3.500" | 2 |
| E-14‡ | 545008-3 | Screw—.625-11 × 1.750" | 2 |
| E-15‡ | 545001 | Screw—.500-13 × 1.25" | 6 |

*Retainer assemblies 49-360-3-1X and 49-360-4-1X contain 1 oil trough (40-468-1) and 2 pins (545088).
‡Required with #3 clutch housing—with 49-360-3-1X

| SAE | | |
|----------|----------------------------------|----------------------------------|
| Size No. | A Pilot Dia. | B O.D. |
| 1 | 20 ¹ / ₈ " | 21 ³ / ₄ " |
| 2 | 17 ⁵ / ₈ " | 19 ¹ / ₄ " |
| 3 | 16 ¹ / ₈ " | 17 ³ / ₄ " |

CLUTCH HOUSING DIMENSIONS



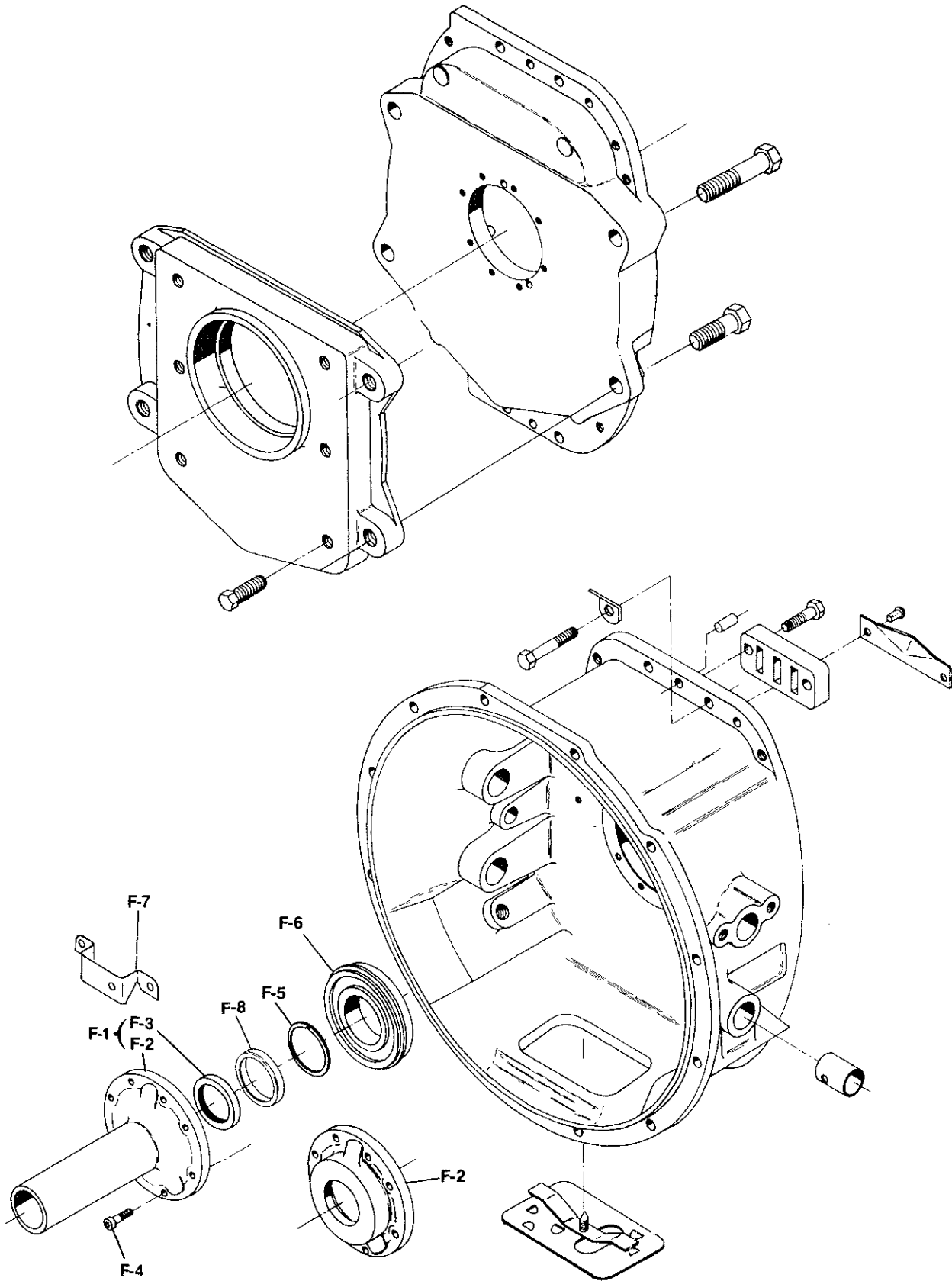
| CLUTCH HOUSING | | | | | RELEASE SHAFT HOLE | | | |
|---------------------|-----------------|-------------|-------------|-----------------------------------|--------------------|--|--------------------------------------|--------------------------------------|
| Assembly No. E-2 | Part No. E-2 | Casting No. | S A E | C Length | Dia. | D C/L to Front Face | E Above C/L | F Below C/L |
| 46-518-21-1X | 46-518-21 | C102C-477 | 3 | 5 ¹ / ₁₆ " | 1" | 3" 2 ¹⁷ / ₃₂ " | 1 ¹ / ₂ " — | — 2 ⁵ / ₈ " |
| 49-518-4-2X | 49-518-4 | C40-518-2 | 2 | 8 ¹⁷ / ₃₂ " | 1" | 3 ³ / ₄ " 3 ¹⁹ / ₃₂ " | 1 ¹ / ₂ " — | — 2 ¹ / ₂ " |
| 49-518-5-2X | 49-518-5 | C40-518-2-1 | 2 | 8 ¹⁷ / ₃₂ " | 1" | 3 ³ / ₄ " 2 ⁹ / ₁₆ " | 1 ¹ / ₂ " — | — 3" |
| 49-518-6-1X | 49-518-6 | C40-518-4-1 | 2 | 6.802" | — | — | — | — |
| 49-518-7-2X | 49-518-7 | C40-518-4 | 2 | 4 ³ / ₄ " | — | — | — | — |

†Includes (4) release shaft bushings 128C-20.

MODEL ES42-5 CLUTCH HOUSING

SPICER®
DANA

T210-ES42-5





MODEL ES42-5

DRIVE GEAR BEARING CAP GROUP

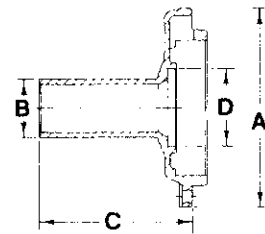
T210-ES42-5

| Ref. No. | Part Number | Part Description | Qty. |
|-------------------------------------|---------------|---|------|
| DRIVE GEAR BEARING CAP GROUP | | | |
| F-1 | See Tab Bills | Cap & seal assembly (see table below) | 1 |
| F-2 | N.S.S. | Cap | 1 |
| F-3 | 40-463-6-1X | Seal—drive gear bearing cap (stem only) | 1 |
| or | 40-463-4-1X | Seal—drive gear bearing cap (flat only) | 1 |
| F-4 | 545093 | Cap screw—drive gear bearing cap (M6 × 1.00 × 25mm) | 8 |
| F-5 | 46-381-1 | Snap ring | 1 |
| F-6 | 550988 | Bearing—drive gear front | 1 |
| F-7 | 40-411-1 | Return spring bracket (Navistar only) | 1 |
| F-8 | 49-468-2 | Ring, oil | 1 |

FLAT TYPE



STEM TYPE



DRIVE GEAR BEARING CAP CHART

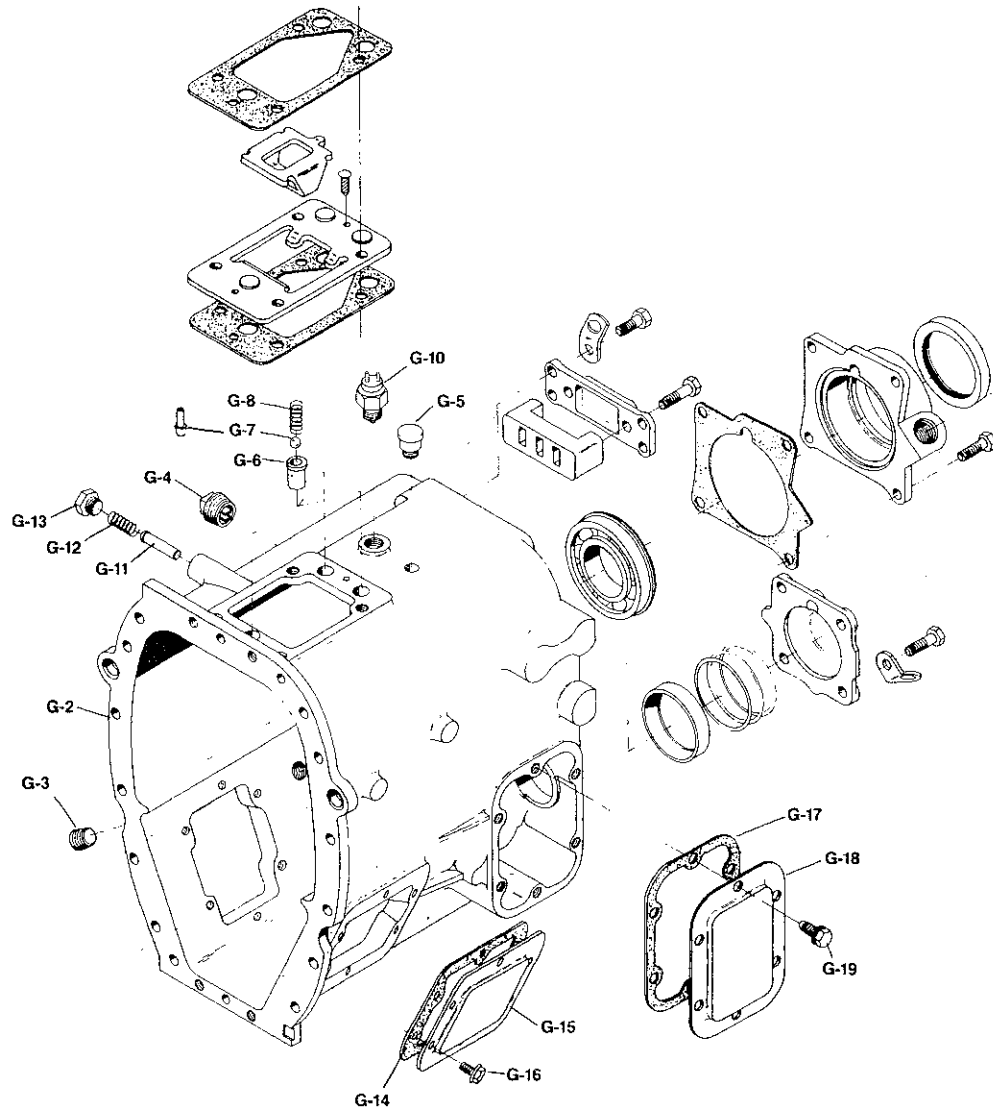
| A Outside Diameter | B Stem Diameter | C Length | D Inside Diameter For Oil Seal | FRONT BEARING CAP F-1 | |
|--|-----------------------------------|-----------------------------------|--------------------------------------|---------------------------|--------------------------------|
| | | | | Part Number N.S.S. F-2 | Assy. Includes Oil Seal F-3 |
| FLAT TYPE—For Spicer Pull Type Clutches | | | | | |
| PULL TYPE RELEASE | | | | | |
| 5 ⁵ / ₁₆ " | — | 1 ⁷ / ₁₆ " | 2 ⁹ / ₁₆ " | 40-19-40 | 40-19-40-1X |
| STEM TYPE—For all Push Type Clutches | | | | | |
| PUSH TYPE RELEASE | | | | | |
| 5 ⁵ / ₁₆ " | 1 ¹⁵ / ₁₆ " | 6 ¹⁷ / ₆₄ " | 2 ¹ / ₁₆ " | 40-19-1 | 40-19-1-1X |
| 5 ¹ / ₈ " | 1 ³ / ₄ " | 4 ⁹ / ₆₄ " | 2 ¹ / ₁₆ " | 40-19-3 | 40-19-3-1X |
| 5 ⁵ / ₁₆ " | 1 ⁷ / ₈ " | 5 ⁴³ / ₆₄ " | 2 ¹ / ₁₆ " | 40-19-5 | 40-19-5-1X |
| 5 ¹ / ₄ " | 1 ⁷ / ₈ " | 4 ³ / ₈ " | 2 ¹ / ₁₆ " | 40-19-6 | 40-19-6-1X |
| 5 ⁵ / ₁₆ " | 1 ⁷ / ₈ " | 6 ²¹ / ₃₂ " | 2 ¹ / ₁₆ " | 40-19-24 | 40-19-24-1X |
| 5 ¹ / ₈ " | 1 ¹⁵ / ₁₆ " | 6 ¹⁷ / ₆₄ " | 2 ¹ / ₁₆ " | 40-19-29 | 40-19-29-1X |
| 5 ¹ / ₈ " | 1 ⁷ / ₈ " | 5 ⁴³ / ₆₄ " | 2 ¹ / ₁₆ " | 40-19-30 | 40-19-30-1X |
| 5 ⁵ / ₁₆ " | 1 ⁷ / ₈ " | 6 ²¹ / ₃₂ " | 2 ¹ / ₁₆ " | 40-19-31 | 40-19-31-1X |
| 5 ⁵ / ₁₆ " | 1 ⁷ / ₈ " | 4 ⁵⁹ / ₆₄ " | 2 ¹ / ₁₆ " | 40-19-32 | 40-19-32-1X |
| 5 ⁵ / ₁₆ " | 1 ⁷ / ₈ " | 6 ²¹ / ₃₂ " | 2 ¹ / ₁₆ " | 40-19-35 | 40-19-35-1X |

N.S.S.—Not Sold Separately

MODEL ES42-5

CASE GROUP

T210-ES42-5





| Ref. No. | Part Number | Part Description | Qty. |
|-------------------|---------------|--|------|
| CASE GROUP | | | |
| G-1 | See Tab Bills | Case assembly (see case table below) | 1 |
| G-2 | N.S.S. | Case | 1 |
| N.S. | NP-96 | Nameplate | 1 |
| N.S. | 252-SP | Pin—nameplate | 4 |
| G-3 | 500100 | Plug—filler (3/4"-14 N.P.T.F.) | 1 |
| G-4 | 62-39-3 | Plug—magnetic drain (3/4"-14 N.P.T.F.) | 1 |
| N.S. | 330800 | Plug—side hole (3/8"-16 x 3/4") | 2 |
| N.S. | 330934 | Magnet, ceramic (case, inside, bottom, front) | 1 |
| G-5 | 312268 | Breather | 1 |
| G-6 | 40-487-1 | Insert—poppet spring & ball | 3 |
| G-7 | 40-80-1 | Ball—poppet (BSSN J880705001) | 3 |
| or | 101-438-4 | Plunger—poppet (ASSN J880705001) | 3 |
| G-8 | 97-72-23 | Spring—shift bar poppet | 3 |
| G-10 | 313539 | Switch—back-up lite (Ford only) | 1 |
| | 313538 | Switch—back-up lite (Navistar only) | 1 |
| | 313552 | Switch—back-up lite (GMC only) | 1 |
| G-11 | 40-438-1 | Pin—1st & reverse select plunger | 1 |
| G-12 | 62-72-8 | Spring—1st & reverse shift finger plunger (standard) | 1 |
| or | 30-72-6 | Spring—1st & reverse (Hino Motors LTD) | 1 |
| or | 40-72-3 | Spring—1st & reverse (Spicer DriveTrain Australia) | 1 |
| G-13 | 40-59-1 | Plug—1st & reverse plunger | 1 |
| or | 40-59-2 | Plug—reverse stop (w/o reverse gear) | 1 |
| G-14 | 97-324-1-1X | Gasket—6 bolt P.T.O. aperture cover (l & r) | 2 |
| G-15* | 50-267-2 | Cover—6 bolt P.T.O. aperture (l & r) | 2 |
| G-16 | 330800 | Bolt—P.T.O. aperture (l & r) (3/8"-16 x 3/4") | 12 |
| G-17 | 49-324-1-1X | Gasket—reverse idler cover | 1 |
| G-18 | 40-96-3 | Cover—reverse idler | 1 |
| G-19 | 545085 | Bolt—reverse idler cover (M10 x 1.5 x 20mm) | 6 |

*For B/M 301438-37 (Navistar) this cover is replaced with Part No. 40-267-1X PTO cover. Used for a Magnetic Speed Sensor. Service with 40-267-1-1X (1671857C1).

CASE TABLE

| Case Assembly | Case Casting No. (N.S.S.) | Plug—Side Hole (N.S.) | 4 Pins N.S. (252-SP) Nameplate N.S. | OIL PLUG | | G-6 Poppet Insert | G-5 Breather | Used by |
|---------------|---------------------------|-----------------------|-------------------------------------|------------|-----------|-------------------|--------------|----------|
| | | | | G-3 Filler | G-4 Drain | | | |
| 40-15-6-1X | C40-15-7 | — | NP-96 | 500100 | 62-39-3 | 40-487-1 | 312268 | Ford |
| 40-15-8-1X | C40-15-7 | — | NP-96 | 500100 | 62-39-3 | 40-487-1 | 312268 | GMC |
| 40-15-9-1X | C40-15-7 | 330800 | NP-96 | 500100 | 62-39-3 | 40-487-1 | 312268 | Navistar |

BSSN—Before Starting Serial Number
 ASSN—After Starting Serial Number
 N.S.—Not Shown
 N.S.S.—Not Sold Separately

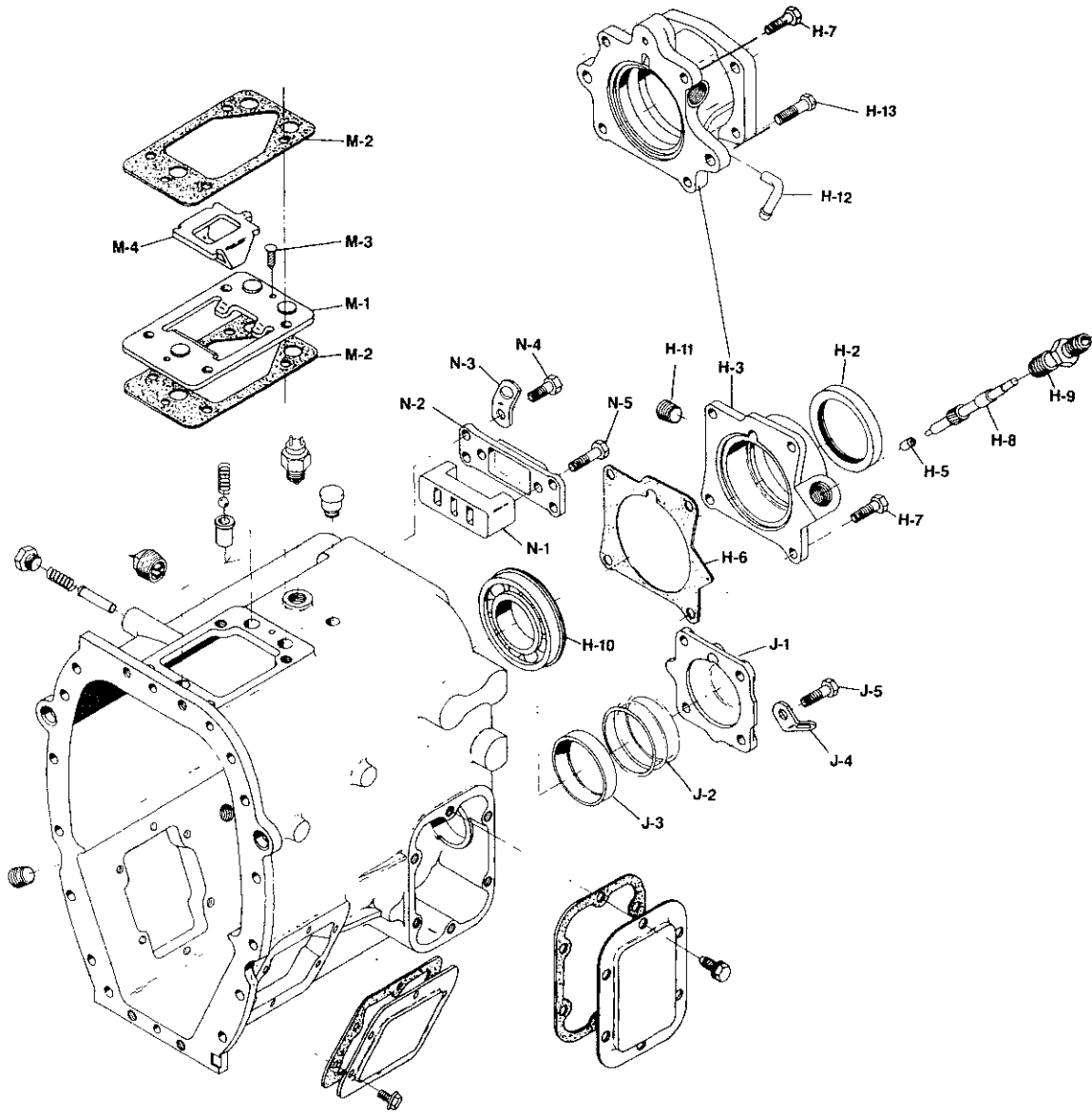
MODEL ES42-5

SPICER®



T210-ES42-5

REAR BEARING CAP GROUP & RELATED PARTS



BEARING CAP ASSEMBLY INCLUDES

| Part Number | Oil Seal | Casting Number | Speedometer Bushing | Brake | Bolt* |
|-------------|----------|----------------|---------------------|-------|---|
| H-1 | H-2 | — | H-5 | | |
| 40-19-19-2X | 63-463-1 | 40-19-19 | 60-475-1 | DCM | { 545082-3 (4) H-7 } { 545084-2 (2) H-13 } |
| 40-19-22-2X | 63-463-1 | 40-19-22 | 60-475-1 | DCM | { 545082-3 (4) H-7 } { 545084-2 (2) H-13 } |
| 40-19-38-2X | 63-463-1 | 40-19-38 | 60-475-1 | — | 545082-3 (4) H-7 |
| 40-19-39-1X | 63-463-1 | 40-19-39 | — | — | 545082-3 (4) H-7 |
| 40-19-41-2X | 63-463-1 | 40-19-41 | — | DCM | { 545082-3 (4) H-7 } { 545084-2 (2) H-13 } |
| 40-19-42-2X | 63-463-1 | 40-19-42 | — | DCM | { 545082-3 (4) H-7 } { 545084-2 (2) H-13 } |
| 40-19-43-2X | 63-463-1 | 40-19-43 | — | — | 545082-3 (4) H-7 |

*Refer to Spicer Service Topics #43—Dated 4-18-89.



| Ref. No. | Part Number | Part Description | Qty. |
|--|---------------|--|------|
| MAINSHAFT REAR BEARING CAP GROUP | | | |
| H-1 | See Tab Bills | Cap assembly—mainshaft bearing cap (see page 12) | 1 |
| H-2 | 63-463-1 | Oil seal—mainshaft rear bearing cap | 1 |
| H-3 | See Tab Bills | Cap sub-assembly—mainshaft rear (see page 12) | 1 |
| H-4 | N.S.S. | Cap—mainshaft rear bearing | 1 |
| H-5 | See Page 12 | Bushing—speedometer | 1 |
| H-6 | 40-223-1 | Gasket—mainshaft rear bearing cap | 1 |
| or | 40-223-3 | Gasket—mainshaft rear bearing cap (brake only) | 1 |
| H-7 | 545082-3 | Bolt—rear bearing cap (MF10 × 1.378 × 35mm) | 4 |
| and | 545084-4 | Plug—case (rear holes) (MF12 × 1.25 × 16mm) (used with 40-15-9 when using an air brake rear bearing cap | 2 |
| H-8 | See Tab Bills | Gear—speedometer drive | 1 |
| H-9 | 55-454-1 | Sleeve—1¼" speedometer driven gear | 1 |
| or | 97-454-2-1X | Sleeve and oil seal | 1 |
| N.S. | 44-539-1 | Cap—speedometer dust | 1 |
| N.S. | 55-334-1 | Plug—speedometer (use w/o driven gear) | 1 |
| N.S. | 545106 | Plug—speedometer outlet (Ford) (electronic) | 1 |
| H-10 | 550989 | Bearing—mainshaft rear | 1 |
| H-11 | 545021 | Plug—electronic speedometer (Ford) | 1 |
| H-12 | 37179 | Tube—vent (assembly toward front of trans) | 1 |
| H-13 | 545084-2 | Bolt—cap (D.C.M. brake) (MF12 × 1.25 × 35mm) | 2 |
| COUNTERSHAFT REAR BEARING CAP GROUP | | | |
| J-1 | 40-22-3 | Cap—countershaft rear bearing | 1 |
| J-2 | | Shim—countershaft rear bearing (.0055/.0045) | 1 |
| | 40-228-1-1 | (.1110/.0090) | 1 |
| | 40-228-1-2 | (.0165/.0135) | 1 |
| J-3 | 550967 | Cup—countershaft rear bearing | 1 |
| J-4 | 330564-1 | Lift hook | 1 |
| J-5 | 545002-4 | Bolt—countershaft rear bearing cap (3/8"-16 × 1 3/4") | 4 |
| INTERLOCK GROUP | | | |
| M-1 | 40-200-1 | Plate—interlock retainer | 1 |
| M-2 | 40-155-1 | Gasket—case to interlock plate | 2 |
| M-3 | 545091 | Screw—drive (interlock retainer) | 2 |
| M-4 | 40-200-2 | Plate—interlock | 1 |
| REAR SHAFT BAR SUPPORT GROUP | | | |
| N-1 | 40-477-2 | Support—rear shift bar | 1 |
| N-2 | 40-96-1 | Cap—rear shift bar | 1 |
| N-3 | 330564-1 | Lift hook | 1 |
| N-4 | 545082-1 | Bolt—shift bar cap (MF10 × 1.25 × 25mm) | 4 |
| N-5 | 545082-3 | Bolt—shift bar support (MF10 × 1.25 × 35mm) | 2 |

N.S.—Not Shown

N.S.S. Not Sold Separately

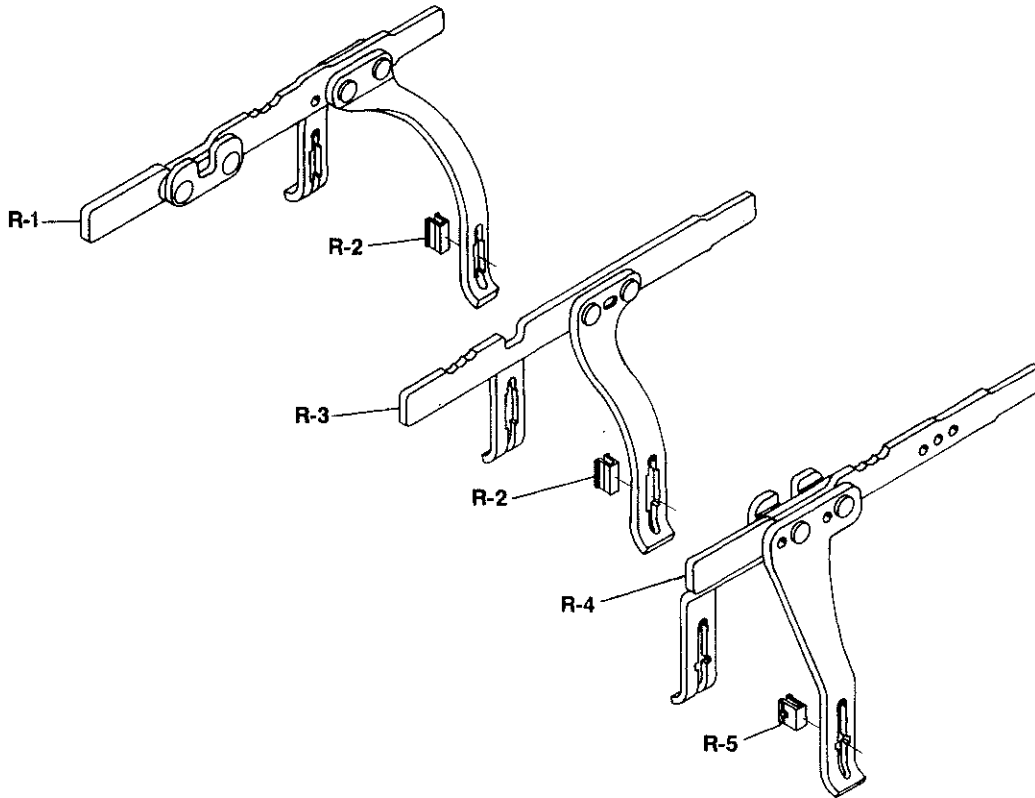
MODEL ES42-5

SHIFT BAR and FORK ASSEMBLY

SPICER®

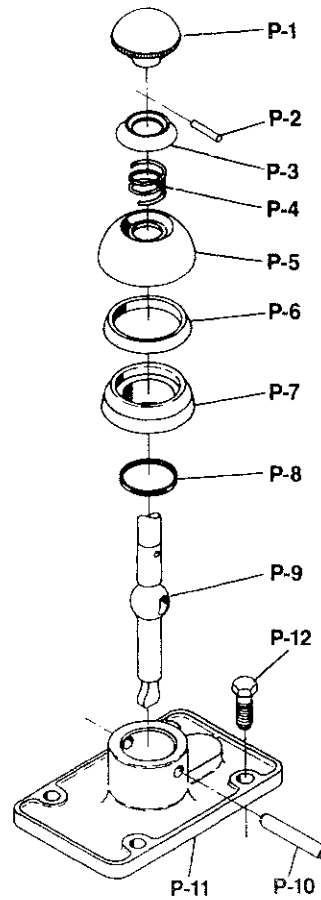


T210-ES42-5



| Ref. No. | Part Number | Part Description | Qty. |
|----------|-------------|--|------|
| | | SHIFT BAR and FORK ASSEMBLY | |
| R-1 | 313685-1X | Shift fork and bar—1st & reverse (includes (2) 49-468-3) | 1 |
| R-2 | 49-486-3 | Clip—1st & reverse shift fork | 2 |
| R-3 | 313686-1X | Shift fork and bar—2nd & 3rd (includes (2) 40-486-1) | 1 |
| R-4 | 40-486-1 | Clip—2nd, 3rd, 4th & 5th shift fork | 4 |
| R-5 | 313687-1X | Shift fork and bar—4th & 5th (includes (2) 40-486-1) | 1 |

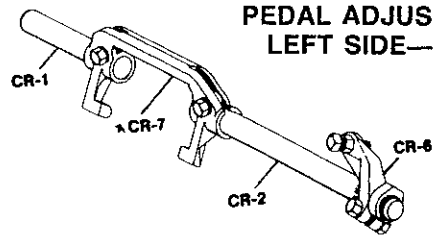
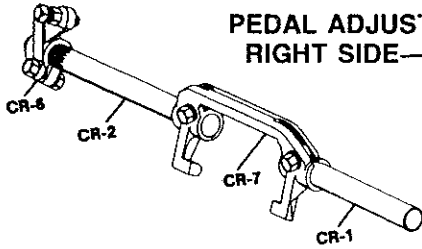
PARTS LISTED IN THIS CATALOG MAY NO LONGER BE AVAILABLE, USE WITH TRANSMISSION SUPERSEDING LIST.



| Ref. No. | Part Number | Part Description | 40-17-1-12X | 40-17-3-2X | 40-17-3-5X |
|----------|----------------------|---|-------------|------------|------------|
| | See Tab Bills | Shift lever and dome assembly | 1 | 1 | 1 |
| P-1 | 39Q-27 | Handle—shift lever | 1 | 1 | 1 |
| P-2 | 286-SP | Pin—shift lever collar | 1 | 1 | 1 |
| P-3 | 55Q-7 | Collar—compression | 1 | 1 | 1 |
| P-4 | 56Q-25 | Spring—compression | 1 | 1 | 1 |
| P-5 | 54Q-13 | Cup—compression | 1 | 1 | 1 |
| P-6 | 69Q-6 | Washer—compression | 1 | 1 | 1 |
| P-7 | 54Q-20 | Insert—dome | 1 | 1 | 1 |
| P-8 | 30-463-9 | “O” ring—dome seal | 1 | 1 | 1 |
| P-9 | 25Q-1701-20 | Shift lever—straight (30" length) | 1 | — | — |
| | 25Q-1701-49 | Shift lever—straight (33" length) | — | 1 | — |
| | 25Q-2461 | Shift lever—lower end (RVI) | — | — | 1 |
| P-10 | 53Q-15 | Shaft—rock | 1 | 1 | 1 |
| P-11 | 40-17-1 | Dome—shift lever (overall height 2") | 1 | — | 1 |
| | 40-17-3 | Dome—shift lever (overall height 3.31") | 1 | 1 | — |
| P-12 | 545028 | Bolt—shift tower ($\frac{7}{16}$ "-14 x 1 $\frac{1}{4}$ ") (not included in assembly) | 4 | 4 | 4 |

PARTS LISTED IN THIS CATALOG MAY NO LONGER BE AVAILABLE, USE WITH TRANSMISSION SUPERSEDING LIST.

MODEL ES42-5 CLUTCH RELEASE CODE TABLE

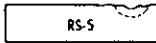


CR-1 SHORT SHAFT

| Part No. | Length |
|-----------|--------|
| 106C-1071 | 4.062" |
| 106C-1141 | 5.125" |
| 106C-1142 | 6.125" |
| 106C-1185 | 5.750" |
| 106C-1216 | 4.750" |
| 106C-1278 | 4.812" |
| 106C-1360 | 5.312" |
| 106C-1375 | 6.781" |
| 106C-1498 | 6.500" |
| 106C-1544 | 7.000" |
| 330601-1 | 6.250" |

CR-2 LONG SHAFT (Cont'd)

| Part No. | Type | Length |
|-----------|------|---------|
| 106C-1083 | RS-8 | 7.969" |
| 106C-1094 | RS-8 | 8.469" |
| 106C-1123 | RS-8 | 12.968" |
| 106C-1169 | RS-8 | 9.125" |
| 106C-1315 | RS-8 | 7.625" |
| 106C-1367 | RS-8 | 10.312" |
| 106C-1375 | RS-8 | 6.781" |
| 106C-1417 | RS-8 | 7.250" |
| 106C-1422 | RS-8 | 7.500" |
| 106C-1490 | RS-8 | 16.000" |
| 106C-1515 | RS-5 | 11.375" |
| 106C-1529 | RS-5 | 8.312" |
| 330610-5 | RS-8 | 9.469" |
| 330610-11 | RS-8 | 10.750" |
| 46-510-9 | RS-5 | 7.125" |
| 330610-10 | RS-8 | 9.500" |



CR-2 LONG SHAFT

| Part No. | Type | Length |
|-----------|------|---------|
| 106C-438 | RS-5 | 14.000" |
| 106C-588 | RS-5 | 7.000" |
| 106C-617 | RS-8 | 10.469" |
| 106C-839 | RS-8 | 11.469" |
| 106C-939 | RS-8 | 10.000" |
| 106C-953 | RS-8 | 9.750" |
| 106C-959 | RS-8 | 11.968" |
| 106C-960 | RS-8 | 8.719" |
| 106C-1046 | RS-8 | 8.968" |
| 106C-1047 | RS-8 | 9.469" |

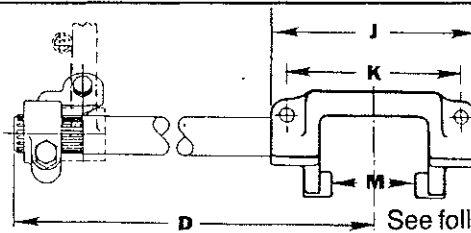
CR-6 PEDAL ADJ. ARM

| | |
|--------------|---------------------|
| 310233X | For Left Side Mtg. |
| 310473X | For Right Side Mtg. |
| 47-526-1-1X* | Lever Type 7 1/4" |
| 310873X* | Lever Type 7 1/4" |

*Lever type can be used on either right or left side.

THRU SHAFT (used with Push Type Clutch)

| Part No. | Type | Length |
|-----------|---------|---------|
| 106C-1566 | Splined | 19.125" |
| 106C-1550 | Keyed | 16.375" |
| 106C-1558 | Keyed | 19.000" |
| 106C-1578 | Splined | 19.500" |
| 49-510-1 | Keyed | 19.120" |
| 97-510-2 | Splined | 19.313" |



See following page for "D" dimensions.

CLUTCH RELEASE YOKES

| CR-7 | Forging No. | Used With | Type | J | K | M |
|-----------------------|-------------|-------------------|------|--------|--------|--------|
| 105C-64 | F105C64 | Spicer 15 1/2" SP | Pull | 8.000" | 6.500" | 4.895" |
| 105C-68 | F105C99 | Spicer 14" SP | Pull | 7.125" | 5.750" | 4.132" |
| 105C-117 ¹ | F105C118 | Spicer & Others | Push | 8.375" | 7.000" | 4.885" |
| 105C-124 ² | F105C125 | Spicer AL & AR | Push | 3.750" | 2.125" | 2.885" |
| 105C-132 ² | F105C118 | Spicer & Others | Push | 8.375" | 7.000" | 4.885" |
| 105C-137 | F105C138 | Spicer 13" and | Pull | 8.000" | 6.500" | 4.895" |
| | C105C138 | 14" 2P | | | | |
| 85-509-3 ³ | F105C118 | Spicer & Others | Push | 8.375" | 7.000" | 4.885" |

¹Machined washer surface on yoke front
²Machined washer surface on yoke rear (for clearance)
³Same as ¹ above except contains spring holes in lugs
 ■ Use 7743X Clutch Release Bearing and (2) 2306-12 Springs.

★ CLUTCH RELEASE YOKE ATTACHING PARTS—
 Use one KEY 10-30, two SCREWS 330231 and two LOCK WASHERS 500356-12
 NOTE: When changing from a two plate to single plate clutch or vice versa, a different bearing cap will be required.



MODEL ES42-5

CLUTCH RELEASE CODE TABLE

T210-ES42-5

| Rel.Code See b Bill | CR-7 Yoke ★ | Shaft | | Adjustable Arm | D Dim. (In.) | Rel.Code See Tab Bill | CR-7 Yoke ★ | Shaft | | Adjustable Arm | D Dim. (In.) |
|---------------------------|----------------|------------|-----------|-------------------|--------------------|-----------------------------|----------------|------------|-----------|-------------------|--------------------|
| | | CR-1 Short | CR-2 Long | | | | | CR-1 Short | CR-2 Long | | |
| 1 | 105C-64 | 106C-1142 | 106C-1047 | 310233X | 11.969 | 60 | 105C-137 | 106C-1185 | 106C-617 | 310233X | 12.969 |
| 2 | 105C-64 | 106C-1185 | 106C-438 | — | 16.500 | 61 | 105C-137 | 106C-1185 | 106C-839 | 310233X | 13.969 |
| 3 | 105C-64 | 106C-1185 | 106C-939 | 310233X | 12.500 | 62 | 105C-137 | 106C-1185 | 106C-939 | 310233X | 12.500 |
| 4 | 105C-64 | 106C-1185 | 106C-1046 | 310233X | 11.468 | 63 | 105C-137 | 106C-1185 | 106C-939 | 310473X | 12.500 |
| 5 | 105C-64 | 106C-1185 | 106C-1047 | 310233X | 11.969 | 64 | 105C-137 | 106C-1185 | 106C-953 | 310473X | 12.250 |
| 6 | 105C-64 | 106C-1185 | 106C-1047 | 47-526-1-1X | 11.969 | 65 | 105C-137 | 106C-1185 | 106C-1046 | 310233X | 11.468 |
| 7 | 105C-64 | 106C-1544 | 106C-839 | 310233X | 13.969 | 66 | 105C-137 | 106C-1185 | 106C-1046 | 310473X | 11.468 |
| 8 | 105C-68 | 106C-1142 | 106C-438 | — | 16.125 | 67 | 105C-137 | 106C-1185 | 106C-1047 | 310233X | 11.969 |
| 9 | 105C-68 | 106C-1142 | 106C-617 | — | 12.594 | 68 | 105C-137 | 106C-1185 | 106C-1083 | 310233X | 10.469 |
| 10 | 105C-68 | 106C-1142 | 106C-617 | 310233X | 12.594 | 69 | 105C-137 | 106C-1185 | 106C-1094 | — | 10.969 |
| 11 | 105C-68 | 106C-1142 | 106C-839 | 310233X | 13.594 | 70 | 105C-137 | 106C-1185 | 106C-1094 | 310233X | 10.969 |
| 12 | 105C-68 | 106C-1142 | 106C-939 | 310233X | 12.125 | 71 | 105C-137 | 106C-1185 | 106C-1123 | — | 15.468 |
| 13 | 105C-68 | 106C-1142 | 106C-1046 | 310233X | 11.093 | 72 | 105C-137 | 106C-1185 | 106C-1123 | 310233X | 15.468 |
| 14 | 105C-68 | 106C-1142 | 106C-1047 | 310233X | 11.594 | 73 | 105C-137 | 106C-1185 | 106C-1367 | — | 12.812 |
| 15 | 105C-68 | 106C-1278 | 106C-438 | — | 16.125 | 74 | 105C-137 | 106C-1185 | 106C-1367 | 310233X | 12.812 |
| 15A | 105C-68 | 106C-1278 | 106C-939 | 310473X | 12.125 | 75 | 105C-137 | 106C-1185 | 106C-1375 | 310873X | 9.281 |
| 15B | 105C-68 | 106C-1278 | 106C-939 | 310233X | 12.125 | 76 | 105C-137 | 106C-1185 | 106C-1515 | — | 13.875 |
| 16 | 105C-117 | 106C-1071 | 106C-939 | 310233X | 12.750 | 77 | 105C-137 | 106C-1185 | 106C-1529 | — | 10.812 |
| 17 | 105C-117 | 106C-1071 | 106C-1094 | 310233X | 11.219 | 78 | 105C-137 | 106C-1185 | 330610-5 | — | 11.969 |
| 18 | 105C-117 | 106C-1142 | 106C-939 | 310233X | 12.750 | 78A | 105C-137 | 106C-1185 | 46-510-9 | — | 9.625 |
| 19 | 105C-117 | 106C-1185 | 106C-438 | — | 16.750 | 79 | 105C-137 | 106C-1216 | 106C-617 | 310233X | 12.969 |
| 20 | 105C-117 | 106C-1185 | 106C-617 | 310233X | 13.219 | 80 | 105C-137 | 106C-1278 | 106C-438 | — | 16.500 |
| 21 | 105C-117 | 106C-1185 | 106C-839 | 47-526-1-1X | 14.219 | 81 | 105C-137 | 106C-1278 | 106C-588 | — | 9.500 |
| 22 | 105C-117 | 106C-1185 | 106C-939 | 310233X | 12.750 | 82 | 105C-137 | 106C-1278 | 106C-588 | 310233X | 9.500 |
| 23 | 105C-117 | 106C-1185 | 106C-953 | 310873X | 12.500 | 83 | 105C-137 | 106C-1278 | 106C-617 | 310233X | 12.969 |
| 24 | 105C-117 | 106C-1185 | 106C-960 | 310233X | 11.469 | 84 | 105C-137 | 106C-1278 | 106C-939 | 310233X | 12.500 |
| 25 | 105C-117 | 106C-1185 | 106C-1046 | 310233X | 11.718 | 84A | 105C-137 | 106C-1278 | 106C-939 | 310473X | 12.500 |
| 26 | 105C-117 | 106C-1185 | 106C-1047 | 310233X | 12.219 | 85 | 105C-137 | 106C-1278 | 106C-939 | 310873X | 12.500 |
| 27 | 105C-117 | 106C-1185 | 106C-1083 | — | 10.719 | 86 | 105C-137 | 106C-1278 | 106C-960 | 310233X | 11.219 |
| 28 | 105C-117 | 106C-1185 | 106C-1083 | 310233X | 10.719 | 87 | 105C-137 | 106C-1278 | 106C-1046 | — | 11.468 |
| 29 | 105C-117 | 106C-1185 | 106C-1083 | 310473X | 10.719 | 88 | 105C-137 | 106C-1278 | 106C-1046 | 310233X | 11.468 |
| 30 | 105C-117 | 106C-1185 | 106C-1094 | 310233X | 11.219 | 89 | 105C-137 | 106C-1278 | 106C-1047 | — | 11.969 |
| 31 | 105C-117 | 106C-1185 | 106C-1094 | 310873X | 11.219 | 90 | 105C-137 | 106C-1278 | 106C-1047 | 310233X | 11.969 |
| 32 | 105C-117 | 106C-1185 | 106C-1169 | 310233X | 11.875 | 91 | 105C-137 | 106C-1278 | 106C-1083 | 310233X | 10.469 |
| 33 | 105C-117 | 106C-1185 | 106C-1315 | — | 10.375 | 91A | 105C-137 | 106C-1278 | 106C-1083 | 310473X | 10.469 |
| 34 | 105C-117 | 106C-1185 | 106C-1315 | 310233X | 10.375 | 92 | 105C-137 | 106C-1278 | 106C-1094 | 310233X | 10.969 |
| 35 | 105C-117 | 106C-1185 | 106C-1315 | 47-526-1-1X | 10.375 | 92A | 105C-137 | 106C-1278 | 106C-1315 | 310233X | 10.125 |
| 35A | 105C-117 | 106C-1185 | 106C-1375 | 310873X | 9.531 | 93 | 105C-137 | 106C-1278 | 106C-1375 | 310233X | 9.281 |
| 36 | 105C-117 | 106C-1185 | 106C-1417 | 310233X | 10.000 | 94 | 105C-137 | 106C-1278 | 106C-1422 | 310233X | 10.000 |
| 37 | 105C-117 | 106C-1185 | 106C-1417 | 310873X | 10.000 | 95 | 105C-137 | 106C-1278 | 106C-1529 | — | 10.812 |
| 38 | 105C-117 | 106C-1185 | 106C-1490 | 310233X | 18.750 | 96 | 105C-137 | 106C-1360 | 106C-1083 | — | 10.469 |
| 39 | 105C-117 | 106C-1278 | 106C-939 | 310233X | 12.750 | 96A | 105C-137 | 106C-1360 | 106C-1417 | 310233X | 9.750 |
| 40 | 105C-117 | 106C-1278 | 106C-960 | 310873X | 11.469 | 97 | 105C-137 | 106C-1360 | 106C-1422 | 310233X | 10.000 |
| 41 | 105C-117 | 106C-1278 | 106C-1047 | 310233X | 12.219 | 98 | 105C-137 | 106C-1375 | 106C-438 | 310233X | 16.500 |
| 42 | 105C-117 | 106C-1278 | 106C-1094 | 310233X | 11.219 | 99 | 105C-137 | 106C-1498 | 106C-438 | — | 16.500 |
| 43 | 105C-117 | 106C-1278 | 106C-1315 | 310233X | 10.375 | 100 | 105C-137 | 106C-1498 | 106C-617 | 310233X | 12.969 |
| 44 | 105C-117 | 106C-1278 | 106C-1367 | 310233X | 13.062 | 101 | 105C-137 | 106C-1498 | 106C-617 | 310473X | 12.969 |
| 45 | 105C-117 | 106C-1360 | 106C-1083 | 310233X | 10.719 | 102 | 105C-137 | 106C-1498 | 106C-939 | 310233X | 12.500 |
| 46 | 105C-117 | 106C-1360 | 106C-1315 | 310233X | 10.375 | 103 | 105C-137 | 106C-1498 | 106C-939 | 310473X | 12.500 |
| 46A | 105C-117 | 106C-1360 | 330610-10 | — | 12.250 | 104 | 105C-137 | 106C-1498 | 106C-953 | 310233X | 12.250 |
| 47 | 105C-117 | Thru Shaft | 106C-1550 | — | — | 105 | 105C-137 | 106C-1498 | 106C-959 | 310233X | 14.468 |
| 48 | 105C-117 | Thru Shaft | 106C-1558 | — | — | 106 | 105C-137 | 106C-1498 | 106C-1046 | 310233X | 11.468 |
| 49 | 105C-124 | 106C-1185 | 106C-438 | — | 14.313 | 107 | 105C-137 | 106C-1498 | 106C-1047 | — | 11.969 |
| 50 | 105C-124 | Thru Shaft | 106C-1566 | 310233X | — | 108 | 105C-137 | 106C-1498 | 106C-1047 | 310233X | 11.969 |
| 51 | 105C-124 | Thru Shaft | 106C-1566 | 310473X | — | 109 | 105C-137 | 106C-1498 | 106C-1083 | 310233X | 10.469 |
| 52 | 105C-124 | Thru Shaft | 106C-1566 | 310873X | — | 110 | 105C-137 | 106C-1498 | 106C-1094 | — | 10.969 |
| 52A | 105C-124 | Thru Shaft | 49-510-1 | 310233X | — | 111 | 105C-137 | 106C-1498 | 330610-11 | 310233X | 13.250 |
| 53 | 105C-132 | 106C-1185 | 106C-1047 | 310233X | 9.782 | 112 | 105C-137 | 330601-1 | 106C-939 | 310233X | 12.500 |
| 54 | 105C-132 | 106C-1185 | 106C-1083 | 310233X | 8.282 | 112A | 85-509-3 | 106C-1278 | 106C-939 | 310233X | 12.750 |
| 55 | 105C-132 | 106C-1185 | 106C-1417 | 310873X | 7.563 | 113 | 85-509-3 | 106C-1360 | 106C-1417 | 310233X | 10.000 |
| 56 | 105C-132 | 106C-1185 | 46-510-9 | — | 7.438 | 114 | 85-509-3 | Thru Shaft | 106C-1578 | 310233X | — |
| 57 | 105C-132 | 106C-1278 | 46-510-9 | — | 7.438 | 114A | 85-509-3 | Thru Shaft | 106C-1578 | 310473X | — |
| 58 | 105C-137 | 106C-1141 | 106C-1169 | 310233X | 11.625 | 115 | 85-509-3 | Thru Shaft | 106C-1578 | 310873X | — |
| 59 | 105C-137 | 106C-1185 | 106C-438 | — | 16.500 | 116 | 312916 | Thru Shaft | 97-510-2 | — | — |

■ Use 7743X Clutch Release Bearing and (2) 2306-12 Springs.

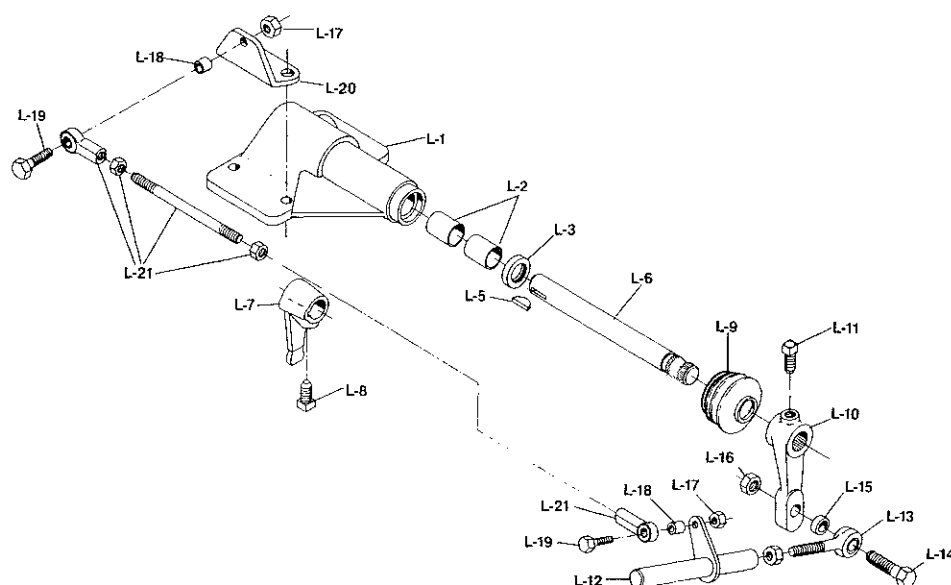
MODEL ES42-5

SPICER®



T210-ES42-5

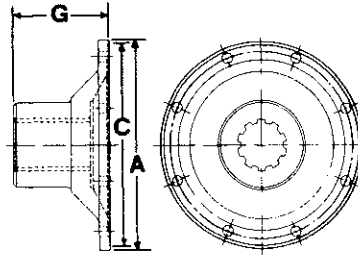
REMOTE CONTROL ASSEMBLY



| Ref. No. | Part Number | Part Description | 40-18-1-2X | 40-18-1-3X | 40-18-1-6X |
|----------|----------------------|--|------------|------------|------------|
| | See Tab Bills | Remote control assembly | 1 | 1 | 1 |
| | 40-18-1-1X | Remote control cover assembly | 1 | 1 | 1 |
| L-1 | N.S.S. | Remote control cover | 2 | 2 | 2 |
| L-2 | 40-24-1 | Bushing—remote control cover | 1 | 1 | 1 |
| L-3 | 28P-19 | Seal—remote control rod | 1 | 1 | 1 |
| L-4 | 40-65-1-1X | Inner shifter shaft, finger and key | 1 | 1 | 1 |
| L-5 | 50007-19 | Key—shifter bracket | 1 | 1 | 1 |
| L-6 | 40-65-1 | Shaft—remote control | 1 | 1 | 1 |
| L-7 | 40-6-1 | Finger—shifter | 1 | 1 | 1 |
| L-8 | 545004-1 | Set screw— $\frac{7}{16}$ "-20 x.72" square head . . . | 1 | 1 | 1 |
| L-9 | 97-483-3 | Boot—shifter rod | 1 | 1 | 1 |
| N.S. | LW-3-9 | Lockwire | 1 | 1 | 1 |
| L-10 | 40-6-3 | Control lever | 1 | — | 1 |
| or | 40-6-5 | Control lever | — | 1 | — |
| L-11 | 500550-7 | Set screw— $\frac{7}{16}$ "-14 x $\frac{7}{8}$ " square head | 1 | 1 | 1 |
| L-12 | 40-65-3-1X | Shift rod | 1 | 1 | — |
| L-13 | 330938 | Rod end | 1 | 1 | — |
| L-14 | 545001-2 | Bolt—control lever ($\frac{1}{2}$ "-13 x $2\frac{1}{4}$ " hex head) . . | 1 | 1 | — |
| L-15 | 40-38-2 | Spacer—control lever bolt | 1 | 1 | — |
| L-16 | 500370-5 | Nut—control lever and rod end ($\frac{1}{2}$ "-13 hex) . . | 1 | 1 | — |
| L-17 | 500370-3 | Nut—tie rod assy. mounting bolt ($\frac{3}{8}$ "-16 hex) . | 2 | 2 | — |
| L-18 | 40-38-3 | Spacer—tie rod assembly mounting bolt | 2 | 2 | — |
| L-19 | 545002-7 | Bolt—tie rod assy. ($\frac{3}{8}$ "-16 x $1\frac{1}{2}$ " hex head) . . | 2 | 2 | — |
| L-20 | 40-354-3 | Bracket—tie rod | 1 | 1 | — |
| L-21 | 40-65-2-1X | Tie rod assembly | 1 | 1 | — |

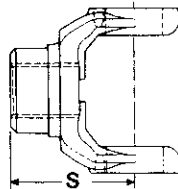
N.S.S.—Not Sold Separately

PARTS LISTED IN THIS CATALOG MAY NO LONGER BE AVAILABLE, USE WITH TRANSMISSION SUPERSEDING LIST.

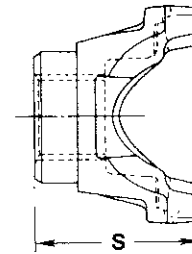


COMPANION FLANGE

| Companion Flanges | | | | | | |
|-------------------|-------------------------|---|---------------------------------|---|---|-----------------|
| Joint Series | A Flange Diameter | Part No. Companion Flange Assembly | Part No. Companion Flange | G End of Hub to Flange Face Length | C Pilot Diameter F-Female M-Male | Brake Size |
| 1480/1550 | Rectangular | — | 53-106-2 | 27/8" | F-33/4" | 9 x 3 or 12 x 4 |



FULL ROUND



U-BOLT—BRG. STRAP—HALF ROUND

| Series | Yoke Style | End Yoke Part Number | S End of Hub To Center Line Length | Momentary Joint Angle | Brake Size |
|--------|--------------|-------------------------|--|--------------------------|------------|
| 1480 | U-Bolt | 3-4-8781 | 41 1/64" | 22 1/2° | — |
| 1480 | Brg. Strap** | 3-4-8931-2 | 32 9/32" | 23 1/2° | — |
| 1550 | U-Bolt | 4-4-4491 | 41 1/64" | 21 1/2° | — |
| 1550 | Brg. Strap* | 4-4-4491-1 | 41 1/64" | 21 1/2° | — |
| 1550 | Brg. Strap** | 4-4-4491-2 | 41 1/64" | 21 1/2° | — |
| 1550 | U-Bolt | 4-4-4601 | 62 7/64" | 22° | 12 x 4 |
| 1550 | U-Bolt | 4-4-4611 | 41 1/64" | 22 1/2° | — |
| 1550 | Brg. Strap* | 4-4-4611-1 | 41 1/64" | 22 1/2° | — |
| 1550 | Brg. Strap** | 4-4-4611-2 | 41 1/64" | 22 1/2° | — |
| 1550 | Half Rnd. | (A) 4-4-6111-1X | 71 3/32" | 22° | 12 x 4 |
| 1610 | Full Rnd. | 5-4-6321 | 4" | 19° | — |
| 1610 | Half Rnd. | 5-4-6321-1 | 4" | 19° | — |
| 1610 | Full Rnd. | 5-4-6481 | 41 1/64" | 22 1/2° | — |
| 1610 | Half Rnd. | 5-4-6481-1 | 41 1/64" | 22 1/2° | — |
| 1610 | Full Rnd. | 5-4-6491 | 62 1/32" | 22° | 12 x 4 |
| 1610 | Half Rnd. | (A) 5-4-7611-1X | 79 1/16" | 22° | 12 x 4 |
| 1710 | Full Rnd. | 6-4-7301 | 5 1/4" | 33 1/2° | — |
| 1710 | Half Rnd. | 6-4-7301-1 | 5 1/4" | 33 1/2° | — |

(A) Assembly Includes Brake Drum
*With Tapped Holes
**With Thru Holes

MODEL ES42-5

OVERHAUL KITS

SPICER®



T210-ES42-5

| Part Number | Part Description | Qty. |
|---|--|------|
| MAJOR OVERHAUL KIT | | |
| 313400-77X | MAJOR OVERHAUL KIT | 1 |
| 501200 | Nut—mainshaft output | 1 |
| 313401-27X | Thrust washer kit | 1 |
| 313429-7X | Shifter housing small parts kit | 1 |
| 313432-34X | Minor overhaul kit | 1 |
| MINOR OVERHAUL KIT (Included in Major Overhaul Kit) | | |
| 313432-34X | MINOR OVERHAUL KIT | 1 |
| BEARINGS | | |
| 550986 | Mainshaft pocket | 1 |
| 550989 | Mainshaft rear cone | 1 |
| 550988 | Drive gear front | 2 |
| 550963 | Mainshaft 1st and reverse | 2 |
| 550886 | Reverse idler gear | 1 |
| 550964 | Countershaft front—cone | 1 |
| 550965 | Countershaft front—cup | 1 |
| 550966 | Countershaft rear—cone | 1 |
| 550967 | Countershaft rear—cup | 1 |
| 550968 | Mainshaft 2nd needle | 1 |
| 313661X | Kit—bearing needle 3rd speed | 1 |
| 313662X | Kit—bearing needle 4th speed & spacer | 1 |
| 40-486-1 | Clip—shift fork (2nd & 3rd):(4th & 5th) | 4 |
| 49-486-3 | Clip—shift fork (1st & reverse) | 2 |
| 49-468-2 | Ring—oil | 1 |
| 40-463-4-1X | Seal—drive gear (flat type) | 1 |
| 40-463-6-1X | Seal—drive gear (stem type) | 1 |
| 63-463-1 | Seal—mainshaft rear | 1 |
| 545077 | #2 moly grease (packet) | 1 |
| 545080-1 | Locite—threadlock adhesive (vail) | 1 |
| 312475-40X | Gasket kit | 1 |
| 313438-1X | Shim kit—countershaft rear | 1 |
| 313024-14X | Snap ring—kit | 1 |
| 2363 | Service manual | 1 |
| 2770 | Bulletin—bearing lube instruction | 1 |
| 2783 | Bulletin—locite apl. for mainshaft nut | 1 |
| (Included in Major Overhaul Kit) | | |
| 313401-27X | THRUST WASHER KIT | 1 |
| 974-W | Reverse idler | 2 |
| 40-47-3 | Mainshaft—3rd & 4th speed | 1 |
| 49-47-3 | Mainshaft—reverse | 1 |
| 545087 | Pin—lock | 2 |
| 40-47-2 | Washer—1st & 2nd speed | 1 |
| 313429-7X | SHIFTER HOUSING SMALL PARTS | 1 |
| 40-80-1 | Poppet ball (BSSN J880705001) | 3 |
| 101-438-4 | Poppet plunger (ASSN J880705001) | 3 |
| 40-487-1 | Insert—poppet spring and ball | 3 |
| 40-438-1 | Pin—1st & reverse select plunger | 1 |
| 97-72-23 | Spring—shift bar poppet | 3 |
| 62-72-8 | Spring—1st & reverse shift finger plunger | 1 |
| 2823 | Bulletin—shift bar assemblies and poppet plunger | 1 |

BSSN—Before Starting Serial Number
 ASSN—After Starting Serial Number

PARTS LISTED IN THIS CATALOG MAY NO LONGER BE AVAILABLE, USE WITH TRANSMISSION SUPERSEDING LIST.

MODEL ES42-5

OVERHAUL KITS

T210-ES42-5

| Part Number | Part Description | Qty. |
|--------------------|--|------|
| | (Included in MAJOR and MINOR OVERHAUL KIT) | |
| 312475-40X | GASKET KIT | 1 |
| 40-223-1 | Mainshaft rear bearing cap | 1 |
| 40-223-3 | Mainshaft rear bearing cap (D.C.M. brake) | 1 |
| 97-324-1-1X | PTO aperture cover | 2 |
| 49-324-1-1X | Reverse idler cover | 1 |
| 40-155-1 | Tower | 1 |
| 545056-9 | Anaerobic sealant | 1 |
| 2792 | Bulletin—liquid gasket | 1 |
| 313024-14X | SNAP RING KIT | 1 |
| 40-381-2 | Mainshaft 3rd & 4th thrust washer | 1 |
| 40-381-3 | Countershaft head end gear | 1 |
| 40-381-3 | Mainshaft 2nd & 3rd clutch gear | 1 |
| 40-381-4 | Mainshaft 1st & 2nd thrust washer | 1 |
| 40-381-5 | Countershaft 4th gear | 1 |
| 46-381-1 | Mainshaft front bearing | 1 |
| 40-381-1 | 4th & 5th clutch gear | 1 |
| 40-381-6 | Drive gear pocket bearing | 1 |
| 2811 | Bulletin—2nd speed bearing overhaul | 1 |
| 2807 | Bulletin—drive gear replacement | 1 |
| 313438-1X | SHIM KIT | 1 |
| 40-228-1-3 | Countershaft rear bearing (.0165/.0135) | 1 |
| 40-228-1-2 | Countershaft rear bearing (.1110/.0090) | 1 |
| 40-228-1-1 | Countershaft rear bearing (.005/.0045) | 1 |
| 2793 | Bulletin—countershaft shim kit | 1 |
| 40-463-4-1X | SUB-ASSEMBLY—OIL SEAL & INST. SL (FLAT CAP) | 1 |
| 2819 | Bulletin—oil seal inst. instruction | 1 |
| 40-463-4 | Seal—drive gear bearing cap | 1 |
| 40-420-1 | Sleeve—oil seal inst. (1.75 dia. shaft) | 1 |
| 40-463-6-1X | SUB-ASSEMBLY—OIL SEAL & INST. SL (STEM CAP) | 1 |
| 2819 | Bulletin—oil seal inst. instruction | 1 |
| 40-463-6 | Seal—drive gearing bearing cap | 1 |
| 40-420-2 | Sleeve—oil seal inst. (1.500 dia.) | 1 |
| 40-420-3 | Sleeve—oil seal inst. (1.375 dia.) | 1 |
| 97-324-1-1X | KIT—GASKET 6 BOLT PTO | 1 |
| 97-324-1 | Gasket—PTO aperture cover | 1 |
| 330950 | Tag—instruction (service gaskets) | 1 |
| 49-324-1-1X | KIT—GASKET—REVERSE IDLER COVER | 1 |
| 49-324-1 | Gasket—reverse idler cover | 1 |
| 330950 | Tag—instruction (service gaskets) | 1 |
| 313661X | KIT—BEARING NEEDLE 3RD SPEED | 1 |
| 550987 | Bearing—needle roller | 2 |
| 313662X | KIT—BEARING NEEDLE 4TH SPEED & SPACER | 1 |
| 551001 | Bearing—mainshaft 4th needle | 2 |
| 40-37-2 | Spacer—mainshaft 4th needle bearing | 1 |

MODEL ES42-5

SPICER®



T210-ES42-5

TABULATED BILLS OF MATERIAL

| Tab No. | Used By | For Use With Clutch 13" and 14" Single or 2PL | CLUTCH HOUSING | | | Main Drive Gear A-11 | Drive Gear Bearing Cap F-1 | Case Assembly G-1 |
|----------------------|-------------------------------|---|----------------|-------------------------------------|------------------|----------------------|----------------------------|-------------------|
| | | | S A E | Assembly No. | Rel. Code Page17 | | | |
| Model ES42-5A | | | | | | | | |
| 801438 | | | | | | | | |
| -1 | Never released for production | | | | | | | |
| -2 | Never released for production | | | | | | | |
| -3 | Never released for production | | | | | | | |
| -4 | Never released for production | | | | | | | |
| -5 | Fabrication | Push Type | 2 | 49-518-4-2X | 52 | 40-35-18-1X | 40-19-24-1X | 40-15-6-1X |
| -6 | Spicer Australia | Pull Type | 2 | 49-518-5-2X | — | 40-35-21-1X | 40-19-40-1X | 40-15-6-1X |
| -7 | Tree Farmer | Push Type | 3 | { 46-518-21-1X } { 49-360-3-1X } | — | 40-35-18-1X | 40-19-29-1X | 40-15-6-1X |
| -8 | Corbas France | Push Type | 2 | 49-518-6-1X | — | 40-35-19-1X | 40-19-32-1X | 40-15-6-1X |
| -9 | Navistar | Push Type | 2 | 49-518-5-2X | — | 40-35-18-1X | 40-19-35-1X | 40-15-9-1X |
| -10 | Ardco Ind. | Push Type | 2 | 49-518-4-2X | — | 40-35-18-1X | 40-19-24-1X | 40-15-6-1X |
| -11 | Never released for production | | | | | | | |
| -12 | Ford | Push Type | 2 | 49-518-4-2X | — | 40-35-18-1X | 40-19-1-1X | 40-15-6-1X |
| -13 | Ford | Push Type | — | 49-360-3-1X | — | 40-35-17-1X | 40-19-3-1X | 40-15-6-1X |
| -14 | Ford | Pull Type | 2 | 49-518-4-2X | — | 40-35-21-1X | 40-19-40-1X | 40-15-6-1X |
| -15 | General | Pull Type | 2 | 49-518-4-2X | — | 40-35-21-1X | 40-19-40-1X | 40-15-6-1X |
| -16 | Litton Resource | Push Type | 2 | 49-518-5-2X | 50 | 40-35-18-1X | 40-19-24-1X | 40-15-6-1X |
| -17 | Spicer U.K. | Push Type | — | 49-360-3-1X | — | 40-35-17-1X | 40-19-3-1X | 40-15-6-1X |
| -18 | Corbas France | Push Type | 2 | 49-518-6-1X | — | 40-35-19-1X | 40-19-32-1X | 40-15-6-1X |
| -19 | Corbas France | Push Type | 2 | 49-518-6-1X | — | 40-35-19-1X | 40-19-32-1X | 40-15-6-1X |
| -20 | Navistar | Push Type | 2 | 49-518-5-2X | — | 40-35-18-1X | 40-19-35-1X | 40-15-9-1X |
| -21 | Ford | Push Type | — | 49-360-3-1X | — | 40-35-17-1X | 40-19-3-1X | 40-15-6-1X |
| -22 | Ford | Push Type | — | 49-360-3-1X | — | 40-35-17-1X | 40-19-3-1X | 40-15-6-1X |
| -23 | Ford | Push Type | — | 49-360-3-1X | — | 40-35-17-1X | 40-19-3-1X | 40-15-6-1X |
| -24 | Ford | Push Type | 2 | 49-518-4-2X | — | 40-35-18-1X | 40-19-1-1X | 40-15-6-1X |
| -25 | Ford | Push Type | 2 | 49-518-4-2X | — | 40-35-18-1X | 40-19-1-1X | 40-15-6-1X |
| -26 | GMC | Push Type | — | 49-360-4-1X | — | 40-35-20-1X | 40-19-6-1X | 40-15-8-1X |
| -27 | Navistar | Push Type | 2 | 49-518-5-2X | — | 40-35-18-1X | 40-19-35-1X | 40-15-9-1X |
| -28 | Cummins | Push Type | 3 | { 46-518-21-1X } { 49-360-3-1X } | 35 | 40-35-18-1X | 40-19-30-1X | 40-15-6-1X |
| -29 | Ford | Pull Type | 2 | 49-518-4-2X | — | 40-35-21-1X | 40-19-40-1X | 40-15-6-1X |
| -30 | Ford | Pull Type | 2 | 49-518-4-2X | — | 40-35-21-1X | 40-19-40-1X | 40-15-6-1X |
| -31 | Cummins | Push Type | 3 | 46-518-21-1X 49-360-3-1X | 50 | 40-35-18-1X | 40-19-31-1X | 40-15-6-1X |
| -32 | Cummins | Push Type | 2 | 49-518-4-2X | 50 | 40-35-18-1X | 40-19-1-1X | 40-15-6-1X |
| -33 | Navistar | Push Type | 2 | 49-518-5-2X | — | 40-35-18-1X | 40-19-35-1X | 40-15-9-1X |
| -34 | McElory Mach. | Pull Type | 2 | 49-518-5-2X | 12 | 40-35-21-1X | 40-19-40-1X | 40-15-6-1X |
| -35 | Navistar | Push Type | 2 | 49-518-5-2X | — | 40-35-18-1X | 40-19-35-1X | 40-15-9-1X |
| -36 | Bombardier | Push Type | 3 | { 46-518-21-1X } { 49-360-3-1X } | 50 | 40-35-18-1X | 40-19-31-1X | 40-15-9-1X |
| -37 | Navistar | Push Type | 2 | 49-518-5-2X | — | 40-35-18-1X | 40-19-35-1X | 40-15-9-1X |
| -38 | Cummins | Push Type | 3 | { 46-518-21-1X } { 49-360-3-1X } | 50 | 40-35-18-1X | 40-19-31-1X | 40-15-6-1X |



MODEL ES42-5

TABULATED BILLS OF MATERIAL

T210-ES42-5

| Tab No. | Rear Bearing Cap H-1 | SPEEDOMETER | | End Yoke Page 19 | SHIFTER | |
|---------|----------------------|-----------------|-----------------|------------------|-------------------------------|------------------------|
| | | Drive Gear B-24 | Driven Gear H-8 | | Lever & Dome Assembly Page 15 | Remote Control Page 18 |

Model ES42-5A (Cont'd)
301438

| | | | | | | |
|-----|-------------------------------|----------|----------|------------|-------------|------------|
| -1 | Never released for production | | | | | |
| -2 | Never released for production | | | | | |
| -3 | Never released for production | | | | | |
| -4 | Never released for production | | | | | |
| -5 | 40-19-38-2X | 53-452-3 | 62-453-4 | 4-4-4491 | — | 40-18-1-2X |
| -6 | 40-19-38-2X | 53-452-4 | 53-453-2 | 4-4-4491-1 | — | 40-18-1-2X |
| -7 | 40-19-38-2X | — | — | 3-4-8781 | — | — |
| -8 | 40-19-38-2X | 53-452-4 | 53-453-2 | 4-4-5221 | 40-17-3-5X | — |
| -9 | 40-19-22-2X | 53-452-3 | — | — | — | — |
| -10 | 40-19-38-2X | — | — | — | 40-17-1-12X | — |
| -11 | Never released for production | | | | | |
| -12 | 40-19-39-1X | — | — | — | — | — |
| -13 | 40-19-39-1X | — | — | — | — | — |
| -14 | 40-19-39-1X | — | — | — | — | — |
| -15 | 40-19-39-1X | — | — | 4-4-4611 | 40-17-1-12X | — |
| -16 | 40-19-38-2X | 53-452-4 | 53-453-2 | — | 40-17-1-12X | — |
| -17 | 40-19-39-1X | 53-452-4 | 53-453-2 | 53-106-2 | — | 40-18-1-2X |
| -18 | 40-19-38-2X | 53-452-4 | 53-453-2 | 4-4-5221 | — | 40-18-1-2X |
| -19 | 40-19-19-2X | 53-452-4 | 53-453-2 | — | — | 40-18-1-2X |
| -20 | 40-19-38-2X | 53-452-3 | — | — | — | — |
| -21 | 40-19-39-1X | 53-452-6 | — | 4-4-4611-2 | — | — |
| -22 | 40-19-39-1X | 53-452-6 | — | 3-4-8931-2 | — | — |
| -23 | 40-19-39-1X | 53-452-6 | — | 5-4-6481-1 | — | — |
| -24 | 40-19-39-1X | 53-452-6 | — | 4-4-4611-2 | — | — |
| -25 | 40-19-39-1X | 53-452-6 | — | 5-4-6481-1 | — | — |
| -26 | 40-19-22-2X | 53-452-3 | — | — | — | — |
| -27 | 40-19-19-2X | 53-452-3 | — | — | — | — |
| -28 | 40-19-38-2X | 53-452-4 | 53-453-2 | 3-4-8781 | 40-17-1-12X | — |
| -29 | 40-19-39-1X | 53-452-6 | — | 5-4-6481-1 | — | — |
| -30 | 40-19-39-1X | 53-452-6 | — | 4-4-4611-2 | — | — |
| -31 | 40-19-38-2X | 53-452-4 | 53-453-2 | 53-106-2 | — | 40-18-1-2X |
| -32 | 40-19-38-2X | 53-452-4 | 53-453-2 | 53-106-2 | — | 40-18-1-2X |
| -33 | 40-19-42-2X | 53-452-5 | — | — | — | — |
| -34 | 40-19-38-2X | — | — | 53-106-2 | — | 40-18-1-2X |
| -35 | 40-19-43-2X | 53-452-5 | — | — | — | — |
| -36 | 40-19-22-2X | — | — | 4-1-6051X | 40-17-1-2X | — |
| -37 | 40-19-42-2X | 53-452-5 | — | — | — | — |
| -38 | 40-19-38-2X | 53-452-4 | 53-453-2 | — | — | 40-18-1-2X |

MODEL ES42-5

SPICER®



T210-ES42-5

TABULATED BILLS OF MATERIAL

| Tab No. | Used By | For Use With Clutch 13" and 14" Single or 2PL | CLUTCH HOUSING | | | Main Drive Gear A-1 | Drive Gear Bearing Cap F-1 | Case Assembly G-1 |
|----------------------|-------------------------------|---|----------------|--------------|----------------------|---------------------|----------------------------|-------------------|
| | | | S A E | Assembly No. | Rel. Code Page 16 | | | |
| Model ES42-5D | | | | | | | | |
| 301439 | | | | | | | | |
| -1 | Navistar | Push Type | 2 | 49-518-5-2X | — | 40-35-18-1X | 40-19-35-1X | 40-15-9-1X |
| -2 | Ford | Push Type | 2 | 49-518-4-2X | — | 40-35-18-1X | 40-19-1-1X | 40-15-6-1X |
| -3 | Ford | Push Type | — | 49-360-3-1X | — | 40-35-17-1X | 40-19-3-1X | 40-15-6-1X |
| -4 | Navistar | Push Type | 2 | 49-518-5-2X | — | 40-35-18-1X | 40-19-35-1X | 40-15-9-1X |
| -5 | Never released for production | | | | | | | |
| -6 | Never released for production | | | | | | | |
| -7 | Never released for production | | | | | | | |
| -8 | Never released for production | | | | | | | |
| -9 | Corbas France | Push Type | 2 | 49-518-6-1X | — | 40-35-19-1X | 40-19-32-1X | 40-15-6-1X |
| -10 | GMC | Push Type | — | 49-360-4-1X | — | 40-35-20-1X | 40-19-6-1X | 40-15-8-1X |
| -11 | Ford | Push Type | 2 | 49-518-4-2X | — | 40-35-18-1X | 40-19-1-1X | 40-15-6-1X |
| -12 | Ford | Push Type | — | 49-360-3-1X | — | 40-35-17-1X | 40-19-3-1X | 40-15-6-1X |
| -13 | Ford | Pull Type | 2 | 49-518-4-2X | — | 40-35-21-1X | 40-19-40-1X | 40-15-6-1X |
| -14 | Navistar | Push Type | 2 | 49-518-5-2X | — | 40-35-18-1X | 40-19-35-1X | 40-15-9-1X |
| -15 | Corbas France | Push Type | 2 | 49-518-6-1X | — | 40-35-19-1X | 40-19-32-1X | 40-15-6-1X |
| -16 | GMC | Push Type | 2 | 49-518-7-2X | — | 40-35-19-1X | 40-19-5-1X | 40-15-8-1X |
| -17 | Dina | Push Type | 2 | 49-518-5-2X | 50 | 40-35-18-1X | 40-19-24-1X | 40-15-6-1X |
| -18 | Ford | Push Type | — | 49-360-3-1X | — | 40-35-17-1X | 40-19-3-1X | 40-15-6-1X |
| -19 | Ford | Push Type | — | 49-360-3-1X | — | 40-35-17-1X | 40-19-3-1X | 40-15-6-1X |
| -20 | Ford | Push Type | — | 49-360-3-1X | — | 40-35-17-1X | 40-19-3-1X | 40-15-6-1X |
| -21 | Ford | Push Type | 2 | 49-518-4-2X | — | 40-35-18-1X | 40-19-1-1X | 40-15-6-1X |
| -22 | Ford | Push Type | 2 | 49-518-4-2X | — | 40-35-18-1X | 40-19-1-1X | 40-15-6-1X |
| -23 | Navistar | Pull Type | 2 | 49-518-5-2X | — | 40-35-22-1X | 40-19-40-1X | 40-15-9-1X |
| -24 | Famsa | Pull Type | 2 | 49-518-5-2X | 3 | 40-35-22-1X | 40-19-40-1X | 40-15-9-1X |
| -25 | GMC | Push Type | 2 | 49-518-7-2X | — | 40-35-19-1X | 40-19-5-1X | 40-15-8-1X |
| -26 | Navistar | Pull Type | 2 | 49-518-5-2X | — | 40-35-22-1X | 40-19-40-1X | 40-15-9-1X |
| -27 | Spicer Australia | Pull Type | 2 | 49-518-5-2X | — | 40-35-21-1X | 40-19-40-1X | 40-15-6-1X |
| -28 | Navistar | Pull Type | 2 | 49-518-5-2X | — | 40-35-22-1X | 40-19-40-1X | 40-15-9-1X |
| -29 | Ford | Pull Type | 2 | 49-518-4-2X | — | 40-35-21-1X | 40-19-40-1X | 40-15-6-1X |
| -30 | Ford | Pull Type | 2 | 49-518-4-2X | — | 40-35-21-1X | 40-19-40-1X | 40-15-6-1X |
| -31 | Hino Motors | Push Type | 2 | 49-518-4-2X | 50 | 40-35-18-1X | 40-19-24-1X | 40-15-9-1X |
| -32 | Tucker | Push Type | 2 | 49-518-5-2X | 50 | 40-35-18-1X | 40-19-35-1X | 40-15-9-1X |
| -33 | TSP | Push Type | 2 | 49-518-5-2X | — | 40-35-18-1X | 40-19-35-1X | 40-15-9-1X |
| -34 | TSP | Pull Type | 2 | 49-518-5-2X | 62 | 40-35-22-1X | 40-19-40-1X | 40-15-9-1X |
| -35 | Navistar | Pull Type | 2 | 49-518-5-2X | — | 40-35-22-1X | 40-19-40-1X | 40-15-9-1X |
| -36 | Navistar | Push Type | 2 | 49-518-5-2X | — | 40-35-18-1X | 40-19-35-1X | 40-15-9-1X |
| -37 | Navistar | Push Type | 2 | 49-518-5-2X | — | 40-35-18-1X | 40-19-35-1X | 40-15-9-1X |
| -38 | Navistar | Pull Type | 2 | 49-518-5-2X | — | 40-35-22-1X | 40-19-40-1X | 40-15-9-1X |
| -39 | GMC | Push Type | — | — | — | 40-35-20-1X | 40-19-6-1X | 40-15-8-1X |
| -40 | Spicer Australia | Pull Type | 2 | 49-518-5-2X | — | 40-35-22-1X | 40-19-40-1X | 40-15-6-1X |
| -41 | TSP | Push Type | 2 | 49-518-5-2X | — | 40-35-18-1X | 40-19-35-1X | 40-15-9-1X |
| -42 | Navistar | Push Type | 2 | 49-518-5-2X | — | 40-35-17-1X | 40-19-35-1X | 40-15-9-1X |



MODEL ES42-5

TABULATED BILLS OF MATERIAL

T210-ES42-5

| Tab No. | Rear Bearing Cap H-1 | SPEEDOMETER | | End Yoke Page 19 | SHIFTER | |
|-------------------------------|-------------------------------|-----------------|-----------------|------------------|-------------------------------|------------------------|
| | | Drive Gear B-24 | Driven Gear H-8 | | Lever & Dome Assembly Page 15 | Remote Control Page 18 |
| Model ES42-5D (Cont'd) | | | | | | |
| 301439 | | | | | | |
| -1 | 40-19-22-2X | 53-452-3 | — | — | — | — |
| -2 | 40-19-39-1X | — | — | — | — | — |
| -3 | 40-19-39-1X | — | — | — | — | — |
| -4 | 40-19-38-2X | 53-452-3 | — | — | — | — |
| -5 | Never released for production | | | | | |
| -6 | Never released for production | | | | | |
| -7 | Never released for production | | | | | |
| -8 | Never released for production | | | | | |
| -9 | 40-19-38-2X | 53-452-4 | 53-453-2 | 4-4-5221 | 40-17-3-5X | — |
| -10 | 40-19-22-2X | 53-452-3 | — | — | — | — |
| -11 | 40-19-39-1X | — | — | — | — | — |
| -12 | 40-19-39-1X | — | — | — | — | — |
| -13 | 40-19-39-1X | — | — | — | — | — |
| -14 | 40-19-19-2X | 53-452-3 | — | — | — | — |
| -15 | 40-19-19-2X | 53-452-4 | 53-453-2 | — | 40-17-3-5X | — |
| -16 | 40-19-19-2X | 53-452-3 | — | — | — | — |
| -17 | 40-19-38-2X | 53-452-4 | 53-453-2 | 53-106-2 | 40-17-1-12X | — |
| -18 | 40-19-39-1X | 53-452-6 | — | 4-4-4611-2 | — | — |
| -19 | 40-19-39-1X | 53-452-6 | — | 3-4-8931-2 | — | — |
| -20 | 40-19-39-1X | 53-452-6 | — | 5-4-6481-1 | — | — |
| -21 | 40-19-39-1X | 53-452-6 | — | 4-4-4611-2 | — | — |
| -22 | 40-19-39-1X | 53-452-6 | — | 5-4-6481-1 | — | — |
| -23 | 40-19-22-2X | 53-452-3 | — | — | — | — |
| -24 | 40-19-38-2X | 53-452-3 | 62-453-4 | 53-106-2 | 40-17-1-12X | — |
| -25 | 40-19-22-2X | 53-452-3 | — | — | — | — |
| -26 | 40-19-38-2X | 53-452-3 | — | — | — | — |
| -27 | 40-19-38-2X | 53-452-4 | 53-453-2 | 4-4-4491-1 | — | 40-18-1-6X |
| -28 | 40-19-19-2X | 53-452-3 | — | — | — | — |
| -29 | 40-19-39-1X | 53-452-6 | — | 5-4-6481-1 | — | — |
| -30 | 40-19-39-1X | 53-452-6 | — | 4-4-4611-2 | — | — |
| -31 | 40-19-38-2X | 53-452-4 | 53-453-2 | 53-106-2 | — | 40-18-1-2X |
| -32 | 40-19-22-2X | — | — | — | 40-17-1-12X | — |
| -33 | 40-19-22-2X | 53-452-4 | 53-453-2 | — | — | — |
| -34 | 40-19-38-2X | 53-452-4 | 53-453-2 | — | 40-17-1-12X | — |
| -35 | 40-19-42-2X | 53-452-5 | — | — | — | — |
| -36 | 40-19-43-2X | 53-452-5 | — | — | — | — |
| -37 | 40-19-42-2X | 53-452-5 | — | — | — | — |
| -38 | 40-19-43-2X | 53-452-5 | — | — | — | — |
| -39 | 40-19-38-2X | 53-452-3 | — | — | — | — |
| -40 | 40-19-38-2X | 53-453-4 | 53-453-2 | 4-4-4491-1 | — | 40-18-1-2X |
| -41 | 40-19-43-2X | 53-452-5 | — | 53-106-2 | 40-17-1-12X | — |
| -42 | 40-19-41-2X | 53-452-5 | — | — | — | — |



14700 Helm Court
Plymouth, MI 48170
(800) 401-9866 or (734) 456-3770
Fax: (734) 456-3739
www.ttcautomotive.com

