



Bulletin No. SPTP002-0306
AMO1750-4
March 2006

AMO1750-4 Series Auxiliary Transmission and Power Tower



Parts Catalog

INCLUDES:
APO1750-4
APO1000-4

Content, Ratio Table & Identification

CONTENTS

RATIO TABLE 2

GEARS and RELATED PARTS

 For - Manual Shift 3-6

 For - Air-Matic Shift 3-6

CASE, BEARING CAP and RELATED PARTS 7-10

SHIFT HOUSING ASSEMBLIES

 Current Production - Manual Shift..... 11-12

 Air-Matic Shift 13-14

CONTROL VALVE and MOUNTING PARTS 15

OIL COOLER..... 16

SERVICE PARTS KITS 17-20

COMPANION FLANGES, FLANGE YOKES and END YOKES 21

TABULATED BILLS of MATERIAL 22-33

SUPERSESSION LIST 34-40

TOP MOUNTED POWER TAKE- OFFS..... 41-49

RATIO TABLE

| SPEEDS | MODELS | | | |
|-------------|--------------------------|--------------------------|--------------------------|--------------------------|
| | AMO1000-4C AMO1750-4C | AMO1000-4D AMO1750-4D | APO1000-4C APO1750-4C | APO1000-4D APO1750-4D |
| 1st | 2.37 | 1.59 | 2.37 | 1.59 |
| 2nd | 1.24 | 1.24 | 1.24 | 1.24 |
| Direct | 1.00 | 1.00 | 1.00 | 1.00 |
| Overdrive | .812 | .812 | .812 | .812 |
| Shift Plate | NP-142 | NP-142 | NP-119 | NP-119 |

IDENTIFICATION

The Name Plate (NP-96) affixed to the REAR of the transmission is stamped with information:

In requesting more information on these transmissions, Please furnish this information

SERIAL

B/M No.

MODEL

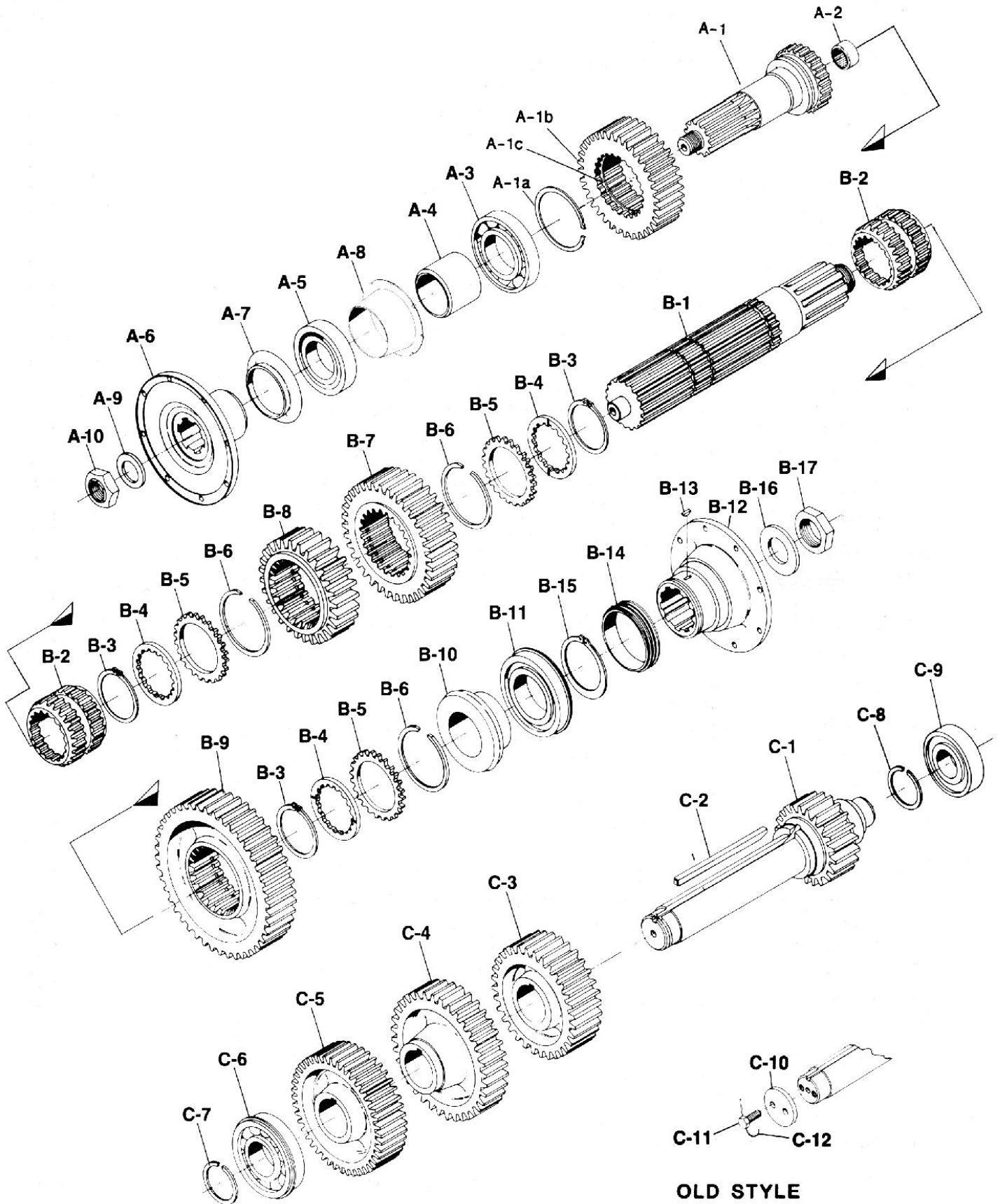
Abbreviations used in this parts list include:

A.R. - As Required

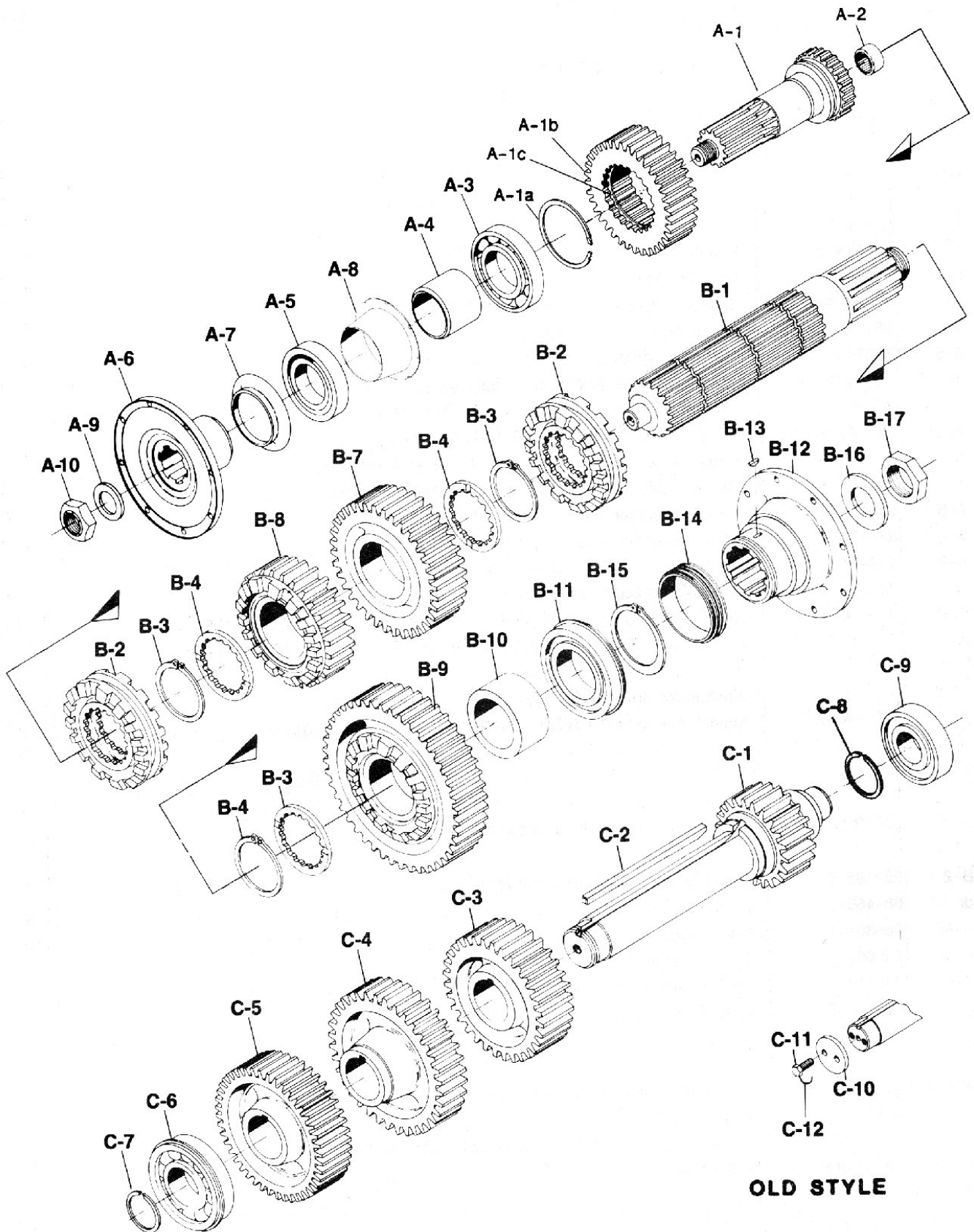
N.S. - Not Shown

N.S.S. - Not Sold Separately

"PARTS LISTED IN THIS CATALOG MAY NO LONGER BE AVAILABLE, USE WITH TRANSMISSION SUPERSEDING LIST."



OLD STYLE



OLD STYLE

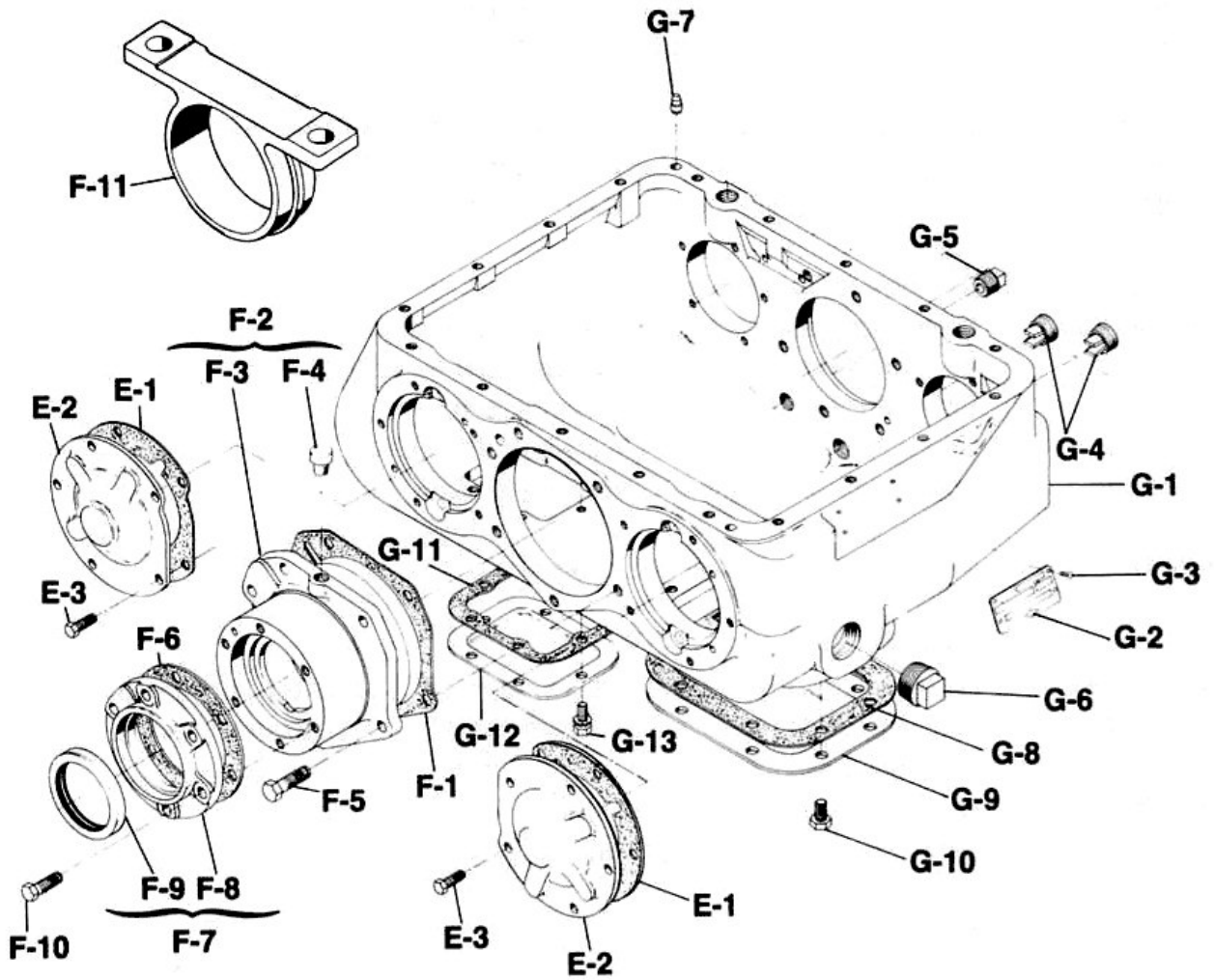
| Ref.No. | Part Number | Part Description | Qty. |
|---------|---------------|--|------|
| | | Drive Gear Group - Input | 1 |
| A-1 | 98-35-5-1X | Input Shaft - (2.594-20T spline)(2) piece D/G) Model AMO/APO1000-4 &1750-4 | 1 |
| A-1a | 98-381-6 | Snap Ring - External Model AMO1000-4 &1750-4 | 1 |
| A-1b | 99-35-1-1X | Drive Gear - (38T) (2) piece D/G) Models AMO1000-4 &1750-4 | 1 |
| or | 99-35-2-1X | Drive Gear - (38T) (2) piece D/G) Model APO1750-4 | 1 |
| A-1c | 97-381-32 | Snap Ring - Internal Model AMO/APO1000-4 &1750-4 | 1 |
| A-2 | 550889 | Bearing - Drive Gear Pocket | 1 |
| A-3 | 550981 | Bearing - Input Shaft Rear Models AMO/AP01000-4 &1750-4 | 1 |
| A-4 | 98-37-9 | Spacer - (used with (2) piece D/G) Models AMO/AP01000-4 &1750-4 | 1 |
| A-5 | 313747X | Bearing - Input Shaft Front Models AMO/APO1000-4 &1750-4 | 1 |
| A-6 | See Tab Bills | Companion Flange or End Yoke - Front | 1 |
| A-7 | 231745 | Slinger - Oil (used with (2)pc. D/G) Models AMO/APO1000-4 &1750-4 | 1 |
| A-8 | 98-468-2 | Baffle - Breather (used with (2)pc. D/G. - A.S.S.N. 2821901 | 1 |
| A-9 | 330734 | Washer - 1 25/32" ID (used with (2)pc. D/G) Models AMO/APO1000-4 &1750-4 | 1 |
| A-10 | 545047 | Nut - 1 3/4"-12 hex head (used with (2)pc. D/G) Models AMO/APO1000-4 &1750-4 | 1 |
| | | Mainshaft Group - Output | |
| B-1 | 98-362-3 | Mainshaft Models AMO/APO1000-4 &1750-4 | 1 |
| or | 98-362-2 | Mainshaft Models APO1000-4 & APO1750-4 | 1 |
| B-2 | 98-465-4 | Clutch Collar Models AMO1000-4 &1750-4 | 2 |
| or | 98-465-2 | Clutch Collar (Curvic Teeth) Models APO1000-4 &1750-4 | 2 |
| B-3 | 98-381-1 | Snap Ring - External | 3 |
| B-4 | 330869 | Thrust Washer - Internal Splined (18T) | 3 |
| B-5 | 330810 | Thrust Washer - External Splined (24T) Models AMO/APO1000-4 &1750-4 | 3 |
| B-6 | 98-381-2 | Snap Ring - Internal AMO1000-4 & AMO1750-4 | 3 |

A.S.S.N. - After Starting Serial Number

Manual/Air-Matic Shift

| Ref.No. | Part Number | Part Description | Qty. |
|---------|---------------|---|------|
| B-7 | 99-8-1 | Gear - Mainshaft 2nd speed (34T) (Models AMO1000-4 & 1750-4) | 1 |
| or | 99-8-5 | Gear - Mainshaft 2nd speed (34T) (Models APO1000-4 & 1750-4) | 1 |
| B-8 | 99-8-3 | Gear - Mainshaft 4th speed (28T) Overdrive (Models AMO1000-4 & 1750-4) | 1 |
| or | 99-8-6-1X | Gear - Mainshaft Overdrive (28T)(Curvic Teeth) (Models APO100-4 & 1750-4) | 1 |
| N.S. | 98-37-7 | Mainshaft Overdrive Lock-out | 1 |
| B-9 | 99-8-8 | Mainshaft 1st speed (44T) (AMO1000-4C & 1750-4C) | 1 |
| or | 99-8-4 | Gear-Mainshaft 1st speed (44T) (APO1000-4C & 1750-4C) | 1 |
| or | 99-8-2 | Gear - Mainshaft 1st speed (38T) (AMO1000-4D & 1750-4D) | 1 |
| or | 99-8-7 | Gear - Mainshaft 1st speed (38T) (APO1000-4D & 1750-4D) | 1 |
| B-10 | 98-37-2 | Spacer-Mainshaft 1st speed Gear (AMO1000-4 & 1750-4) | 1 |
| or | 98-37-6 | Spacer - Mainshaft 1st speed Gear (APO1000-4 & 1750-4) | 1 |
| B-11 | 550925 | Bearing - Mainshaft rear | 1 |
| B-12 | See Tab Bills | Companion Flange or End Yoke - Rear | 1 |
| B-13 | 500007-9 | Key - #3 Woodruff (1/8"x1/2") (for Speedo Drive Gear) | 1 |
| B-14 | 98-452-1 | Gear - Speedometer Drive (4T) (Mechanical) | 1 |
| or | 98-452-2 | Gear - Speedometer Signal (16 grooves) (Electronic) | 1 |
| B-15 | 97-381-6 | Snap Ring - Speedometer Drive or Signal Gear | 1 |
| B-16 | 330734 | Washer - 1 25/32" ID | 1 |
| B-17 | 545047 | Nut - 1 3/4"-12 hex head self-locking | 1 |
| | | Countershaft Group | 2 |
| C-1 | 99-30-1-1X | Countershaft (21T)(incl. Snap Ring 97-381-30) (AMO1000-4C & 1750-4) | 2 |
| or | 99-30-2-1X | Countershaft (27T) (incl. Snap Ring 97-381-30) (AMO1000-4D, 1750D) | 2 |
| C-2 | 98-210-2 | Key-Square | 2 |
| C-3 | 99-196-1 | Gear - 2nd speed C/S (31 T) | 2 |
| C-4 | 99-196-2 | Gear - 4th speed C/S (39T) Overdrive | 2 |
| C-5 | 99-1-1 | Gear - C/S Drive (43T) | 2 |
| C-6 | 550952 | Bearing - C/S front | 2 |
| C-7 | 97-381-30 | Snap Ring - Bearing retaining | 2 |
| C-8 | 97-381-34 | Ring - spacer C/S rear bearing (Right Hand side) | 1 |
| C-9 | 550720 | Bearing - C/S rear | 2 |
| C-10 | 636-W | Washer - C/S bearing retaining | 2 |
| C-11 | 747-D | Bolt - 1/2" -20 x 1 1/8" | 4 |
| C-12 | LW-1 | Lockwire | A/R |

N.S. - Not Shown

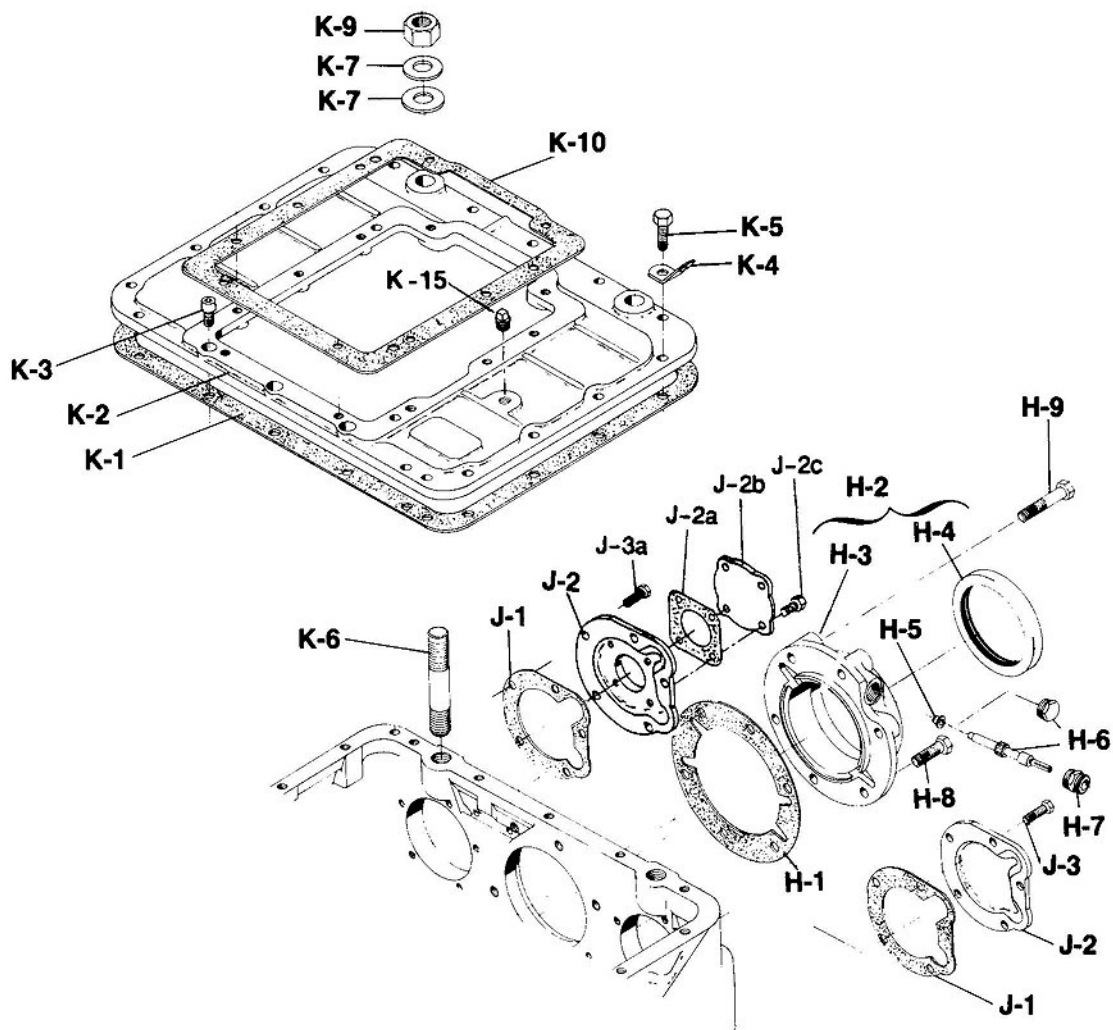


Manual/Air-Matic Shift

| Ref.No. | Part Number | Part Description | Qty. |
|--|--------------|--|------|
| E-1 | 98-223-5 | Gasket | 2 |
| E-2 | 98-22-1 | Cap | 2 |
| E-3 | 545002-4 | Bolt - 3/8"-16 x 1 1/8" hex head self-locking | 10 |
| Drive Gear Bearing Cap and Retainer Group | | | |
| F-1 | 98-223-1 | Gasket - Drive Gear Bearing Retainer | 1 |
| F-2 | 98-360-3-1 X | Retainer Assembly (used with (1) pc. Drive Gear) | 1 |
| or | 98-360-4-1X | Retainer Assembly (used with (2) pc. Drive Gear) (Includes F-1, F-4 and F-6) | 1 |
| F-3 | N.S.S. | Retainer | 1 |
| F-4 | 4328X | Breather | 1 |
| N.S. | 500113-3 | Plug-Breather hole, Shifter Hsg. (See Ref. No. K-11) | 1 |
| N.S. | 500112 | Plug-Breather hole, Top Mount | 1 |
| F-5 | 545001-3 | Bolt - 1/2"-13 x 1 3/4" hex head self-locking | 6 |
| F-6 | 70-223-14 | Gasket - Front Bearing Cap | 1 |
| F-7 | 311726X | Cap Assembly (Includes F-8 and F-9) | 1 |
| F-8 | 70-19-39 | Cap | 1 |
| F-9 | 82-463-4 | Oil Seal | 1 |
| F-10 | 545028-2 | Bolt - 7/16"-14 x 1 1/2" hex head self-locking | 6 |
| F-11 | 70-410-2 | Trunnion | 1 |
| Case Group | | | |
| | 98-15-1-IX | Case Assembly (Includes G-1 thru G-7) | 1 |
| G-1 | N.S.S. | Case | 1 |
| G-2 | NP-96 | Nameplate | 1 |
| G-3 | 252-SP | Pin - Nameplate | 4 |
| G-4 | 62-39-4 | Drain and Oil line Plug | 2 |
| G-5 | 500114 | Plug - 1/2"-14NPTF Thermocouple | 1 |
| G-6 | 50-39-20 | Plug - Magnetic Filler | 1 |
| G-7 | 274-SP | Dowel Pin | 2 |
| G-8 | 97-324-2 | Gasket - 8 Bolt PTO opening | 1 |
| G-9 | 73-267-1 | Cover - 8 Bolt PTO opening | 1 |
| G-10 | 545012 | Bolt - 7/16"-14 x 3/4" flanged head self-locking | 8 |
| G-11 | 97-324-1 | Gasket - 6 Bolt PTO opening | 1 |
| G-12 | 50-267-2 | Cover - 6 Bolt PTO opening | 1 |
| G-13 | 330800 | Bolt - 3/8"-16 x 3/4" flanged head self-locking | 6 |

N.S. - Not Shown

N.S.S. - Not Sold Separately



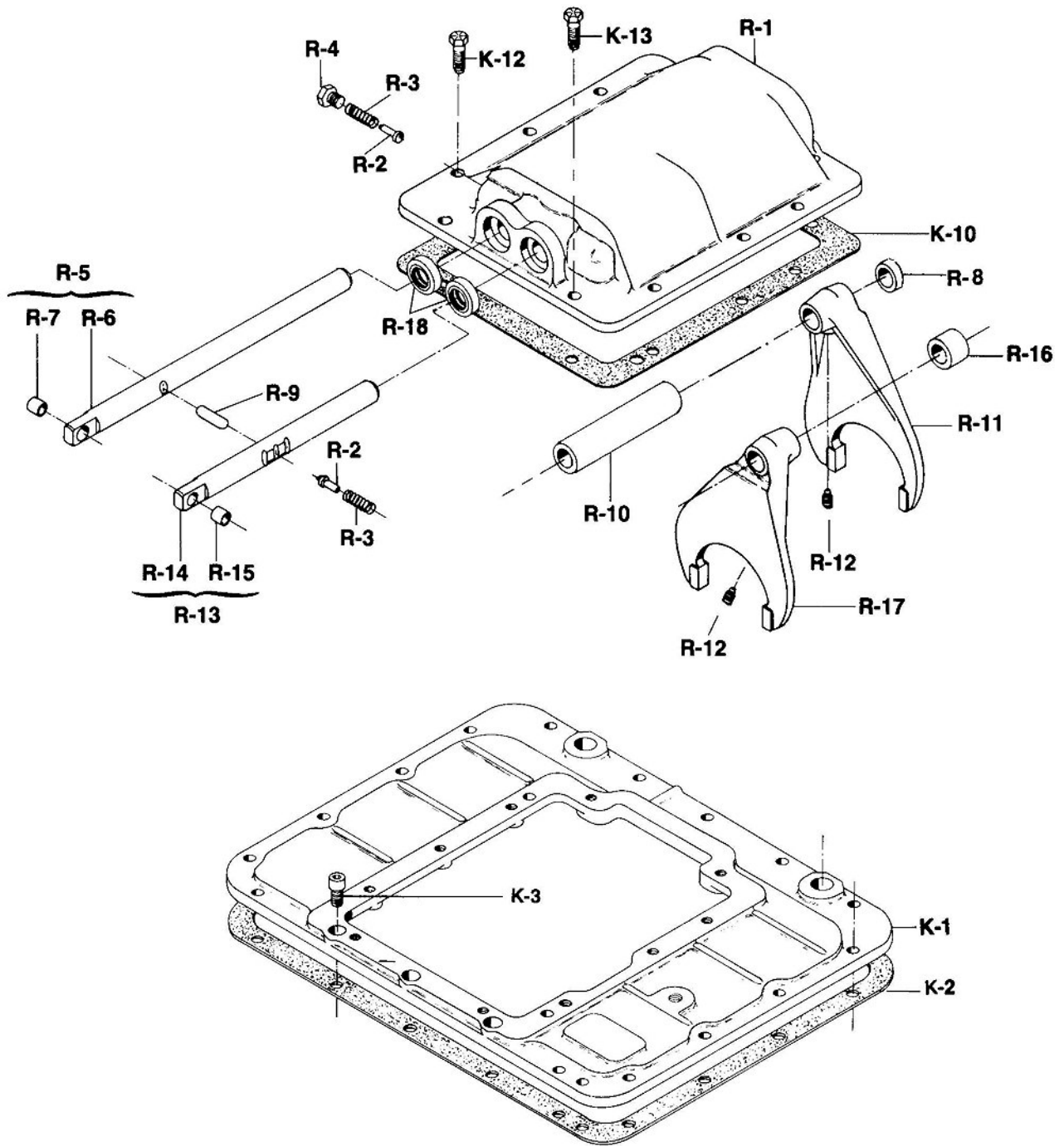
Rear Anchor Stud Chart

| Ref.No | Part Number | Part Description | Qty |
|--------|-------------|--|-----|
| K-6 | 330812 | Stud - 7/8" -14 & 7/8" -9 x 5 1/4" rear anchor..... | 2 |
| or | 330812-1 | Stud - 7/8" -14 & 7/8" -9 x 5 3/4" rear anchor..... | 2 |
| or | 330812-2 | Stud - 7/8" -14 & 7/8" -9 x 4 1/8" rear anchor..... | 2 |
| or | 330812-3 | Stud - 7/8" -14 & 7/8" -9 x 4 7/16" rear anchor..... | 2 |
| or | 330812-4 | Stud - 7/8" -14 & 7/8" -9 x 6 3/4" rear anchor..... | 2 |
| or | 330812-5 | Stud - 7/8" -14 & 7/8" -9 x 5" rear anchor..... | 2 |
| or | 330812-7 | Stud - 7/8" -14 & 7/8" -9 x 6" rear anchor..... | 2 |
| or | 330812-8 | Stud - 7/8" -14 & 7/8" -9 x 5 3/4" rear anchor (longer thd. on mntg. end)..... | 2 |
| or | 330812-9 | Stud - 7/8" -14 & 7/8" -9 x 6 1/4" rear anchor..... | 2 |

| Ref.No. | Part Number | Part Description | Qty. |
|---|-------------|--|------|
| Mainshaft Rear Bearing Cap Group - For Gear Driven Speedometer | | | 1 |
| H-1 | 98-223-2 | Gasket | 1 |
| H-2 | 98-19-1-2X | Bearing Cap Sub-assy. (Includes H-3, H-4 and H-5) | 1 |
| H-3 | N.S.S. | Bearing Cap | 1 |
| H-4 | 98-463-1 | Oil Seal | 1 |
| H-5 | 60-475-1 | Speedometer Bushing | 1 |
| H-6 | 98-453-1 | Gear - Speedometer Driven (12T) | 1 |
| or | 55-334-1 | Plug (used without Speedometer driven gear) | 1 |
| H-7 | 98-454-1-1X | Sleeve and Seal Assembly - Speedometer Driven Gear (Includes 98-463-2 Oil Seal) | 1 |
| N.S. | 44-539-1 | Dust Cap | 1 |
| H-8 | 545001-4 | Bolt - 1/2"-13 x 1 1/2" hex head self-locking | 4 |
| And | | | |
| H-9 | 545001-9 | Bolt - 1/2"-13 x 2 5/8" hex head self-locking | 2 |
| Mainshaft Rear Bearing Cap Group - For Electronic Speedometer | | | |
| H-1 | 98-223-2 | Gasket | 1 |
| H-2 | 98-19-5-1X | Bearing Cap Sub-assembly (Includes H-3,H-4,H-5,55-334-1 & 545021) | 1 |
| H-3 | N.S.S. | BearingCap | 1 |
| H-4 | 98-463-1 | Oil Seal | 1 |
| H-5 | 60-475-1 | Speedometer Bushing | 1 |
| N.S. | 55-334-1 | Plug - Speedo outlet | 1 |
| N.S. | 545021 | Plug - Electronic Speedo/Cruise | 4 |
| And | | | |
| H-9 | 545001-9 | Bolt - 1/2"-13 x 2 5/8" hex head self-locking | 2 |
| Countershaft Rear Bearing Cap Group | | | |
| J-1 | 98-223-4 | Gasket - Right and Left side | 2 |
| J-2 | 98-22-3 | Cap - Left side | 1 |
| and | 98-22-5 | Cap - Right side | 1 |
| J-2a | 70-223-25 | Gasket - Countershaft Plate | 1 |
| J-2b | 98-20-2 | Plate - Oil Pump opening | 1 |
| J-2c | 545005-2 | Screw - Oil Pump Plate (5/16"-18 x 3/4") | 4 |
| J-3 | 545002-4 | Bolt - 3/8"-16 x 1 1/8" hex head self-locking | 5 |
| J-3a | 545002-6 | Bolt - 3/8"-16 x 1 3/8" hex head self-locking (for right side Cap) | 5 |
| Adapter Plate Group | | | |
| K-1 | 98-155-1 | Gasket - Adapter Plate or Shifter Housing | 1 |
| K-2 | 98-215-3 | Adapter Plate | 1 |
| K-3 | 545094 | Bolt - 7/16"-14 x 7/8" socket head self-locking | 3 |
| K-4 | 330564-2 | Lift Hook | 2 |
| K-5 | 545028 | Bolt - 7/16"-14 x 1 1/4" hex head self-locking | 15 |
| K-6 | See Chart | Stud - Rear Anchor | 2 |
| K-7 | 16-W | Washer - 7/8" ID case rear anchor stud spacer | 4 |
| K-9 | 500371-9 | Nut - 7/8-14 hex | 2 |
| K-10 | 70-155-4 | Gasket - Shifter Housing and PTO | 1 |
| K-15 | 500114 | Plug - Oil Cooler return hole | 1 |

N.S. - Not Shown

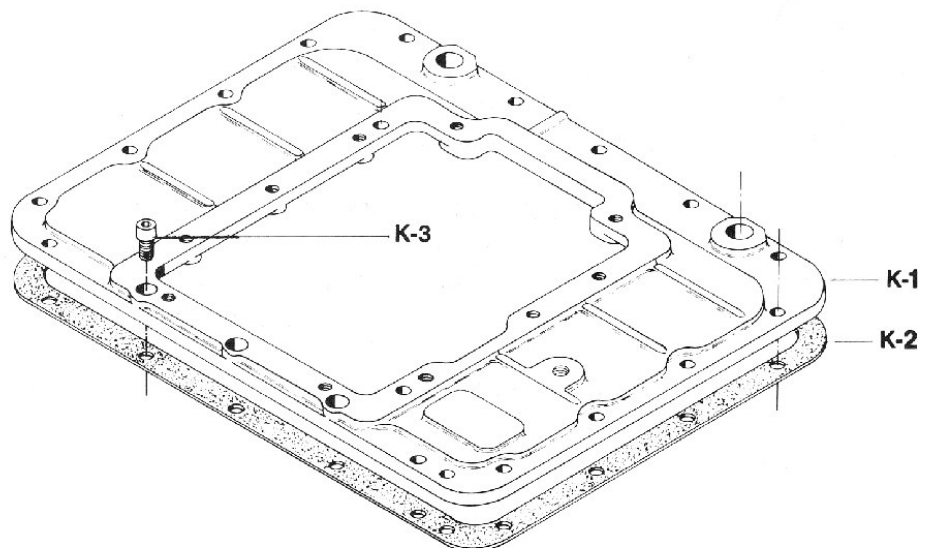
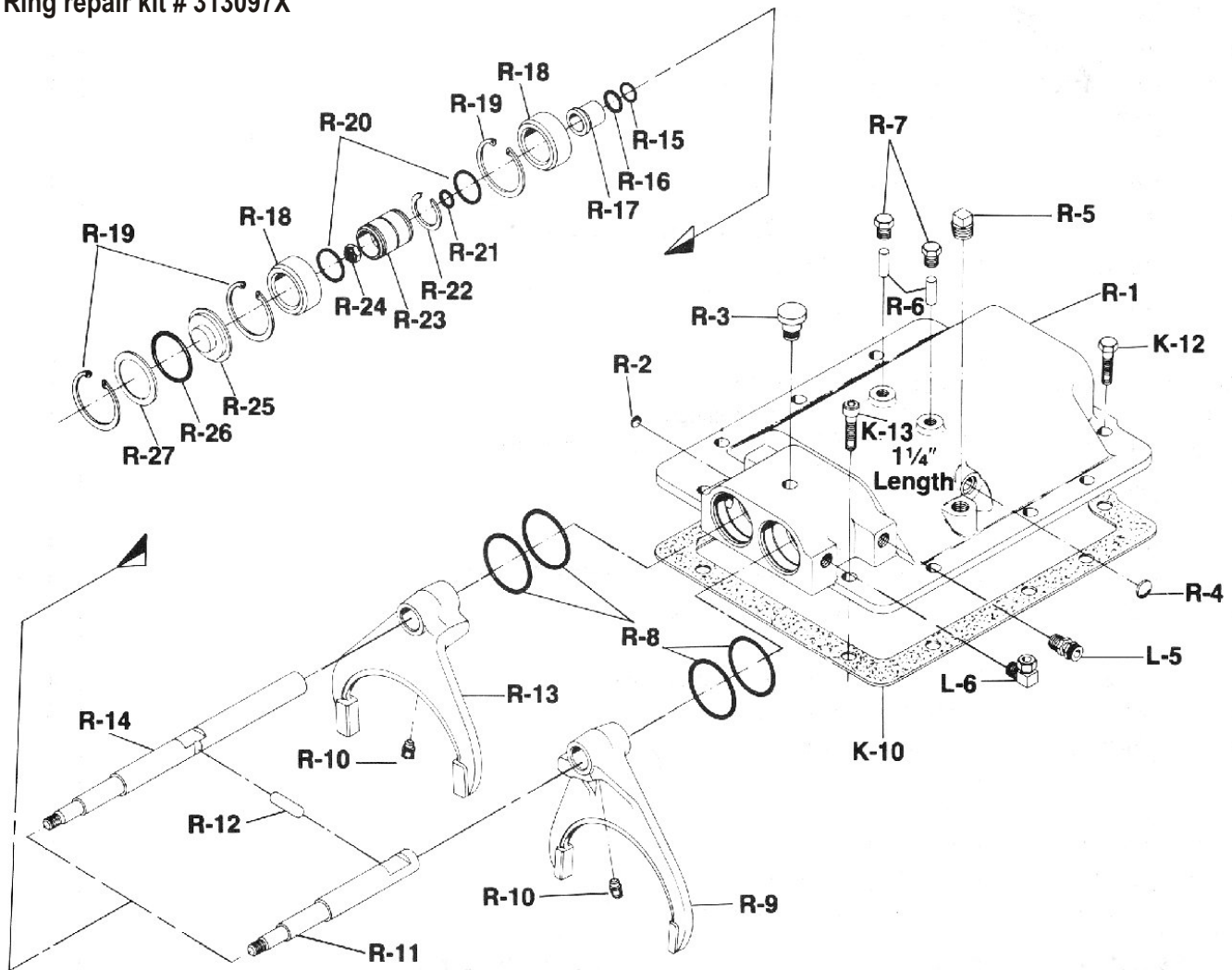
N.S.S. - Not Sold Separately



| Ref.No. | Part Number | Part Description | 70-16-10 | | | | | |
|---|---------------|--|----------|-----|------|-----|------|------|
| | | | -7X | -8X | -11X | 12X | -13X | -14X |
| | See Tab Bills | Shifter Housing Assembly | 1 | 1 | 1 | 1 | 1 | 1 |
| R-1 | 70-16-10 | Shifter Housing | 1 | 1 | 1 | 1 | 1 | 1 |
| R-2 | 97-438-34 | Poppet - Shift Rod | 2 | 2 | 2 | 2 | 2 | 2 |
| R-3 | 97-72-38 | Spring - Shift Rod Poppet | 2 | 2 | 2 | 2 | 2 | 2 |
| R-4 | 59-3 | Plug-poppet hole screw (1/2"-20) | 1 | 1 | 1 | 1 | 1 | 1 |
| R-5 | 98-67-14-1X | Shift Rod and Bushing Assembly - 1st and 2nd speed (includes R-6 & R-7) | 1 | 1 | 1 | 1 | 1 | 1 |
| R-6 | N.S.S. | Shift Rod | 1 | 1 | 1 | 1 | 1 | 1 |
| R-7 | 71-24-14 | Bushing | 1 | 1 | 1 | 1 | 1 | 1 |
| R-8 | 203-9 | Sleeve-1st Speed lockout | | | | 1 | 1 | |
| R-9 | 70-12-1 | Interloc | 1 | 1 | 1 | 1 | 1 | 1 |
| R-10 | 70-203-2 | Sleeve - 2nd speed stop (5 7/8" long) | 1 | 1 | 1 | 1 | 1 | 1 |
| R-11 | 98-66-12 | Shift Fork-1st and 2nd speed | 1 | 1 | 1 | 1 | 1 | 1 |
| R-12 | 545063 | Screw - 7/16"-20 x .750" alien head self-locking | 2 | 2 | 2 | 2 | 2 | 2 |
| R-13 | 98-67-15-1X | Shift Rod & Bushing Assembly - 3rd and 4th speed | 1 | 1 | 1 | 1 | 1 | 1 |
| R-14 | N.S.S. | Shift Rod (includes R-14 & R-15) | 1 | 1 | 1 | 1 | 1 | 1 |
| R-15 | 71-24-14 | Bushing | 1 | 1 | 1 | 1 | 1 | 1 |
| R-16 | 72-203-5 | Sleeve - Overdrive lockout - length 21/32" | | 1 | | 1 | | 1 |
| R-17 | 98-66-12 | Shift Fork - 3rd and 4th speed | 1 | 1 | 1 | 1 | 1 | 1 |
| R-18 | 61-463-4 | Oil Seal - Shift Rod | 2 | 2 | 2 | 2 | 2 | 2 |
| K-1 | 98-215-3 | Adapter Plate | 1 | 1 | | | | |
| K-10 | 70-155-4 | Gasket - Shifter Housing | 1 | 1 | | | | |
| K-12 | 545028-4 | Screw - 7/16"-14x 1.00" hex head self-locking | 8 | 8 | | | | |
| K-13 | 545028-5 | Screw - 7/16"-14x 1 1/8" hex head self-locking (used in right and left front hole as shown) | 2 | 2 | | | | |
| K-2 | 98-155-1 | Gasket - Adapter Plate to aux | | | | | | |
| PARTS LISTED BELOW ARE NOT INCLUDED IN ASSEMBLY | | | | | | | | |
| K-10 | 70-155-4 | Gasket - Shifter Housing | | | 1 | 1 | 1 | 1 |
| K-12 | 545028-4 | Screw - 7/16"- 14x 1.00" hex head self-locking | | | 8 | 8 | 8 | 8 |
| K-13 | 545028-5 | Screw - 7/16"-14x 1 1/8" hex head self-locking (used in right and left front hole as shown) | | | 2 | 2 | 2 | 2 |

N.S.S. - Not Sold Separately

"O" Ring repair kit # 313097X

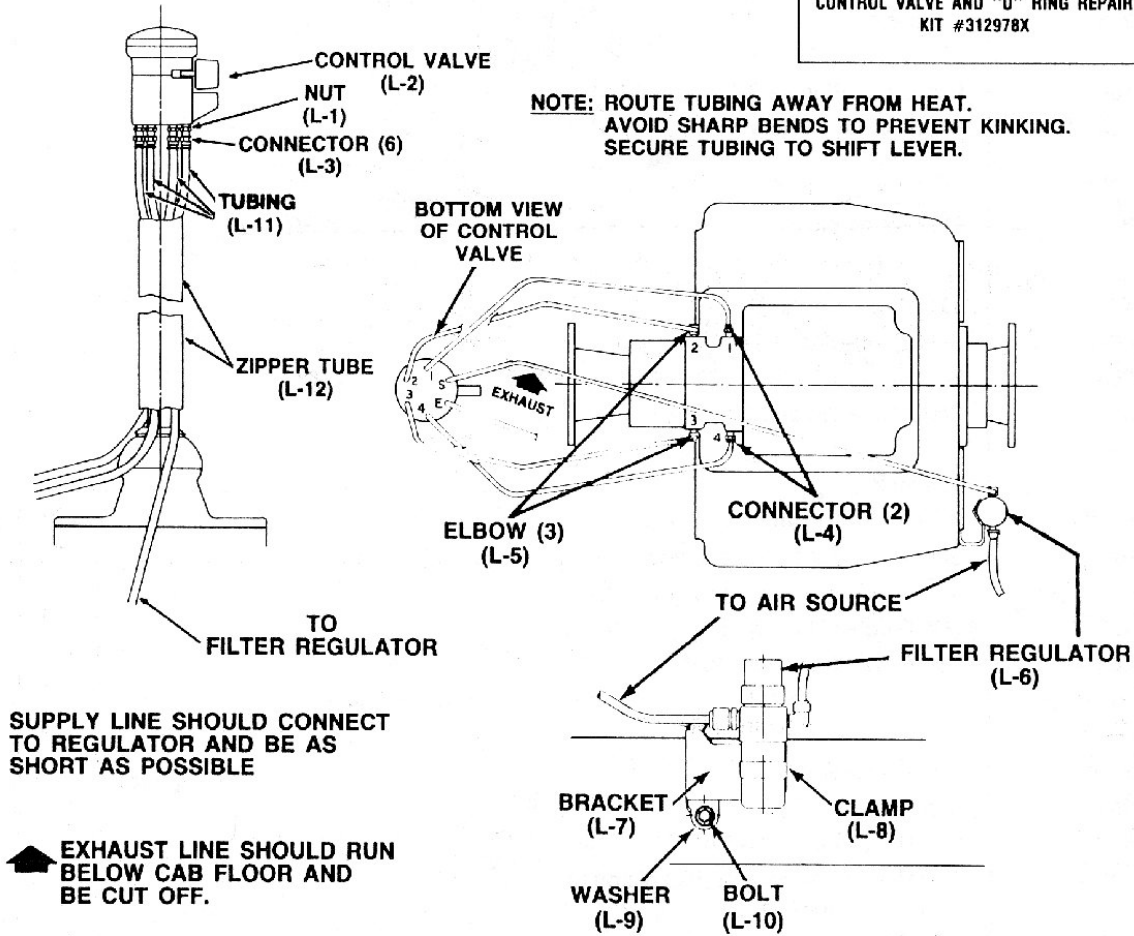


| Ref.No. | Part Number | Part Description | Qty |
|--|-------------|---|-----|
| | 70-16-14-2X | Air-Matic Shifter Housing Assembly | 1 |
| | 70-16-14-4X | Shifter Housing and Breather Assembly (includes R-1 thru R-3) | 1 |
| R-1 | N.S.S. | Shifter Housing | 1 |
| R-2 | 500166-5 | Expansion Plug - 7/16" | 1 |
| R-3 | 312268 | Breather 1 | 1 |
| R-4 | 500166-8 | Expansion Plug - 5/8" | 1 |
| R-5 | 500113 | Plug - breather hole | 1 |
| R-6 | 70-438-1 | Pin - Shift rod stop | 2 |
| R-7 | 59-3 | Plug - stop pin | 2 |
| R-8 | 70-463-3 | "O" Ring - outer piston 4 | 4 |
| R-9 | 70-66-28 | Shift Fork - 3rd and 4th speed | 1 |
| R-10 | 545063 | Screw - 7/16"-20 x .750" Allen head self-locking | 2 |
| R-11 | 98-67-8 | Shift Rod - 3rd and 4th speed | 1 |
| R-12 | 52-12-3 | Interlock | 1 |
| R-13 | 70-66-28 | Shift Fork - 1st and 2nd speed | 1 |
| R-14 | 98-67-7 | Shift Rod - 1st and 2nd speed | 1 |
| R-15 | 70-463-6 | "O" Ring - piston rod bushing internal | 2 |
| R-16 | 97-463-7 | "O" Ring - piston rod bushing outer | 2 |
| R-17 | 70-24-2 | Bushing - piston rod | 2 |
| R-18 | 70-136-1 | Piston-external | 4 |
| R-19 | 80-381-7 | Snapping | 6 |
| R-20 | 70-463-7 | "O" Ring - internal piston | 4 |
| R-21 | 70-463-4 | "O" Ring - internal piston to piston rod | 2 |
| R-22 | 70-381-9 | Snap Ring - internal piston | 2 |
| R-23 | 70-136-3 | Piston - internal | 2 |
| R-24 | 545045 | Nut- 7/16" -20 hex nylon patch self-locking | 2 |
| R-25 | 70-96-2 | Cap - piston end | 2 |
| R-26 | 70-463-1 | "O" Ring - piston end cap | 2 |
| R-27 | 330868 | Washer - piston end cap | 2 |
| PARTS LISTED BELOW ARE NOT INCLUDED IN ASSEMBLY | | | |
| K-10 | 70-155-4 | Gasket - shifter housing | 1 |
| K-12 | 545028 | Screw - 7/16"-14 x 1 1/4" hex head self-locking | 8 |
| K-13 | 545040-1 | 1 Screw - 7/16"-14x 1 1/4" socket head self-locking | 2 |
| CONTROL VALVE PARTS (part of 313127X see page 16 for complete list) | | | |
| L-5 | 312526-1 | Connector | 2 |
| L-6 | 545025-1 | Elbow - nylon tubing | 3 |

N.S.S. - Not Sold Separately

TUBING DIAGRAM

CONTROL VALVE AND "O" RING REPAIR
KIT #312978X



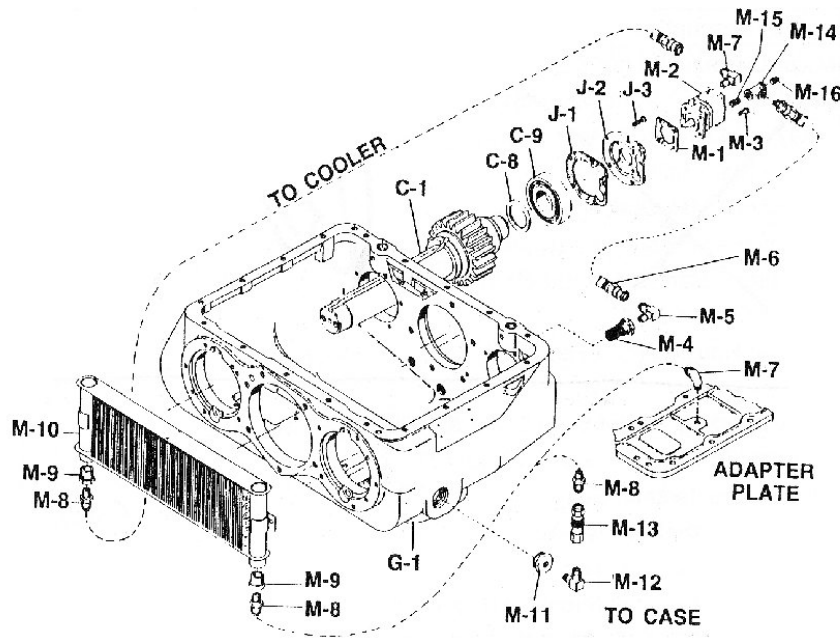
Ref No. Part Number Part Description

313127

-X -1X -2X

| | | | | | |
|------|------------|---|---|---|---|
| L-1 | 500803 | Nut-Shift Lever jam | 1 | | 1 |
| L-2 | 313179 | Valve-Control | 1 | | 1 |
| L-3 | 312526 | Connector | 6 | | 6 |
| L-4 | 312526-1 | Connector | 2 | 2 | 2 |
| L-5 | 545025-1 | Elbow | 3 | 3 | 3 |
| L-6 | 313042 | Filter Regulator | 1 | 1 | 1 |
| L-7 | 97-411-19 | Bracket - Filter Regulator | 1 | 1 | 1 |
| L-8 | 330831 | Clamp - Filter Regulator | 1 | 1 | 1 |
| L-9 | 500365-26 | Washer - 13/32" flat | 2 | 2 | 2 |
| L-10 | 545002-1 | Bolt-3/8"-16x7/8" hex head self-locking | 2 | 2 | 2 |
| L-11 | 85-420-1-1 | Tubing-Nylon Air Line (100 feet) | 1 | | 1 |
| L-11 | 85-420-1 | Tubing - Nylon Air Line (50 feet) | | | 1 |
| L-12 | 330716-1 | Tubing - zipper type (3 feet) | 1 | | 1 |
| N.S. | 330717 | Slider-zip | 1 | | 1 |

N.S. - Not Shown



| Ref No. | Part Number | Part Description | 313231 | | |
|-----------|-----------------------------|---|--------|-----|-----|
| | | | -X | -1X | -2X |
| 313231-4X | Oil Pump Kit | | 1 | 1 | 1 |
| M-1 | 70-223-25 | Gasket - Oil Pump | 1 | 1 | 1 |
| M-2 | 313292 | Oil Pump Assy. (Serviced as 313292-1 X which incl. M-1) | 1 | 1 | 1 |
| C-8 | 97-381-34 | Spacer - Countershaft Rear Bearing | 1 | 1 | 1 |
| J-1 | 98-223-4 | Gasket - Countershaft Rear Bearing Cap | 1 | 1 | 1 |
| J-2 | 98-22-5 | Bearing Cap - Countershaft rear | 1 | 1 | 1 |
| J-3 | 545002-6 | Bolt - 3/8"-16 x 1 1/4" hex head self-locking | 5 | 5 | 5 |
| M-3 | 545005-7 | Bolt - (5/16" -18 x 7/8") | | | |
| | | Discard screws from plate on C/S Brg. Cap | 4 | 4 | 4 |
| 313231-5X | Oil Cooler and Plumbing Kit | | 1 | 1 | 1 |
| M-10 | 313110 * | Oil Cooler Assembly | 1 | 1 | 1 |
| M-4 | 313229 | Oil Filter | 1 | 1 | 1 |
| M-5 | 545051 | Elbow - 90 deg. Case outlet | 1 | 1 | 1 |
| M-6 | 313117-3 | Hose Assembly - Case to pump | 1 | 1 | 1 |
| M-7 | 545051 | Elbow - pump outlet | 2 | 2 | 2 |
| M-8 | 545036 | Adapter - case inlet, cooler inlet & outlet | 3 | 3 | 3 |
| M-9 | 500714-14 | Reducer Bushing - cooler inlet & outlet | 2 | 2 | 2 |
| M-11 | 500714-18 | Reducer Bushing - case inlet | 1 | 1 | 1 |
| M-12 | 545054 | Elbow - 90 deg. case inlet | 1 | 1 | 1 |
| M-13 | 545053 | Quick Disconnect Coupling - case inlet | 1 | 1 | 1 |
| M-14 | 545146 | Tee - Pipe (Pump inlet) | 1 | 1 | 1 |
| M-15 | 545049-1 | Nipple - Pump Inlet | 1 | 1 | 1 |
| M-16 | 500114 | Plug - (End of Pipe Tee) | 1 | 1 | 1 |
| C-1 | 99-30-1-1X | Countershaft (21T) - Model AMO/APO1000-4C, AMO/APO1750-4C | | 1 | |
| | 99-30-10-1X | Countershaft (27T) - Modes AMO/APO1000-4C, AMO/APO1750-4C | | | 1 |

* Also available is 313480 Heat Exchanger Assy. All plumbing hardware is the same as shown in 313231-1X and can be ordered as individual components.

Existing Oil Cooler Systems can be serviced with individual components.

| Part Number | Part Description | Qty |
|-------------------|--|----------|
| 98-400-1X | Major Overhaul Kit (for Base B/M's 301393,301394,301395.) | 1 |
| 98-210-2 | Key - Countershaft Gear | 2 |
| 545047 | Nut - Mainshaft (1 3/4"-12) | 2 |
| 330734 | Washer - Mainshaft Nut | 2 |
| 330810 | Washer - Mainshaft thrust (24T) external | 1 |
| 330869 | Washer-Mainshaft thrust (18T) internal | 1 |
| 98-432-1X | Minor Overhaul Kit | 1 |
| 313429-21X | Shifter Housing Parts Repair Kit | 1 |
| 98-432-1X | Minor Overhaul Kit (Included in Major Overhaul Kit 313400-61 X) | 1 |
| | Bearings | |
| 550982 | Front Input Bearing | |
| 550908 | Bearing - Drive Gear Front | 1 |
| 550914 | Bearing - Drive Gear Rear | 1 |
| 550720 | Countershaft Rear | 2 |
| 550952 | Countershaft Front | 2 |
| 550889 | Drive Gear/Input Shaft Pocket | 1 |
| 550908 | Drive Gear Front | 1 |
| 550914 | Drive Gear Rear | 1 |
| 550925 | Mainshaft Rear | 1 |
| 82-463-4 | Oil Seal - Drive Gear Bearing Cap | 1 |
| 98-463-1 | Oil Seal - Mainshaft Rear Bearing Cap | 1 |
| 545077 | Bearing Lubricant - Packet #2 Moly grease | 1 |
| 545080-1 | Anaerobic Sealant - Mainshaft Nut | 1 |
| 747-D | Screw - Countershaft Retaining Washer | 4 |
| 636-W | Washer - Countershaft Retaining | 2 |
| 2770 | Bulletin - Pocket Bearing Lube Inst. | 1 |
| 2776 | Bulletin - Overhaul Kit Inst | 1 |
| 2783 | Bulletin - Mainshaft Nuts | 1 |
| 2747 | Bulletin - Control Piping Diagram | 1 |
| 2876 | Bulletin - Minor Overhaul Kit Instructions | 1 |
| 2879 | Bulletin - Electronic Service Manuals | 1 |
| 312475-25X | Gasket Kit | 1 |
| 313024-24X | Snap Ring Kit | 1 |

| Part Number | Part Description | Qty |
|-------------------|--|----------|
| 313429-21X | Shifter Housing Repair Kit (Included in both Major Overhaul Kits) | 1 |
| 50-80-5 | Ball - Shift Rod Poppet | 2 |
| 71-24-14 | Bushing | 2 |
| 70-12-1 | Interlock (AMO/ATO1000-4 & 1750-4) | 1 |
| 52-12-3 | Interlock (APOIOOO-4 & 1750-4) | 1 |
| 274-SP | Pin - Case/Shifter Housing Dowel | 2 |
| 59-3 | Plug - Shift Rod Poppet | 2 |
| 71-459-1 | Plunger - Shift Rod Poppet | 2 |
| 97-438-34 | Poppet - Shift Rod | 2 |
| 61-463-4 | Seal - Shift Rod Oil | 2 |
| 72-203-5 | Sleeve - Overdrive Lockout (.656" long) | 1 |
| 70-203-2 | Sleeve - 2nd Speed stop (5.875" long) | 1 |
| 97-72-38 | Spring - Shift Rod Poppet (used for Manual Shift only) | 2 |
| 97-72-4 | Spring - Shift Rod Poppet Ball | 2 |
| 312475-25X | Gasket Kit - (Included in both Minor Overhaul Kits) | 1 |
| 97-324-1 | Gasket - (6) Bolt PTO | 1 |
| 97-324-2 | Gasket - (8) Bolt PTO | 1 |
| 98-155-1 | Gasket - Adapter Plate to Transmission Case | 1 |
| 98-223-5 | Gasket - Countershaft Front Bearing Cap | 2 |
| 98-223-4 | Gasket - Countershaft Rear Bearing Cap | 2 |
| 70-223-14 | Gasket - Drive Gear Bearing Cap | 1 |
| 98-223-1 | Gasket - Drive Gear Bearing Retainer | 1 |
| 98-223-2 | Gasket - Mainshaft Rear Bearing Cap | 1 |
| 70-155-4 | Gasket - Shifter Housing or Top Mount PTO | 1 |
| 313024-24X | Snap Ring Kit - (Included in both Minor Overhaul Kits) | 1 |
| 97-381-30 | Countershaft Front Bearing Retaining | 2 |
| 98-381-6 | Ring - Input Shaft External (used for (2)pc. Drive Gear only) | 1 |
| 97-381-32 | Ring - Drive Gear Internal (used for (2)pc. Drive Gear only) | 1 |
| 98-381-2 | Ring - Mainshaft Internal (large) | 3 |
| 98-381-1 | Ring - Mainshaft External (large) | 3 |
| 97-381-6 | Ring - Speedometer Drive Gear | 1 |

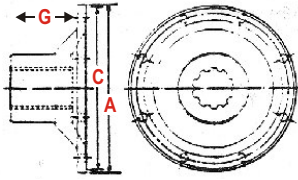
| Part Number | Part Description | Qty |
|---|---|------------|
| KITS NOT INCLUDED IN MAJOR OR MINOR OVERHAUL KITS | | |
| 313097X | "O" Ring Kit - (To Service Air Shifter Housing) | 1 |
| 70-24-2 | Bushing - Piston Rod | 2 |
| 500166-8 | Plug-Welch | 1 |
| 80-381-7 | "O" Ring - Cylinder Snap | 6 |
| 70-463-1 | "O" Ring - End Cap | 2 |
| 70-463-7 | "O" Ring - Internal Piston | 4 |
| 70-381-9 | "O" Ring - Internal Piston Snap | 2 |
| 70-463-3 | "O" Ring - Outer Piston | 4 |
| 70-463-6 | "O" Ring - Piston Rod Bushing "O" (internal) | 2 |
| 70-463-4 | "O" Ring - Piston | 2 |
| 97-463-7 | "O" Ring - Splitter or Range Valve Housing | 2 |
| 330895 | Lubricant - "O" Ring | 1 |
| 2718 | Bulletin - Installation Instructions | 1 |
| 2726 | Bulletin - "O" Ring Repair | 1 |
| 312475-26X | Gasket Kit - (To Service Units with Top Mounted PTO's) | 1 |
| 97-324-1 | Gasket - (6) Bolt PTO | 1 |
| 97-324-2-1 X | Gasket - (8) Bolt PTO | 1 |
| 98-155-2 | Gasket - Adapter Plate to PTO Case | 1 |
| 98-155-1 | Gasket - Adapter Plate to Transmission Case | 1 |
| 98-223-5 | Gasket - Countershaft Front Bearing Cap | 2 |
| 98-223-4 | Gasket - Countershaft Rear Bearing Cap | 2 |
| 70-223-14 | Gasket - Drive Gear Bearing Cap | 1 |
| 98-223-1 | Gasket - Drive Gear Bearing Retainer | 1 |
| 98-223-2 | Gasket - Mainshaft Rear Bearing Cap | 1 |
| 70-223-26 | Gasket - Output Shaft Front & Rear Bearing Cap | 2 |
| 70-223-24 | Gasket - Output Shaft Rear Bearing Cap | 1 |
| 70-223-25 | Gasket - PTO Oil Pump Mounting | 1 |
| 70-223-23 | Gasket - Reverse Shaft Front & Rear Bearing Cap | 1 |

| Part Number | Part Description | Qty |
|---|---|----------|
| KITS NOT INCLUDED IN MAJOR OR MINOR OVERHAUL KITS | | |
| 312477-32X | Small Parts Kit - (used to Service Units with Top Mounted PTO's) | 1 |
| 50-80-1 | Ball - Shift Rod Poppet | 3 |
| 70-12-1 | Interlock | 1 |
| 98-210-2 | Key - Countershaft Gear | 2 |
| 425-SPP | in - Output Drive Gear Sleeve (PTO) | 1 |
| 97-381-30 | Snap Ring - Countershaft Front Bearing Retaining | 2 |
| 98-381-2 | Snap Ring - Mainshaft Internal | 3 |
| 98-381-1 | Snap Ring - Mainshaft External | 3 |
| 98-381-3 | Snap Ring - Output Drive Gear (PTO) | 1 |
| 70-381-5 | Snap Ring - Reverse Gear Shaft | 2 |
| 97-381-6 | Snap Ring - Speedometer Drive Gear | 1 |
| 747-DS | crew - Countershaft Front Bearing Retainer Washer | 4 |
| 61-463-4 | Oil Seal - Output Gear Shift Rod (PTO) | 4 |
| 22-72-5 | Spring - Poppet Output Gear Shift Rod (PTO) | 1 |
| 22-72-2 | Spring - Shift Rod Poppet | 2 |
| 636-W | Washer - Countershaft Front Bearing Retainer | 2 |
| 330869 | Washer - Mainshaft Internal Thrust (18T) (large) | 3 |
| 330810 | Washer - Mainshaft External Thrust (24T) | 3 |

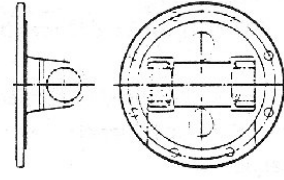
Bearing Kits for Top Mount PTO Assemblies

| | | |
|-------------------|---|----------|
| 312476-22X | Cylindrical Roller Style Bearing Kit | 1 |
| 550912 | Bearing Cone - Intermediate Gear Front | 1 |
| 550913 | Bearing Cup - Intermediate Gear Front | 1 |
| 550183 | Bearing Cone - Intermediate Gear Rear | 1 |
| 550228 | Bearing Cup - Intermediate Gear Rear | 1 |
| 550940 | Bearing - Output Shaft Front and Rear | 2 |
| 550941 | Bearing - Reverse Shaft Front and Rear | 2 |

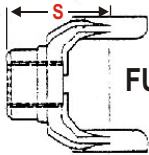
COMPANION FLANGE



FLANGE YOKE



| Joint Series | A Flange Diameter | Companion Flange Sub-Assy. | Consists of | | G End of Hub To Flange Face Length | C Pilot Dia F-Femal M-Male | Flange Yoke | Flange Yoke 1650 Series |
|--|----------------------|----------------------------|------------------|---------|---------------------------------------|-------------------------------------|-------------|-------------------------|
| | | | Companion Flange | Slinger | | | | |
| Front of AMO/AP01000-4 & 1750-4 2.594"-20T Spline | | | | | | | | |
| 1710 | 8.0" | 6-1-5691X | 6-1-4881 | 231745 | 3.000" | F-7 3/4" | | |
| 1810 | 8.0" | 6.5-1-2501X | 6.5-1-1991 | 231745 | 3.000" | F-7 3/4" | | |
| Rear of AMO/AP01000-4 & 1750-4 2.747"-10T Spline | | | | | | | | |
| 1810 | 8.0" | | 6.5-1-1871 | | 3.750" | F-7 3/4" | 6.5-2-329" | |



FULL ROUND



U-BOLT - BRG. STRAP - HALF ROUND

| Joint Series | End Yoke Sub-Assembly | Consists of | | S End of Hub To Center Face Length | Momentary Joint Angle |
|--|-----------------------|--------------|---------|---------------------------------------|-----------------------|
| | | Yoke | Slinger | | |
| Front of AMO/APO1000-4 & 1750-4 2.632"-20T Spline | | | | | |
| 1710 | 6-4-7071 X | 6/4/5351 | 231745 | 5 3/16" | 21 deg. |
| 1710 | 6-4-7071-1X | 6-4-5351-1 | 231745 | 5 3/16" | 21 deg. |
| 1760 | 6.3-4-871 X | 6.3-4-41 | 231745 | 5 9/16" | 30 deg. |
| 1760 | 6.3-4-871-1X | 6.3-4-41-1 | 231745 | 5 9/16" | 30 deg. |
| 1810 | 6.5-4-3541 X | 6.5-4-3021 | 231745 | 5 9/16" | 30 deg. |
| 1810 | 6.5-4-3541-1X | 6.5-4-3021-1 | 231745 | 5 9/16" | 30 deg. |
| Rear of AMO/APO1000-4 & 1750-4 2.749"-10T Spline | | | | | |
| 1710 | | 6-4-4651 | | 5 5/16" | 20 deg. |
| 1710 | | 6-4-4651-1 | | 5 5/16" | 20 deg. |
| 1760 | | 6.3-4-61 | | 6" | 30 deg. |
| 1760 | | 6.3-4-61-1 | | 6" | 30 deg. |
| 1810 | | 6.5-4-2171 | | 6" | 30 deg. |
| 1810 | | 6.5-4-2171-1 | | 6" | 30 deg. |
| SDC250 | | 250-4-551-1 | | 6 9/32" | 30 deg. |

TABULATED BILLS OF MATERIALS

MODELS:

AMO1000-4 & 1750-4

Manual Shift

| Tab No. | Used by | Trunnion | Flange or Yoke | | Speedometer | | Shifter Housing Assembly | Top Mounted PTO |
|----------------------------------|------------------|----------|----------------|------------|-------------|-------------|--------------------------|-----------------|
| | | | Front | Rear | Drive Gear | Driven Gear | | |
| 301474 - Model AMO1000-4C | | | | | | | | |
| -1 | Freightliner | | | | | | 70-16-10-11X | |
| +2 | Navistar | | | | | | 70-16-10-11X | |
| s-3 | Service | | | | | | | |
| +S-4 | Peterbilt | | 6-4-7071 X | | | | | |
| -5 | Mack | | | | 98-452-1 | 98-453-1 | 70-16-10-11X | |
| +6 | Navistar | | | | | | | 313254-3X |
| -7 | Can. Kenworth | | 6.5-4-3541X | 6.5-4-2171 | 98-452-1 | 98-453-1 | | 313254-3X |
| -8 | Mack | | | | 90-452-1 | 98-453-1 | | 313254-3X |
| +--9 | Navistar | | | | | | 70-16-10-11X | |
| -10 | Mack | | | | 98-452-1 | 98-453-1 | | 313254-3X |
| +11 | Freightliner | | | | 98-452-2 | | 70-16-10-11X | |
| +12 | Kenworth | | 6-4-7071 X | 3-4-4651 | 98-452-2 | | 70-16-10-11X | |
| +13 | Pbterbilt | | 6-4-7071X | | | | 70-16-10-11X | |
| +14 | Kenworth | | 6-4-7071X | 6-4-4651 | 98-452-2 | | | 313254-3X |
| +15 | VolvoGM | | | | | | 70-16-10-11X | |
| +16 | Navistar | | | | | | 70-16-10-11X | |
| +17 | Peterbilt | | 6-4-7071-1X | | | | 70-16-10-11X | |
| +18 | Peterbilt | | 6-4-7071-1X | | | | | 313254-3X |
| -19 | VolvoGM | | | | 98-452-2 | 98-453-1 | 70-16-10-11X | |
| +20 | Freightliner | | | | 98-452-2 | | | 313254-3X |
| +21 | Kenworth | | 6-4-7071-1X | 6-4-4651-1 | 98-452-2 | | 70-16-10-11X | |
| +22 | Kenworth | | 6-4-7071-1X | 6-4-4651-1 | 98-452-2 | | | 313254-3X |
| +23 | Kenworth | | 6-4-7071-1X | 6-4-4651-1 | 98-452-2 | | | 313254-3X |
| -24 | VolvoGM | | | | 98-452-2 | 98-453-1 | | 313254-3X |
| -25 | VolvoGM | | | | 98-452-2 | 98-453-1 | | 313254-3X |
| -26 | Marmon Motor | 70-410-2 | 6.5-4-3541X | 6.5-4-2171 | 98-452-2 | 98-453-1 | 70-16-10-11X | |
| -27 | Marmon Motor | 70-410-2 | 6.5-4-3541X | 6.5-4-2171 | 98-452-2 | 98-453-1 | | 313254-3X |
| +28 | Western Star | | | | 98-452-2 | | 70-16-10-11X | |
| +29 | Freightliner | | | | 98-452-2 | | | 313254-3X |
| -30 | Ford | | | | 98-452-2 | 98-453-1 | | 313254-3X |
| -31 | Spicer Australia | 70-410-2 | 6-4-7071X | 6.5-4-2171 | 98-452-2 | 98-453-1 | 70-16-10-11X | |
| -32 | Can. Kenworth | | 6-4-7071X | 6-4-4651 | 98-452-2 | 98-453-1 | | 313254-3X |
| -33 | Pacific Truck | | 6.5-1-2501X | 6.5-1-1871 | 98-452-2 | 98-453-1 | | 313254-3X |
| -34 | Peterbilt | | 6-4-7071X | 6-4-4651 | 98-452-2 | 98-453-1 | | 313254-3X |
| -35 | Osterlund | 70-410-2 | 6.5-4-3541X | 6.5-4-2171 | | | | 313254-3X |

Manual Shift

| Tab No. | Used by | Trunnion | Flange or Yoke | | Speedometer | | Shifter Housing Assembly | Top Mounted PTO |
|--|------------------|-----------|----------------|------------|-------------|-------------|--------------------------|-----------------|
| | | | Front | Rear | Drive Gear | Driven Gear | | |
| 301474 - Model AMO1000-4C (continued) | | | | | | | | |
| +36 | Navistar | | | | | | | 313254-2X |
| -37 | Spicer Australia | 70-410-2 | | | 98-452-1 | 98-453-1 | | 313254-6X |
| -38 | Kenworth | | 6-4-7071X | 6-4-4651 | 98-452-1 | 98-453-1 | 70-16-10-11X | |
| -39 | Can. Kenworth | | 6-4-7071X | 6-4-4651 | 98-452-1 | 98-453-1 | | |
| -40 | DWT | 70-410-2 | 6.5-1-2501X | | 98-452-1 | 98-453-1 | 70-16-10-11X | |
| -41 | VolvoGM | | | | | | | 313254-3X |
| -42 | Peterbilt | 6-4-7071X | 6-4-4651 | | 98-452-1 | 98-453-1 | 70-16-10-11X | |
| -43 | Pacific Truck | | 6.5-1-2501X | 6.5-4-2171 | 98-452-1 | 98-453-1 | | 313254-3X |
| -44 | Pacific Truck | | 6.5-1-2501X | 6.5-4-2171 | 98-452-1 | 98-453-1 | 70-16-10-11X | |
| +45 | Mack | | | | 98-452-2 | | | 313254-3X |
| #46 | Marmon Motor | 70-410-2 | 6.5-1-2501X | 6.5-4-2171 | 98-452-1 | 98-453-1 | 70-16-10-12X | |
| -47 | Marmon Motor | 70-410-2 | 6-4-7071X | 6-4-4651 | 98-452-1 | 98-453-1 | | 313254-3X |
| -48 | VolvoGM | | | | 98-452-1 | 98-453-1 | | 313254-3X |
| -49 | VolvoGM | | | | 98-452-1 | 98-453-1 | 70-16-10-11X | |
| +50 | Kenworth Mex. | | 6.5-1-2501X | 6.5-4-2171 | 98-452-2 | | 70-16-10-11X | |
| +51 | Kenworth Mex. | | 6.5-1-2501X | 6.5-4-2171 | 98-452-2 | | 313254-3X | |
| -52 | Mack | 70-410-2 | | | 98-452-1 | 98-453-1 | | 313254-3X |
| **53 | Amer. Hoist | 70-410-2 | | 6.5-4-2171 | 98-452-1 | 98-453-1 | 70-16-40-14X | |
| +54 | CrawfordMS&f | 70-410-2 | 6-4-7071X | 6-4-4651 | 98-452-2 | | | 313254-3X |
| -55 | Navistar | | | | | | | 313254-3X |
| 56 | Peterbilt | | 6-4-7071-1X | | | | | 313254-7X |
| ^57 | Peterbilt | | 6-4-7071X | 6-4-4651 | 98-452-1 | 98-453-1 | 70-16-10-11X | |
| +58 | Mack | | | | 98-452-1 | 98-453-1 | | 313254-2X |
| +59 | Peterbilt | | 6-4-7071-1X | | | | | 313254-7X |
| +60 | Mack | | | | 98-452-2 | | | 313254-2X |
| +61 | Mack | | | | 98-452-2 | | 70-16-10-11X | |
| +62 | Mack | | | | | | 70-16-10-11X | |
| +63 | Mack | | | | 98-452-2 | | | 313254-4X |
| +64 | Crawford | 70-410-2 | 6.3-4-871-1X | 6.3-4-4-1 | 98-452-2 | | | 313254-1X |
| +65 | Kenworth | | 6-4-7071X | | 6-4-465-1 | 98-452-2 | 70-16-10-11X | |
| +66 | Greer Ind. | 70-410-2 | 6-4-7071X | | | | | 313254-7X |
| ^67 | Navistar | | | | | | | 313254-3X |
| +68 | Greer Ind. | | 6-4-7071-1X | | | | | |
| +69 | Greer Ind. | | 6-4-7071-1X | | | | 70-16-10-11X | |
| +70 | Kenworth | | 6.5-4-3541X | 6.5-4-2171 | 98-452-2 | | | 313254-3X |
| +71 | Kenworth | | 6.3-4-871X | | 6.3-4-61 | 98-452-2 | | |
| 313254-3X | | | | | | | | |
| +72 | Kenworth | | 6.3-4-871-1X | 6.3-4-61-1 | 98-452-2 | | | 313254-3X |

Manual Shift

| Tab No. | Used by | Trunnion | Flange or Yoke | | Speedometer | | Shifter Housing Assembly | Top Mounted PTO |
|--|------------|----------|----------------|--------------|-------------|-------------|--------------------------|-----------------|
| | | | Front | Rear | Drive Gear | Driven Gear | | |
| 301474 - Model AMO1000-4C & 1750-4D | | | | | | | | |
| +73 | Kenworth | | 6.5-4-3541-1X | 6.5-4-2171-1 | 98-452-2 | | | 313254-3X |
| +74 | Kenworth | | 6.5-4-3541X | 6.5-4-2171 | 98-452-2 | | | 313254-1X |
| +75 | Kenworth | | 6.3-4-871X | | 6.3-4-61 | 98-452-2 | | 313254-1X |
| +76 | Kenworth | | 6.3-4-871-1X | 6.3-4-61-1 | 98-452-2 | | | 313254-1X |
| +77 | Kenworth | | 6.5-4-3541-1X | 6.5-4-1271-1 | 98-452-2 | | | 313254-1X |
| +78 | Kenworth | | 6.3-4-871-1X | 6.3-4-61-1 | 98-452-2 | | 70-16-10-11X | |
| +79 | Kenworth | | 6-4-7071X | | 6-4-4651 | 98-452-2 | | 313254-3X |
| +80 | Peterbilt | | 6.5-4-3541-1X | | | | 70-16-10-11X | |
| +81 | Kenworth | | 6.5-4-3541-1X | 6.5-4-2171 | 98-452-2 | | 70-16-10-11X | |
| +82 | Kenworth | | 6.5-4-3541-1X | 6.5-2171-1 | 98-452-2 | | | 313254-5X |
| ^83 | AG Chem | 70-410-2 | 6-4-7071X | 6-4-4651 | 98-452-1 | 98-453-1 | 70-16-10-11X | |
| +84 | Kenworth | | 6-4-7071X | | 6-4-4651 | 98-452-2 | | 313254-1X |
| +85 | Kenworth | | 250-4-521-1X | 250-4-551-1 | 98-452-2 | | | 313254-3X |
| +86 | Humble EQ. | 70-410-2 | 6.5-4-3541X | 6.5-4-2171 | 98-452-2 | | | 313254-2X |
| +87 | Navistar | | | | 98-452-2 | | | 313254-4X |
| +88 | Crawford | 70-410-2 | 6-4-7071X | | 6-4-4651 | 98-452-2 | | 313254-1X |
| +89 | Peterbilt | | 6.5-4-3541X | | | | | 313254-6X |
| #90 | Peterbilt | | 6-4-7071-1X | | | | | 313254-10X |
| +91 | Kenworth | | 250-4-521-1X | 250-4-551-1 | 98-452-2 | | 70-16-10-11X | |
| +92 | Peterbilt | | 170-4-1111-1X | | 98-452-2 | | | 313254-7X |
| +93 | Kenworth | | 6.5-4-3541-1X | 6.5-4-2171-1 | 98-452-2 | | 70-16-10-11X | |
| +94 | Peterbilt | | 250-4-521-1X | | | | | 313254-7X |
| +95 | Peterbilt | | 6.5-4-3541-1X | | | | | 313254-6X |
| +96 | Peterbilt | | 250-4-521-1X | | | | | 313254-6X |
| +97 | Peterbilt | | 250-4-521-1X | | | | 70-16-10-11X | |
| +98 | Peterbilt | | 6.5-4-3541-1X | | | | | 313254-7X |
| +99 | | | | | | | | |
| ^100 | Standard | | | | | | | |
| +101 | Kenworth | | 250-4-521-1X | 250-4-521-1X | 98-452-2 | | | 313254-1X |

s - Short Box

+ - Unit has Electronic Speedo Mainshaft Rear Bearing Cap

^ - Unit has a 313292-1X Oil Cooler Pump Kit

- Unit has Overdrive blocked out

** - Unit has 1st speed and Overdrive blocked out

TABULATED BILLS OF MATERIALS

MODELS:

AMO1000-4 & 1750-4

Manual Shift

| Tab No. | Used by | Trunnion | Flange or Yoke | | Speedometer | | Shifter Housing Assembly | Top Mounted PTO |
|---------------------------------|------------------|----------|----------------|------------|-------------|-------------|--------------------------|-----------------|
| | | | Front | Rear | Drive Gear | Driven Gear | | |
| 301475- Model AMO1000-4D | | | | | | | | |
| -1 | Freightliner | | | | | | | |
| -2 | Kenworth | | 6-4-7071X | 6-4-4651 | 98-452-1 | 98-453-1 | 70-16-10-11X | |
| S-3 | Service | | | | | | 70-16-10-11X | |
| S+4 | Peterbilt | | 6-4-7071X | | | | | |
| -5 | Western Star | | | | 98-452-1 | 98-453-1 | 70-16-10-11X | |
| +6 | Kenworth | | 6-4-7071X | 6-4-4651 | 98-452-2 | | 70-16-10-11X | |
| +7 | Peterbilt | | 6-4-7071X | | | | 70-16-10-11X | |
| +8 | Navistar | | 6-4-7071X | | | | 70-16-10-11X | |
| +9 | Peterbilt | | 6-4-7071-1X | | | | 70-16-10-11X | |
| +10 | Peterbilt | | 6-4-7071-1X | | | | | 313254-6X |
| +11 | Kenworth | | 6-4-7071-1X | 6-4-4651-1 | 98-452-2 | | 70-16-10-11X | |
| +12 | Kenworth | | 6-4-7071-1X | 6-4-4651-1 | 98-452-2 | | | 313254-3X |
| +13 | Freightliner | | | | 98-452-2 | | 70-16-10-11X | |
| -14 | VolvoGM | | | | 98-452-1 | 98-453-1 | | 313254-2X |
| -15 | VolvoGM | | | | 98-452-1 | 98-453-1 | | 313254-4X |
| -16 | VolvoGM | | | | 98-452-1 | | 70-16-10-11X | |
| +17 | Kenworth | | 6-4-7071-1X | 6-4-4651-1 | 98-452-2 | | 70-16-10-11X | |
| -18 | Western Star | | | | 98-452-1 | 98-453-1 | | 313254-3X |
| -19 | Western Star | | | | 98-452-1 | 98-453-1 | | 313254-1X |
| +20 | Navistar | | | | | | 70-16-10-11X | |
| +21 | Kenworth | | 6.3-4-871-1X | 6.3-4-61-1 | 98-452-2 | | 70-16-10-11X | |
| +22 | Western Star | | | | 98-452-2 | | 70-16-10-11X | |
| -23 | Marmon Motor | 70-410-2 | 6.5-4-3541X | 6.5-4-2171 | 98-452-1 | 98-453-1 | 70-16-10-11X | |
| +0-24 | Kenworth | | 6-4-7071X | 6-4-4651 | 98-452-2 | | 70-16-10-11X | |
| -25 | VolvoGM | | | | 98-452-1 | 98-453-1 | 70-16-10-11X | |
| +26 | VolvoGM | | | | | | 70-16-10-11X | |
| -27 | Pacific Truck | | 6.5-1-2501X | 6.5-1-1871 | 98-452-1 | 98-453-1 | | 313254-3X |
| -28 | Pacific Truck | | 6.5-4-3541X | 6.5-4-2171 | 98-452-1 | 98-453-1 | 70-16-10-11X | |
| -29 | Peterbilt | | 6-4-7071X | 6-4-4651 | 98-452-1 | 98-453-1 | 70-16-10-11X | |
| +30 | Navistar | | | | | | 70-16-10-11X | |
| -31 | Spicer Australia | 70-410-2 | 6-4-7071X | 6.5-4-2171 | 98-452-1 | 98-453-1 | 70-16-10-11X | |
| +32 | Kenworth | | 6-4-7071-1X | 6-4-4651-1 | 98-452-2 | | | 313254-1X |
| +33 | Pacific Truck | | 6.5-4-3541X | 6.5-4-2171 | 98-452-1 | 98-453-1 | | 313254-3X |
| -34 | Volvo GM | | | | 98-452-2 | | | 313254-2X |
| -35 | Halliburton | 70-410-2 | 6-1-5691X | 6.5-1-1871 | 98-452-1 | 98-453-1 | 70-16-10-11X | |

Manual Shift

| Tab No. | Used by | Trunnion | Flange or Yoke | | Speedometer | | Shifter Housing Assembly | Top Mounted PTO |
|--|------------|----------|----------------|--------------|-------------|-------------|--------------------------|-----------------|
| | | | Front | Rear | Drive Gear | Driven Gear | | |
| 301475 - Model AMO1000-4D (Continued) | | | | | | | | |
| -36 | Volvo GM | | | | 98-452-2 | | 70-16-10-11X | |
| -37 | CMI | 70-410-2 | 6.5-4-3541X | 6.5-4-2171 | 98-452-1 | 98-453-1 | 70-16-01-11X | |
| -38 | Manning Eq | | | | 98-452-2 | | | 313254-1X |
| -39 | Kenworth | | 6.5-4-3541X | 6.5-4-2171 | 98-452-2 | | | 313254-3X |
| -40 | Kenworth | | 6.3-4-871X | 6.3-4-61 | 98-452-2 | | | 313254-3X |
| -41 | Kenworth | | 6.3-4-871-1X | 6.3-4-2171-1 | 98-452-2 | | | 313254-3X |
| -42 | Kenworth | | 6.5-4-3541-1X | 6.5-4-2171-1 | 98-452-2 | | | 313254-3X |
| -43 | Kenworth | | 6.5-4-3541X | 6.5-4-2171 | 98-452-2 | | | 313254-3X |
| -44 | Kenworth | | 6.3-4-871X | 6.3-4-61 | 98-452-2 | | | 313254-3X |
| -45 | Kenworth | | 6.3-4-871-1X | 6.3-4-61-1 | 98-452-2 | | | 313254-3X |
| -46 | Kenworth | | 6.5-4-3541-1X | 6.5-4-2171-1 | 98-452-2 | | | 313254-3X |
| -47 | Peterbilt | | 6.5-4-3541-1X | | | | 70-16-10-11X | |
| -48 | CMI | 70-410-2 | 8-4-1231 | 8-4-1241 | 98-452-1 | 98-453-1 | 70-16-10-11X | |
| -49 | | | | | | | | |
| -50 | Standard | | | | | | 330429 | |
| -51 | CMI | 70-410-2 | 6.5-4-3541X | 6.5-4-2171 | 98-452-1 | 98-453-1 | 70-16-10-11X | |
| -52 | CMI | 70-410-2 | 8-4-1231 | 8-4-1241 | 98-452-1 | 98-453-1 | 70-16-10-11X | |

s - Short Box

+ - Unit has electronic speedo mainshaft rear bearing cap

o - Unit has 1st speed blocked out.

Manual Shift

| Tab No. | Used by | Trunnion | Flange or Yoke | | Speedometer | | Shifter Housing Assembly | Top Mounted PTO |
|----------------------------------|------------------|----------|----------------|--------------|-------------|-------------|--------------------------|-----------------|
| | | | Front | Rear | Drive Gear | Driven Gear | | |
| 301476 - Model AMO1000-4C | | | | | | | | |
| -1 | Freightliner | | | | | | 70-16-14-2X | 313127X |
| -2 | Western Star | | | | 98-452-1 | 98-453-1 | 70-16-14-2X | 313127X |
| +3 | Peterbilt | | 6-4-7071-1X | | | | 70-16-14-2X | 313127X |
| +4 | Freightliner | | | | 98-452-2 | | 70-16-14-2X | 313127X |
| +5 | DSD | 70-410-2 | 6.5-4-3541-1 | 6.5-4-2171-1 | 98-452-2 | | 70-16-14-2X | |
| -6 | Spicer Australia | 70-410-2 | 6.5-4-3541X | 6.5-4-2171 | 98-452-1 | 98-453-1 | 70-16-14-2X | 313127X |
| -7 | Marmon Motor | 70-410-2 | 6-4-7071X | 6-4-4651 | 98-452-1 | 98-453-1 | 70-16-14-2X | 313127X |
| -8 | Kenworth | | 6-4-7071X | 6-4-4651 | 98-452-1 | 98-453-1 | 70-16-14-2X | 313127-3X- |
| 9 | VolvoGM | | | | 98-452-1 | 98-453-1 | 70-16-14-2X | 313127X |
| +10 | VolvoGM | | | | 98-452-2 | | 70-16-14-2X | 313127X |
| +11 | Navistar | | | | | | 70-16-14-2X | 313127X |
| +12 | Western Star | | | | 98-452-2 | | 70-16-14-2X | 313127X |
| -13 | Western Star | | | | 98-452-1 | 98-453-1 | 70-16-14-2X | 313127X |
| -14 | Pacific Truck | | 6.5-1-2501X | 6.5-1-1871 | 98-452-1 | 98-453-1 | 70-16-14-2X | 313127X |
| +15 | Ford | | 6.5-4-2171 | | 98-452-2 | | 70-16-14-2X | 313127-1X |
| +16 | Navistar | | | | | | 70-16-14-2X | 313127X |
| +17 | Kenworth | | 6-4-7071-1X | 6.5-4-2171-1 | 98-452-2 | | 70-16-14-2X | 313127-3X |
| -18 | Walker-Neer | 70-410-2 | 6-4-7071X | 6.5-4-2171 | | | 70-16-14-2X | 313127X |
| #-19 | Mack | | | | 98-452-1 | 98-453-1 | 70-16-14-2X | 313127-1X |
| -20 | Mack | | | | 98-452-1 | 98-453-1 | 70-16-14-2X | 313127-1X |
| +21 | CrawfordMS&F | 70-410-2 | 6-4-7071X | 6-4-4651 | 98-452-2 | | 70-16-14-2X | 313127X |
| -22 | Mack | 70-410-2 | | | 98-452-1 | 98-453-1 | 70-16-14-2X | 313127X |
| -23 | Timberline | 70-410-2 | 6-1-5691X | 6-4-4651 | | | 70-16-14-2X | 313127X |
| +24 | Mack | | | | 98-452-1 | 98-453-1 | 70-16-14-2X | 313127X |
| +25 | Mack | | | | 98-452-2 | | 70-16-14-2X | 313127X |
| -26 | Mack | 70-410-2 | | 6.5-1-1871 | 98-452-1 | 98-453-1 | 70-16-14-2X | 313127X |
| -27 | American Hoist | 70-410-2 | | 6.5-871-1X | 98-452-1 | 98-453-1 | 70-16-14-2X | 313127X |
| +28 | Crawford | 70-410-2 | 6.3-4-871-1X | 6.3-4-61-1 | 98-452-2 | | 70-16-14-2X | 313127X |
| +29 | Peterbilt | | 6.5-4-3541X | | | | 70-16-14-2X | 313127X |
| +30 | Kenworth | | 6.5-4-3541X | 6.5-4-2171 | 98-452-2 | | 70-16-14-2X | 313127X |
| -31 | Isuzu-Dan-Japan | 70-410-2 | 6.5-1-2501X | 6.5-1-1871 | 98-452-1 | 98-453-1 | 70-16-14-2X | 313127X |
| +32 | Peterbilt | | 6.5-4-3541-1X | | | | 70-16-14-2X | 313127X |
| #+33 | Kenworth | | 6.5-4-3541X | 3.5-4-2171 | 98-452-2 | | 70-16-14-2X | 313127X |
| +34 | AG Chem | 70-410-2 | 6-4-7071X | 6-4-4651 | 98-452-2 | | 70-16-14-2X | 313127X |
| +35 | Kenworth | | 6-4-7071X | 6-4-4651 | 98-452-2 | | 70-16-14-2X | 313127X |
| +36 | Crawford | 70-410-2 | 6-4-7071X | 6.5-4-2171 | 98-452-2 | | 70-16-14-2X | 313127X |
| +37 | Crawford | 70-410-2 | 6-4-7071-1X | 6.5-4-2171-1 | 98-452-2 | | 70-16-14-2X | 313127X |

Air-Matic Shift

| Tab No. | Used by | Trunnion | Flange or Yoke | | Speedometer | | Shifter Housing Assembly | Top Mounted PTO |
|----------------------------------|-----------------|----------|----------------|--------------|-------------|-------------|--------------------------|-----------------|
| | | | Front | Rear | Drive Gear | Driven Gear | | |
| 301476 — Model APO1000-4C | | | | | | | | |
| +38 | Linkbilt | 70-410-2 | 6.5-4-3541-1X | 6.5-4-2171-1 | | | 70-16-14-2X | |
| +39 | Kenworth | | 6.3-4-871X | 6.3-4-61 | 98-452-2 | | 70-16-14-2X | 313127X |
| ^+40 | Manitowac Crane | 70-410-2 | 170-4-1111-1X | 250-4-551-1 | 98-452-2 | | 70-16-14-2X | 313127X |
| +41 | TTC Australia | 70-410-2 | 6.5-4-3541X | 6.5-4-2171 | 98-452-2 | | 70-16-14-2X | 313127X |
| +42 | Kenworth | | 6.5-4-3541-1X | 6.5-4-2171-1 | 98-452-2 | | 70-16-14-2X | 313127X |
| +43 | Peterbilt | | 250-4-54-1X | | | | 70-16-14-2X | 313127X |
| -44 | Service | | | | | | 330429 | 313127X |
| +45 | Kenworth | | 250-4-521-1X | 250-4-551-1 | 98-452-2 | | 70-16-14-2X | 313127X |
| +46 | Peterbilt | | 6-4-7071X | | | | 70-16-14-2X | 313127X |
| -47 | | | | | | | | |
| -48 | | | | | | | | |
| -49 | | | | | | | | |
| ^50 | Standard | | | | | | 70-16-14-2X | 313127X |

- Unit has Overdrive blocked out.

A - Unit has Oil Cooler Pump Kit 313292-1X

< - Unit has Oil Cooler & Pump Kit 313231-8X

Air-Matic Shift

| Tab No. | Used by | Trunnion | Flange or Yoke | | Speedometer | | Shifter Housing Assembly | Top Mounted PTO |
|----------------------------------|------------------|----------|----------------|--------------|-------------|-------------|--------------------------|-----------------|
| | | | Front | Rear | Drive Gear | Driven Gear | | |
| 301477 - Model APO1000-4D | | | | | | | | |
| -1 | Freightliner | | | | | | 70-16-14-2X | 313127X |
| +2 | Peterbilt | | 6-4-7071-1X | | | | 70-16-14-2X | 313127X |
| +3 | Freightliner | | | | 98-452-1 | | 70-16-14-2X | 313127X |
| +4 | Service | | 6-4-7071X | | | | 70-16-14-2X | 313127X |
| -5 | Mack | | | | 98-452-1 | 98-453-1 | 70-16-14-2X | 313127-1X |
| -6 | Peterbilt | | 6-4-7071X | 6-4-4651 | 98-452-1 | 98-453-1 | 70-16-14-2X | 313127X |
| +7 | Navistar | | | | | | 70-16-14-2X | 313127X |
| -8 | Western Star | | | | 98-452-1 | 98-453-1 | 70-16-14-2X | 313127X |
| +9 | Western Star | | | | 98-452-2 | | 70-16-14-2X | 313127X |
| -10 | VolvoGM | | | | 98-452-1 | 98-453-1 | 70-16-14-2X | 313127X |
| -11 | Peterbilt | | 6-4-7071X | 6-4-4651 | 98-452-1 | 98-453-1 | 70-16-14-2X | 313127X |
| +12 | VolvoGM | | | | 98-452-2 | | 70-16-14-2X | 313127X |
| <-13 | Spicer U.K. | | 6.5-1-2501X | 6.5-1-1871 | 98-452-1 | 98-453-1 | 70-16-14-2X | 313127X |
| -14 | Spicer Australia | 70-410-2 | 6.5-4-3541X | 6.5-4-2171-1 | 98-452-1 | 98-453-1 | 70-16-14-2X | 313127X |
| +15 | Kenworth | | 6-4-7071-1X | 6-4-4651-1 | 98-452-2 | | 70-16-14-2X | 313127-3X |
| -16 | Spicer U.K. | | 6.5-1-2501X | | 98-452-1 | 98-453-1 | 70-16-14-2X | 313127X |
| +17 | Kenworth | | 6-4-7071X | 6-4-4651 | 98-452-2 | | 70-16-14-2X | 313127-3X |
| +18 | Linkbilt | 70-410-2 | 6.5-4-3541-1X | 6.5-4-2171-1 | 98-452-2 | | 70-16-14-2X | |
| +19 | Peterbilt | | 6.5-4-3541-1X | | | | 70-16-14-2X | 313127X |
| +20 | Peterbilt | | 6.5-4-3541X | | | | 70-16-14-2X | 313127X |
| +21 | Peterbilt | | 250-4-521-1X | | | | 70-16-14-2X | 313127X |
| ^22 | Linkbilt | 70-410-2 | 6.5-4-3541-1X | 6.5-4-2171-1 | | | 70-16-14-2X | |
| <-23 | Case IH Tyler | 70-410-2 | 6-4-7071X | | 6-4-4651 | 98-452-2 | 70-16-14-2X | 313127X |

- Unit has Overdrive blocked out.

A - Unit has Oil Cooler Pump Kit 313292-1X

< - Unit has Oil Cooler & Pump Kit 313231-8X

| Tab No. | Used by | Trunnion | Flange or Yoke | | Speedometer | | Shifter Housing Assembly | Top Mounted PTO |
|----------------------------------|-------------------|----------|----------------|--------------|-------------|-------------|--------------------------|-----------------|
| | | | Front | Rear | Drive Gear | Driven Gear | | |
| 301765 - Model AMO1750-4C | | | | | | | | |
| -1 | Service | | | | | | 70-16-10-11X | |
| -2 | Freightliner | | | | | | | |
| +3 | Navistar | | | | | | | 313254-2X |
| -4 | Mack | | | | 98-452-1 | 98-453-1 | | 313254-4X |
| -5 | Mack | | | | 98-452-1 | 98-453-1 | | 313254-2X |
| +6 | Kenworth | | 6-4-7071X | 6-4-4651 | 98-452-2 | | | 313254-3X |
| +7 | Peterbilt | | 6-4-7071-1X | | | | | 313254-6X |
| +8 | Freightliner | | | | 98-452-2 | | | 313254-2X |
| +9 | Western Star | | | | 98-452-2 | | 70-16-10-11X | |
| +10 | Peterbilt | | 6-4-7071-1X | | | | | 313254-7X |
| +11 | Mack/Western Star | | | | 98-452-2 | | | 313254-2X |
| +12 | Mack | | | | | | 70-16-10-11X | |
| +13 | Mack | | | | 98-452-2 | | | 313254-4X |
| +14 | Kenworth | | 6.5-4-3541X | 6.5-4-2171 | 98-452-2 | | | 313254-3X |
| +15 | Kenworth | | 6.5-4-3541-1X | 6.5-4-2171-1 | 98-452-2 | | | 313254-1X |
| +16 | Kenworth | | 6.5-4-3541-1X | 6.5-4-2171-1 | 98-452-2 | | | 313254-1X |
| +17 | Peterbilt | | 6.5-4-3541-1X | | | | 70-16-10-11X | |
| +18 | Kenworth | | 6.5-4-3541X | 6.5-4-2171 | 98-452-2 | | 70-16-10-11X | |
| +19 | Kenworth | | 250-4-521-1X | 250-4-551-1 | 98-452-2 | | | 313254-3X |
| +20 | Peterbilt | | 6.5-4-3541X | | | | | 313254-6X |
| +21 | Peterbilt | | 6-4-7071-1X | | | | | 313254-10X |
| +22 | Peterbilt | | 6.5-4-3541-1X | | | | | 313254-6X |
| +23 | Peterbilt | | 250-4-521-1X | | | | | 313254-7X |
| +24 | Peterbilt | | 6.5-4-3541-1X | | | | | 313254-7X |
| +S-25 | Service | | | | | | | |
| +26 | Kenworth | | 250-4-521-1X | 250-4-551-1 | 98-452-2 | | | 313254-1X |
| +27 | Navistar | | | | | | | 313254-3X |
| +28 | Peterbilt | | 6-4-7071X | 6-4-4651 | 98-452-1 | 98-453-1 | 70-16-10-11X | |
| +29 | Peterbilt | | 6-4-7071-1X | | | | 70-16-10-11X | |
| +30 | Kenworth | | 6-4-7071-1X | 6-4-4651-1 | 98-452-2 | | | 313254-3X |
| +31 | Kenworth | | 6-4-7071-1X | 6-4-4651-1 | 98-452-2 | | 70-16-10-11X | |
| +32 | Kenworth | | 6.3-4-871X | 6.3-4-61 | 98-452-2 | | | 313254-3X |
| +33 | Kenworth | | 6.3-4-871-1X | 6.3-4-61-1 | 98-452-2 | | | 313254-3X |
| +34 | Freightliner | | | | 98-452-2 | | | 313254-4X |
| +35 | Peterbilt | | 170-4-1111-1X | | | | | 313254-7X |
| +36 | Peterbilt | | 250-4-521-1X | | | | | 313254-7X |

| Tab No. | Used by | Trunnion | Flange or Yoke | | Speedometer | | Shifter Housing Assembly | Top Mounted PTO |
|--|---------------|----------|----------------|-------------|-------------|-------------|--------------------------|-----------------|
| | | | Front | Rear | Drive Gear | Driven Gear | | |
| 301765 - Model AMO1750-4C (Continued) | | | | | | | | |
| +37 | Kenworth | | 250-4-521-1X | 250-4-551-1 | 98-452-2 | | 70-16-10-11X | |
| +38 | Western Star | | | | 98-452-2 | | | 313254-3X |
| +39 | Kenworth | | 6.5-4-3541X | 6.5-4-2171 | 98-452-2 | | | 313254-1X |
| +40 | Peterbilt | | 250-4-521-1X | | | | 70-16-10-11X | |
| +41 | AG Chem | 70-410-2 | 6-4-7071X | 6-4-4651 | 98-452-1 | 98-453-1 | 70-16-10-11X | |
| +42 | International | | | | | | | 313254-3X |
| +43 | Western Star | | | | 98-452-1 | 98-453-1 | 70-16-10-11X | |
| +44 | Western Star | | | | 98-452-2 | | | 313254-7X |

s - Short Box

+ - Unit has electronic speedo mainshaft rear bearing cap

o - Unit has 1st speed blocked out.

^ - Unit has a 363292-1X oil control pump kit.

Manual Shift

| Tab No. | Used by | Trunnion | Flange or Yoke | | Speedometer | | Shifter Housing Assembly | Top Mounted PTO |
|----------------------------------|--------------|----------|----------------|------------|-------------|-------------|--------------------------|-----------------|
| | | | Front | Rear | Drive Gear | Driven Gear | | |
| 301766 — Model AMO1750-4D | | | | | | | | |
| -1 | | | | | | | | |
| -2 | Freightliner | | | | | | 70-16-10-11X | |
| -3 | CMI | 70-410-2 | 6.5-4-3541X | 6.5-4-2171 | 98-452-1 | 98-453-1 | 70-16-10-11X | |
| -4 | CMI | 70-410-2 | 8-4-1231 | 8-4-1241 | 98-452-1 | 98-453-1 | 70-16-10-11X | |
| ^S-5 Service | | | | | | | | |
| ^6 | CMI | 70-410-2 | 6.5-4-3541X | 6.5-4-2171 | 98-452-1 | 98-453-1 | 70-16-10-11X | |
| ^7 | CMI | 70-410-2 | 8-4-1231 | 8-4-1241 | 98-452-1 | 98-453-1 | 70-16-10-11X | |
| -8 | Peterbilt | | 6-4-7071-1X | | | | 70-16-10-11X | |
| -9 | Kenworth | | 6-4-7071-1X | 6-4-4651-1 | 98-452-2 | | 70-16-10-11X | |
| -10 | Kenworth | | 6.5-4-3541X | | | | 70-16-10-11X | |
| -11 | Peterbilt | | 6.5-4-3541-1X | | | | 70-16-10-11X | |
| -12 | Kenworth | | 6-4-7071X | 6-4-4651 | 98-452-2 | | 70-16-10-11X | |
| +13 | Western Star | | | | 98-452-1 | 97-423-1 | 70-16-10-11X | |
| -14 | Western Star | | | | 98-452-2 | | 70-16-10-11X | |
| -15 | MOL Group | | 6.5-1-2501X | 6.5-1-1871 | 98-452-2 | | | 313254-6X |
| -16 | | | | | | | | |
| -17 | | | | | | | | |
| -18 | | | | | | | | |
| -19 | | | | | | | | |
| -20 | | | | | | | | |
| -21 | | | | | | | | |
| -22 | | | | | | | | |
| -23 | | | | | | | | |
| -24 | | | | | | | | |
| ^S-25 Service | | | | | | | | |

s - Short Box

+ - Unit has electronic speedo mainshaft rear bearing cap

o - Unit has 1st speed blocked out.

^ - Unit has a 363292-1X oil control pump kit.

Air-Matic Shift

| Tab No. | Used by | Trunnion | Flange or Yoke | | Speedometer | | Shifter Housing Assembly | Top Mounted PTO |
|----------------------------------|-----------------|----------|----------------|--------------|-------------|-------------|--------------------------|-----------------|
| | | | Front | Rear | Drive Gear | Driven Gear | | |
| 301767 — Model APO1750-4C | | | | | | | | |
| -1 | | | | | | | | |
| -2 | Freightliner | | | | | | 70-16-10-11X | 313127X |
| +3 | Australia | | | | | | 70-16-14-2X | 313127X |
| +4 | Marmon Motors | 20-410-2 | 6-4-7071X | 6-4-4651 | 98-452-1 | 98-453-1 | 70-16-14-2X | 313127X |
| +5 | Western Star | | | | 98-452-2 | | 70-16-14-2X | 313127X |
| +6 | Mack | | | | 98-452-2 | | 70-16-14-2X | 313127X |
| +7 | Kenworth | | 6.5-4-3541X | 6.5-4-2171 | 98-452-2 | | 70-16-14-2X | 313127X |
| +8 | Peterbilt | | 6.5-4-3541-1X | | | | 70-16-14-2X | 313127X |
| +9 | Linkbilt | 70-410-2 | 6.5-4-3541-1X | 6.5-4-271-1 | | | 70-16-14-2X | |
| ^+10 | Manitowac Crane | | 170-4-1111-1X | 250-4-551-1 | 98-452-2 | | 70-16-14-2X | 313127X |
| +11 | Kenworth | | 6.5-4-3541-1X | 6.5-4-2771-1 | 98-452-2 | | 70-16-14-2X | 313127X |
| +12 | Peterbilt | | 250-4-521-1X | | | | 70-16-14-2X | 313127X |
| S-13 | Freightliner | | | | | | | 313127X |
| +14 | Kenworth | | 250-4-521-1X | 250-4-551-1 | 98-452-2 | | 70-16-14-2X | 313127X |
| +15 | Peterbilt | | 6-4-7071-1X | | | | 70-16-14-2X | 313127X |
| +16 | Peterbilt | | 6-4-7071-1X | | | | 70-16-14-2X | 313127X |
| ^+17 | Kenworth | 70-410-2 | 6.5-4-3541X | 6.5-4-2171 | 98-452-2 | | 70-16-14-2X | 313127X |
| ^+18 | Volvo | 70-410-2 | 6.5-4-3541-1X | 6.5-4-2171-1 | 98-452-2 | 98-453-1 | 70-16-14-2X | 313127X |
| +19 | Western Star | | | | 98-452-1 | 98-453-1 | 70-16-14-2X | 313127X |
| +20 | Kenworth | | 6-4-7071-1X | 6-4-4651-1X | 98-452-2 | | 70-16-14-2X | 313127X |
| -21 | | | | | | | | |
| -22 | | | | | | | | |
| -23 | | | | | | | | |
| -24 | | | | | | | | |
| ^S-25 | Service | | | | | | 70-16-14-2X | 313127X |
| +26 | Linkbilt | 70-410-2 | 6.5-4-3541-1X | 3.5-4-2171-1 | 98-452-2 | | 70-16-14-2X | |
| 301768 — Model APO1750-4D | | | | | | | | |
| -1 | | | | | | | | |
| -2 | Freightliner | | | | | | 70-16-14-2X | 313127X |
| -3 | Western Star | | | | 98-452-1 | 97-453-1 | 70-16-14-2X | 313127X |
| -4 | Western Star | | | | 98-452-2 | | 70-16-14-2X | 313127X |
| S-25 | Service | | | | | | 70-16-14-2X | 313127X |

+ - Unit has electronic speedo mainshaft rear bearing cap

- Unit has overdrive blocked out.

^ - Unit has a 313292-1X Oil Cooler Pump Kit.

< - Unit has a 313231-8X Oil Cooler Pump Kit.

SUPERSESSION LIST

MODELS:

1241 to AMO/APO1000-4 to AMO/APO1750-4

AMO/APO1000-4 & 1750-4

| 1241-C | 1241-C | 1241-C | 1241-C | AM01000-4C | AM01750-4C |
|------------|------------|------------|------------|------------|------------|
| 300977 -1 | 301145 -1 | 301145 -1 | 301393 -1 | 301474 -1 | 301765-2 |
| 300977 -3 | 301145 -2 | 301145 -2 | 301393 -2 | 301474 -38 | |
| 300977 -11 | 301145 -3 | 301145 -3 | 301393 -3 | | |
| 300977 -12 | 301145 -4 | 301145 -4 | 301393 -4 | 301474 -2 | |
| 300977 -17 | 301145 -5 | 301145 -5 | 301393 -5 | | |
| 300977 -20 | 301145 -6 | 301145 -6 | 301393 -6 | 301474 -5 | 301765-43 |
| 300977 -22 | 301145 -7 | 301145 -7 | 301393 -7 | 301474 -6 | 301765-3 |
| 300977 -32 | 301145 -8 | 301145 -8 | 301393 -8 | 301474 -7 | |
| 300977 -39 | 301145 -9 | 301145 -9 | 301393 -9 | | |
| 300977 -40 | 301145 -10 | 301145 -10 | 301393 -10 | | |
| 300977 -46 | 301145 -11 | 301145 -11 | 301393 -11 | | |
| 300977 -49 | 301145 -12 | 301145 -12 | 301393 -12 | | |
| 300977 -50 | 301145 -13 | 301145 -13 | 301393 -13 | 301474 -42 | 301765-28 |
| 300977 -55 | 301145 -14 | 301145 -14 | 301393 -14 | | |
| 300977 -59 | 301145 -15 | 301145 -15 | 301393 -15 | | |
| 300977 -60 | 301145 -16 | 301145 -16 | 301393 -16 | | |
| 300977 -62 | 301145 -17 | 301145 -17 | 301393 -17 | 301474 -8 | 301765-4 |
| 300977 -67 | 301145 -18 | 301145 -18 | 301393 -18 | 301474 -9 | 301765-7 |
| 300977 -69 | 301145 -19 | 301145 -19 | 301393 -19 | 301474 -34 | |
| 300977 -74 | 301145 -20 | 301145 -20 | 301393 -20 | | |
| 300977 -75 | 301145 -21 | 301145 -21 | 301393 -21 | | |
| 300977 -76 | 301145 -22 | 301145 -22 | 301393 -22 | 301474 -24 | |
| 300977 -77 | 301145 -23 | 301145 -23 | 301393 -23 | 301474 -48 | |
| 300977 -81 | 301145 -24 | 301145 -24 | 301393 -24 | | |
| | 301145 -25 | 301145 -25 | 301393 -25 | | |
| 300977 -37 | 301145 -26 | 301145 -26 | 301393 -26 | 301474 -10 | 301765-5 |
| 300977 -78 | 301145 -27 | 301145 -27 | 301393 -27 | | |
| 300977 -15 | 301145 -28 | 301145 -28 | 301393 -28 | | |
| 300977 -80 | 301145 -29 | 301145 -29 | 301393 -29 | | |
| 300977 -4 | 301145 -30 | 301145 -30 | 301393 -30 | 301474 -49 | |
| | 301145 -31 | 301145 -31 | 301393 -31 | 301474 -32 | |
| 300977 -7 | 301145 -32 | 301145 -32 | 301393 -32 | 301474 -3 | 301765-1 |
| 300977 -42 | 301145 -33 | 301145 -33 | 301393 -33 | 301474 -36 | |
| 300977 -43 | 301145 -33 | | | | |
| 300977 -18 | 301145 -34 | 301145 -34 | 301393 -34 | | |
| 300977 -63 | 301145 -35 | 301145 -35 | 301393 -35 | 301145 -36 | |
| | 301145 -36 | 301393 -36 | | 301474 -33 | |
| 300977 -44 | 301145 -37 | 301145 -37 | 301393 -37 | | |
| | 301145 -38 | 301145 -38 | 301393 -38 | | |
| | 301145 -39 | 301145 -39 | 301393 -39 | | |
| | 301145 -40 | 301145 -40 | 301393 -40 | | |
| | 301145 -41 | 301145 -41 | 301393 -41 | | |
| 300977 -36 | 301145 -42 | 301145 -42 | 301393 -42 | | |
| | 301145 -43 | 301145 -43 | 301393 -43 | | |
| 300977 -2 | None | 301145 -44 | 301393 -44 | | |
| 300977 -5 | None | 301145 -45 | 301393 -45 | | |
| 300977 -6 | None | 301145 -46 | 301393 -46 | | |

SUPERSESSION LIST

MODELS:

1241 to AMO/APO1000-4 to AMO/APO1750-4

AMO/APO1000-4 & 1750-4

| 1241-C | 1241-C | 1241-C | 1241-C | AM01000-4C | AM01750-4C |
|------------|--------|------------|------------|------------|------------|
| 300977 -8 | None | 301151 -47 | 301393 -47 | | |
| 300977 -9 | None | 301151 -48 | 301393 -48 | 301474 -37 | |
| 300977 -10 | None | 301151 -49 | 301393 -49 | 301474 -26 | |
| 300977 -13 | None | 301151 -50 | 301393 -50 | 301474 -27 | |
| 300977 -14 | None | 301151 -51 | 301393 -51 | | |
| 300977 -16 | None | 301151 -52 | 301393 -52 | | |
| 300977 -19 | None | 301151 -53 | 301393 -53 | 301474 -41 | |
| 300977 -21 | None | 301151 -54 | 301393 -54 | | |
| 300977 -23 | None | 301151 -55 | 301393 -55 | | |
| 300977 -24 | None | 301151 -56 | 301393 -56 | | |
| 300977 -25 | None | 301151 -57 | 301393 -57 | 301474 -57 | |
| 300977 -26 | None | 301151 -58 | 301393 -58 | 301474 -39 | |
| 300977 -27 | None | 301151 -59 | 301393 -59 | | |
| 300977 -28 | None | 301151 -60 | 301393 -60 | | |
| 300977 -29 | None | 301151 -61 | 301393 -61 | 301474 -35 | |
| 300977 -30 | None | 301151 -62 | 301393 -62 | | |
| 300977 -31 | None | 301151 -63 | 301393 -63 | | |
| 300977 -33 | None | 301151 -64 | 301393 -64 | 301474 -11 | |
| 300977 -34 | None | 301151 -65 | 301393 -65 | 301474 -29 | 301765 -34 |
| 300977 -35 | None | 301151 -66 | 301393 -66 | 301474 -12 | |
| 300977 -38 | None | 301151 -67 | 301393 -67 | | |
| 300977 -41 | None | 301151 -68 | 301393 -68 | | |
| 300977 -45 | None | 301151 -69 | 301393 -69 | | |
| 300977 -47 | None | 301151 -70 | 301393 -70 | | |
| 300977 -48 | None | 301151 -71 | 301393 -71 | 301474 -25 | |
| 300977 -51 | None | 301151 -72 | 301393 -72 | | |
| 300977 -52 | None | 301151 -73 | 301393 -73 | | |
| 300977 -53 | None | 301151 -74 | 301393 -74 | | |
| 300977 -54 | None | 301151 -75 | 301393 -75 | | |
| 300977 -56 | None | 301151 -76 | 301393 -76 | | |
| 300977 -57 | None | 301151 -77 | 301393 -77 | 301474 -13 | |
| 300977 -58 | None | 301151 -78 | 301393 -78 | | |
| 300977 -61 | None | 301151 -79 | 301393 -79 | | |
| 300977 -64 | None | 301151 -80 | 301393 -80 | | |
| 300977 -65 | None | 301151 -81 | 301393 -81 | | |
| 300977 -66 | None | 301151 -82 | 301393 -82 | | |
| 300977 -68 | None | 301151 -83 | 301393 -83 | 301474 -14 | 301765 -6 |
| 300977 -70 | None | 301151 -84 | 301393 -84 | | |
| 300977 -71 | None | 301151 -85 | 301393 -85 | | |
| 300977 -72 | None | 301151 -86 | 301393 -86 | | |
| 300977 -73 | None | 301151 -87 | 301393 -87 | 301474 -46 | |
| 300977 -79 | None | 301151 -88 | 301393 -88 | 301474 -47 | |
| | | 301151 -89 | 301393 -89 | | |
| | | 301151 -90 | 301393 -90 | | |
| | | 301151 -91 | 301393 -91 | | |
| | | 301151 -92 | 301393 -92 | | |

1241 to AMO/APO1000-4 to AMO/APO1750-4

AMO/APO1000-4 & 1750-4

| 1241-C | 1241-C | AM01000-4C | AMO1750-4C |
|---------------|---------------|-------------------|-------------------|
| 301151 -93 | 301393 -93 | | |
| 301151 -94 | 301393 -94 | | |
| 301151 -95 | 301393 -95 | 301474-15 | |
| 301151 -96 | 301393 -96 | | |
| 301151 -97 | 301393 -97 | | |
| 301151 -98 | 301393 -98 | | |
| 301151 -99 | 301393 -99 | | |
| 301151 -100 | 301393 -100 | | |
| 301151 -101 | 301393 -101 | | |
| 301151 -102 | 301393 -102 | | |
| 301151 -103 | 301393 -103 | | |
| 301151 -104 | 301393 -104 | 301474-16 | |
| 301151 -105 | 301393 -105 | 301474-43 | |
| 301151 -106 | 301393 -106 | 301474-44 | |
| 301151 -107 | 301393 -107 | | |
| 301151 -108 | 301393 -108 | | |
| 301151 -109 | 301393 -109 | | |
| 301151 -110 | 301393 -110 | | |
| 301151 -111 | 301393 -111 | | |
| 301151 -112 | 301393 -112 | | |
| 301151 -113 | 301393 -113 | 301474-17 | 301765-29 |
| 301151 -114 | 301393 -114 | 301474-18 | 301765-7 |
| 301151 -115 | 301393 -115 | | |
| | 301393 -116 | 301474-19 | |
| | 301393 -117 | | |
| | 301393 -118 | 301474-4 | |
| | 301393 -119 | 301474-20 | 301765-8 |
| | 301393 -120 | 301474-21 | 301765-31 |
| | 301393 -121 | 301474-22 | |
| | 301393 -122 | | |
| | 301393 -123 | 301474-23 | |
| | 301393 -124 | 301474-28 | 301765-9 |
| | | 301474-30 | |
| | | 301474-40 | |
| | | 301474-45 | |
| | | 301474-50 | |
| | | 301474-51 | |
| | | 301474-52 | |
| | | 301474-53 | |
| | | 301474-54 | |
| | | 301474-55 | 301765-43 |
| | | 301474-56 | |
| | | 301474-59 | 301765-10 |
| | | 301474-60 | 301765-11 |
| | | 301474-62 | 301765-12 |
| | | 301474-63 | 301765-13 |
| | | 301474-67 | 301765-27 |
| | | 301474-68 | |
| | | 301474-69 | |

1241 to AMO/APO1000-4 to AMO/APO1750-4

AMO/APO1000-4 & 1750-4

| 1241-C | 1241-C | AM01000-4C | AMO1750-4C |
|---------------|---------------|-------------------|-------------------|
| | | 301474-70 | 301765-14 |
| | | 301474-71 | 301765-32 |
| | | 301474-72 | 301765-33 |
| | | 301474-73 | 301765-15 |
| | | 301474-74 | 301765-39 |
| | | 301474-80 | 301765-17 |
| | | 301474-81 | 301765-18 |
| | | 301474-83 | 301765-41 |
| | | 301474-85 | 301765-19 |
| | | 301474-89 | 301765-20 |
| | | 301474-90 | 301765-21 |
| | | 301474-91 | 301765-37 |
| | | 301474-92 | 301765-35 |
| | | 301474-94 | 301765-36 |
| | | 301474-95 | 301765-22 |
| | | 301474-96 | 301765-23 |
| | | 301474-97 | 301765-40 |
| | | 301474-98 | 301765-24 |
| | | 301474-101 | 301765-26 |
| | | | 301765-25 |
| | | | 301765-30 |
| | | | 301765-38 |
| | | | 301765-44 |

SUPERSESSION LIST

MODELS:

1241 to AMO/APO1000-4 to AMO/APO1750-4

AMO/APO1000-4 & 1750-4

| 1241-D | 1241-D | 1241-D | 1241-D | AM01000-4D | AMO1750-4D |
|------------|------------|------------|------------|------------|------------|
| 300978 -1 | 301146 -1 | 301152 -1 | 301394 -1 | 301475 -1 | 301766-2 |
| 300978 -2 | 301146 -2 | 301152 -2 | 301394 -2 | 301475 -2 | |
| 300978 -5 | 301146 -3 | 301152 -3 | 301394 -3 | | |
| 300978 -7 | 301146 -4 | 301152 -4 | 301394 -4 | | |
| 300978 -10 | 301146 -5 | 301152 -5 | 301394 -5 | 301475 -20 | |
| 300978 -13 | 301146 -6 | 301152 -6 | 301394 -6 | 301475 -5 | |
| 300978 -23 | 301146 -7 | 301152 -7 | 301394 -7 | | |
| 300978 -24 | 301146 -8 | 301152 -8 | 301394 -8 | 301475 -29 | |
| 300978 -29 | 301146 -9 | 301152 -9 | 301394 -9 | 301475 -30 | |
| 300978 -31 | 301146 -10 | 301152 -10 | 301394 -10 | | |
| 300978 -4 | 301146 -11 | 301152 -11 | 301394 -11 | 301475 -3 | |
| 300978 -27 | 301146 -12 | 301152 -12 | 301394 -12 | 301475 -18 | |
| 300978 -19 | 301146 -13 | 301152 -13 | 301394 -13 | 301475 -19 | |
| | 301146 -14 | 301152 -14 | 301394 -14 | | |
| 300978 -17 | 301146 -15 | 301152 -15 | 301394 -15 | | |
| 300978 -8 | 301146 -16 | 301152 -16 | 301394 -16 | | |
| | 301146 -17 | 301152 -17 | 301394 -17 | | |
| 300978 -18 | 301146 -18 | 301152 -18 | 301394 -18 | | |
| | 301146 -19 | 301152 -19 | 301394 -19 | | |
| | 301146 -20 | 301152 -20 | 301394 -20 | | |
| 300978 -3 | None | 301152 -21 | 301394 -21 | | |
| 300978 -6 | None | 301152 -22 | 301394 -22 | | |
| 300978 -9 | None | 301152 -23 | 301394 -23 | | |
| 300978 -11 | None | 301152 -24 | 301394 -24 | 301475 -27 | |
| 300978 -12 | None | 301152 -25 | 301394 -25 | 301475 -23 | |
| 300978 -14 | None | 301152 -26 | 301394 -26 | | |
| 300978 -15 | None | 301152 -27 | 301394 -27 | 301475 -13 | |
| 300978 -16 | None | 301152 -28 | 301394 -28 | | |
| 300978 -20 | None | 301152 -29 | 301394 -29 | 301475 -6 | 301766-12 |
| 300978 -21 | None | 301152 -30 | 301394 -30 | | |
| 300978 -22 | None | 301152 -31 | 301394 -31 | 301475 -25 | |
| 300978 -25 | None | 301152 -32 | 301394 -32 | | |
| 300978 -26 | None | 301152 -33 | 301394 -33 | 301475 -15 | |
| 300978 -28 | None | 301152 -34 | 301394 -34 | 301475 -7 | |
| 300978 -30 | None | 301152 -35 | 301394 -35 | | |
| | | 301152 -36 | 301394 -36 | | |
| | | 301152 -37 | 301394 -37 | | |
| | | 301152 -38 | 301394 -38 | 301475 -31 | |
| | | 301152 -39 | 301394 -39 | | |
| | | 301152 -40 | 301394 -40 | | |
| | | 301152 -41 | 301394 -41 | | |
| | | 301152 -42 | 301394 -42 | | |
| | | 301152 -43 | 301394 -43 | | |
| | | 301152 -44 | 301394 -44 | 301475 -24 | |
| | | 301152 -45 | 301394 -45 | | |
| | | 301152 -46 | 301394 -46 | 301475 -26 | |
| | | 301152 -47 | 301394 -47 | | |

SUPERSESSION LIST

MODELS:

1241 to AMO/APO1000-4 to AMO/APO1750-4

AMO/APO1000-4 & 1750-4

| 1241-D | 1241-D | 1241-D | 1241-D | AMO1000-4D | AMO1750-4D |
|--------|--------|------------|------------|------------|------------|
| | | 301152 -48 | 301394 -48 | | |
| | | 301152 -49 | 301394 -49 | | |
| | | 301152 -50 | 301394 -50 | | |
| | | 301152 -51 | 301394 -51 | 301475 -8 | |
| | | 301152 -52 | 301394 -52 | | |
| | | 301152 -53 | 301394 -53 | | |
| | | 301152 -54 | 301394 -54 | | |
| | | 301152 -55 | 301394 -55 | 301475 -28 | |
| | | 301152 -56 | 301394 -56 | 301475 -17 | |
| | | | | | |
| | | 301152 -57 | 301394 -57 | 301475 -9 | 301766 -8 |
| | | | | | |
| | | 301152 -58 | 301394 -58 | 301475 -10 | |
| | | | 301394 -59 | 301475 -16 | |
| | | | 301394 -60 | | |
| | | | 301394 -61 | 301475 -4 | |
| | | | 301394 -62 | 301475 -11 | 301766 -9 |
| | | | 301394 -63 | 301475 -12 | |
| | | | 301394 -64 | 301475 -22 | |
| | | | None | 301475 -14 | |
| | | | None | 301475 -21 | |
| | | | None | 301475 -32 | |
| | | | | 301475 -33 | |
| | | | | 301475 -34 | |
| | | | | 301475 -35 | |
| | | | | 301475 -36 | |
| | | | | 301475 -37 | 301766 -3 |
| | | | | 301475 -38 | |
| | | | | 301475 -39 | 301766 -10 |
| | | | | 301475 -40 | |
| | | | | 301475 -41 | |
| | | | | 301475 -42 | |
| | | | | 301475 -44 | |
| | | | | 301475 -45 | |
| | | | | 301475 -46 | |
| | | | | 301475 -47 | 301766 -11 |
| | | | | 301475 -48 | 301766 -4 |
| | | | | 301475 -50 | 301766 -5 |
| | | | | 301475 -51 | 301766 -6 |
| | | | | 301475 -52 | 301766 -7 |
| | | | | | 301766 -25 |

SUPERSESSION LIST

MODELS:

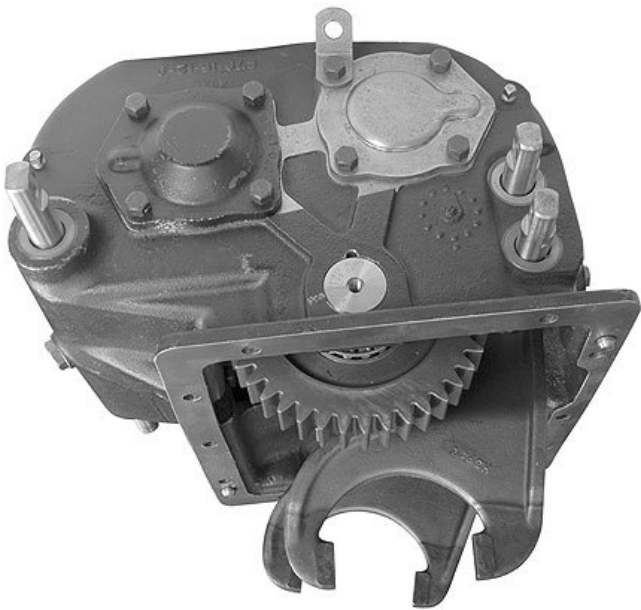
1241 to AMO/APO1000-4 to AMO/APO1750-4

AMO/APO1000-4 & 1750-4

| P1241-C | P1241-C | APO1000-4C | APO1750-4C | P1241-D | P1241-D | APO1000-4D | APO1750-4D |
|------------|------------|------------|------------|------------|------------|------------|------------|
| 301053 -1 | 301053 -1 | 301476 -1 | | 301053 -1 | 301053 -1 | 301477 -1 | 301767 -2 |
| 301053 -2 | 301053 -2 | 301476 -11 | | 301053 -2 | 301053 -2 | | |
| 301053 -3 | 301053 -3 | | | 301053 -3 | 301053 -3 | | |
| 301053 -4 | 301053 -4 | | | 301053 -4 | 301053 -4 | 301477 -7 | 301767 -4 |
| 301053 -5 | 301053 -5 | | | 301053 -5 | 301053 -5 | 301477 -11 | |
| 301053 -6 | 301053 -6 | | | 301053 -6 | 301053 -6 | | |
| 301053 -7 | 301053 -7 | | | 301053 -7 | 301053 -7 | | |
| 301053 -8 | 301053 -8 | | | 301053 -8 | 301053 -8 | | |
| 301053 -9 | 301053 -9 | 301476-14 | | 301053 -9 | 301053 -9 | | |
| 301053 -10 | 301053 -10 | | | 301053 -10 | 301053 -10 | | |
| 301053 -11 | 301053 -11 | | | 301053 -11 | 301053 -11 | | |
| 301053 -12 | 301053 -12 | | | 301053 -12 | 301053 -12 | | |
| 301053 -13 | 301053 -13 | | | 301053 -13 | 301053 -13 | 301477 -5 | |
| 301053 -14 | 301053 -14 | | | 301053 -14 | 301053 -14 | 301477 -6 | 301767 -3 |
| 301053 -15 | 301053 -15 | | | 301053 -15 | 301053 -15 | | |
| 301053 -16 | 301053 -16 | 301476 -8 | | 301053 -16 | 301053 -16 | | |
| 301053 -17 | 301053 -17 | | | 301053 -17 | 301053 -17 | 301477 -10 | |
| 301053 -18 | 301053 -18 | 301476 -7 | | 301053 -18 | 301053 -18 | 301477 -3 | |
| 301053 -19 | 301053 -19 | | | 301053 -19 | 301053 -19 | | |
| 301053 -20 | 301053 -20 | | | 301053 -20 | 301053 -20 | | |
| 301053 -21 | 301053 -21 | | | 301053 -21 | 301053 -21 | 301477 -4 | |
| 301053 -22 | 301053 -22 | | | 301053 -22 | 301053 -22 | | |
| 301053 -23 | 301053 -23 | 301476 -20 | | 301053 -23 | 301053 -23 | | |
| 301053 -24 | 301053 -24 | | | 301053 -24 | 301053 -24 | | |
| 301053 -25 | 301053 -25 | 301476 -2 | | 301053 -25 | 301053 -25 | | |
| 301053 -26 | 301395 -26 | | | 301054 -26 | 301396 -26 | | |
| 301053 -27 | 301395 -27 | | | 301054 -27 | 301396 -27 | | |
| 301053 -28 | 301395 -28 | | | 301396 -2 | 301477 -2 | | |
| 301053 -29 | 301395 -29 | 301476 -9 | | | 301396 -29 | | |
| 301053 -30 | 301395 -30 | | | | | 301477 -8 | 301768 -3 |
| 301053 -31 | 301395 -31 | 301476 -4 | | | | 301477 -9 | 301768 -4 |
| 301053 -32 | 301395 -32 | | | | | 301477 -12 | |
| 301053 -33 | 301395 -33 | 301476 -3 | 301767-16 | | | 301477 -13 | |
| 301053 -34 | 301395 -34 | | | | | 301477 -14 | |
| 301053 -35 | 301395 -35 | | | | | 301477 -15 | |
| 301053 -36 | 301395 -36 | | | | | 301477 -16 | |
| 301053 -37 | 301395 -37 | | | | | 301477 -1 | 301768 -2 |
| 301053 -38 | 301395 -38 | 301476 -19 | | | | | 301768 -25 |
| 301053 -39 | 301395 -39 | | | | | | |
| 301053 -40 | 301395 -40 | 301476 -16 | | | | | |
| 301053 -41 | 301395 -41 | 301476 -6 | | | | | |
| 301053 -42 | 301395 -42 | 301476 -15 | | | | | |
| 301053 -43 | 301395 -43 | | | | | | |
| 301053 -44 | 301395 -44 | | | | | | |
| None | None | 301476 -5 | | | | | |
| None | None | 301476 -10 | | | | | |
| None | None | 301476 -12 | 301767 -5 | | | | |
| None | None | 301476 -13 | 301767 -19 | | | | |
| None | None | 301476 -17 | 301767 -20 | | | | |
| None | None | 301476 -18 | | | | | |
| None | None | 301476 -21 | | | | | |
| | | 301476 -25 | 301767 -6 | | | | |
| | | 301476 -30 | 301767 -7 | | | | |
| | | 301476 -32 | 301767 -8 | | | | |
| | | 301476 -38 | 301767 -9 | | | | |
| | | 301476 -40 | 301767 -10 | | | | |
| | | 301476 -42 | 301767 -11 | | | | |
| | | 301476 -43 | 301767 -12 | | | | |
| | | 301476 -44 | 301767 -13 | | | | |
| | | 301476 -45 | 301767 -14 | | | | |
| | | 301476 -46 | 301767 -15 | | | | |
| | | | 301767 -25 | | | | |

INTERNAL LUBE

**TOP MOUNTED
POWER TAKE-OFFS
for Auxiliary
Transmissions**



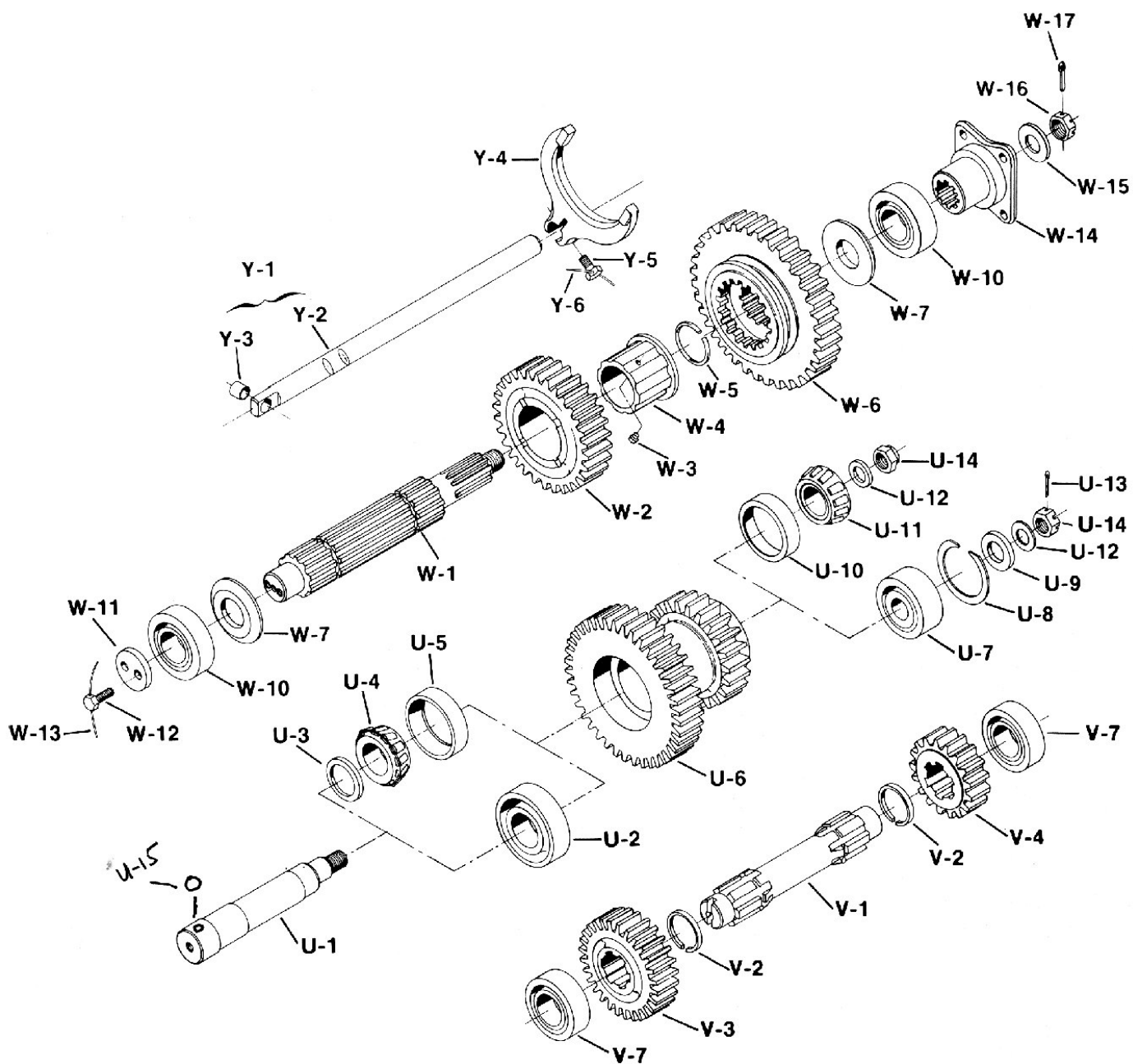
Parts Catalog

TOP MOUNTED POWER TAKE-OFFS

MODELS:

Gears & Related Parts - Cylindrical Roller Style

T210-59

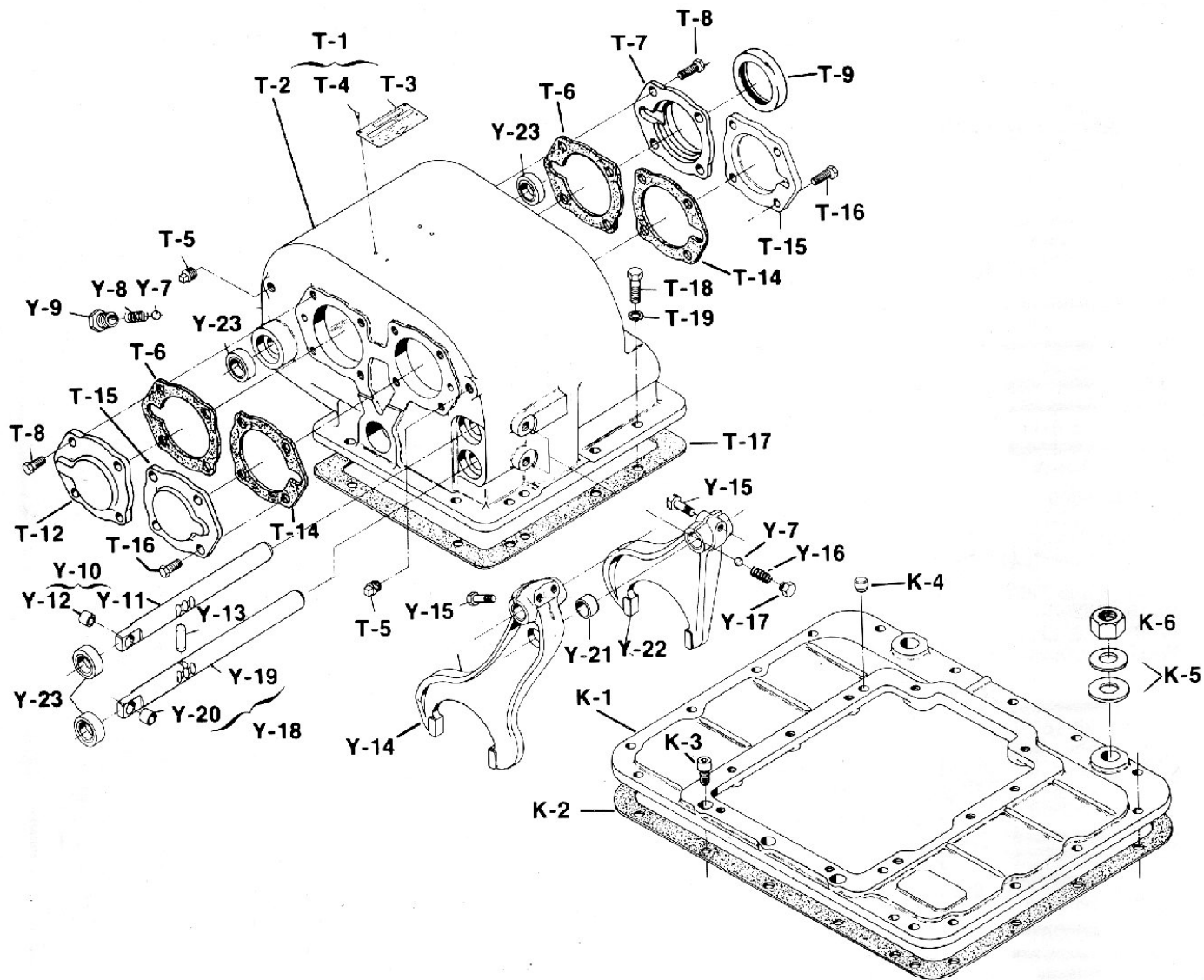


| Ref. No. | Part No. | Basic Assembly | 313254X |
|---------------------------------|------------|--|---------|
| | | Top Mounted P.T.O. Assembly | |
| | | ATO1750-4 ATO1000-4 | 1 |
| SHIFTER PARTS | | | |
| Y-1 | 98-67-4-1X | Rod & Bushing Assembly P.T.O. shift (includes Y-3) | 1 |
| Y-2 | N.S.S. | Shift Rod | 1 |
| Y-3 | 71-24-14 | Bushing-shift rod | 1 |
| Y-4 | 70-66-12 | Fork-output sliding gear shift | 1 |
| Y-5 | 595-D | Screw-shift fork | 2 |
| Y-6 | LW-3-9 | Lockwire | AR |
| OUTPUT SHAFT & GEARS | | | |
| W-1 | 70-362-10 | Output Shaft | 1 |
| W-2 | 98-8-9 | Gear-output drive (28T) | 1 |
| W-3 | 425-SP | Pin-output drive gear sleeve | 1 |
| W-4 | 98-37-5 | Sleeve-output drive gear | 1 |
| W-5 | 98-381-3 | Snap Ring | 1 |
| W-6 | 98-8-11 | Gear-output sliding (37T) | 1 |
| W-7 | 948-W | Washer-output shaft bearing | 2 |
| W-10 | 550940 | Cylindrical-output shaft bearing | 2 |
| W-11 | 517-W | Washer-bearing retainer | 1 |
| W-12 | 689-D | Screw-bearing retainer washer | 2 |
| W-13 | LW-3-9 | Lockwire | AR |
| W-14 | See Tab | Flange or Yoke | AR |
| W-15 | 139-W | Washer-29/32" I. D. | 1 |
| W-16 | 263-J | Nut-7/8"-16 hex castellated | 1 |
| W-17 | 500024-7 | Cotter Pin-1/8" x 1 1/4" | 1 |

| Ref. No. | Part No. | Basic Assembly | 313254X |
|--------------------------------------|----------|---------------------------------------|---------|
| INTERMEDIATE SHAFT & GEAR | | | |
| U-1 | 98-187-1 | Intermediate Shaft-w/self-locking nut | 1 |
| U-3 | 330816 | Washer-w/cup & cone bearing | 1 |
| U-4 | 550912 | Cone-intermediate shaft front bearing | 1 |
| U-5 | 550913 | Cup-intermediate shaft front bearing | 1 |
| U-6 | 98-30-5 | Gear-intermediate(39T - 20T) | 1 |
| U-10 | 550228 | Cup-intermediate rear bearing | 1 |
| U-11 | 550183 | Cone-intermediate rear bearing | 1 |
| U-12 | 22W | Flat Washer | 1 |
| U-14 | 545007 | Nut-3/4"-16 hex (self locking) | 1 |
| U-15 | 500566-8 | Ball Intermediate Shaft | 1 |
| REVERSE SHAFT & GEARS | | | |
| V-1 | 70-60-6 | Reverse Shaft (1 3/4"-6 spline) | 1 |
| V-2 | 70-381-5 | Snap Ring | 2 |
| V-3 | 98-196-5 | Gear-reverse drive (26T) | 1 |
| V-4 | 70-5-4 | Gear-reverse (17T) | 1 |
| V-7 | 550941 | Cylindrical-reverse shaft bearing | 2 |

N.S.S. - Not Sold Separately

N.S.-Not Shown



| Ref. No. | Part No. | Basic Assembly | 313254X |
|-------------------|-------------|--|---------|
| | | Top Mounted P.T.O. Assembly | |
| | | ATO1750-4 ATO1000-4 | 1 |
| CASE PARTS | | | |
| T-1 | 70-15-42-3X | Case Assembly | 1 |
| T-2 | N.S.S. | Case | 1 |
| T-3 | NP-96-TTC | Nameplate | 1 |
| T-4 | 252-SP | Pins nameplate | 4 |
| T-5 | 500111 | Plug-1/8" - 27 N. P. T. F. | 2 |
| T-6 | 70-223-26 | Gasket-output shaft bearing cap | 2 |
| T-7 | 98-19-4 | Cap-output shaft bearing (open end) | 1 |
| T-8 | 545002-4 | Screw-3/8"-16 x 1 1/8" hex head nylon patch | 8 |
| T-9 | 22-463-13 | Oil Seal-output shaft | 1 |
| T-12 | 98-19-3 | Cap-output shaft bearing (closed end) | 1 |
| T-14 | 70-223-23 | Gasket-reverse shaft bearing cap | 2 |
| T-15 | 70-22-16 | Cap-reverse shaft bearing | 2 |
| T-16 | 545002-1 | Screw-3/8"-16 x 7/8" hex head nylon patch | 8 |
| T-17 | 70-155-4 | Gasket - P.T.O. to Auxiliary | 1 |
| T-18 | 545028 | Screw-7/16"-14 x 1 1/4" hex head nylon patch | 8 |
| N.S. | 237-V | Stud 7/16" 14 --- 20 x 1 7/8" | 2 |
| T-19 | 330547 | Lock washer - 7/16" (external tooth) | 2 |
| N.S. | 500371-4 | Nut - 7/16" - 20 | 2 |

| Ref. No. | Part No. | Basic Assembly | 313254X |
|----------------------------|-------------|--|---------|
| SHIFTER PARTS | | | |
| Y-7 | 50-80-1 | Ball - poppet | 3 |
| Y-8 | 22-72-5 | Spring poppet | 1 |
| Y-9 | 30-59-4 | Retainer-poppet spring | 1 |
| Y-10 | 98-67-13-1X | Rod and Bushing Assembly - Use with M/S 98-362-3 | 1 |
| Y-11 | N.S.S. | Shift Rod | 1 |
| Y-12 | 71-24-14 | Bushing - shift rod | 1 |
| Y-13 | 70-12-1 | Interlock | 1 |
| Y-14 | 98-66-10 | Fork - 3rd & 4th shift | 1 |
| Y-15 | 545063 | Screw - 7/16" - 20 x 13/16" square head nylon patch | 2 |
| Y-16 | 22-72-2 | Spring poppet | 2 |
| Y-17 | 854-D | Plug - poppet spring | 2 |
| Y-18 | 98-67-2-1X | Rod & Bushing Assembly - 1st & 2nd shift (includes Y-20) | 1 |
| Y-19 | N.S.S. | Shift Rod | 1 |
| Y-20 | 71-24-4 | Bushing - shift rod | 1 |
| | 98-66-3 | Fork - 1st & 2nd shift | 1 |
| Y-23 | 61-463-4 | Oil Seal - shift rod | 4 |
| ADAPTER PLATE PARTS | | | |
| K-1 | 98-215-3 | Adapter Plate MUST be ordered separately | 1 |
| K-2 | 98-155-1 | Gasket Adapter plate to Auxiliary | 1 |
| K-3 | 500504-5 | Screw 7/16" 14 x 7/8" socket head | 2 |
| K-4 | 275-SP | Dowel Pin | 2 |
| K-5 | 16-W | Washer 7/8" I.D. case anchor spacer | 4 |
| K-6 | 500371-9 | Nut 7/8" 14 (Not included in Assembly) | 2 |

Cylindrical Roller Style

T210-59

| Tab No. | Used with Auxiliary | Location of Output Shaft | Companion Flange | |
|-------------|-----------------------|--------------------------|------------------|--------|
| | | | Part No. | Series |
| 313254 -1X | ATO1000-4 & ATO1750-4 | Rear | | |
| 313254 -2X | ATO1000-4 & ATO1750-4 | Rear | | |
| 313254 -3X | ATO1000-4 & ATO1750-4 | Front | | |
| 313254 -4X | ATO1000-4 & ATO1750-4 | Front | | |
| 313254 -5X | ATO1000-4 & ATO1750-4 | Front | | |
| 313254 -6X | ATO1000-4 & ATO1750-4 | Front | 3-1-4011 | 1410 |
| 313254 -7X | ATO1000-4 & ATO1750-4 | Rear | 3-1-4011 | 1410 |
| 313254 -8X | ATO1000-4 & ATO1750-4 | Front | | |
| 313254 -9X | ATO1000-4 & ATO1750-4 | Rear | 3-4-3291 | 1350 |
| 313254 -10X | ATO1000-4 & ATO1750-4 | Rear | 3-1-4011 | 1410 |

| Tab No. | Lockout Sleeve | | Shift Rod Assembly | | |
|-------------|----------------|------|--------------------|--------------|-------------|
| | Part No. | Gear | • 1st only | •• 1st & 2nd | P.T.O. |
| 313254 -1X | | | • 98-67-2 -1X | | 98-67-4 -1X |
| 313254 -2X | | | • 98-67-2 -1X | | 98-67-4 -1X |
| 313254 -3X | | | • 98-67-2 -1X | | 98-67-4 -1X |
| 313254 -4X | | | • 98-67-2 -1X | | 98-67-4 -1X |
| 313254 -5X | 60-203-14 | OD | • 98-67-2 -1X | | 98-67-4 -1X |
| 313254 -6X | | | • 98-67-2 -1X | | 98-67-4 -1X |
| 313254 -7X | | | • 98-67-2 -1X | | 98-67-4 -1X |
| 313254 -8X | 60-203-14 | OD | • 98-67-2 -1X | | 98-67-4 -1X |
| 313254 -9X | | | • 98-67-2 -1X | | 98-67-4 -1X |
| 313254 -10X | 60-203-14 | OD | • 98-67-2 -1X | | 98-67-4 -1X |

TOP MOUNTED POWER TAKE OFF

Superseding List

| Part No. | Model | Use |
|-----------|----------|------------|
| 313221-1X | 1241/ATO | 313254-1X |
| 313221-2X | 1241/ATO | 313254-2X |
| 313221-3X | 1241/ATO | 313254-3X |
| 313221-4X | 1241/ATO | 313254-4X |
| 313221-5X | 1241/ATO | 313254-5X |
| 313221-6X | 1241/ATO | 313254-6X |
| | 1241/ATO | 313254-7X |
| | 1241/ATO | 313254-8X |
| | 1241/ATO | 313254-9X |
| | 1241/ATO | 313254-10X |

Companion Flanges & Flange Yokes

T210-59

| Joint Series | Flange Diameter | Companion Flange Sub-Assembly | Consists of | | End of Hub to Flange Face Length | Pilot Diameter F-Female M-Male | Used with | |
|--------------|-----------------|-------------------------------|------------------|---------|----------------------------------|--------------------------------------|-------------|-------------------------|
| | | | Companion Flange | Flinger | | | Flange Yoke | Flange Yoke 1650 Series |

Output End of Shaft 1.377" Ten Spline

| | | | | | | | | |
|-----------|-------|----------|--|--|--------|----------|---------|--|
| 1350-1410 | 45/8" | 3-1-4011 | | | 27/16" | F-2 3/4" | 3-2-159 | |
| 1480 | 55/8" | 4-1-4691 | | | 25/8" | F-3 3/4" | 4-2-669 | |

End Yoke

| Joint Series | End Yoke Sub-Assembly | Consists of | | End of Hub to Center Line Length | Joint Angle |
|--------------|-----------------------|-------------|---------|----------------------------------|-------------|
| | | Yoke | Flinger | | |

Output End of Shaft 1.377" Ten Spline

| | | | | | |
|-----------|--|--|----------|----------|---------|
| 1260-1310 | | | 2-4-1731 | 37/16" | 18° |
| 1350 | | | 3-4-3291 | 3 11/16" | 22 1/2° |

Bearing Kits - Cylindrical Roller Style

| Ref. No. | Part No. | Part Name | For Assembly No. | 313232X | 313254X |
|----------|----------|-----------|------------------|---------|---------|
|----------|----------|-----------|------------------|---------|---------|

312476-22X

Bearing Kit - 1241/ATO10004-4, ATO1750-4

| | | | | | |
|------|--------|---|--|---|---|
| W-10 | 550940 | Cylindrical-output shaft | | 1 | 1 |
| U-4 | 550912 | Cone - intermediate shaft front bearing | | 2 | 2 |
| U-5 | 55Q913 | Cup - intermediate shaft front bearing | | 1 | 1 |
| U-10 | 550228 | Cup - intermediate shaft rear bearing | | 1 | 1 |
| U-11 | 550183 | Cone - intermediate shaft rear bearing | | 1 | 1 |
| V-7 | 550941 | Cylindrical - reverse shaft bearing | | 2 | 2 |

The Name Plate (NP-96) affixed to the TOP of the case is stamped with information:

SERIAL

B/M No. MODEL

In requesting more information on these furnish the B/M No. and the Serial Number. Abbreviations used in this parts list include:

N.S. - Not Shown

N.S.S. - Not Sold Separately

N.R. - Not Required



14700 Helm Court
Plymouth, MI 48170
(800) 401-9866 or (734) 456-3770
Fax: (734) 456-3739
www.ttcautomotive.com

